



THE ALFIE
2 BEDROOM ~ 1,356 SQ. FT.*

**BUNGALOW
TOWNS**



ELEVATION T

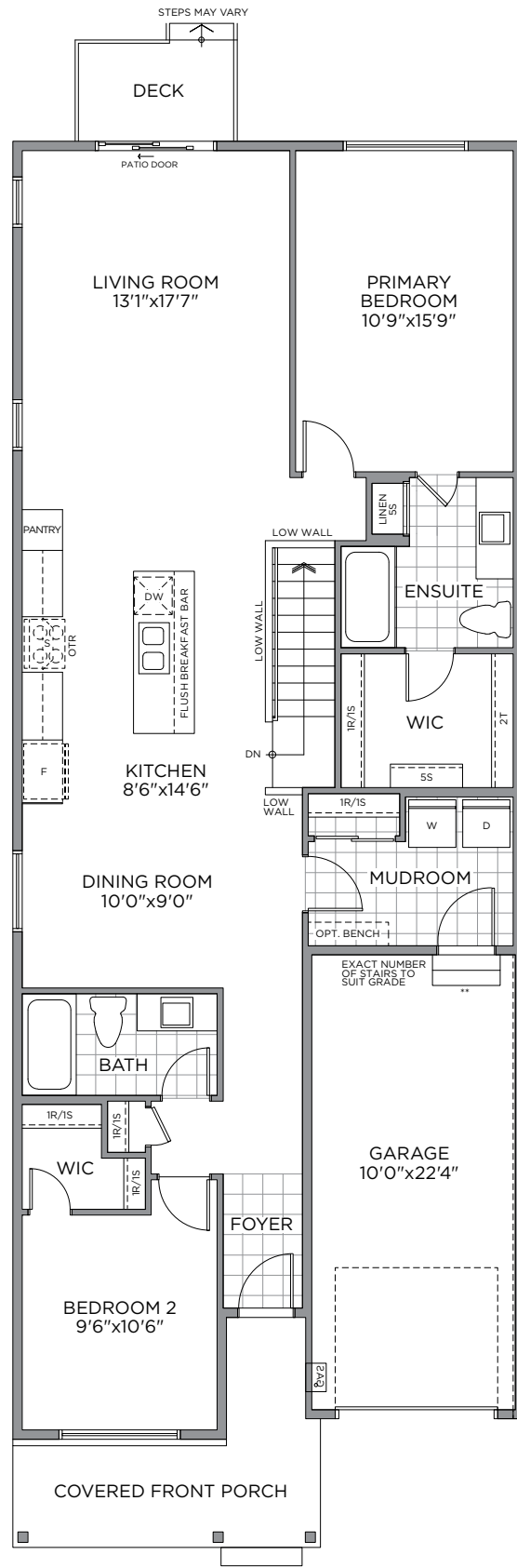
ARTIST'S CONCEPT

THE ALFIE ~ 1,356 SQ. FT.*

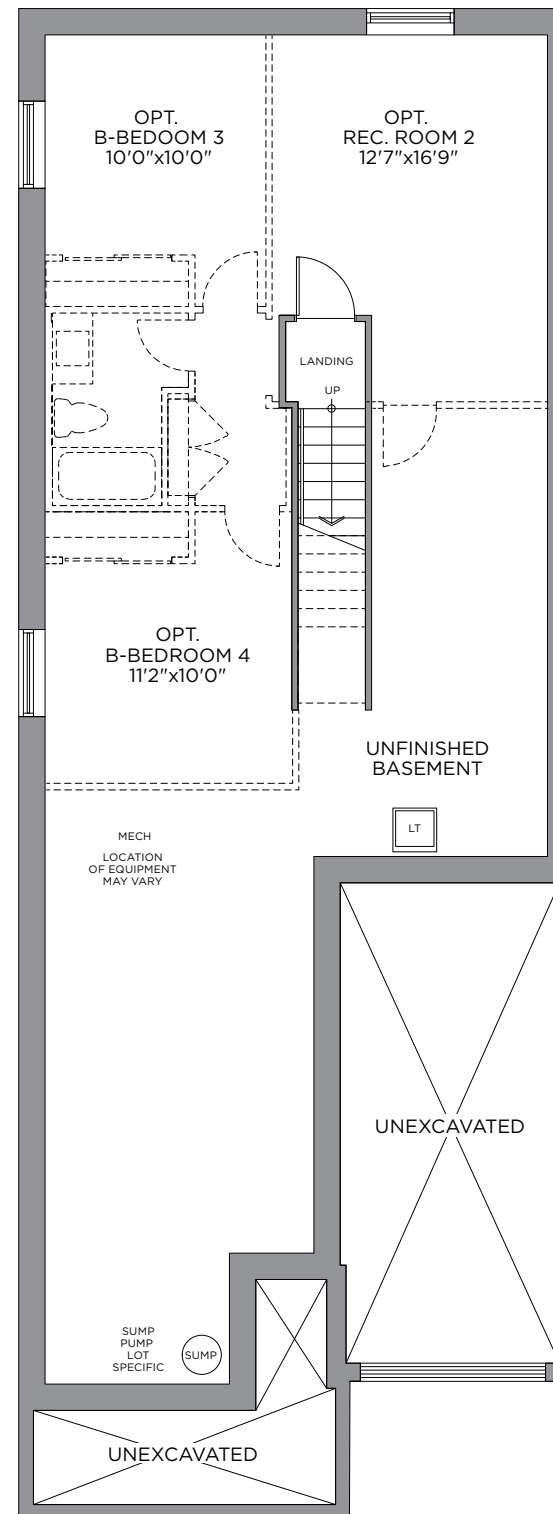
WITH OPTIONAL FINISHED BASEMENT REC. ROOM - 1,765 SQ. FT.
WITH OPTIONAL FINISHED BASEMENT - 2,023 SQ. FT.



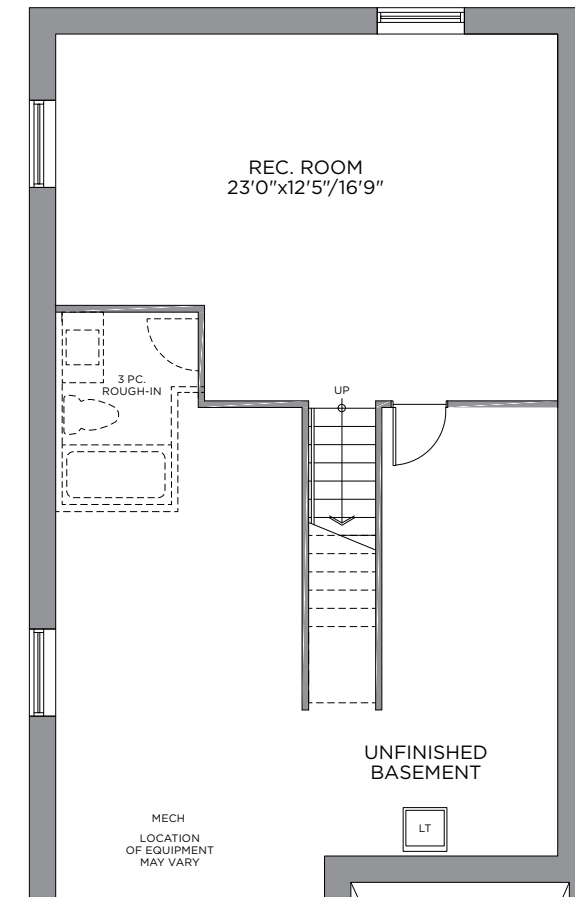
ELEVATION T



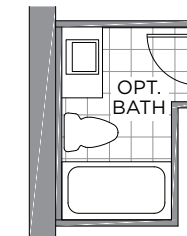
STANDARD
GROUND FLOOR



STANDARD
BASEMENT PLAN
OPT. FINISHED BASEMENT
685 SQ. FT.



OPT. FINISHED
BASEMENT REC. RM.
427 SQ. FT.



OPT. FINISHED
BASEMENT BATHROOM
+57 SQ. FT.

Front window & porch sizing/locations vary based on elevations, see agent for detailed drawings. *Total square footage includes basement landing. Prices, dimensions and specifications are subject to change without notice. All renderings are artist's concept. E. & O. E. March 2026.