

TOWNHOME

T12-29

PATERSON

1,340 SQFT

2 25

FORECOURT
COLLECTION AT GREYSTONE



E. & O. E. All renderings are artist concept. The final park plan will be designed and constructed by the City of Ottawa Parks Department and will be done through a public process.

For How You

LIVE

Welcome to the epitome of refined living by eQ Homes.

Welcome to Forecourt Collection, an exclusive enclave of Townhomes and Semi-Townhomes in the heart of Greystone Village. Each residence utilizes a modern blend of materials to establish a distinctive architectural identity. Thoughtfully crafted, open-concept interiors, enhanced by upscale appointments, ensure families enjoy a fully optimized lifestyle that balances elegant form with intuitive function. This is Forecourt Collection. City living in a refined, riverside setting.



A village at

HEART

Greystone Village is an innovative community nestled in the heart of Old Ottawa East, envisioned by Ottawa's renowned teams: Regional Group, eQ Homes, and Hobin Architecture. Perfectly situated between Ottawa's scenic Rideau River and Rideau Canal. Embrace a lifestyle filled with walking trails, biking, and waterfront activities just steps from home. Discover a vibrant community offering arts, culture, shopping, dining, and entertainment – everything you desire, all in one place.

Complementing Greystone Village's vibrant location between two of Ottawa's most picturesque waterways is its Grande Allée, the historic treelined formal gateway and central boulevard that runs through the heart of the community. Here you'll find a bustling farmers' market, speciality stores, restaurants and cafés.

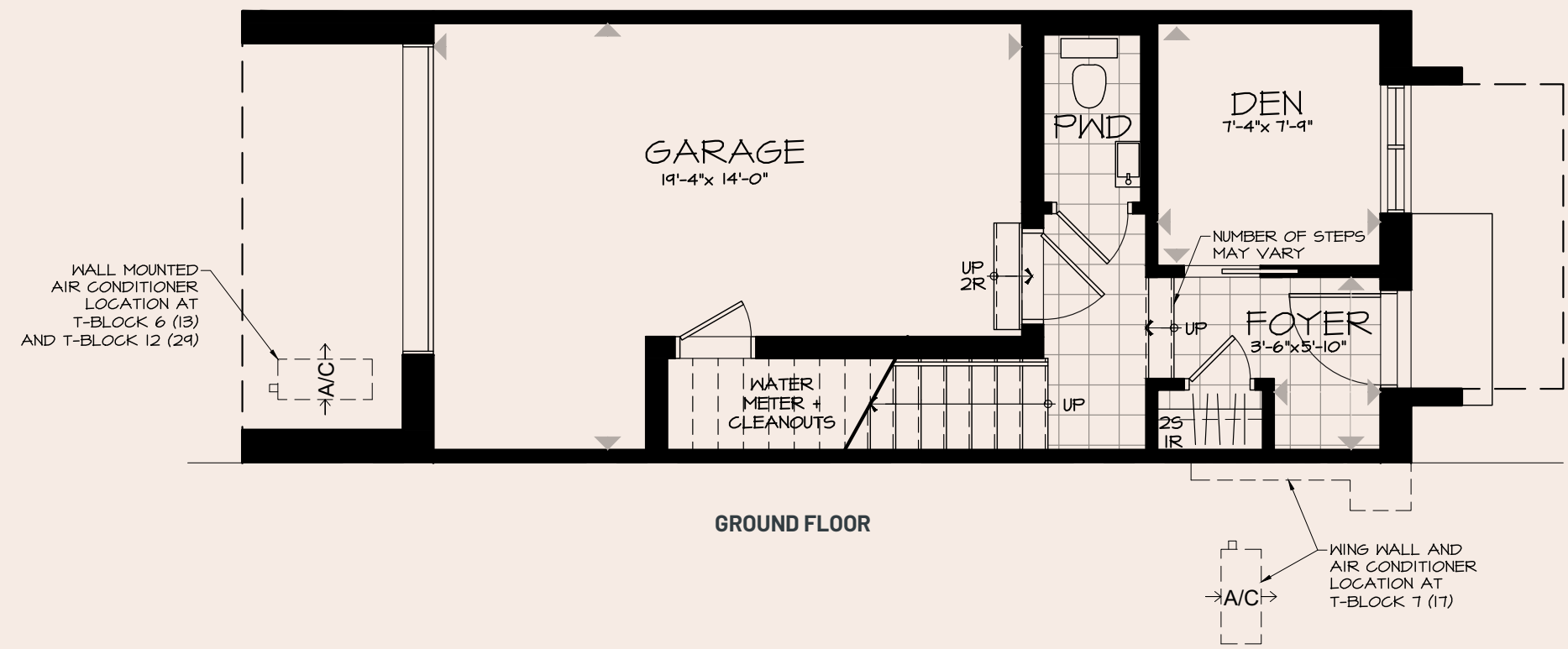
This home blends warmth and contrast with a clean, modern edge. Light oak flooring runs throughout, creating a soft, natural foundation that brightens every room and adds subtle texture underfoot. The pale wood tones reflect natural light beautifully, giving the space an airy, open feel.

eQ Design Team



PATTERSON

FORECOURT
COLLECTION AT GREYSTONE



PATTERSON

LOT T12 -29

1,340 SQ. FT.

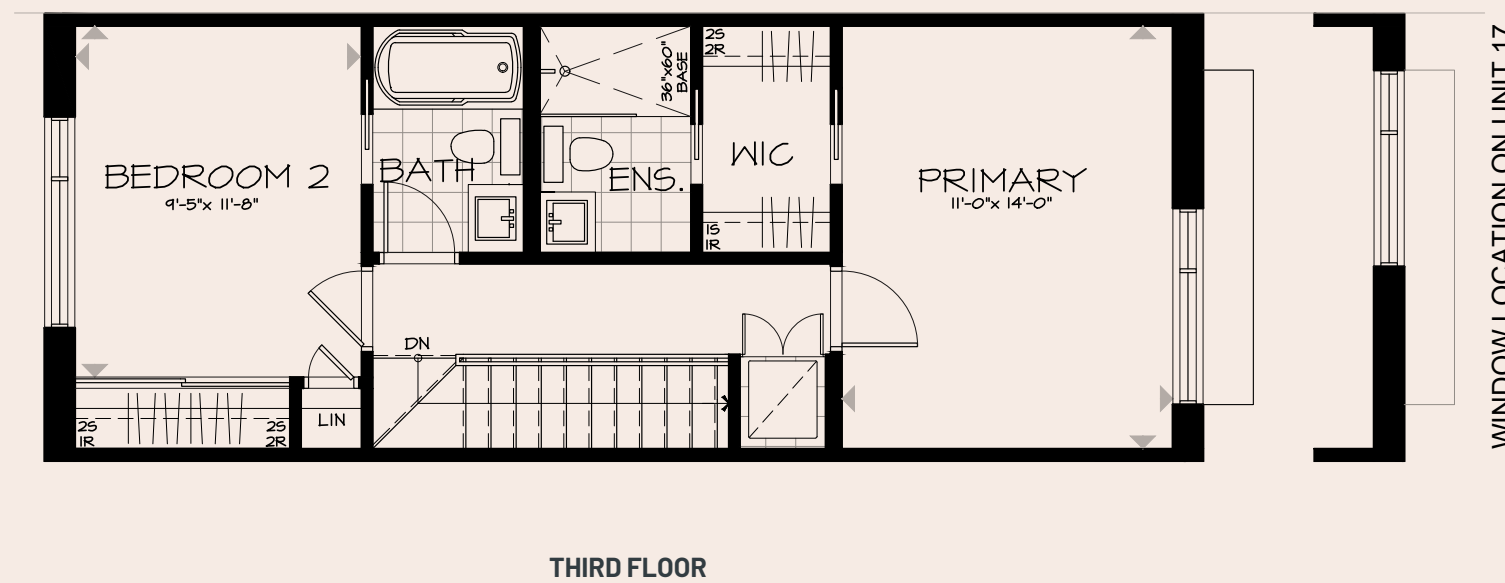
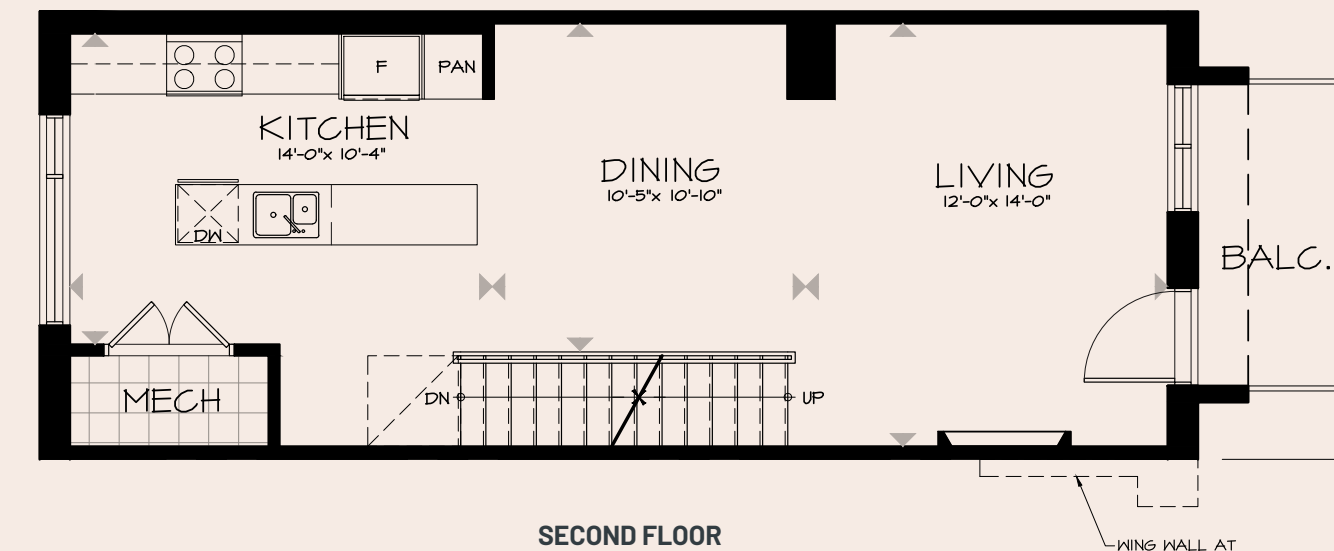
2

2.5



FORECOURT
COLLECTION AT GREYSTONE

Plans and specifications subject to change without notice. Actual usable floor space may vary from the stated floor area. Renderings are artist's concept. Bulkheads and Box Outs may be Required as Chases for Plumbing and Mechanical. See Sales Representative for more details. E. & O. E.



KITCHEN



Kitchen Sink
Double Bowl Stainless Undermount



Hood Fan
Black Chimney



Door Pull
Champagne bronze pull



Kitchen Faucet
Moen Sleek Matte Black



Upper Cabinetry
Salem Maple Saybrook



Lower Cabinetry & Island
2 Tone - Preston Thermofoil Canvas



Countertop
Aurelia Quartz



Backsplash
Aurelia Quartz

FINISHES



Kitchen renderings are for illustrative purposes only. Final kitchen design, colours, finishes, and bulkheads may vary. Appliances not included. All renderings are artist concepts. E. & O. E.

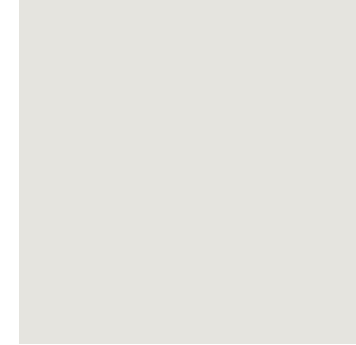
INTERIOR DETAILS



Interior Doors
Madison 1 Panel



Interior Door Hardware
Halifax Matte Black



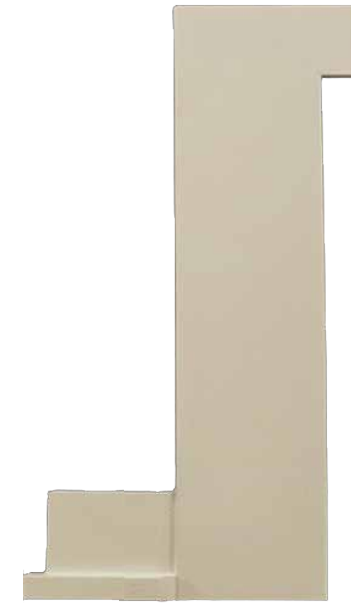
Interior Paint
Benjamin Moore OC-22 Calm



Main Entry Tile
24x24 Flodsten Cream

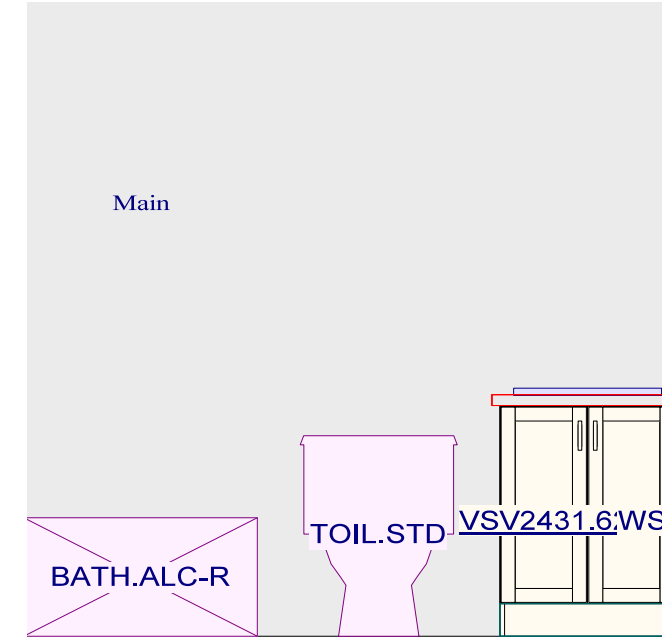


Hardwood Flooring
5" Red Oak Paisley



Trim Package
Trim Package #5

ENSUITE



Cabinetry
Yuro Walnut Sesame



Flooring
12x24 Flodsten Cream - Stacked



Door Pull
Polished Nickel Knob



Shower Wall Tile
2.5x8 La Riviera Blanc - Vertically Stacked



Vanity Sink
Proflo Rectangular Undermount



Countertop
Miami White Quartz

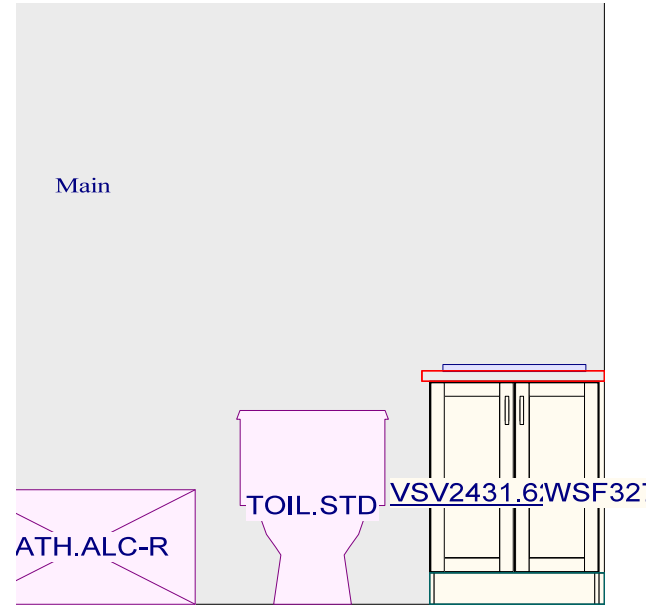


Vanity Faucet
Moen Genta Matte Black



Shower Fixture
Moen Genta Matte Black

MAIN BATH



Door Pull
Polished Nickel Knob



Vanity Sink
Proflo Rectangular Undermount



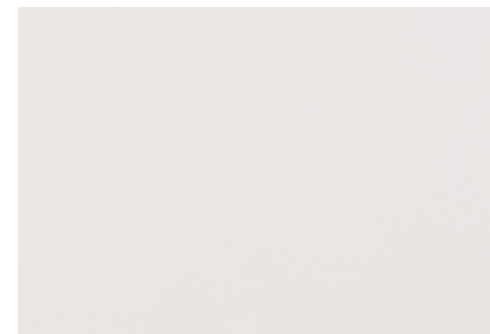
Vanity Faucet
Moen Genta Matte Black



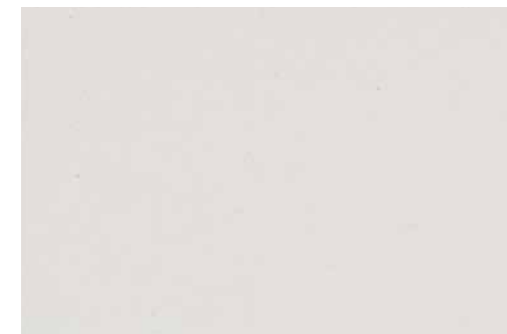
Cabinetry
Yuro Cherry Hazelnut



Flooring
12x24 Flodsten Cream - Stacked



Shower/Tub Wall Tile
4x16 Soho Canvas White Matte
- Horizontally Stacked

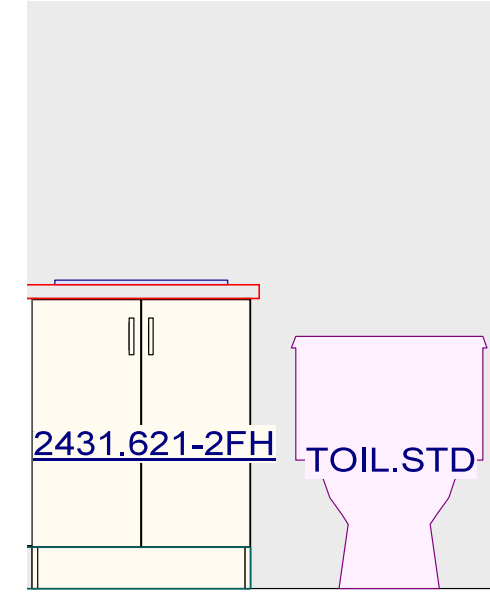


Countertop
Miami White Quartz



Tub/Shower Fixture
Moen Genta Matte Black

POWDER ROOM



Flooring
24x24 Flodsten Cream



Toilet
Proflo Jerrit Toilet



Vanity Faucet
Moen Genta Matte Black

FIREPLACE AND RAILING DETAIL

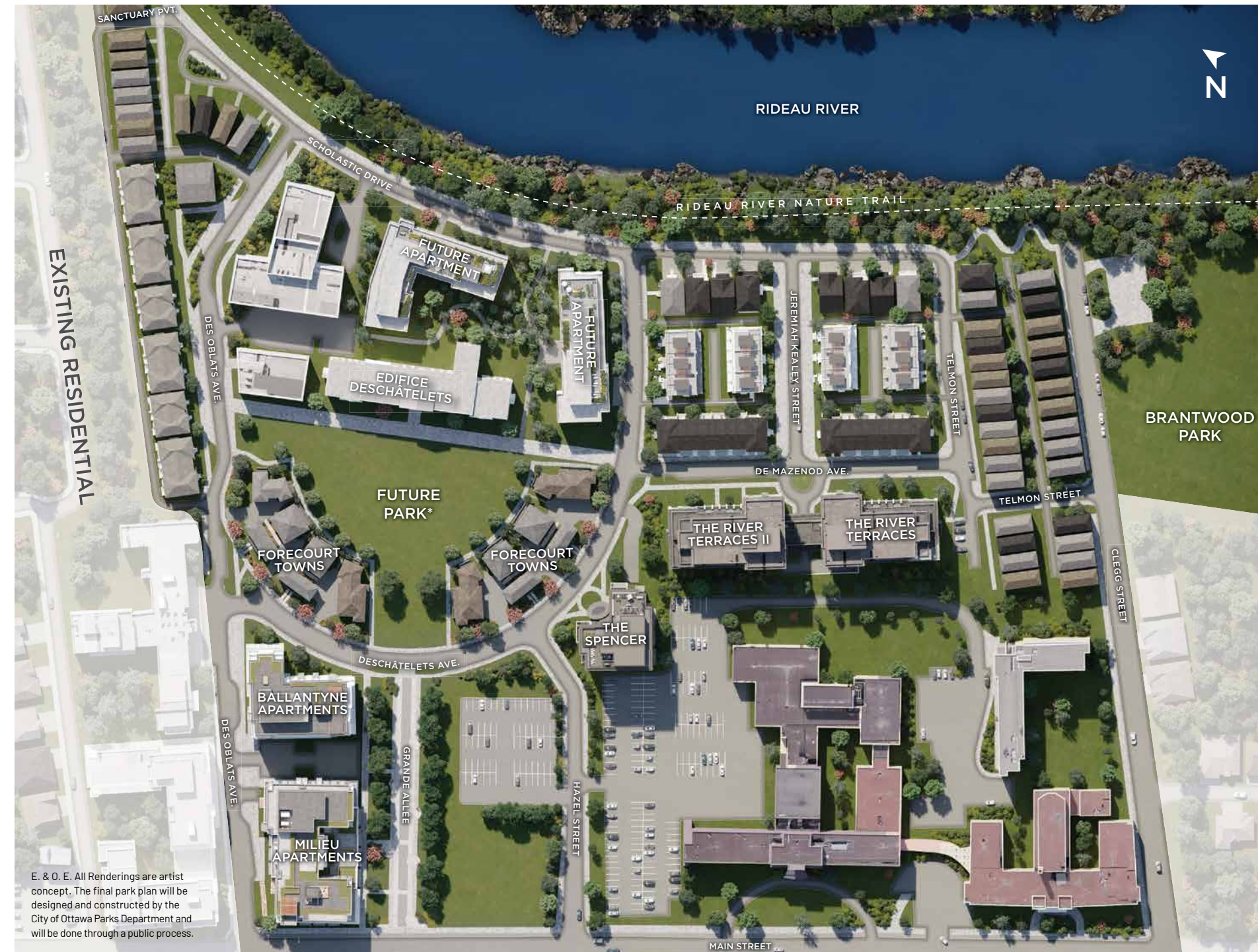


Fireplace
Napoleon Entice 36



Railing
N/A

FOR THE
BEST
COMMUNITY
DESIGN





E. & O. E. All renderings are artist concept.

Lindsay Callihoo

Sales and Leasing Consultant

EMAIL lcallihoo@eqhomes.ca

TEL 613.569.3043

ADDRESS 360 Deschâtelets Ave
Ottawa, ON K1S 5Y1

For more information, please call 613.569.3043
or contact the Leasing/Sales Office
using the 1Valet entry system.





Greystonevillage.ca/forecourt

DESIGNED BY RYAN DESIGN INTERNATIONAL