

TOWNHOME

T12-30

HOLDEN

1,710 SQFT

3 3.5

FORECOURT
COLLECTION AT GREYSTONE



For How You

LIVE

Welcome to the epitome of refined living by eQ Homes.

Welcome to Forecourt Collection, an exclusive enclave of Townhomes and Semi-Townhomes in the heart of Greystone Village. Each residence utilizes a modern blend of materials to establish a distinctive architectural identity. Thoughtfully crafted, open-concept interiors, enhanced by upscale appointments, ensure families enjoy a fully optimized lifestyle that balances elegant form with intuitive function. This is Forecourt Collection. City living in a refined, riverside setting.

E. & O. E. All renderings are artist concept. The final park plan will be designed and constructed by the City of Ottawa Parks Department and will be done through a public process.



A village at

HEART

Greystone Village is an innovative community nestled in the heart of Old Ottawa East, envisioned by Ottawa's renowned teams: Regional Group, eQ Homes, and Hobin Architecture. Perfectly situated between Ottawa's scenic Rideau River and Rideau Canal. Embrace a lifestyle filled with walking trails, biking, and waterfront activities just steps from home. Discover a vibrant community offering arts, culture, shopping, dining, and entertainment – everything you desire, all in one place.

Complementing Greystone Village's vibrant location between two of Ottawa's most picturesque waterways is its Grande Allée, the historic treelined formal gateway and central boulevard that runs through the heart of the community. Here you'll find a bustling farmers' market, speciality stores, restaurants and cafés.

Light natural wood floors set a soft, sun-washed foundation, bringing warmth and an easy, organic flow to the space. Pale cabinetry enhances the airy feel, creating a seamless, bright backdrop that feels clean yet inviting. Warm-toned quartz countertops introduce gentle depth with subtle veining, adding a touch of understated elegance. Underfoot, textured floor tiles provide visual interest and dimension, grounding the design with tactile character while maintaining the overall light and cohesive palette.

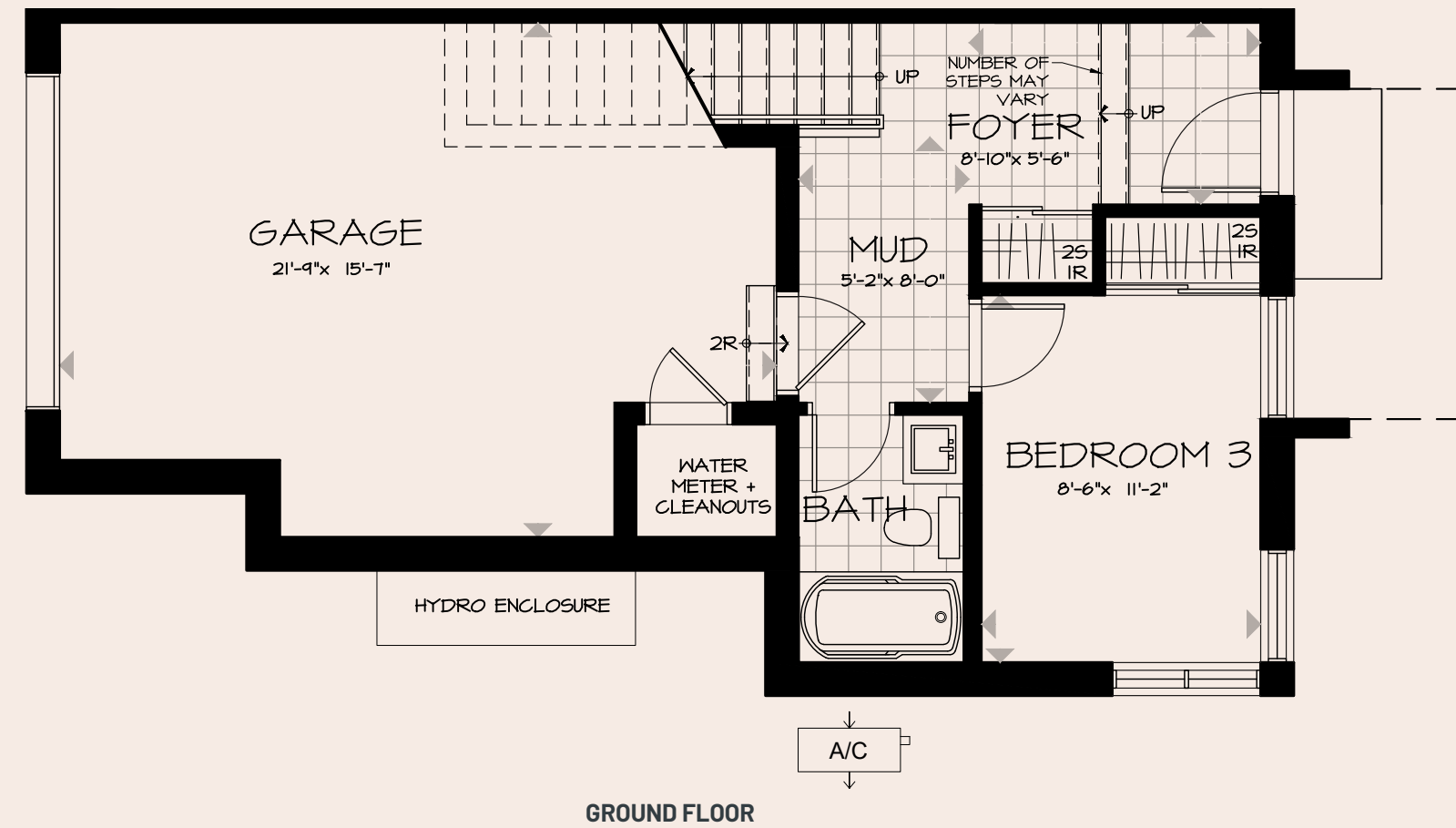
eQ Design Team



HOLDEN

FORECOURT
COLLECTION AT GREYSTONE

HOLIDAY



LOT T12 -30

1,710 SQ. FT.

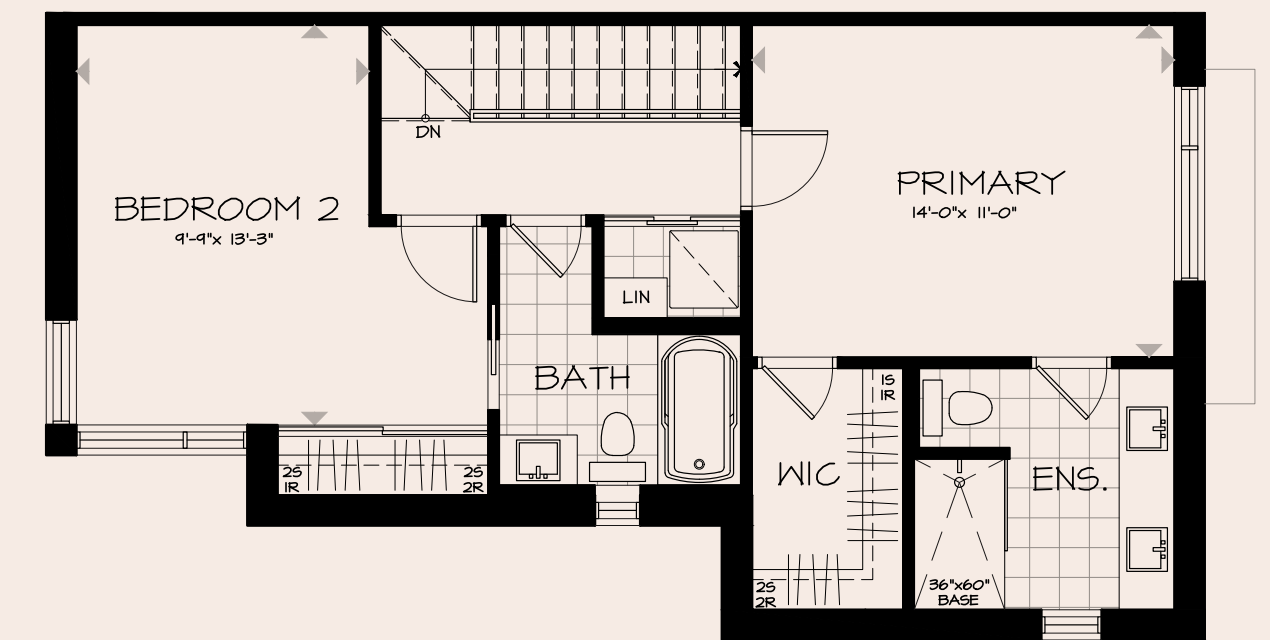
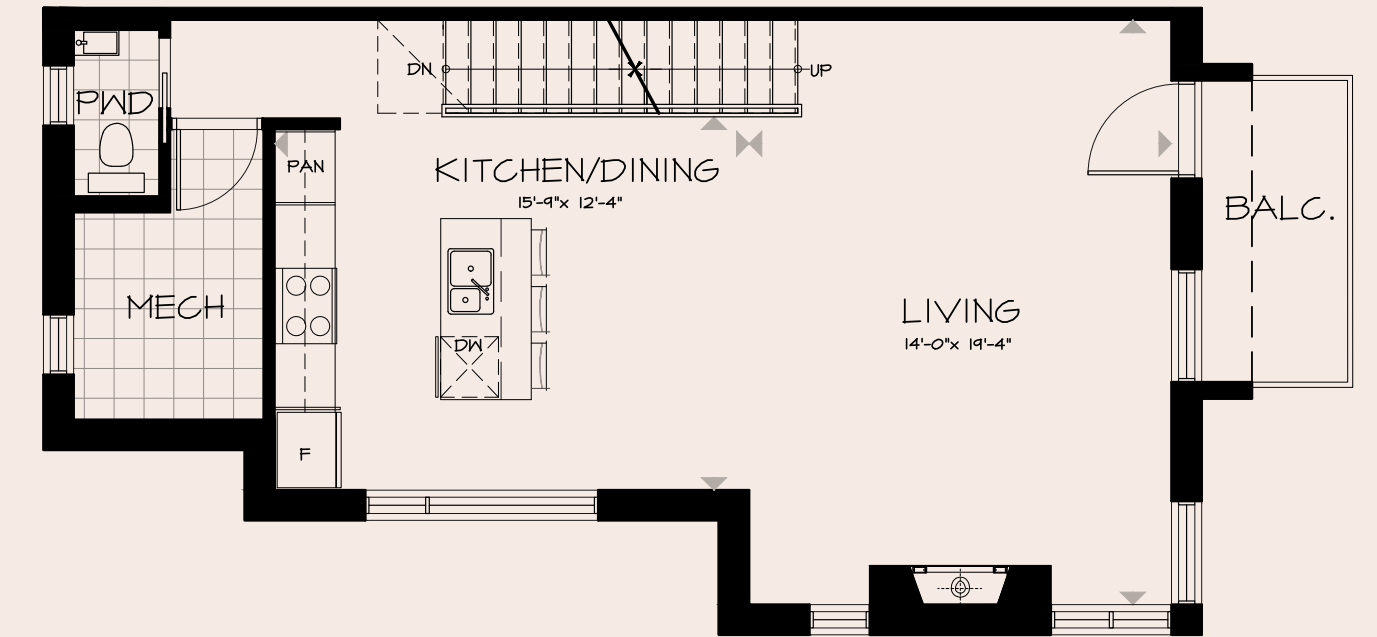
3

3.5



FORECOURT
COLLECTION AT GREYSTONE

Plans and specifications subject to change without notice. Actual usable floor space may vary from the stated floor area. Renderings are artist's concept. Bulkheads and Box Outs may be Required as Chases for Plumbing and Mechanical. See Sales Representative for more details. E. & O. E.



KITCHEN



Kitchen Sink
Double Bowl Stainless Steel Undermount



Hood Fan
Cyclone 30" Stainless Chimney



Door Pull
Polished Nickel Handles and Knobs



Kitchen Faucet
Moen Genta Stainless Steel



Upper Cabinetry
Salem MDF Nordic Lowers



Lower Cabinetry
Salem Maple Sesame Uppers



Countertop
Hanstone Cremosa Leathered Quartz



Backsplash
Hanstone Cremosa Leathered Quartz

FINISHES



Kitchen renderings are for illustrative purposes only. Final kitchen design, colours, finishes, and bulkheads may vary. Appliances not included. All renderings are artist concepts. E. & O. E.

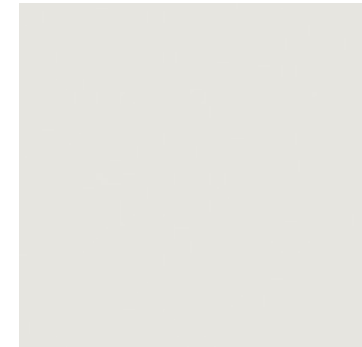
INTERIOR DETAILS



Interior Doors
Madison 1 Panel Smooth



Interior Door Hardware
Weiser Winston Satin Chrome



Interior Paint
Benjamin Moore Calm



Main Entry Tile
Ceratec 12x24 Portland Cappuccino

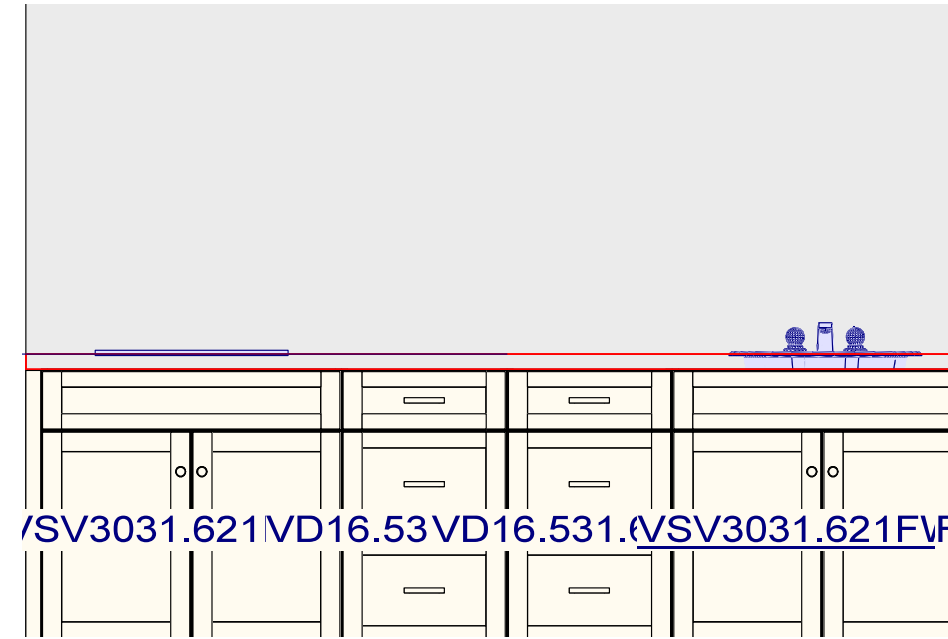


Hardwood Flooring
5" Red Oak Paisley



Trim Package
Trim Package #5

ENSUITE



Cabinetry
Salem Maple Sesame



Flooring
Euro 24x24 La Marca Nero Venato Honed



Toilet
ProFlo Jerritt



Vanity Sink
Proflo Rectangular Undermount



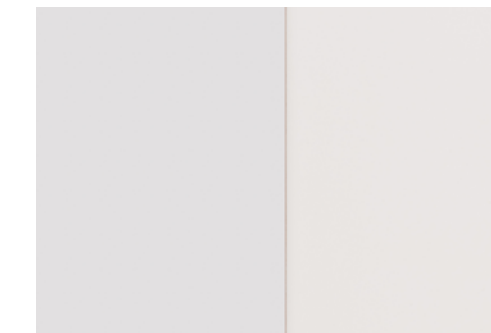
Vanity Faucet
Moen Voss Chrome



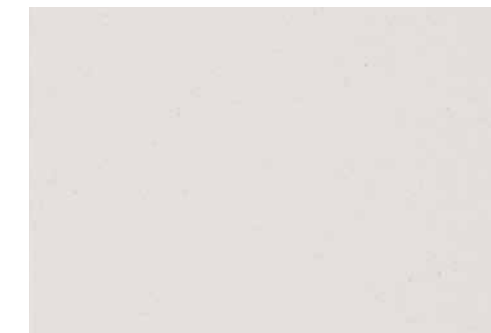
Door Pull
Polished Nickel Handles



Shower Fixture
Moen Voss Chrome

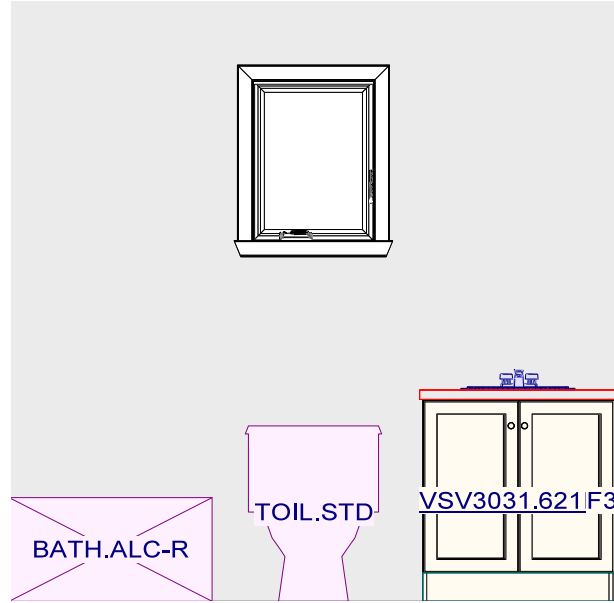


Shower Wall Tile
Euro 4x16 Pasha Soho Canvas White Matte



Countertop
Silestone Miami White

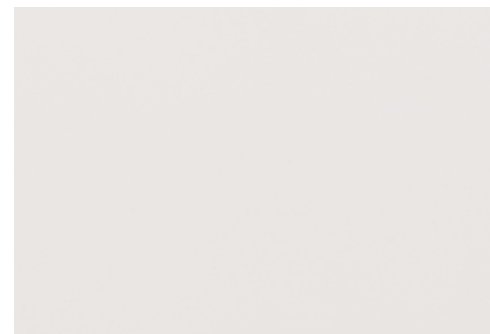
MAIN BATH



Cabinetry
Preston Satin Whitecap



Flooring
Ceratec 12x24 Portland Cappuccino



Shower/Tub Wall Tile
Euro 4x16 Pasha Soho Canvas White Matte



Countertop
Caesarstone Silver Sand



Toilet
ProFlo Jerritt Undermount



Vanity Sink
Proflo Rectangular Undermount



Door Pull
Matte Black Knob



Vanity Faucet
Moen Voss Chrome



Tub/Shower Fixture
Moen Voss Chrome

FIREPLACE AND RAILING DETAIL

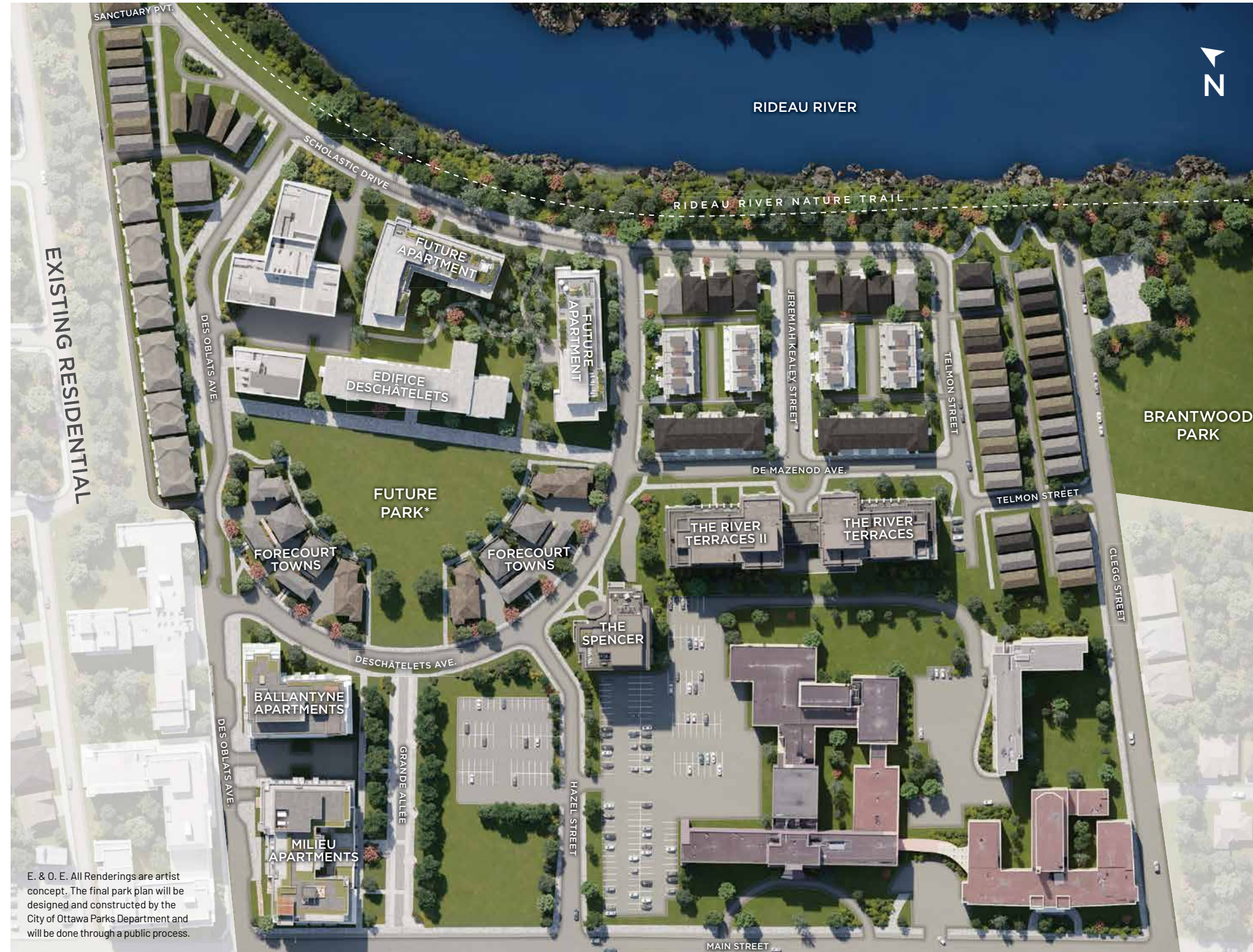


Fireplace
Savannah BL21



Railing
Railing Package #3

FOR THE
BEST
COMMUNITY
DESIGN



E. & O. E. All Renderings are artist concept. The final park plan will be designed and constructed by the City of Ottawa Parks Department and will be done through a public process.

Lindsay Callihoo

Sales and Leasing Consultant

EMAIL lcallihoo@eqhomes.ca

TEL 613.569.3043

ADDRESS 360 Deschâtelets Ave
Ottawa, ON K1S 5Y1

For more information, please call 613.569.3043
or contact the Leasing/Sales Office
using the 1Valet entry system.





Greystonevillage.ca/forecourt

DESIGNED BY RYAN DESIGN INTERNATIONAL