

TOWNHOME

T6-11

# WINDSOR

2,090 SQFT  3  3.5

**FORECOURT**  
COLLECTION AT GREYSTONE



For How You

# LIVE

**Welcome to the epitome of refined living by eQ Homes.**

Welcome to Forecourt Collection, an exclusive enclave of Townhomes and Semi-Townhomes in the heart of Greystone Village. Each residence utilizes a modern blend of materials to establish a distinctive architectural identity. Thoughtfully crafted, open-concept interiors, enhanced by upscale appointments, ensure families enjoy a fully optimized lifestyle that balances elegant form with intuitive function. This is Forecourt Collection. City living in a refined, riverside setting.

E. & O. E. All renderings are artist concept. The final park plan will be designed and constructed by the City of Ottawa Parks Department and will be done through a public process.



A village at

# HEART

Greystone Village is an innovative community nestled in the heart of Old Ottawa East, envisioned by Ottawa's renowned teams: Regional Group, eQ Homes, and Hobin Architecture. Perfectly situated between Ottawa's scenic Rideau River and Rideau Canal. Embrace a lifestyle filled with walking trails, biking, and waterfront activities just steps from home. Discover a vibrant community offering arts, culture, shopping, dining, and entertainment – everything you desire, all in one place.

Complementing Greystone Village's vibrant location between two of Ottawa's most picturesque waterways is its Grande Allée, the historic treelined formal gateway and central boulevard that runs through the heart of the community. Here you'll find a bustling farmers' market, speciality stores, restaurants and cafés.

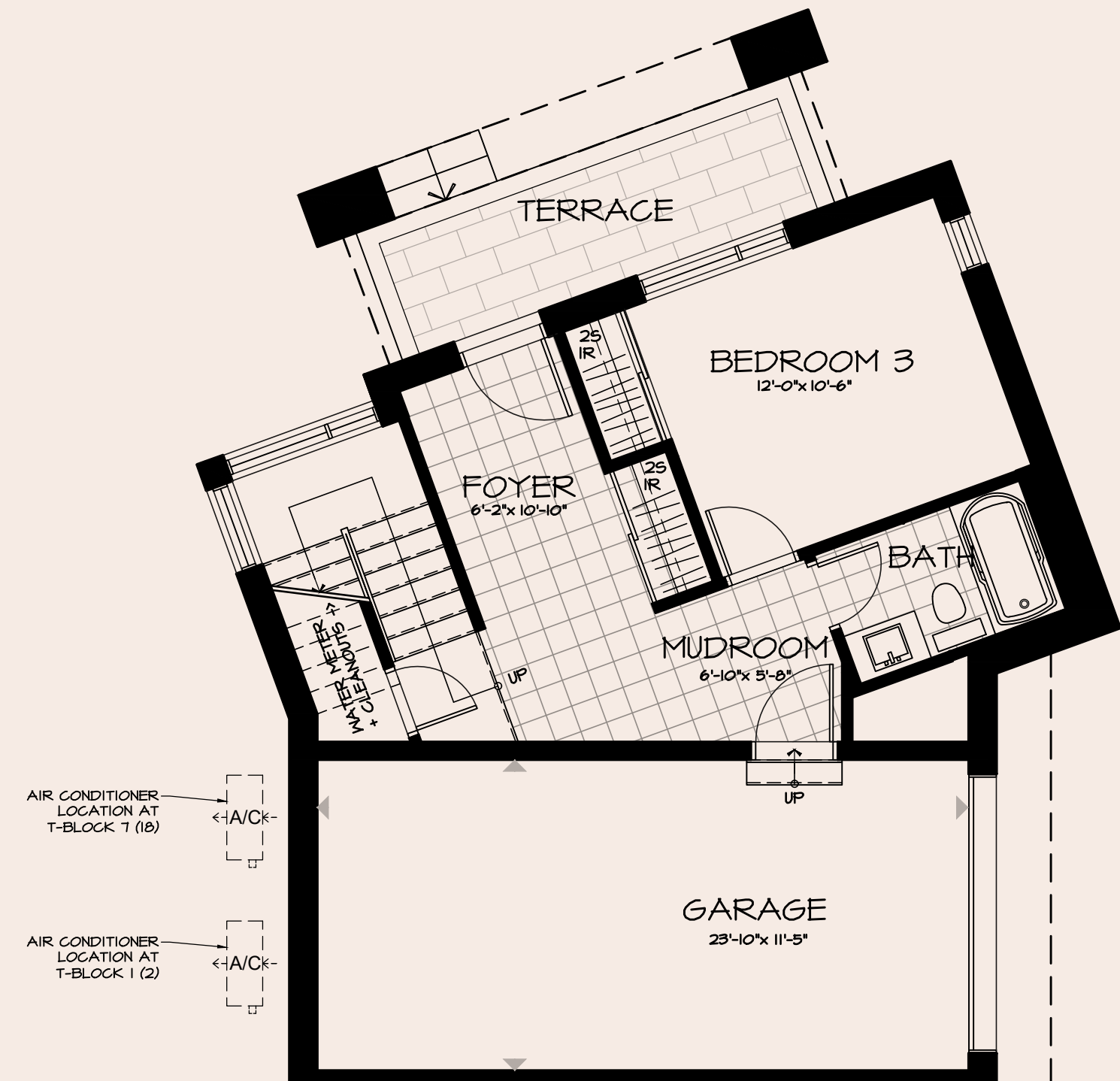
This three-storey townhouse features textured wide-plank oak floors finished in a refined grey oak tone, establishing a clean, contemporary foundation throughout the main living spaces. Bright, concrete-look tiles introduce a sleek, modern aesthetic while offering durability in high-traffic areas. Soft painted cabinetry throughout the home creates a cohesive and understated backdrop, complemented by a quartz backsplash in the kitchen that delivers a crisp, polished finish—resulting in a contemporary, easy-to-maintain workspace that feels both functional and elevated.

cQ Design Team

# WINDSOR

**FORECOURT**  
COLLECTION AT GREYSTONE





GROUND FLOOR

AIR CONDITIONER LOCATION AT T-BLOCK 7 (1B)

AIR CONDITIONER LOCATION AT T-BLOCK 1 (2)

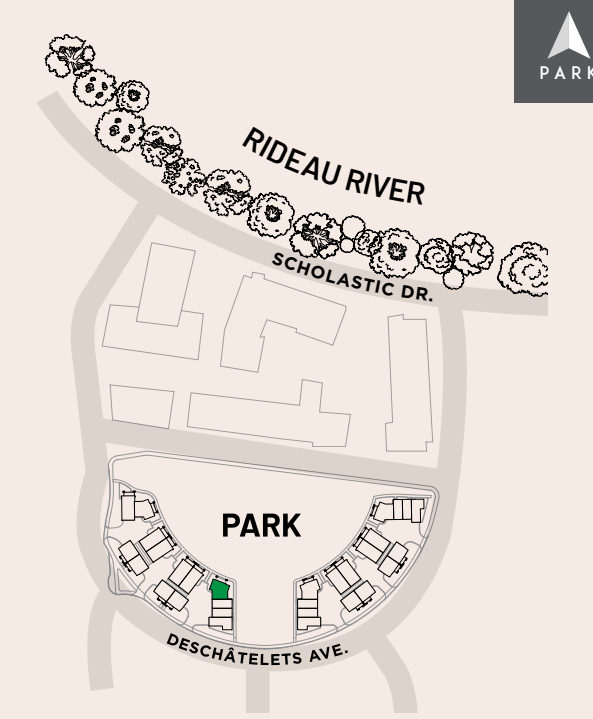
# WINDSOR

LOT T6-11

2,090 SQ. FT.

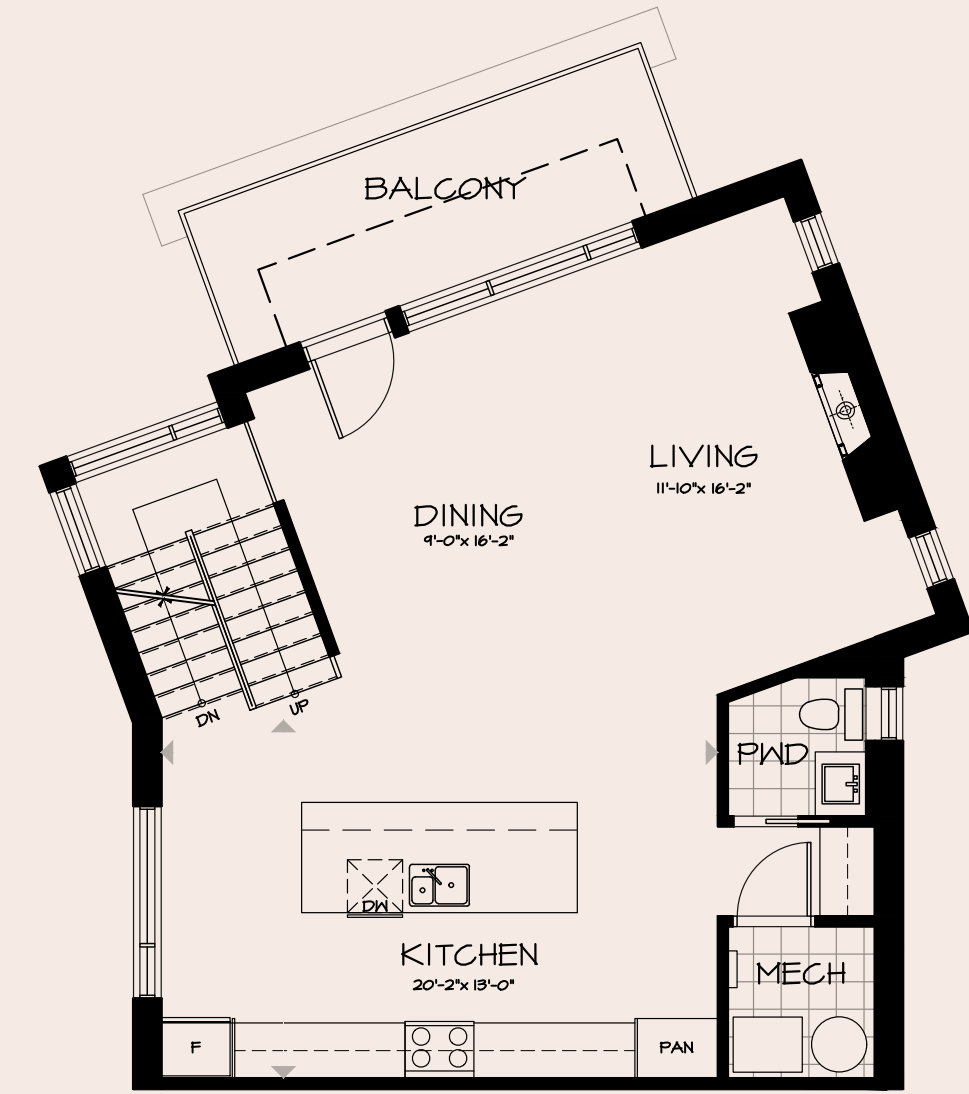
3

3.5

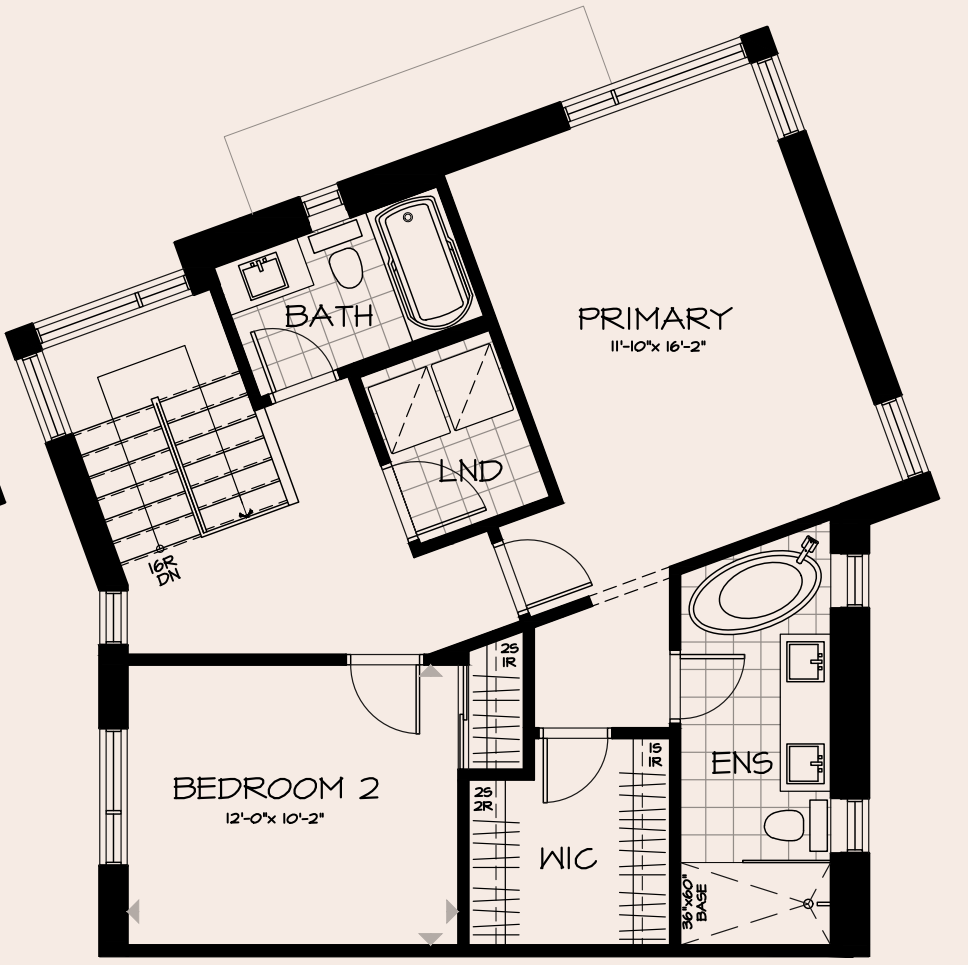


**FORECOURT**  
COLLECTION AT GREYSTONE

Plans and specifications subject to change without notice. Actual usable floor space may vary from the stated floor area. Renderings are artist's concept. Bulkheads and Box Outs may be Required as Chases for Plumbing and Mechanical. See Sales Representative for more details. E. & O. E.



SECOND FLOOR



THIRD FLOOR

# KITCHEN



**Kitchen Sink**  
Bristol Double Bowl Undermount



**Door Pull**  
Muskoka Black Pull



**Kitchen Faucet**  
Moen Align Brushed Nickel



**Hood Fan**  
Cyclone 30" Stainless Chimney



**Cabinetry**  
Salem MDF Cirrus



**Countertop**  
Hanstone Antello Quartz



**Backsplash**  
Hanstone Antello Quartz

# FINISHES



# INTERIOR DETAILS



**Main Entry Tile**  
12x24 Authentik Westside White - Stacked



**Hardwood Flooring**  
Lauzon 6" White Oak - Stonehenge



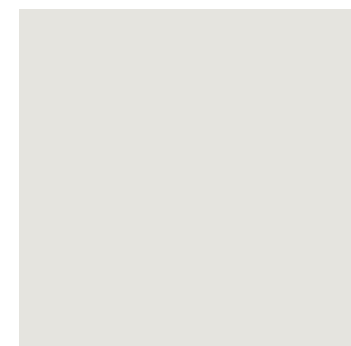
**Interior Doors**  
Madison 1 Panel Interior Doors



**Interior Door Hardware**  
Weiser Winston Satin Chrome

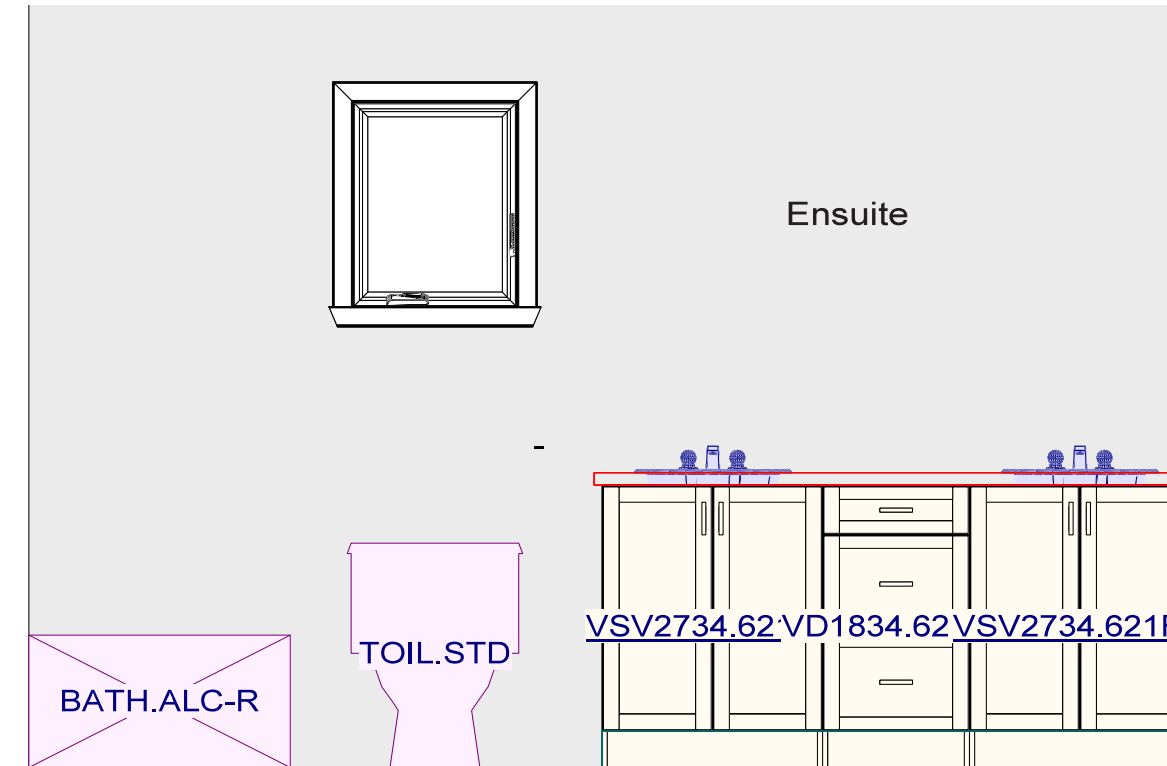


**Trim Package**  
Trim Package #5



**Interior Paint**  
Benjamin Moore OC-22 - Calm

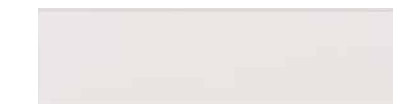
# ENSUITE



**Cabinetry**  
Salem MDF Cosmo



**Flooring**  
12x24 Authentik Westside White - Stacked



**Shower Wall Tile**  
4x16 Pasha Soho Canvas White Matte



**Countertop**  
Silestone Miami Vena Quartz



**Toilet**  
ProFlo Jerrit Toilet



**Vanity Sink**  
ProFlo Rectangular Undermount



**Vanity Faucet**  
Moen Rizon Brushed Nickel



**Shower Fixture**  
Moen Rizon Brushed Nickel

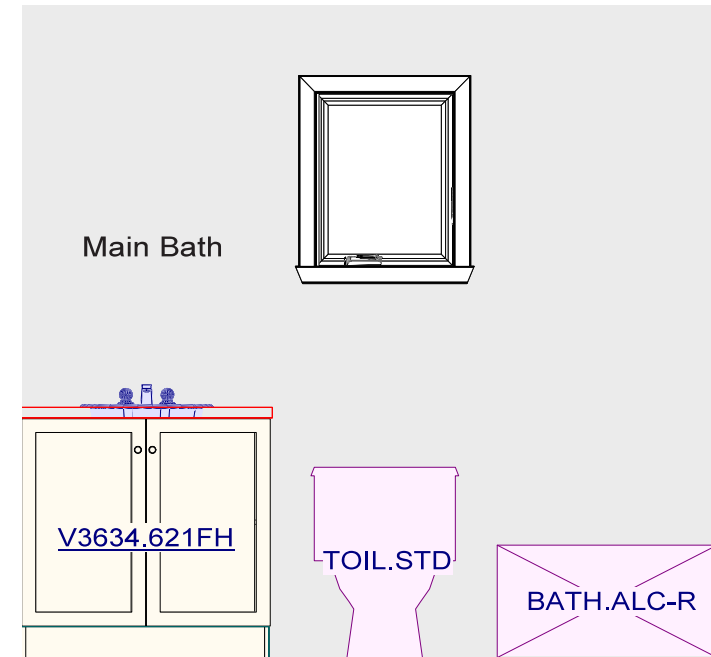


**Tub Faucet**  
Moen Rizon Brushed Nickel



**Door Pull**  
Muskoka Black Pull

# MAIN BATH



**Flooring**  
12x24 Authentik Westside White - Stacked



**Countertop**  
Hanstone Antello Quartz



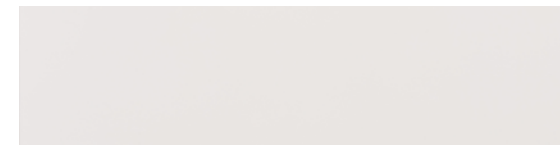
**Cabinetry**  
Salem MDF Cirrus



**Tub/shower Fixture**  
Moen Rizon Brushed Nickel



**Vanity Faucet**  
Moen Rizon Brushed Nickel



**Shower/Tub Wall Tile**  
4x16 Pasha Soho Canvas White Matte



**Door Pull**  
Muskoka Black Pull

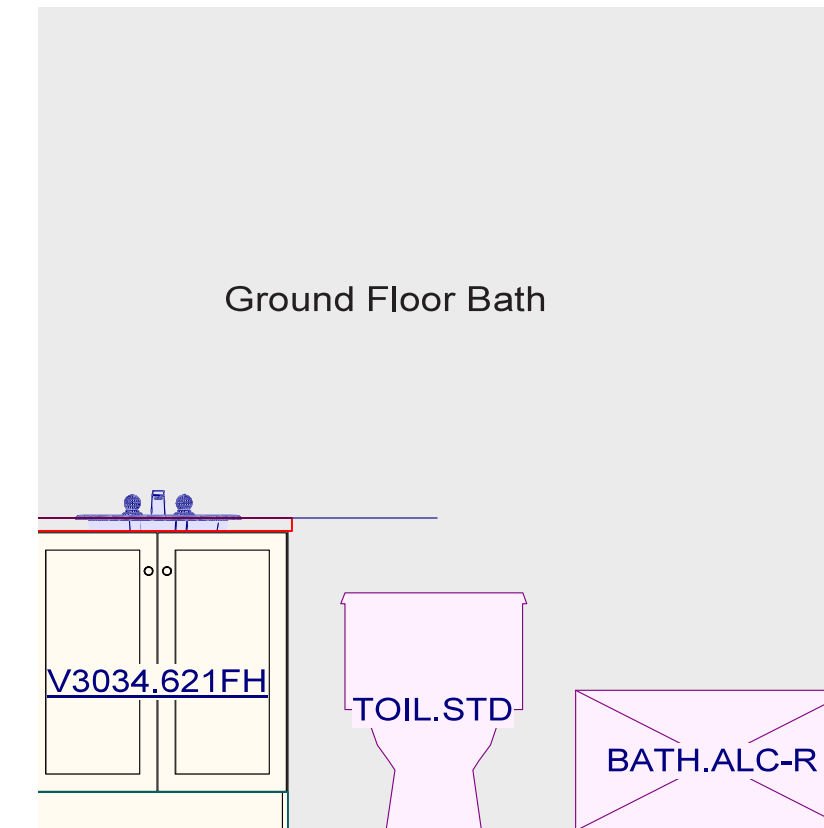


**Toilet**  
ProFlo Jerrit Toilet



**Vanity Sink**  
ProFlo Rectangular Undermount

# GROUND FLOOR BATH



**Countertop**  
Hanstone Antello Quartz



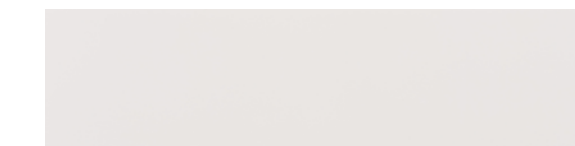
**Cabinetry**  
Salem MDF Cirrus



**Door Pull**  
Muskoka Black Pull



**Flooring**  
12x24 Authentik Westside White - Stacked



**Shower/Tub Wall Tile**  
4x16 Pasha Soho Canvas White Matte



**Vanity Faucet**  
Moen Rizon Brushed Nickel



**Vanity Sink**  
ProFlo Rectangular Undermount

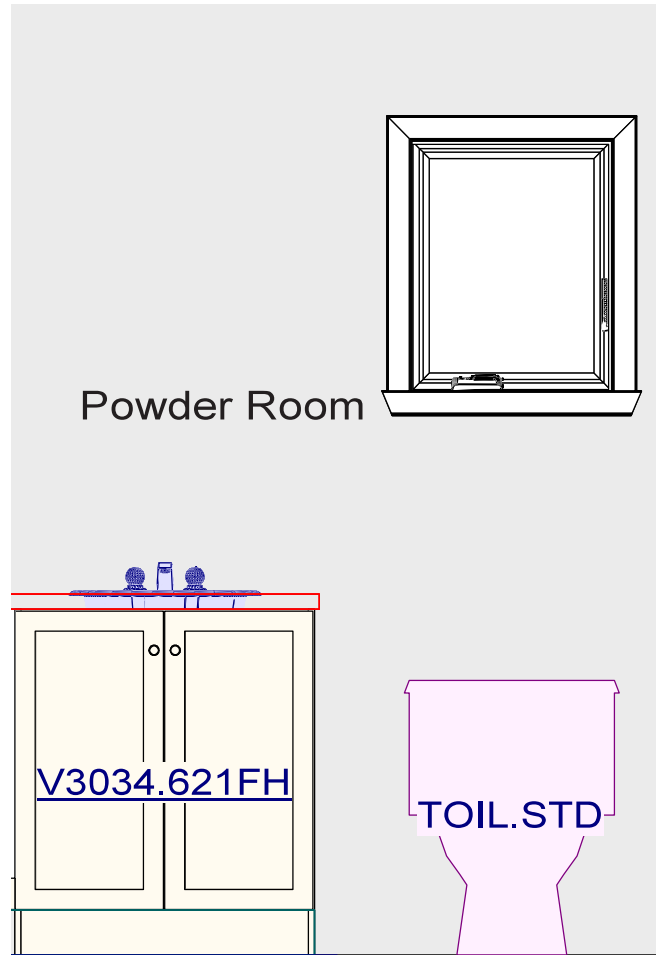


**Tub/shower Fixture**  
Moen Rizon Brushed Nickel



**Toilet**  
ProFlo Jerrit Toilet

# POWDER ROOM



**Cabinetry**  
Salem MDF Cirrus



**Flooring**  
12x24 Authentik Westside White  
- Stacked



**Vanity Faucet**  
Moen Rizon Brushed Nickel



**Door Pull**  
Muskoka Black Pull



**Toilet**  
ProFlo Jerrit Toilet



**Vanity Sink**  
ProFlo Rectangular Undermount



**Countertop**  
Hanstone Antello Quartz

# FIREPLACE AND RAILING DETAIL



**Fireplace**  
Savannah BL21 Linear Firebox



**Railing**

FOR THE  
BEST  
COMMUNITY  
DESIGN



E. & O. E. All Renderings are artist concept. The final park plan will be designed and constructed by the City of Ottawa Parks Department and will be done through a public process.

## Lindsay Callihoo

Sales and Leasing Consultant

**EMAIL**      lcallihoo@eqhomes.ca

**TEL**            613.569.3043

**ADDRESS**    360 Deschâtelets Ave  
Ottawa, ON K1S 5Y1

For more information, please call 613.569.3043  
or contact the Leasing/Sales Office  
using the 1Valet entry system.





[Greystonevillage.ca/forecourt](http://Greystonevillage.ca/forecourt)

DESIGNED BY RYAN DESIGN INTERNATIONAL