

TOWNHOME

T1-02

WINDSOR

2,090 SQFT  3  3.5

FORECOURT

COLLECTION AT GREYSTONE



For How You

LIVE

Welcome to the epitome of refined living by eQ Homes.

Welcome to Forecourt Collection, an exclusive enclave of Townhomes and Semi-Townhomes in the heart of Greystone Village. Each residence utilizes a modern blend of materials to establish a distinctive architectural identity. Thoughtfully crafted, open-concept interiors, enhanced by upscale appointments, ensure families enjoy a fully optimized lifestyle that balances elegant form with intuitive function. This is Forecourt Collection. City living in a refined, riverside setting.

E. & O. E. All renderings are artist concept. The final park plan will be designed and constructed by the City of Ottawa Parks Department and will be done through a public process.



A village at

HEART

Greystone Village is an innovative community nestled in the heart of Old Ottawa East, envisioned by Ottawa's renowned teams: Regional Group, eQ Homes, and Hobin Architecture. Perfectly situated between Ottawa's scenic Rideau River and Rideau Canal. Embrace a lifestyle filled with walking trails, biking, and waterfront activities just steps from home. Discover a vibrant community offering arts, culture, shopping, dining, and entertainment – everything you desire, all in one place.

Complementing Greystone Village's vibrant location between two of Ottawa's most picturesque waterways is its Grande Allée, the historic treelined formal gateway and central boulevard that runs through the heart of the community. Here you'll find a bustling farmers' market, speciality stores, restaurants and cafés.

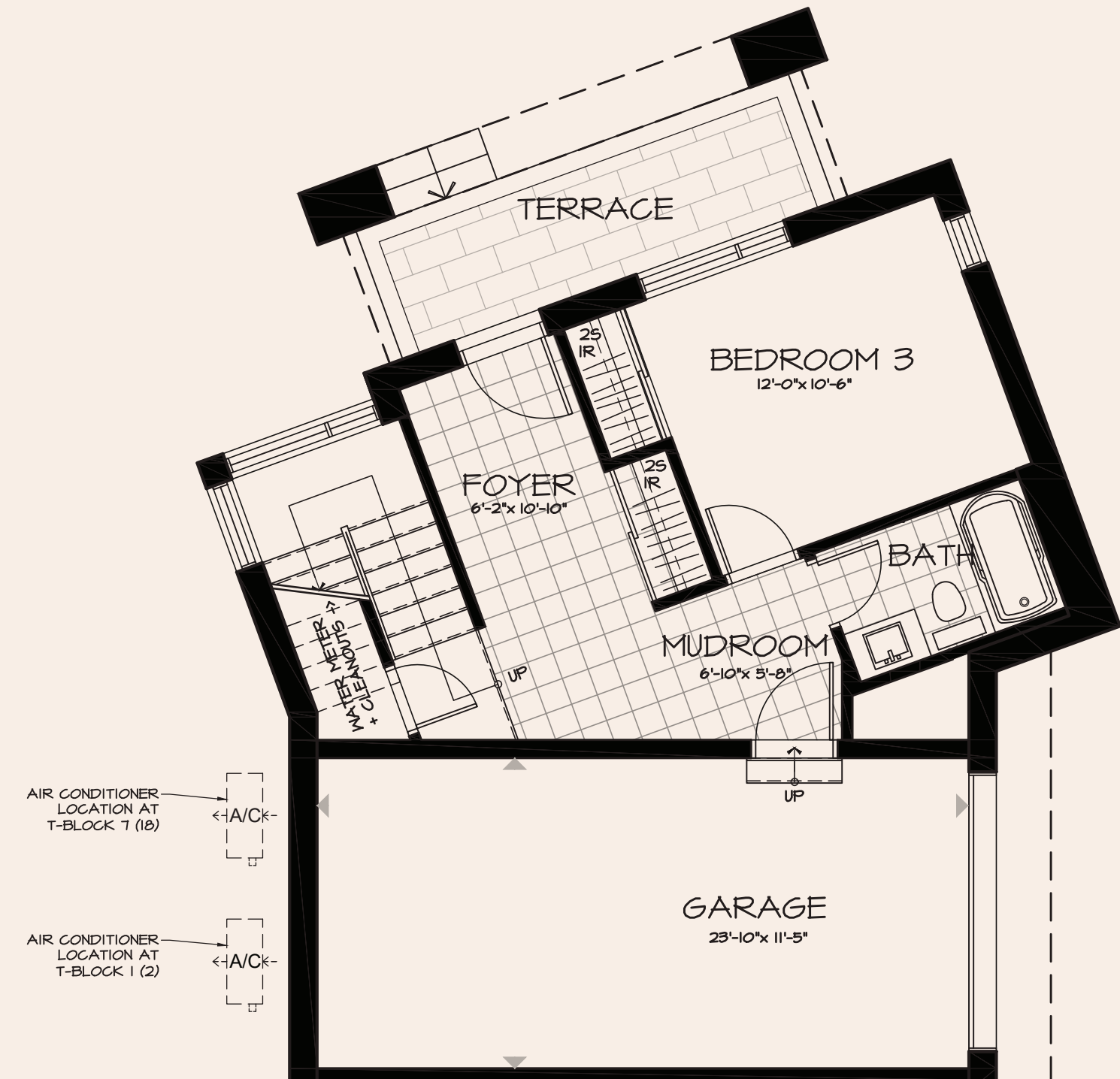
This three-storey townhouse showcases textured wide-plank oak floors in a soft greige tone, bringing a calm, neutral foundation to the main living areas. Faux marble-look tiles add an elegant, polished feel while maintaining durability in high-use spaces. A thoughtful mix of painted and wood cabinetry introduces depth and visual interest, creating a layered blend of texture and finishes that feels both modern and inviting throughout the home.

cQ Design Team

WINDSOR

FORECOURT
COLLECTION AT GREYSTONE





GROUND FLOOR

AIR CONDITIONER LOCATION AT T-BLOCK 7 (1B)

AIR CONDITIONER LOCATION AT T-BLOCK 1 (2)

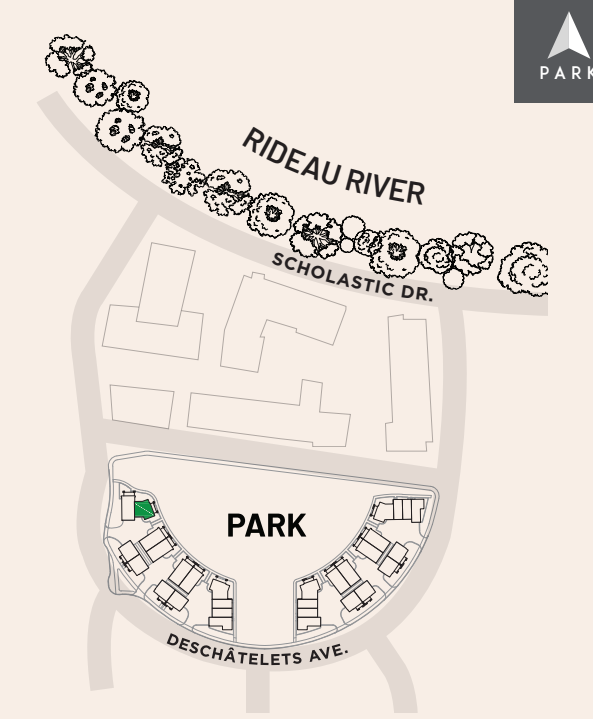
WINDSOR

LOT T1-02

2,090 SQ. FT.

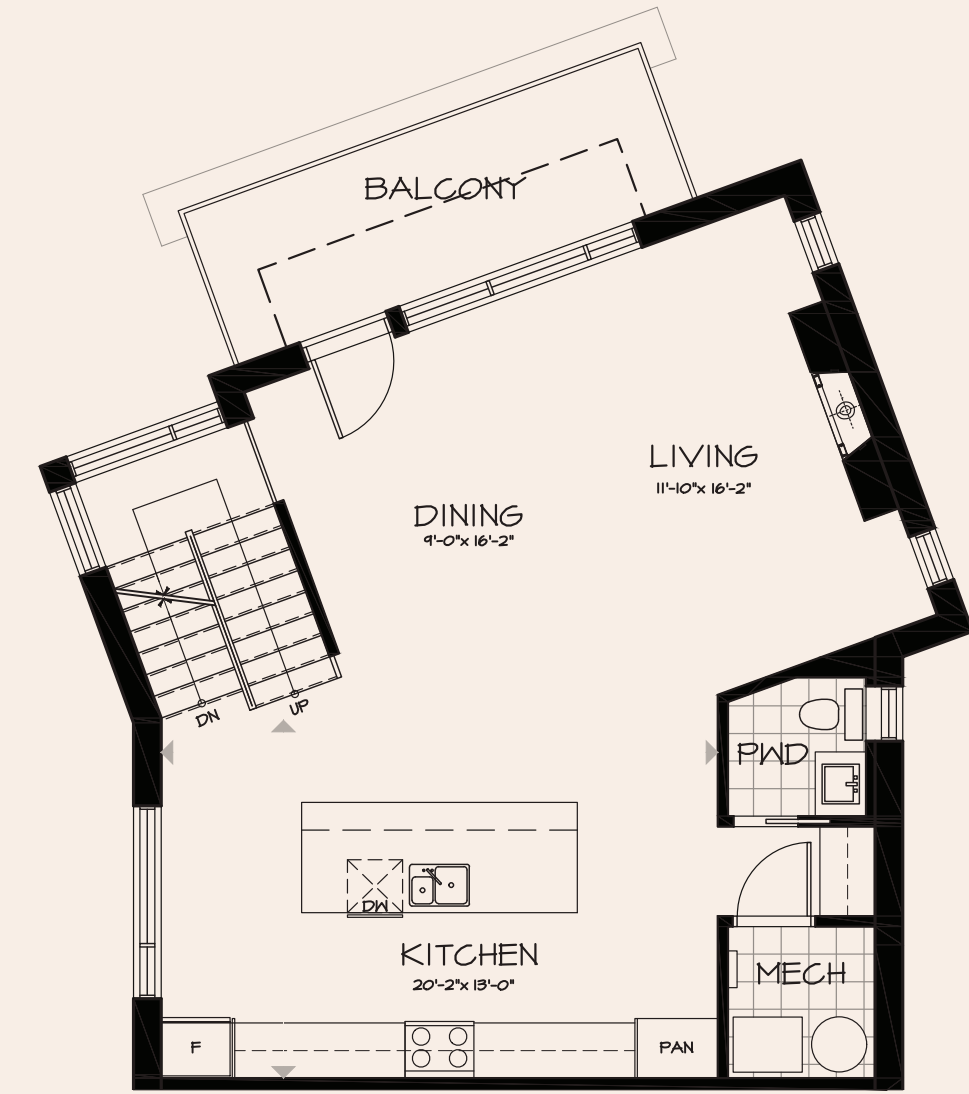
3

3.5

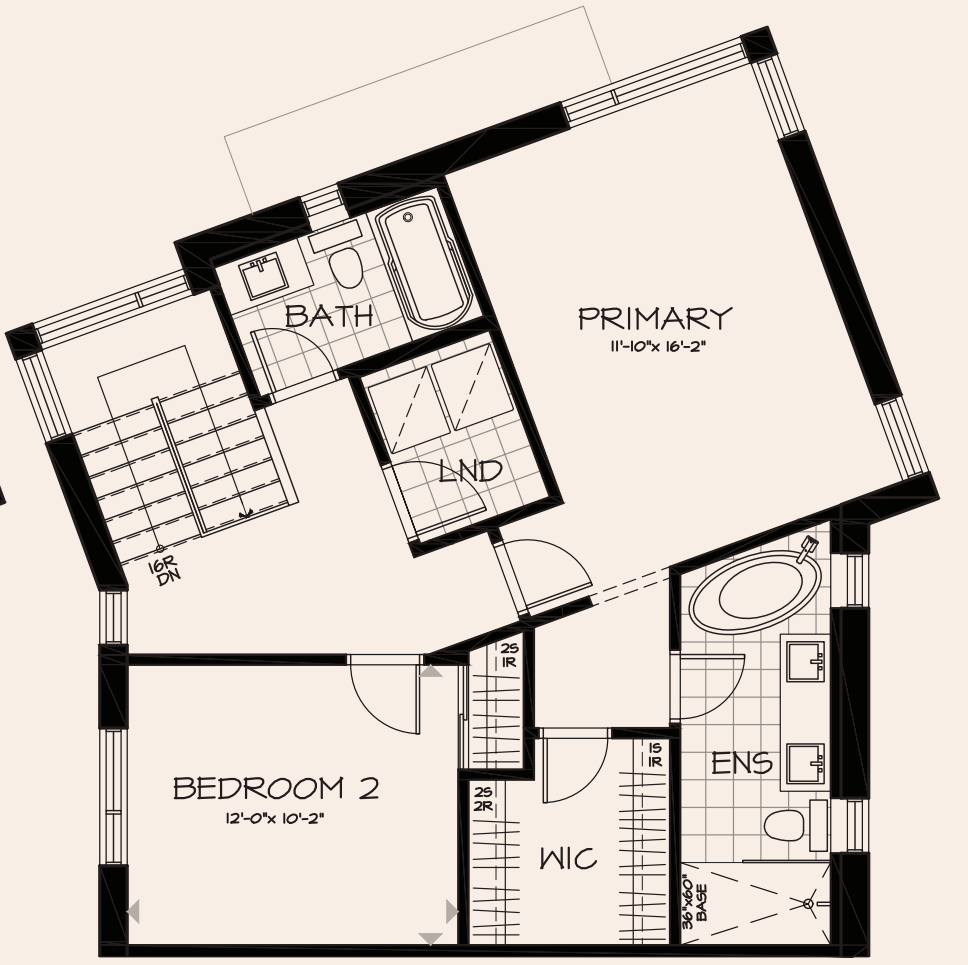


FORECOURT
COLLECTION AT GREYSTONE

Plans and specifications subject to change without notice. Actual usable floor space may vary from the stated floor area. Renderings are artist's concept. Bulkheads and Box Outs may be Required as Chases for Plumbing and Mechanical. See Sales Representative for more details. E. & O. E.



SECOND FLOOR



THIRD FLOOR

KITCHEN



Door Pull
BP37132CZ Brushed Gold



Kitchen Sink
Blanco Sink 1-3/4 Low Divide - White (401711)



Kitchen Faucet
Moen Sleek Matte Black



Cabinetry Island & Hood
Yuro Walnut Natural



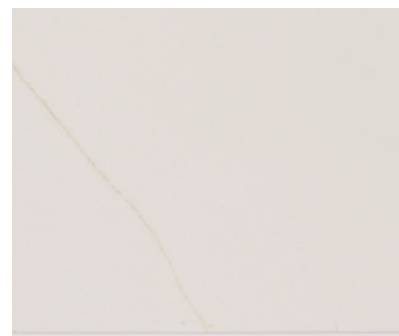
Hood Fan
Cyclone Stainless Insert



Cabinetry Perimeter
Yuro MDF White Cap



Backsplash
2.5x8 Artisan Glossy White - Offset



Countertop
Hanstone Aurelia Quartz

FINISHES



Kitchen renderings are for illustrative purposes only. Final kitchen design, colours, finishes, and bulkheads may vary. Appliances not included. All renderings are artist concepts. E. & O. E.

INTERIOR DETAILS



Ground Floor Tile
Centura 12x24 Chicago Lake



Hardwood Flooring Throughout
Lauzon 4" Red Oak Austin



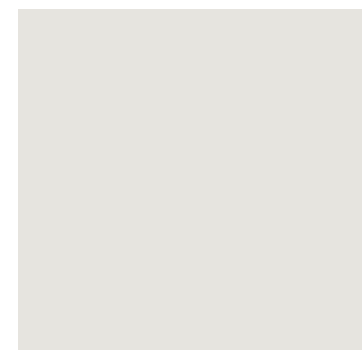
Interior Doors
Madison 1 Panel Interior Doors



Interior Door Hardware
Weiser Halifax Matte Black

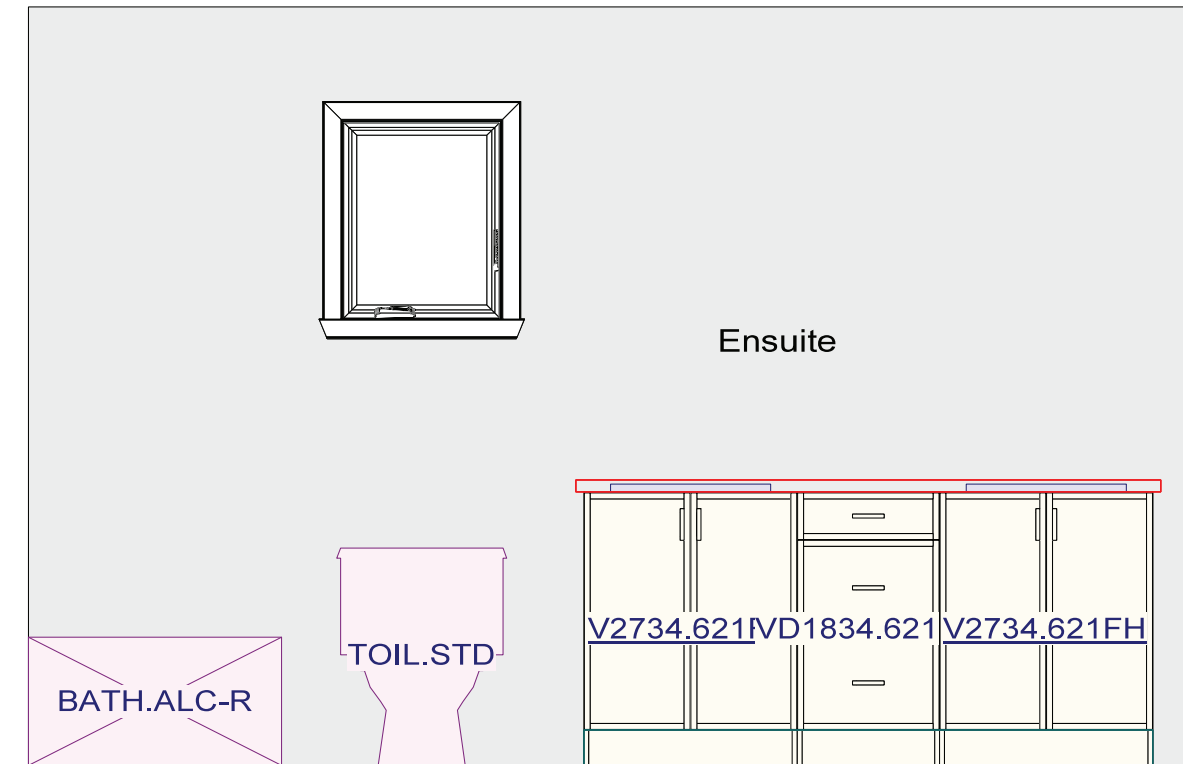


Trim Package
Trim Package #5

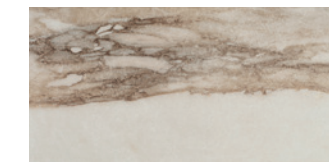


Interior Paint
Benjamin Moore OC-22 - Calm

ENSUITE



Cabinetry
Yuro Walnut Natural



Flooring
12x224 Livingstone Melange



Vanity Faucet
Moen Align Matte Black



Tub Faucet
Moen Align Matte Black



Shower Wall Tile
Soho Halo Grey Matte



Countertop
Hanstone Aurelia Quartz



Toilet
Proflo Jerrit Toilet



Vanity Sink
Proflo Rectangular Undermount

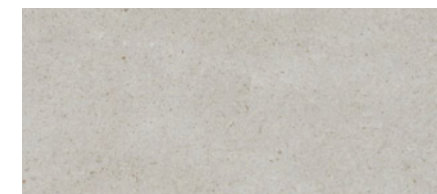
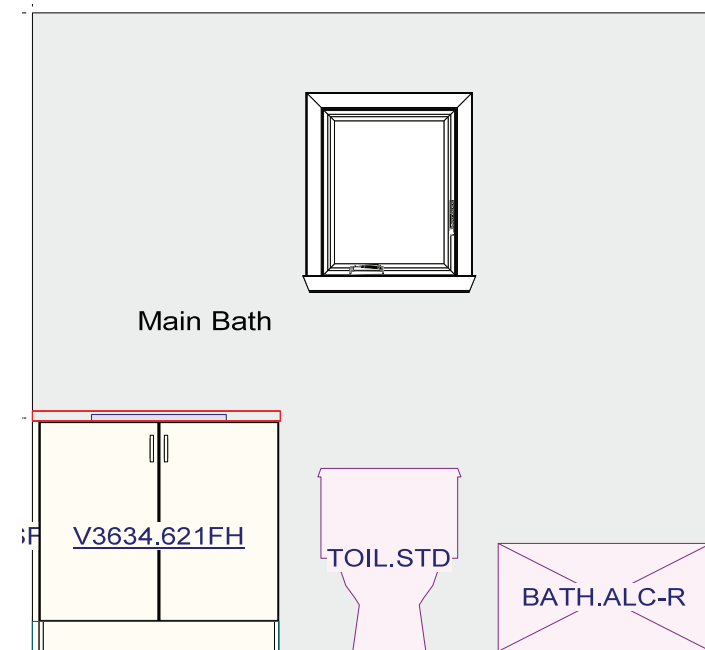


Door Pull
BP37132CZ Brushed Gold

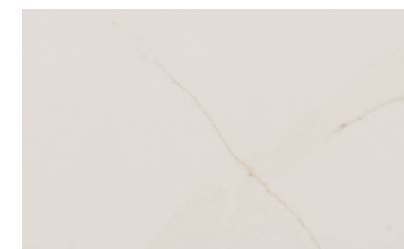


Shower Fixture
Moen Align Matte Black

MAIN BATH



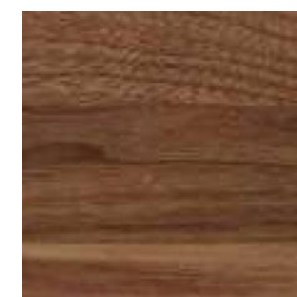
Flooring
Centura 12x24 Chicago Lake



Countertop
Hanstone Aurelia Quartz



Vanity Sink
Proflo Rectangular Undermount



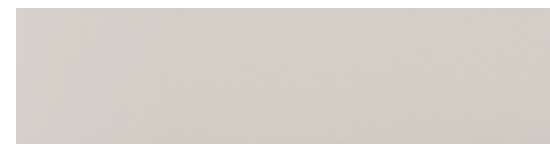
Flooring
Centura 12x24 Chicago Lake



Vanity Faucet
Moen Rizon Brushed Nickel



Tub/Shower Fixture
Moen Rizon Brushed Nickel



Shower/Tub Wall Tile
Soho 4x16 Halo Grey Matte - Horizontally Stacked

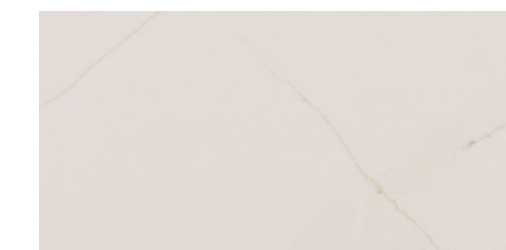
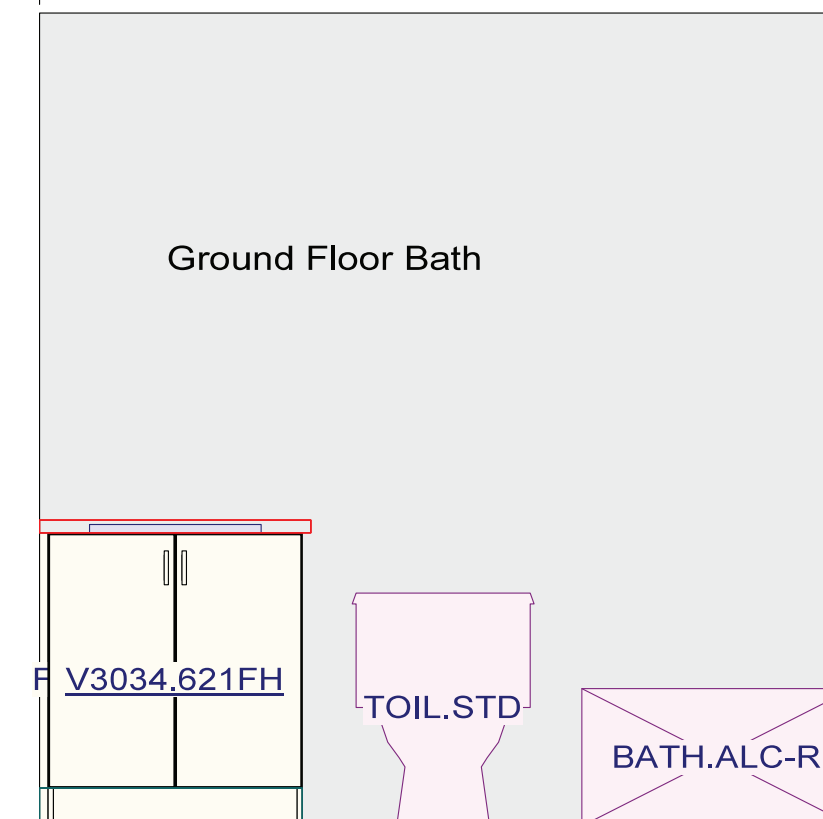


Door Pull
Matte Black Cityscape Pull

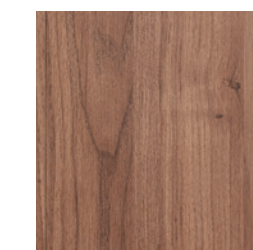


Toilet
Proflo Jerrit Toilet

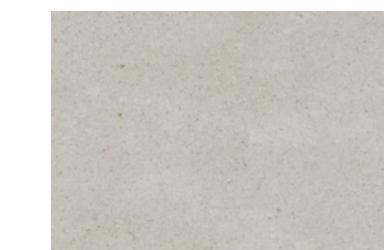
GROUND FLOOR BATH



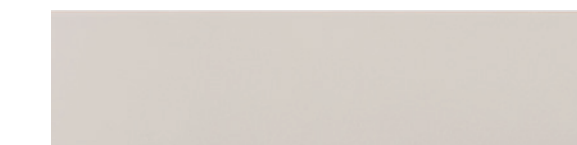
Countertop
Hanstone Aurelia Quartz



Cabinetry
Yuro Walnut Natural



Flooring
Centura 12x24 Chicago Lake



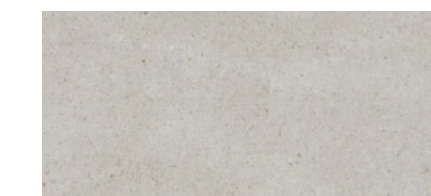
Shower/Tub Wall Tile
Soho 4x16 Halo Grey Matte - Horizontally Stacked



Door Pull
Matte Black Cityscape Pull



Tub/Shower Fixture
Moen Rizon Brushed Nickel



Cabinetry
Flat Panel Walnut Natural



Vanity Sink
Proflo Rectangular Undermount

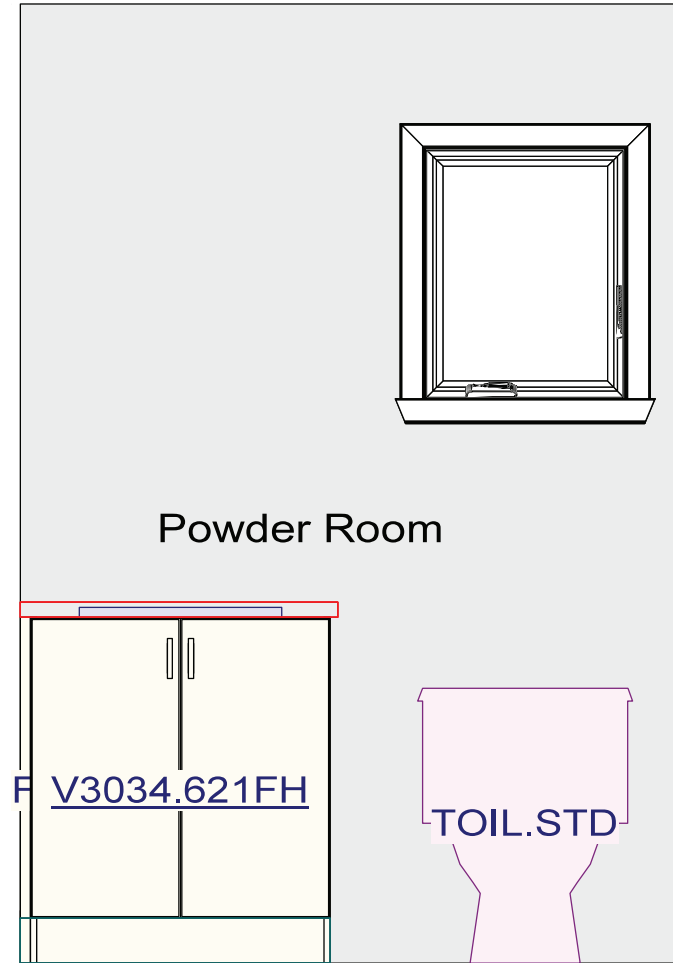


Vanity Faucet
Moen Rizon Brushed Nickel



Toilet
Proflo Jerrit Toilet

POWDER ROOM



Cabinetry
Yuro Walnut Natural



Flooring
Centura 12x24 Chicago Lake



Vanity Faucet
Moen Align Matte Black



Countertop
Hanstone Aurelia Quartz



Door Pull
Matte Black Cityscape Pull



Toilet
Proflo Jerrit Toilet



Vanity Sink
Proflo Rectangular Undermount

FIREPLACE AND RAILING DETAIL



Fireplace
Savannah BL21 Linear Firebox



Railing
N/A

FOR THE
BEST
COMMUNITY
DESIGN



Lindsay Callihoo

Sales and Leasing Consultant

EMAIL lcallihoo@eqhomes.ca

TEL 613.569.3043

ADDRESS 360 Deschâtelets Ave
Ottawa, ON K1S 5Y1

For more information, please call 613.569.3043
or contact the Leasing/Sales Office
using the 1Valet entry system.





Greystonevillage.ca/forecourt

DESIGNED BY RYAN DESIGN INTERNATIONAL