

TOWNHOME T4-7

BRANTWOOD

2,065_{SQFT}

3 25

FORECOURT
COLLECTION AT GREYSTONE



For How You

LIVE

Welcome to the epitome of refined living by eQ Homes.

Welcome to Forecourt Collection, an exclusive enclave of Townhomes and Semi-Townhomes in the heart of Greystone Village. Each residence utilizes a modern blend of materials to establish a distinctive architectural identity. Thoughtfully crafted, open-concept interiors, enhanced by upscale appointments, ensure families enjoy a fully optimized lifestyle that balances elegant form with intuitive function. This is Forecourt Collection. City living in a refined, riverside setting.

E. & O. E. All renderings are artist concept. The final park plan will be designed and constructed by the City of Ottawa Parks Department and will be done through a public process.



A village at

HEART

Greystone Village is an innovative community nestled in the heart of Old Ottawa East, envisioned by Ottawa's renowned teams: Regional Group, eQ Homes, and Hobin Architecture. Perfectly situated between Ottawa's scenic Rideau River and Rideau Canal. Embrace a lifestyle filled with walking trails, biking, and waterfront activities just steps from home. Discover a vibrant community offering arts, culture, shopping, dining, and entertainment – everything you desire, all in one place.

Complementing Greystone Village's vibrant location between two of Ottawa's most picturesque waterways is its Grande Allée, the historic treelined formal gateway and central boulevard that runs through the heart of the community. Here you'll find a bustling farmers' market, speciality stores, restaurants and cafés.

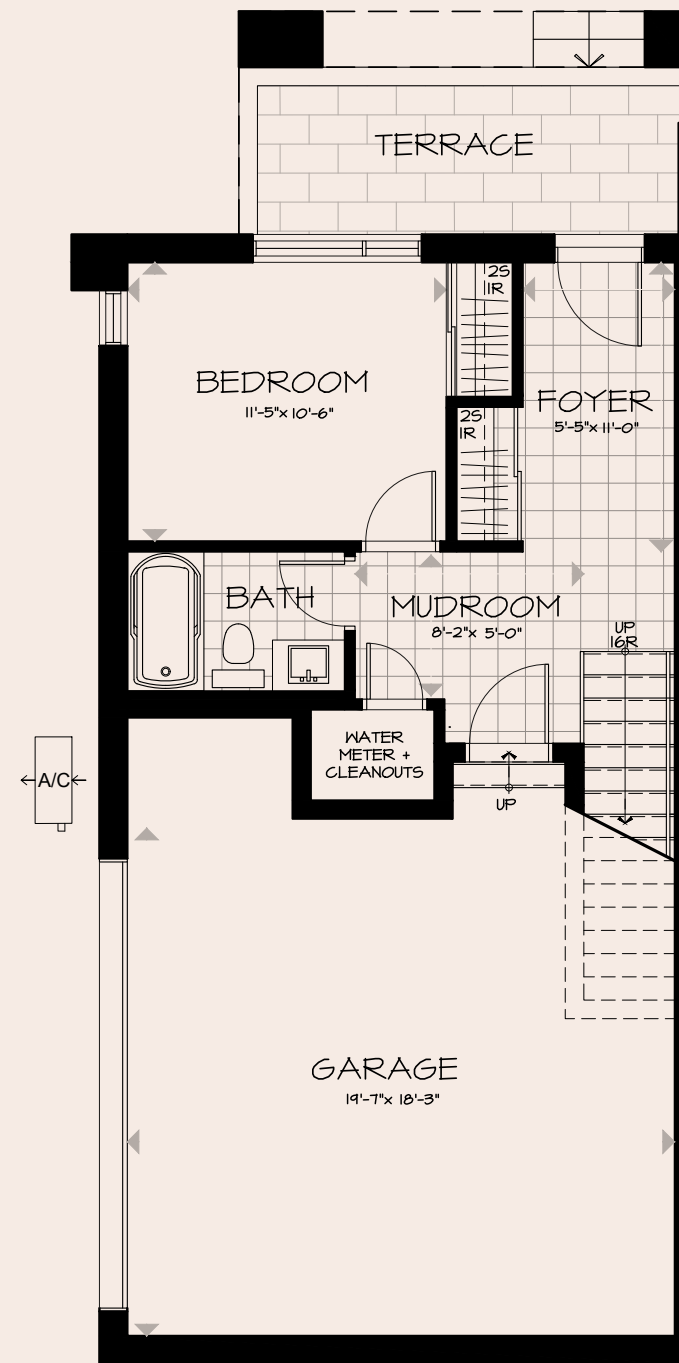
This three-storey townhouse showcases textured wide-plank oak floors in a soft greige tone, bringing a calm, neutral foundation to the main living areas. Faux marble-look tiles add an elegant, polished feel while maintaining durability in high-use spaces. A thoughtful mix of painted and wood cabinetry introduces depth and visual interest, creating a layered blend of texture and finishes that feels both modern and inviting throughout the home.

eQ Design Team



BRANTWOOD

FORECOURT
COLLECTION AT GREYSTONE



GROUND FLOOR

BRAANTWOOD

LOT T4-7

↖ ↗
SQ.FT 2,065 SQ. FT.
↙ ↘

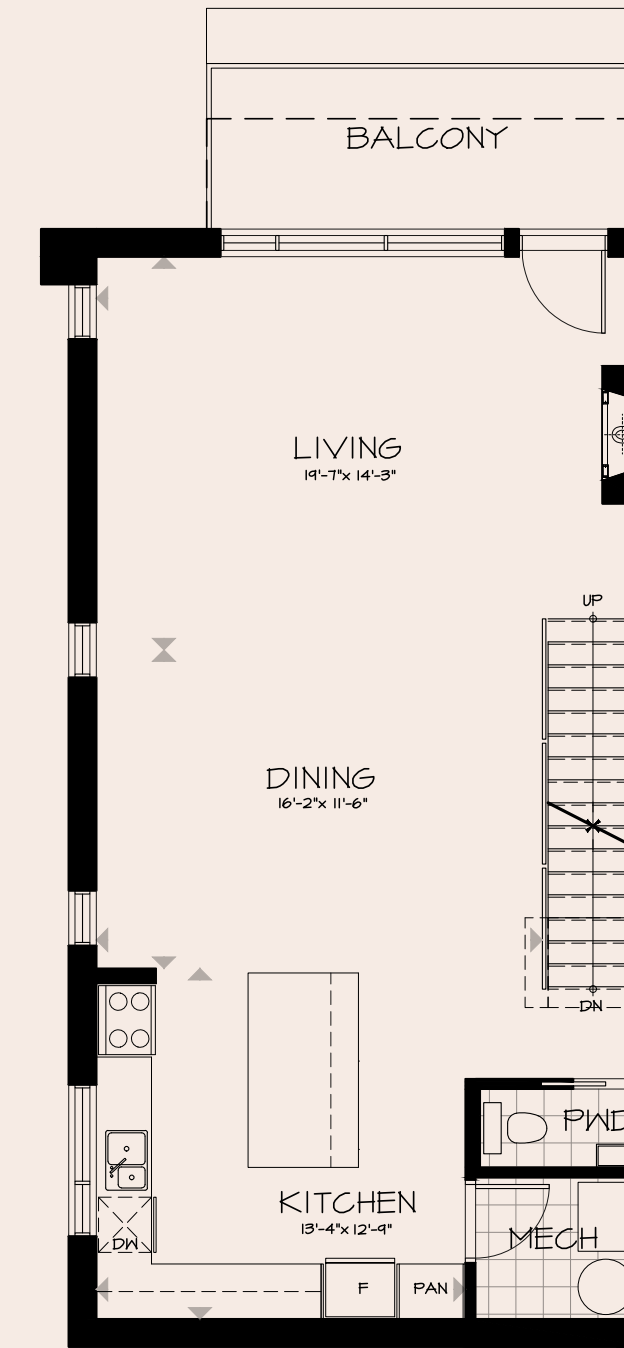
🛏 3

🚿 2.5

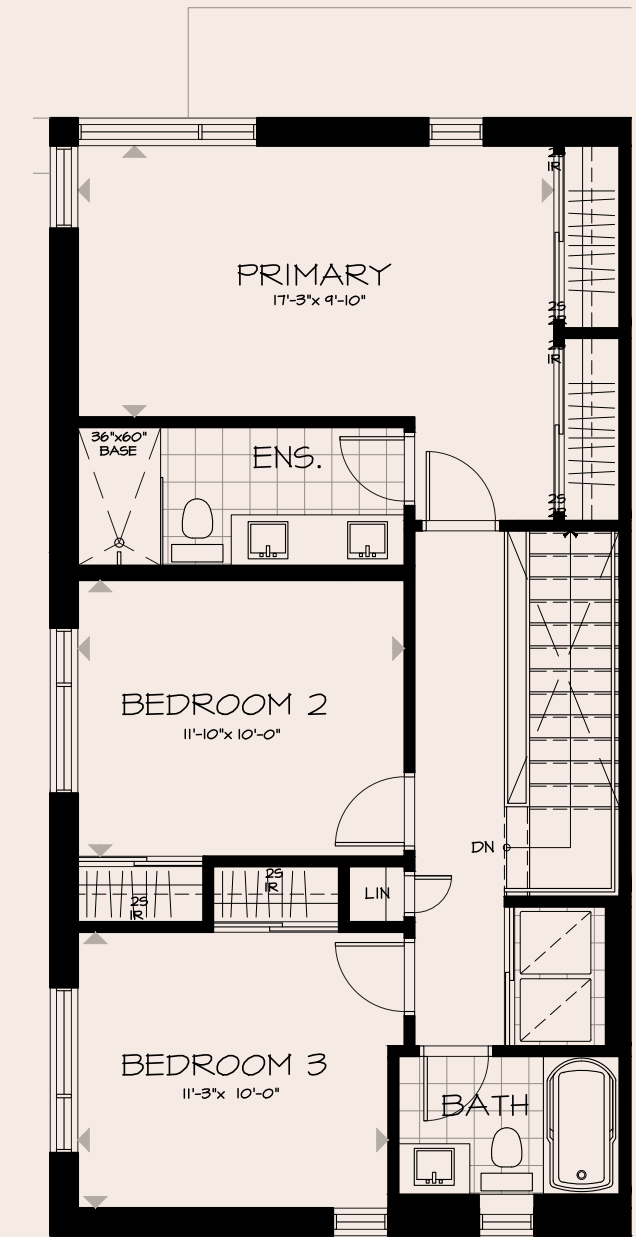


FORECOURT
COLLECTION AT GREYSTONE

Plans and specifications subject to change without notice.
Actual usable floor space may vary from the stated floor area.
Renderings are artist's concept. Bulkheads and Box Outs may be Required as Chases for Plumbing and Mechanical. See Sales Representative for more details. E. & O. E.



SECOND FLOOR



THIRD FLOOR

KITCHEN



Kitchen Sink
Bristol B1807 Undermount



Hood Fan
Cyclone Stainless Insert



Door Pull
Matte Black Cityscape Pull



Kitchen Faucet
Moen Sleek Matte Black



Cabinetry
Salem MDF Nordic



Countertop
Silestone Bronze Rivers Quartz



Backsplash
Centura 5x5 La Riviera Gris Nuage

FINISHES



Kitchen renderings are for illustrative purposes only. Final kitchen design, colours, finishes, and bulkheads may vary. Appliances not included. All renderings are artist concepts. E. & O. E.

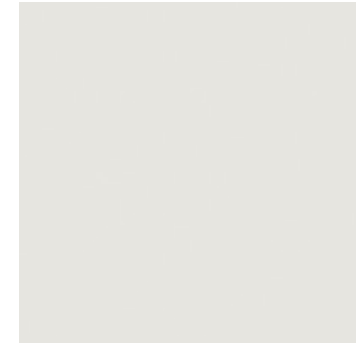
INTERIOR DETAILS



Interior Doors
Madison 1 Panel Interior Doors



Interior Door Hardware
Weiser Halifax Matte Black



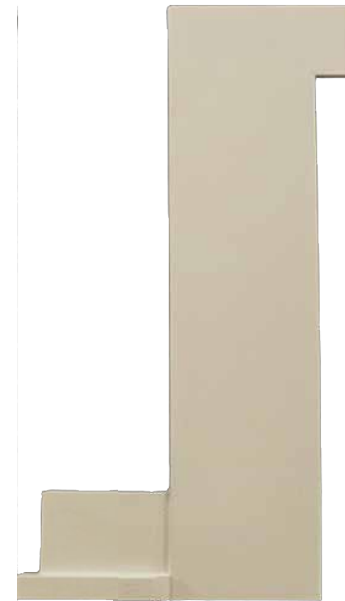
Interior Paint
Benjamin Moore OC-22 - Calm



Main Entry Tile
12x24 Livingstone Bianco

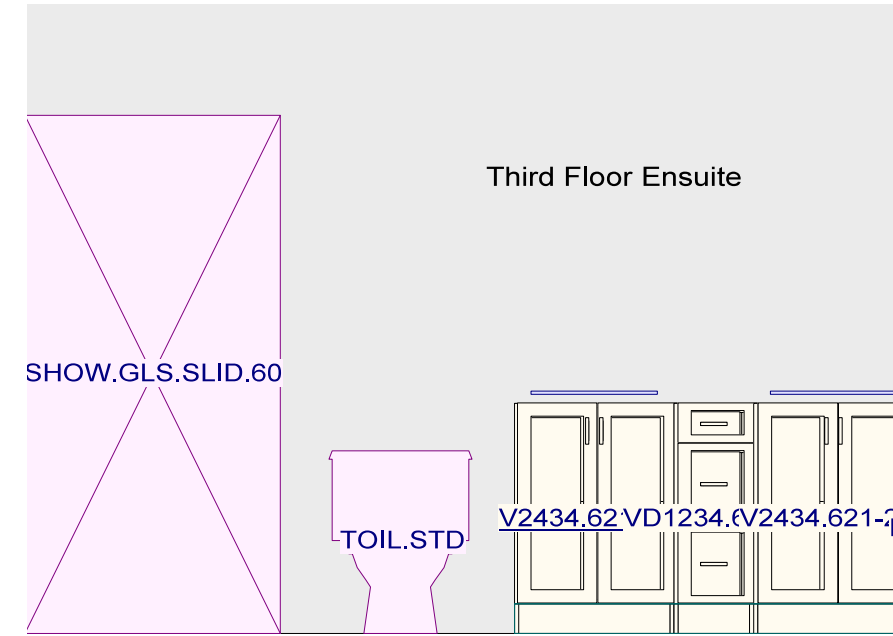


Hardwood Flooring
Lauzon 5" Red Oak - Rockport



Trim Package
Trim Package #5

ENSUITE



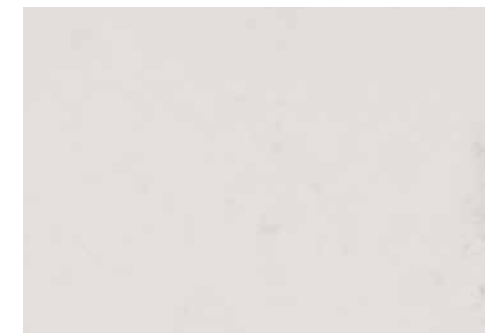
Cabinetry
Salem Maple Frappe



Flooring
12x24 Livingstone Nero



Shower Wall Tile
4x16 Canvas White - Vertically Stacked



Countertop
Hanstone Montauk Quartz



Toilet
Proflo Jerrit Toilet



Vanity Sink
Proflo Rectangular Undermount



Door Pull
Matte Black Cityscape Pull

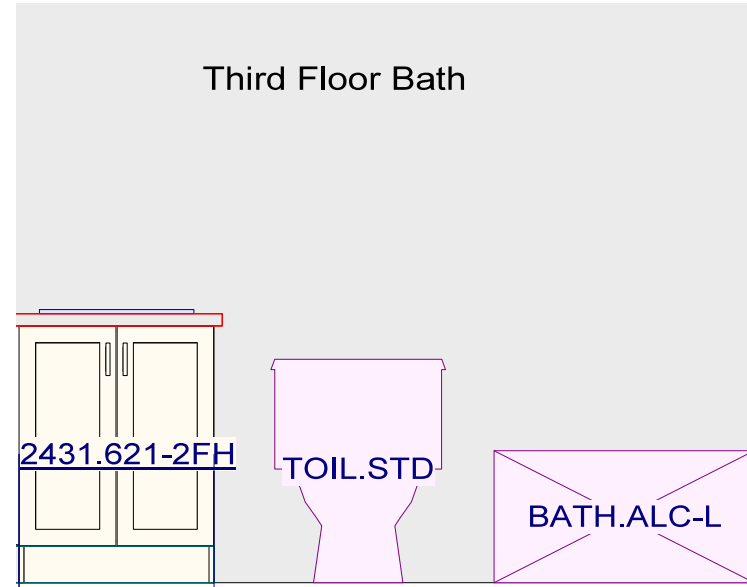


Vanity Faucet
Moen Genta Matte Black



Shower Fixture
Moen Genta Matte Black

MAIN BATH



Toilet
Proflo Jerrit Toilet



Vanity Sink
Proflo Rectangular Undermount



Vanity Faucet
Moen Rizon Brushed Nickel



Door Pull
Matte Black Cityscape Pull



Tub/Shower Fixture
Moen Rizon Brushed Nickel



Cabinetry
Salem Maple Cortado



Flooring
12x24 Westside White

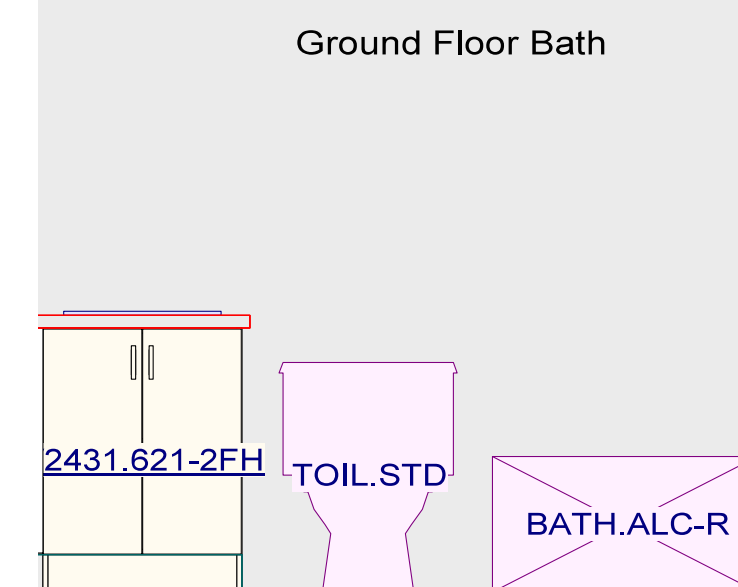


Shower/Tub Wall Tile
4x16 Canvas White - Vertically Stacked



Countertop
Silestone Blanco Maple

GROUND FLOOR BATH



Toilet
Proflo Jerrit Toilet



Vanity Sink
Proflo Rectangular Undermount



Vanity Faucet
Moen Rizon Brushed Nickel



Door Pull
Matte Black Cityscape Pull



Tub/Shower Fixture
Moen Rizon Brushed Nickel



Cabinetry
Salem Maple Cortado



Flooring
12x24 Westside White



Shower/Tub Wall Tile
4x16 Canvas White - Vertically Stacked



Countertop
Silestone Blanco Maple

FIREPLACE AND RAILING DETAIL

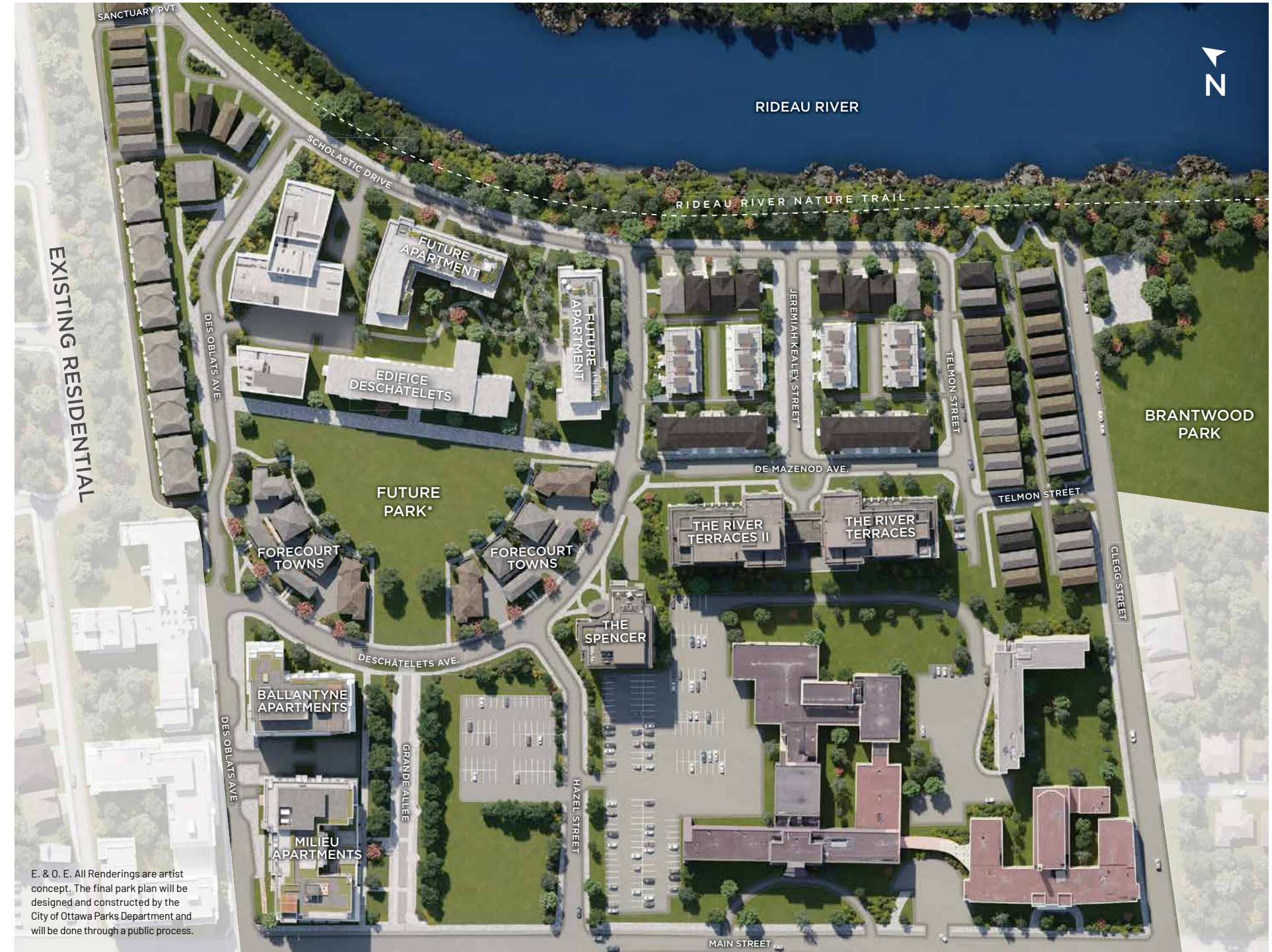


Fireplace
Napoleon BL36 Linear Firebox



Railing
N/A

FOR THE BEST COMMUNITY DESIGN





E. & O. E. All renderings are artist concept.

Lindsay Callihoo

Sales and Leasing Consultant

EMAIL lcallihoo@eqhomes.ca

TEL 613.569.3043

ADDRESS 360 Deschâtelets Ave
Ottawa, ON K1S 5Y1

For more information, please call 613.569.3043
or contact the Leasing/Sales Office
using the 1Valet entry system.





Greystonevillage.ca/forecourt