



ELEVATION F

ARTIST'S CONCEPT


35'  
2-STOREY SINGLES

**THE PIPER I**  
4 BEDROOM ~ 2,242 SQ. FT.



**THE PIPER I**  
4 BEDROOM ~ 2,242 SQ. FT.

35'  
2-STOREY SINGLES




ELEVATION M

ARTIST'S CONCEPT



ELEVATION B

ARTIST'S CONCEPT

35'  
2-STOREY SINGLES

# THE PIPER I ~ 2,242 SQ. FT.

WITH OPT. FINISHED REC. ROOM - 2,795 SQ. FT.  
WITH OPT. FINISHED BASEMENT - 2,852 SQ. FT.



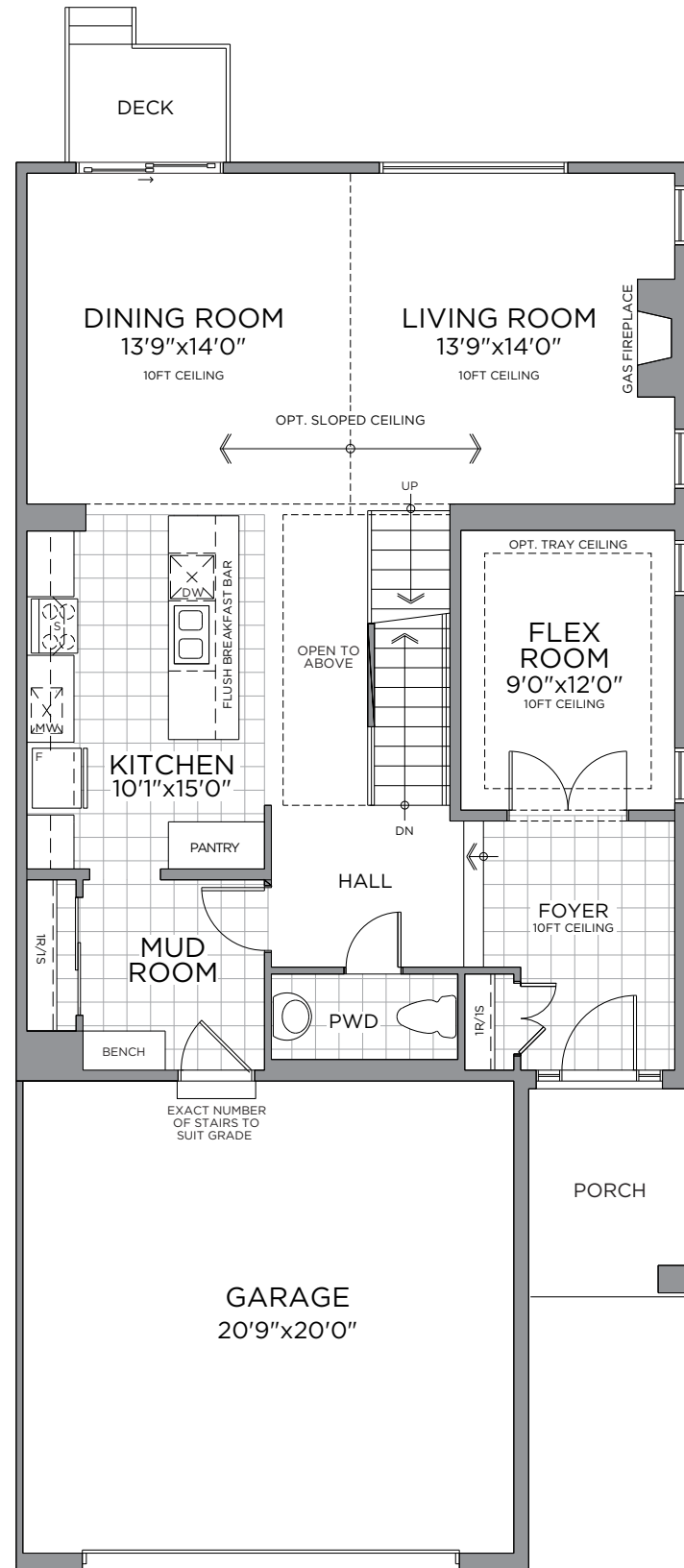
ELEVATION B



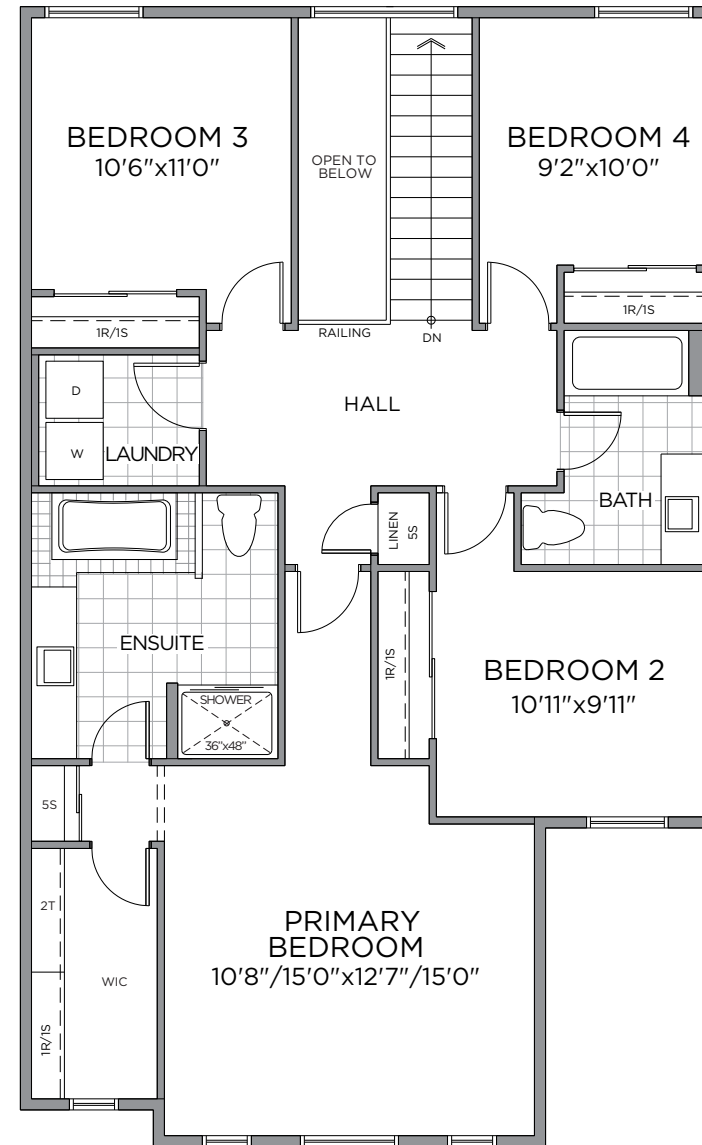
ELEVATION F



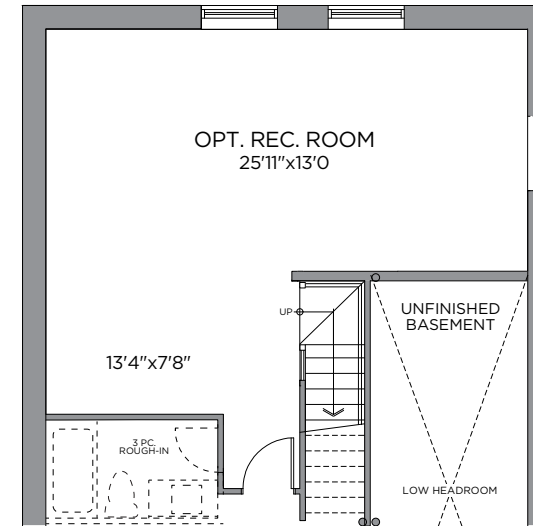
ELEVATION M



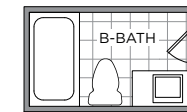
GROUND FLOOR



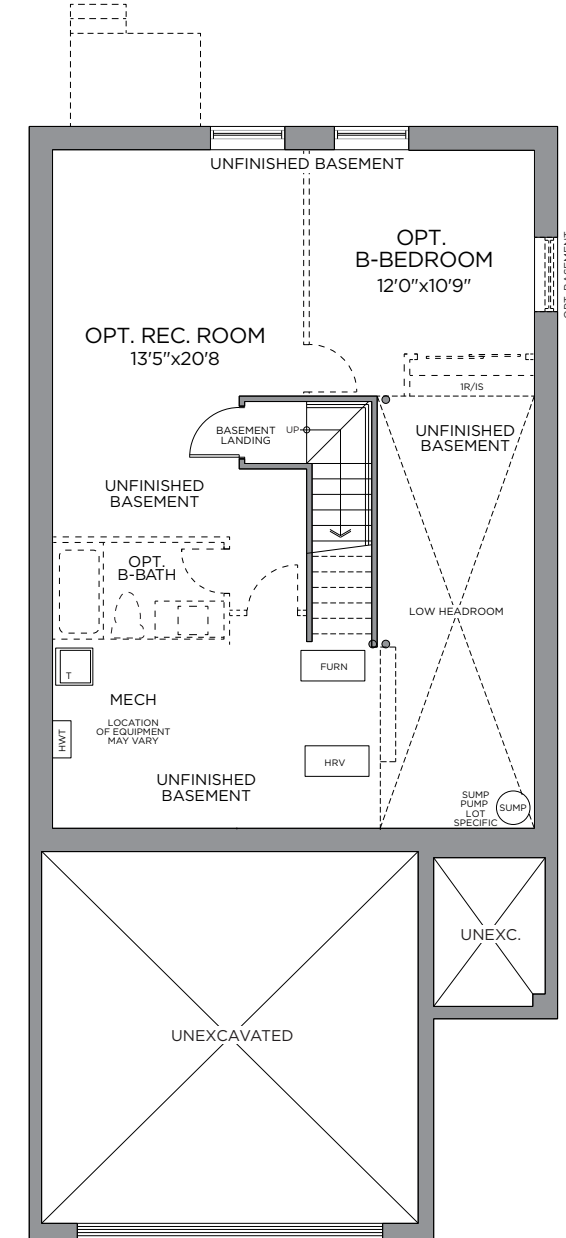
SECOND FLOOR



OPT. FINISHED BASEMENT REC. ROOM  
553 SQ. FT.



OPT. FINISHED BASEMENT BATHROOM



STANDARD BASEMENT PLAN  
OPT. FINISHED BASEMENT PLAN  
610 SQ. FT.

\*\* Front window and porch sizing/locations vary based on elevations, see agent for detailed drawings. Prices, dimensions and specifications are subject to change without notice. All renderings are artist's concept. E. & O.E. February 2026.

