

Designer Finished Homes

# SUITE 606

MODEL 7 | 610 SQ. FT. | 1 BED | 1 BATH

THE  
**SPENCER**  
AT GREYSTONE



Artist's concept. E.&O.E.





THE  
**SPENCER**  
 AT GREYSTONE

WELCOME TO THE SPENCER AT  
**GREYSTONE VILLAGE**

MODERN,  
 ICONIC,  
**THE SPENCER**

Re-imagine Condominium Living

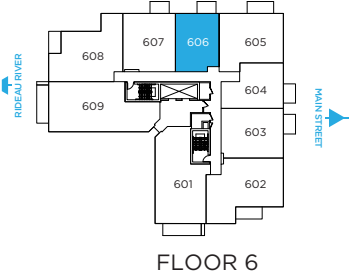
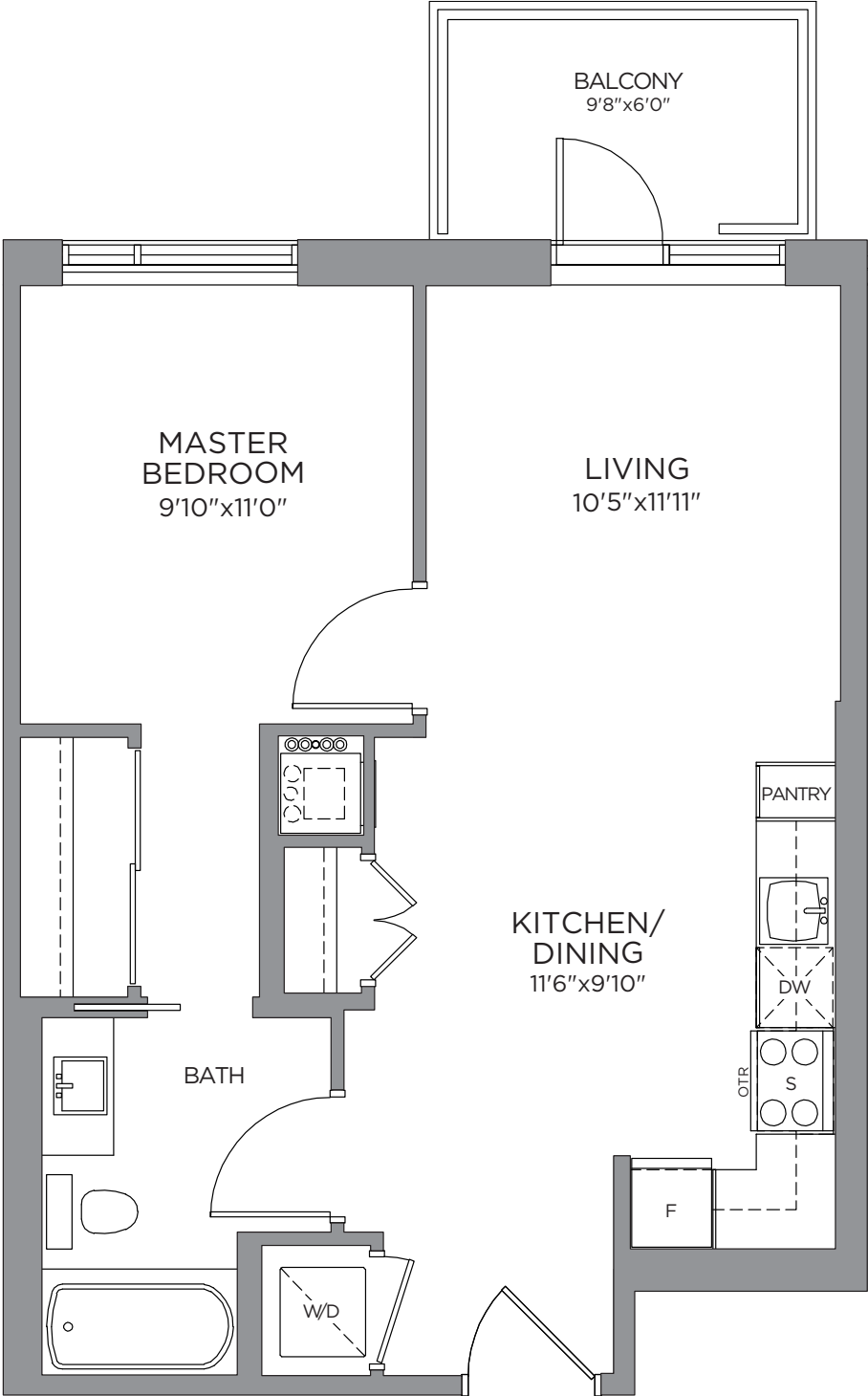


# Designer Finished Homes

# SUITE 606

MODEL 7 | 610 SQ. FT. | 1 BED | 1 BATH

THE  
**SPENCER**  
AT GREYSTONE



Prices, dimensions and specifications are subject to change without notice. All renderings are artist's concept. E. & O.E. April 2024.

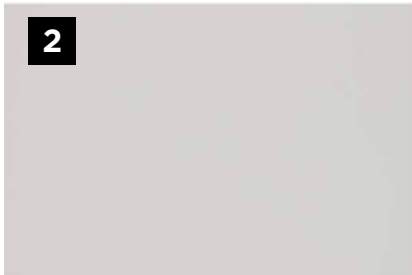
# FEATURES & FINISHES

## C1: SCANDINAVIAN STYLE

### WHOLE HOUSE

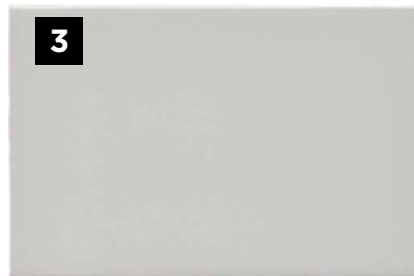


1



2

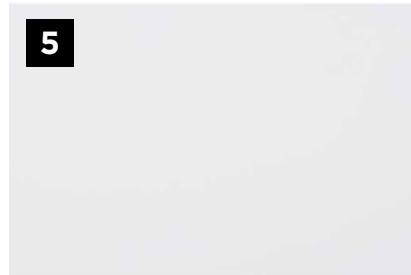
### KITCHEN



3

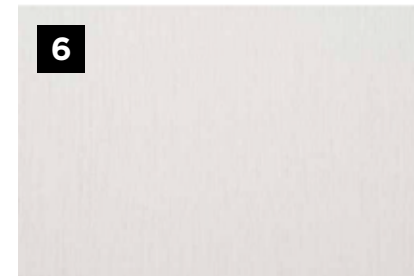


4

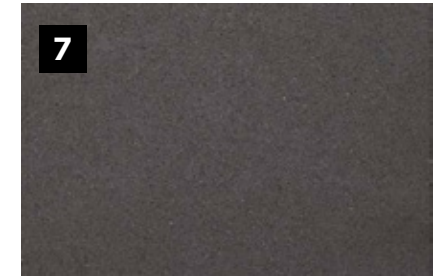


5

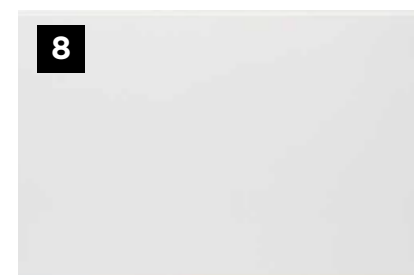
### BATHROOM



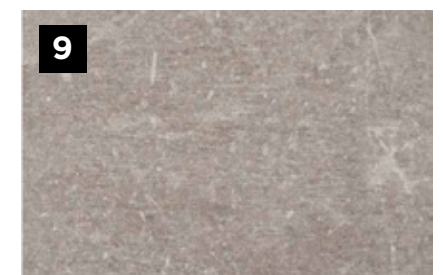
6



7



8



9

E.&O.E.

1

**FLOORING**  
White Oak  
Natural  
Engineered  
Hardwood

2

**PAINT**  
Repose Grey

3

**BACKSPLASH**  
Silver Grey

4

**COUNTERTOP**  
Eternal  
Calacatta  
Gold Quartz

5

**CABINET**  
High Gloss  
White

6

**CABINET**  
Latitude  
North

7

**COUNTERTOP**  
Marengo  
Quartz

8

**WALL TILE**  
White Gloss

9

**FLOOR TILE**  
Nexus Mica

Colour and specifications are subject to change without notice. E. & O.E.

# APPLIANCES

ENJOY THE EASE AND LUXURY OF LIFE WITH THE HELP OF **MODERN APPLIANCES**

**1**



**2**



**3**



**4**



**5**



**6**



E.&O.E.

**1**

**FRIDGE**  
24" Blomberg  
Fridge

**2**

**MICROWAVE**  
Panasonic  
Over The  
Range  
Microwave

**3**

**DISHWASHER**  
24" Blomberg  
Tall Tub  
Panel Ready  
Dishwasher

**4**

**OVEN**  
30" Blomberg  
Slide-In  
Electric  
Range

**5**

**WASHER**  
24" Samsung  
Washing  
Machine

**6**

**DRYER**  
24" Samsung  
Dryer

THE  
**SPENCER**  
AT GREYSTONE

Contact your **Spencer Sales Consultant**  
to book an appointment.



**CLAUDIA WARNER-JACOBS**  
New Home Sales Consultant  
TEL: 613-569-3043  
EMAIL: [CWarnerJacobs@eqhomes.ca](mailto:CWarnerJacobs@eqhomes.ca)

**THE SPENCER SALES OFFICE:**  
223 Hazel St, Ottawa, ON K1S 1C4

All drawings are artist's concept and may vary slightly from the final product. Actual usable floorspace may vary from stated area, and square footage has been calculated based on usable living space according to the TARION rules and does not include garage or unfurnished basement areas. Drawings may show optional features which may not be included in the base price. Bulkheads & box outs may be required as chases for plumbing & mechanical. Garage main door location, if applicable, may vary subject to grade. In an ongoing review of homeowner's needs, changes may have been incorporated into our "New Home Features" and construction techniques. Specifications subject to change without notice. Manufacturers' images are shown and may differ from the final product. E. & O.E. April 2024.

