

THE
SPENCER
AT GREYSTONE



DESIGNER
FINISHED
SUITES

SUITE 701
MODEL 22B | 2,088 SQ. FT. | 2 BED | 2 BATH

ELEVATE YOUR LIVING

This stunning 2 Bed+Media Suite dazzles with a sophisticated palette of natural tones and materials of the very highest quality, carefully curated to maximize the magnificent proportions of this spacious residence. From its sleek oak hardwood floor to its marble ensuite with designer Moen fixtures and quartz countertops, no detail has been overlooked to provide the ultimate expression of elegant, elevated living.

Live in the heart of Greystone Village, a visionary, master planned community located between two of Ottawa's most picturesque waterways. Stroll along charming streetscapes through the vital and bustling community, then take a path along the Rideau River and you will find yourself amidst simply spectacular natural green spaces. Greystone Village is the ultimate address in Ottawa, redefining modern life.



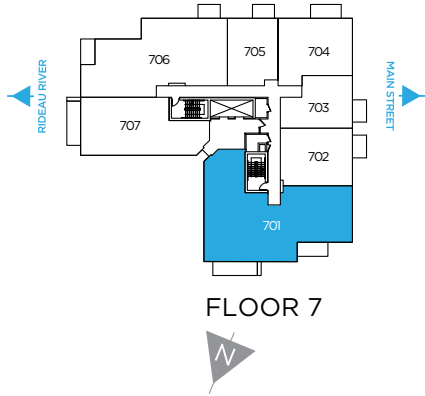
DESIGNER FINISHED SUITE

SUITE 701

MODEL 22B

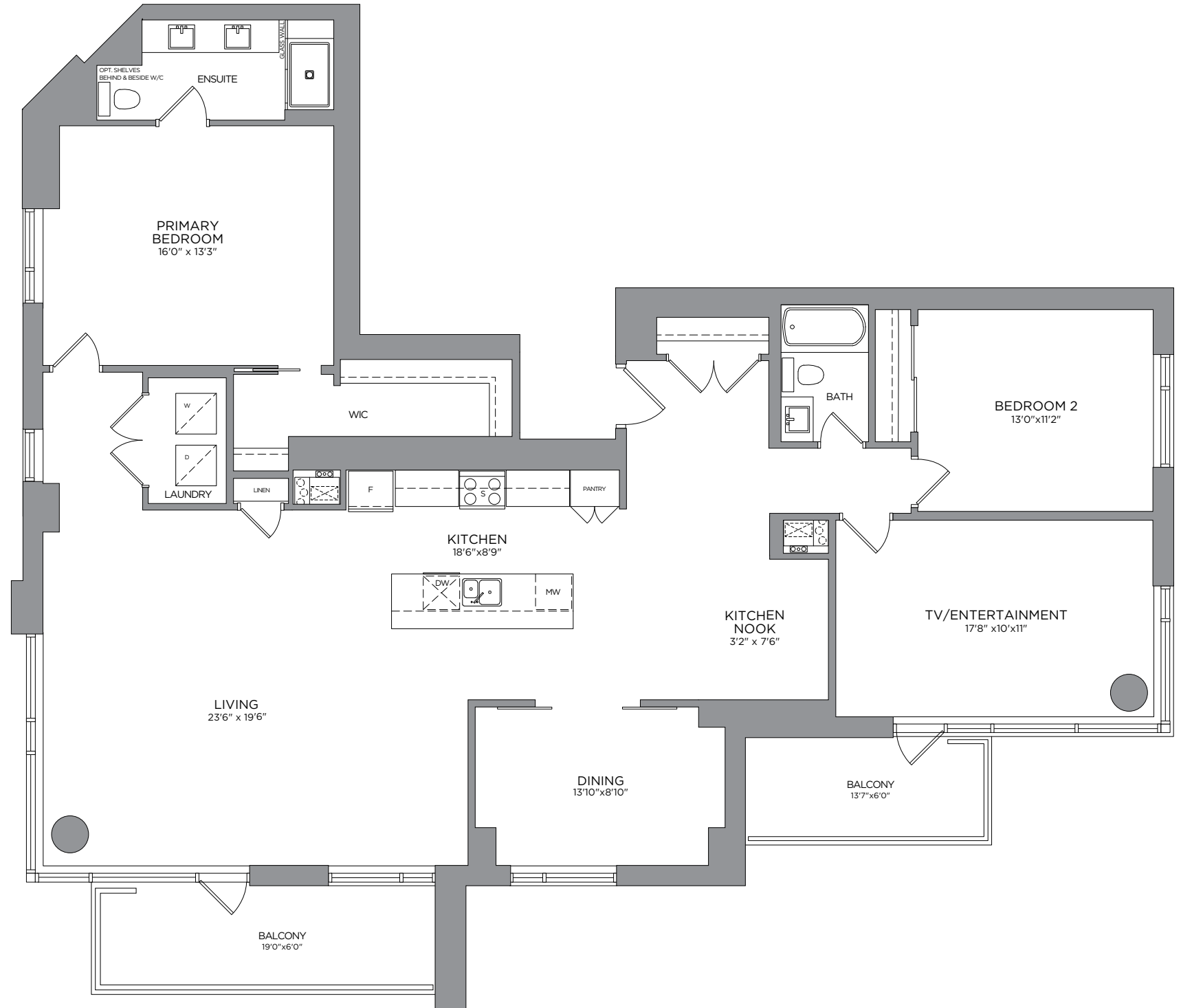
2,088 SQ. FT.

2 BED | 2 BATH



THE
SPENCER
AT GREYSTONE

Prices, dimensions and specifications are subject to change without notice. All renderings are artist's concept. E. & O.E. June 2024.



DESIGNER FINISHED SUITE

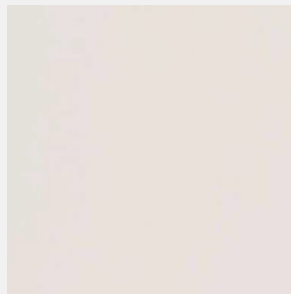
LUXURY LIVING

Opulent marble style quartz countertops and backsplash with luxurious white oak flooring throughout. Captivating black accents in the primary ensuite add dramatic flair. Don't miss your chance to experience the height of luxury living in this stunning condo.

SUITE FLOORING

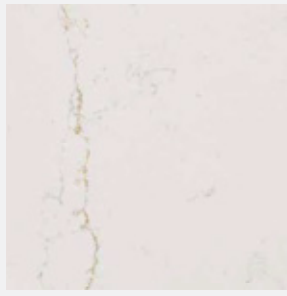


FLOORING
Acadian Oak
Engineered Hardwood

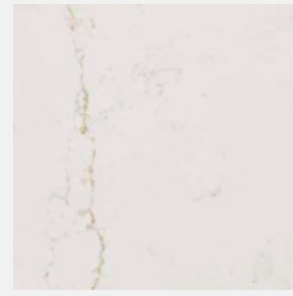


PAINT
Zurich White

KITCHEN



COUNTERTOP
Ethereal Glow
Quartz



BACKSPLASH
Ethereal Glow
Quartz

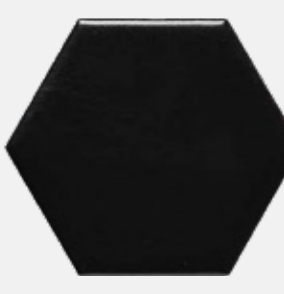


CABINET
White Shaker

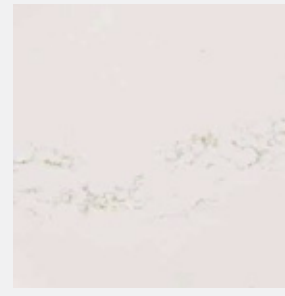
BATHROOM/ENSUITE



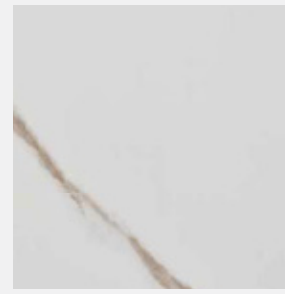
CABINET
Sheer Beauty



SHOWER FLOOR
Matte Black Hex



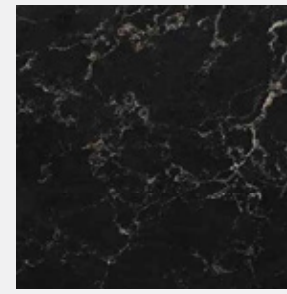
**MAIN BATH
COUNTERTOP**
Strato Quartz



ENSUITE WALL
Calacatta Oro



**MAIN BATH
WALLS**
Pecora Glossy White



**ENSUITE
COUNTERTOP**
Vanilla Noir Quartz



BATH FLOOR
Calacatta Oro

Colour and specifications
are subject to change
without notice. E. & O.E.

WELL APPOINTED DETAILS

ENJOY THE PLETHORA OF **UPGRADED FIXTURES**



KITCHEN FAUCET
MOEN STO 1-Handle
Lever Kitchen Faucet
Matte Black



KITCHEN SINK
Dropdown Stainless
Steel



VANITY FAUCET
MOEN Align Single
Handle Matte Black



**ENSUITE HAND
SHOWER**
MOEN Engage Matte
Black



VANITY FAUCET
MOEN Align Single
Handle Matte Black



MAIN BATH SHOWER
Moen Align Posi-Temp
Matte Black

APPLIANCES

ENJOY THE EASE AND LUXURY OF LIFE WITH THE HELP OF
MODERN APPLIANCES



FRIDGE
24" Blomberg
Fridge



BAR FRIDGE
Frigidaire
Gallery 5.3 cu. ft.



DISHWASHER
24" Blomberg
Tall Tub Panel Ready Dishwasher
Microwave



WASHER
24" Samsung
Washing Machine



MICROWAVE
Panasonic
Over The Range
Microwave



OVEN
30" Blomberg Slide-In
Electric Range



DRYER
24" Samsung
Dryer

THE
SPENCER
AT GREYSTONE



Contact your **Spencer Sales Consultant** to book an appointment.

CLAUDIA WARNER-JACOBS
New Home Sales Consultant
TEL: 613-569-3043
EMAIL: CWarnerJacobs@eqhomes.ca

THE SPENCER SALES OFFICE:
223 Hazel St, Ottawa, ON K1S 1C4

All drawings are artist's concept and may vary slightly from the final product. Actual usable floorspace may vary from stated area, and square footage has been calculated based on usable living space according to the TARION rules and does not include garage or unfurnished basement areas. Drawings may show optional features which may not be included in the base price. Bulkheads & box outs may be required as chases for plumbing & mechanical. Garage main door location, if applicable, may vary subject to grade. In an ongoing review of homeowner's needs, changes may have been incorporated into our "New Home Features" and construction techniques. Specifications subject to change without notice. Manufacturers' images are shown and may differ from the final product. E. & O.E. June 2024.

