

Designer Finished Homes

SUITE 212

MODEL 15 | 1,204 SQ. FT. | 2 BEDS + DEN | 2 BATHS

THE
SPENCER
AT GREYSTONE



Artist's concept. E.&O.E.

EQ HOMES



THE
SPENCER
 AT GREYSTONE

WELCOME TO THE SPENCER AT
GREYSTONE VILLAGE

MODERN,
 ICONIC,
THE SPENCER

Re-imagine Condominium Living

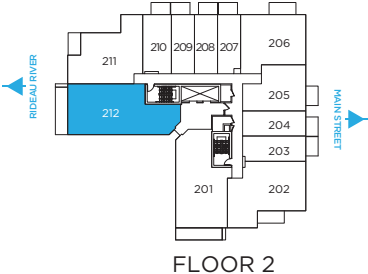
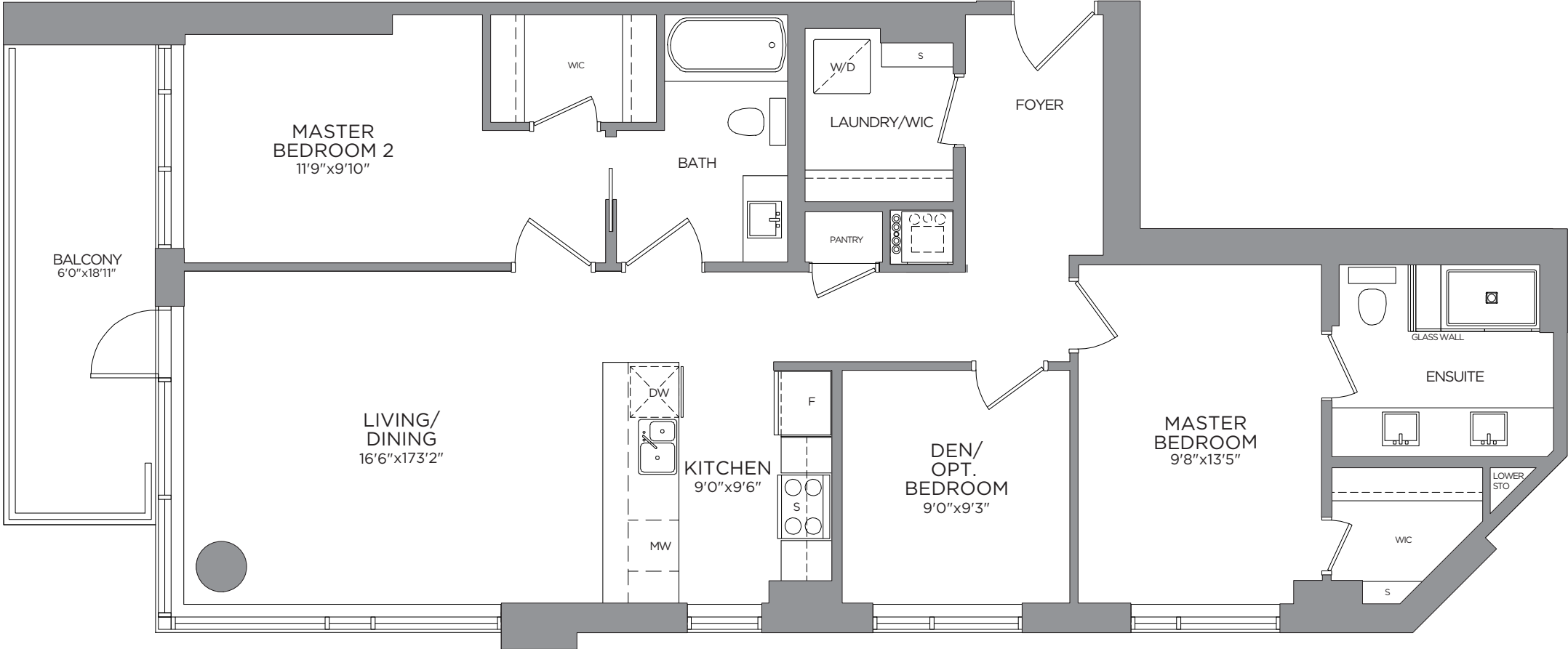


Designer Finished Homes

SUITE 212

MODEL 15 | 1,204 SQ. FT. | 2 BEDS + DEN | 2 BATHS

THE
SPENCER
AT GREYSTONE

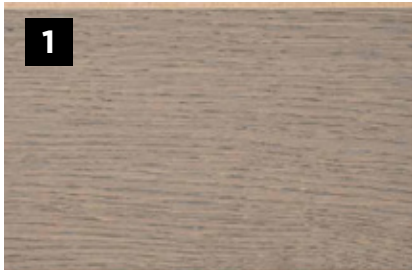


Prices, dimensions and specifications are subject to change without notice. All renderings are artist's concept. E. & O.E. April 2024.

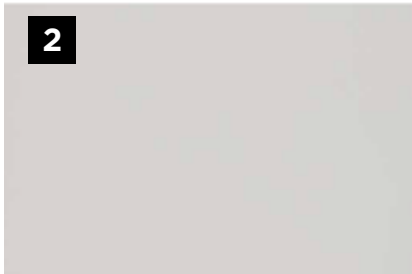
FEATURES & FINISHES

B2: CLASSIC WHITE

WHOLE HOUSE



1



2

KITCHEN



3

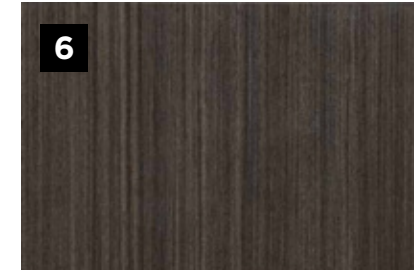


4

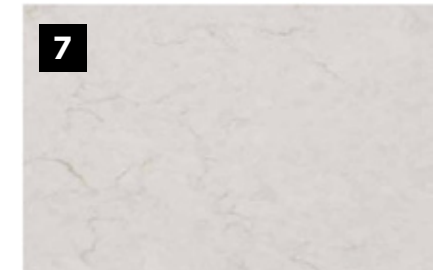


5

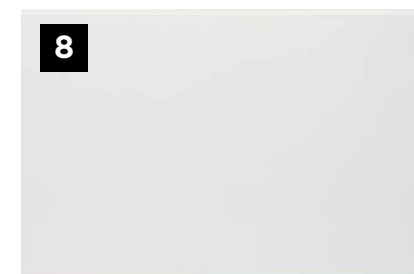
BATHROOM



6



7



8



9

E.&O.E.

1

FLOORING
Pebble Oak
Engineered
Hardwood

2

PAINT
Repose Grey

3

BACKSPLASH
Artisan
White

4

COUNTERTOP
Strato
Quartz

5

CABINET
White
Shaker

6

CABINET
Spring
Blossom

7

COUNTERTOP
Snowy Ibiza
Quartz

8

WALL TILE
White Gloss

9

FLOOR TILE
Nexus Mica

APPLIANCES

ENJOY THE EASE AND LUXURY OF LIFE WITH THE HELP OF **MODERN APPLIANCES**



E.&O.E.

1

FRIDGE
30" Blomberg
Fridge

2

MICROWAVE
Panasonic
Built-In

3

HOOD FAN
Faber
Hood Fan

4

DISHWASHER
24" Blomberg
Tall Tub
Panel Ready
Dishwasher

5

OVEN
30" Blomberg
Slide-In
Electric
Range

6

WASHER
24" Samsung
Washing
Machine

7

DRYER
24" Samsung
Dryer

THE
SPENCER
AT GREYSTONE

Contact your **Spencer Sales Consultant**
to book an appointment.



CLAUDIA WARNER-JACOBS
New Home Sales Consultant
TEL: 613-569-3043
EMAIL: CWarnerJacobs@eqhomes.ca

THE SPENCER SALES OFFICE:
223 Hazel St, Ottawa, ON K1S 1C4

All drawings are artist's concept and may vary slightly from the final product. Actual usable floorspace may vary from stated area, and square footage has been calculated based on usable living space according to the TARION rules and does not include garage or unfurnished basement areas. Drawings may show optional features which may not be included in the base price. Bulkheads & box outs may be required as chases for plumbing & mechanical. Garage main door location, if applicable, may vary subject to grade. In an ongoing review of homeowner's needs, changes may have been incorporated into our "New Home Features" and construction techniques. Specifications subject to change without notice. Manufacturers' images are shown and may differ from the final product. E. & O.E. April 2024.

