



Designer Finished Homes

THE ALEXANDER

WITH SUNROOM

LOT 4-19 | 1,848 SQ. FT.

eQuinelle





ELEVATION D

Artist's concept. E.&O.E.

DESIGNER FINISHED HOME

A Designer Finished Home means it's a quick move-in that includes show-stopping features and finishes expertly selected for their timeless beauty. Our award-winning design team hand selected all of the features and finishes boasting a harmonious blend of the finest interior appointments.

MEET THE DESIGNER BEHIND THE HOME



LINDSAY PASCH
eQ Design Consultant



My vision for this home was “contemporary opulence.”

The bright, natural, textured wide plank hardwood floor gives the home a contemporary feel, while the 24x24 dark marble-look tile at the entry adds contrast and elegance.

I chose a dark grey painted finish for the cabinets, with natural cherry floating shelves and hood fan trim to add warmth.

The overall feeling is warm and fresh with some natural elements to bring a sense of nature into the home.





Designer Finished Homes

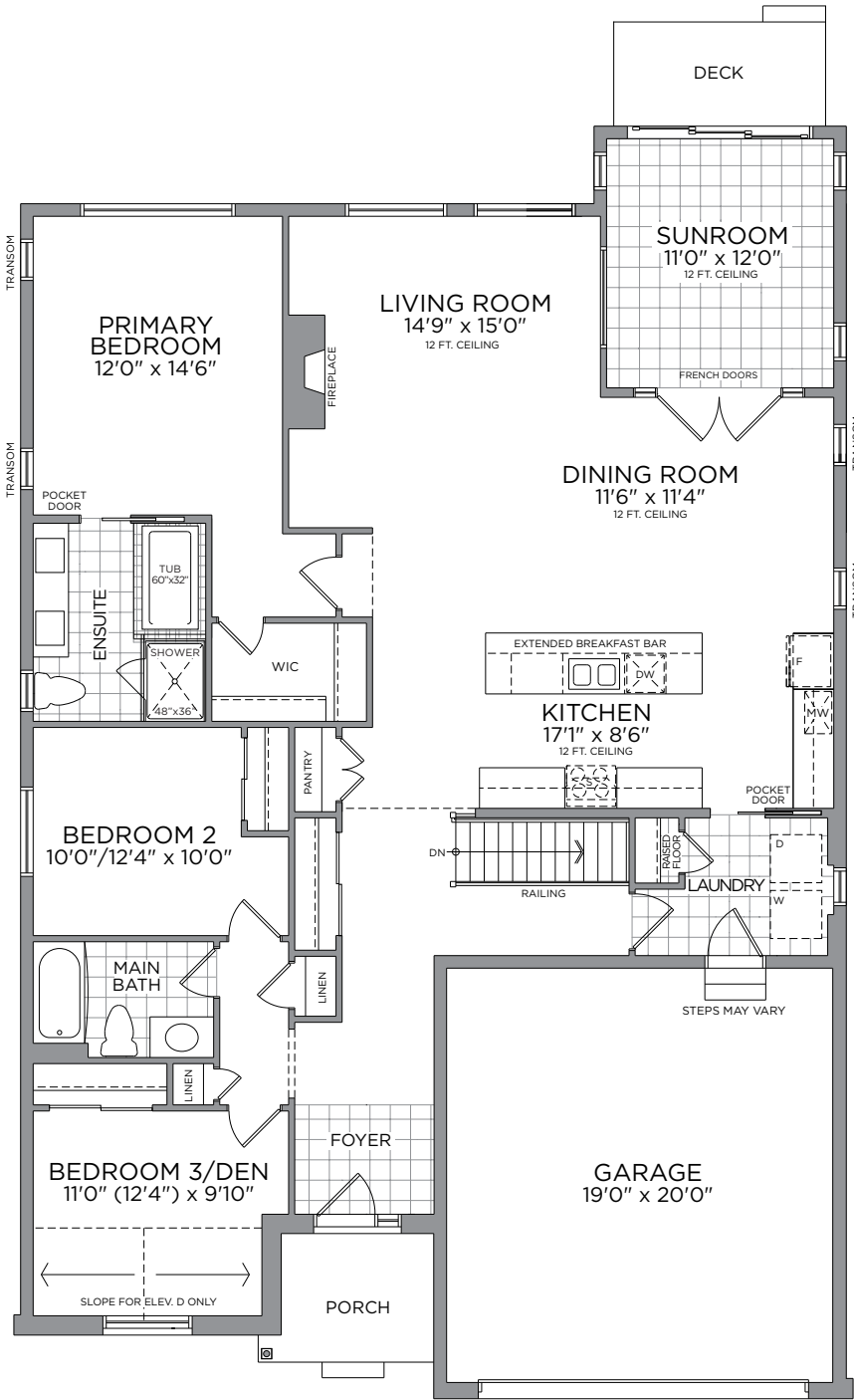
THE ALEXANDER

WITH SUNROOM

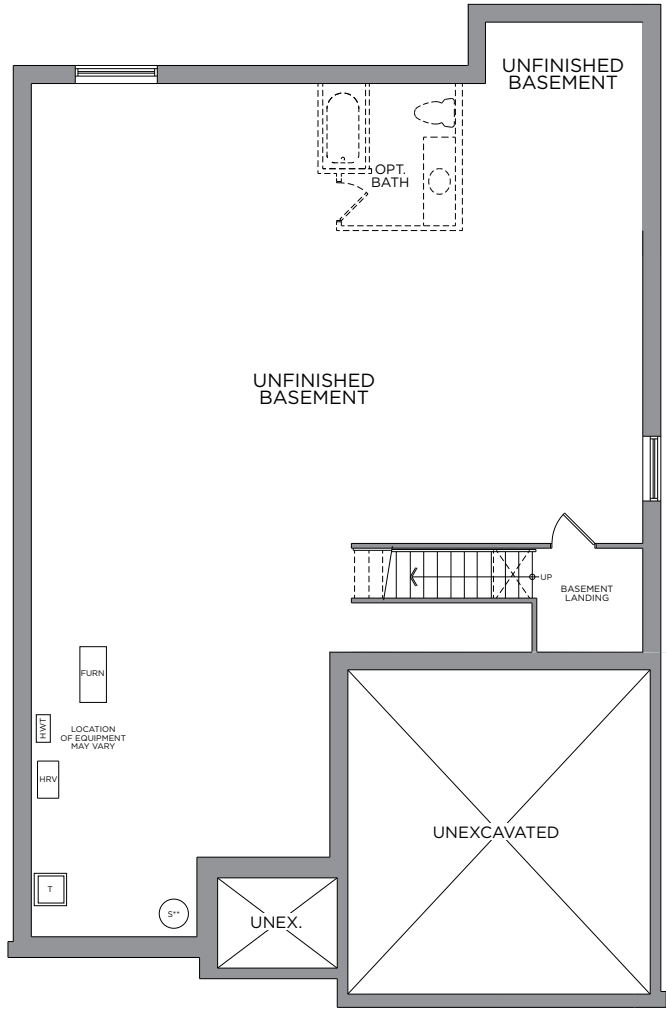
1,848 SQ. FT | LOT 4-19



All drawings are artist's concept and may vary slightly from the final product. Actual usable floorspace may vary from stated area, and square footage has been calculated based on usable living space according to the TARIION rules and does not include garage or unfurnished basement areas. Drawings may show optional features which may not be included in the base price. Bulkheads & box outs may be required as chases for plumbing & mechanical. Garage main door location, if applicable, may vary subject to grade. Specifications subject to change without notice. Manufacturers' images are shown and may differ from the final product. E. & O.E. May 2023.



GROUND FLOOR



BASEMENT



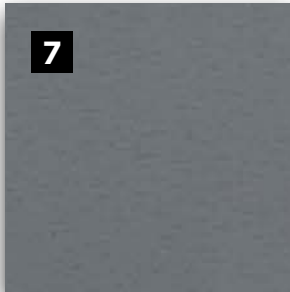
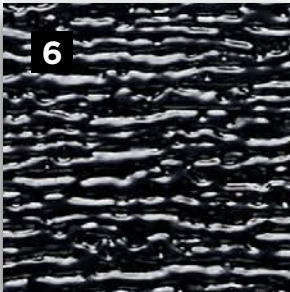
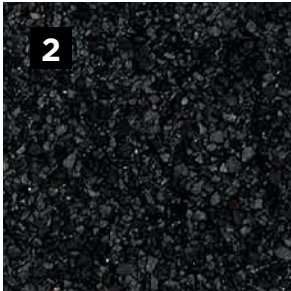
OUR COMMUNITY



THE COMMUNITY SITE PLAN



The Alexander boasts the finest features and finishes, coupled with the most exquisite craftsmanship. From the 12' ceilings on the main floor to the richly grained white oak flooring to the Napoleon gas fireplace, every premium appointment adds elegance and value to your home. That includes the spectacular kitchen with its personalized cabinetry, quartz countertops, and stainless-steel double sink with a contemporary Moen faucet. The Alexander will enrich your life in every detail.



E.&O.E.

1

MASONRY
Charcoal -
Vivace

2

ROOF
SHINGLES
Dual Black

3

FRONT DOOR
ENTRY
Blackberry

4

MAIN VINYL
SIDING
Stratus

5

WINDOWS
Flagstone

6

GARAGE
DOOR
Flagstone

7

FASCIA / SOFFIT /
ALUMINUM TRIM
Flagstone

MAKE A GRAND ENTRANCE WITH AN
EXQUISITE DOOR HARDWARE,
FLOOR & TRIM PACKAGE

INTERIOR DETAILS



E.&O.E.

1
**MAIN ENTRY/
SUNROOM TILE**
24x24 Euro La Marca
- Nero Venato Honed

2
**MUD/LAUNDRY
ROOM TILE**
10x11 Ceretec
Starhex - Mica

3
**ENGINEERED HARDWOOD
FLOORING**
Lauzon Designer Collection
Estate White Oak 6-1/4" - Natural

4
CARPET
Beaulieu
Sultana Berber
- Democracy

5
INTERIOR PAINT
Benjamin Moore
OC-22 - Calm

6
**INTERIOR DOOR
HARDWARE**
Halifax Square Rose
Iron Black Levers

7
TRIM PACKAGE
Baseboard 2190A,
Casing 2189A,
Shoe Mould 1997A

8
**INTERIOR
DOORS**
Conmore
5-Panel

THE FIREPLACE CENTREPIECE
ADDS WARMTH AND AMBIENCE
TO YOUR HOME

FIREPLACE

1



2



E.&O.E.

1

FIREPLACE INSERT
Napoleon Ascent 36

2

RAILING DETAILS
Railing Package #14 (Oak)



KITCHEN CABINET & ISLAND LAYOUT

E.&O.E.



E.&O.E.

- | | | | | | | | |
|--|---|--|---|---|--|---|---|
| 1
HOOD FAN
Cyclone BX21228
Stainless Steel
Insert hood fan | 2
KITCHEN SINK
Bristol B1807 Double
Bowl Undermount
SS Sink | 3
DOOR PULL
BP56325160-
900 | 4
KITCHEN FAUCET
Moen Genta
Kitchen Faucet -
7882BL | 5
BACKSPLASH
2.5x8 Centura
Artisan Gloss | 6
COUNTERTOP
Hanstone
Quartz-
Awaken | 7
CABINETRY
(MAIN)
Dusk | 8
CABINETRY
(FLOATING
SHELVES)
Cherry - Natural |
|--|---|--|---|---|--|---|---|

A SUMPTUOUS PRIMARY ENSUITE
YOUR COZY PRIVATE RETREAT

PRIMARY ENSUITE



ENSUITE LAYOUT

E.&O.E.

E.&O.E.

1	2	3	4	5	6	7	8	9	10	11
CABINETRY	COUNTERTOP	FLOORING	SHOWER FLOOR TILE	SHOWER TUB/WALL TILE	DOOR PULL	VANITY FAUCET	TUB FIXTURE	SHOWER FIXTURE	VANITY SINK	TOILET
Brookfield MDF - Soapstone	Hanstone Pewter Quartz	24x24 Euro La Marca - Polished - Onyx Nuvolato	Olympia Quebec Mosaics - Hex Offset - Matte black	12x24 Euro La Marca - Polished - 1/3 offset - Onyx Nuvolato	BP56325128- 900 - Black	Moen Align matte black - 6190BL	Moen Align matte black - T393BL	Moen Align matte black - T2192EPBL	Bristol - Rectangular Undermount - B606	Gerber Wicker Park

MAIN BATH



1
CABINETRY
Brookfield
MDF -
Alpine
White

2
COUNTERTOP
Hanstone
Quartz -
Bianco Canvas

3
FLOORING
10x11 Ceretec
Starhex - Mica

4
**SHOWER/TUB
WALL TILE**
4x16 essential
subway - 1/3
offset - Bianco

5
**VANITY
FAUCET**
Moen
Vichy 6710

6
**TUB/SHOWER
FIXTURE**
Moen Vichy
- T2663EP

7
VANITY SINK
American
Standard
Studio
Undermount

8
TOILET
Gerber Viper
Elongated
Ergo-Height

SLEEK APPLIANCES
THAT LOOK GOOD AND
PERFORM BETTER

APPLIANCES

1



2



3



4



5



E.&O.E.

1

REFRIGERATOR
LG - 36" Counter
Depth French
Door Fridge

2

DISHWASHER
LG - 24" Top
Control Dish
W/ 3rd Rack

3

GAS RANGE
LG - 30" Slide-In Gas
Range - Convection
And Air Fry

4

WASHER
LG - 5.2ft³
Front Load
Washer

5

DRYER
LG - 7.4ft³
Front Load
Elect Dryer



The eQ Homebuyer's Path

DESIGNER FINISHED SINGLES & TOWNS

Congratulations On Selecting Your New eQ Home!



Melissa Gauthier,
Director, Sales & Design

1

Sign Agreement of Purchase & Sale with your eQ Sales Representative.

Provide deposit cheques or complete EFT form *(if applicable)*

2

10-day rescission period starts. Review Agreement of Purchase & Sale with your Solicitor.

3

Provide Mortgage Pre-Approval from your lender.

4

Congratulations! Your new home purchase is now official and 10-day rescission period ends.

5

Receive access to your homeowner portal.

Your New Home Construction Starts



Peter Jury,
VP of Construction

1

Lot Walk.
Meet the builder.**

2

Receive a progress photo from Customer Care.

3

Roof is on and shingled. Customer Care to send progress photo.

4

Frame Walk with Customer Care and Construction Representative.**

5

Walk-through for blinds and window coverings measurements.**

6

Homeowner Orientation (PDI).** Customer Care will walk you through your new home.

7

Register online for MyHome at Tarion.com.

8

Submit AVID Construction Survey.

Welcome Home!



Francesca Jacobs,
Customer Care Manager

1

Occupancy starts.

2

Submit 30-day Tarion Warranty if necessary.***

3

Submit AVID Customer Satisfaction Survey (30 days after taking occupancy).

4

Closing day.

5

Election day turnover process begins.

6

Complete common elements performance audit survey.

7

Submit 1-year Tarion Warranty starts if necessary.***

8

Submit 2-year Tarion Warranty starts if necessary.***

9

3 to 7-year Tarion Warranty starts.***

Here's How
We Bring
You Home

This event may be in-person or virtual. If you have opted in to attend this appointment, an eQ Homes representative will contact you to confirm the details. *See your Tarion Warranty for details.



JAMES PATERSON
New Home Sales Consultant

74 Equinelle Drive, Kemptville, ON
(off County Road 44)
TEL: 613-258-6488
EMAIL: JPaterson@eqhomes.ca



All drawings are artist's concept and may vary slightly from the final product. Actual usable floorspace may vary from stated area, and square footage has been calculated based on usable living space according to the TARION rules and does not include garage or unfurnished basement areas. Drawings may show optional features which may not be included in the base price. Bulkheads & box outs may be required as chases for plumbing & mechanical. Garage main door location, if applicable, may vary subject to grade. In an ongoing review of homeowner's needs, changes may have been incorporated into our "New Home Features" and construction techniques. Specifications subject to change without notice. Manufacturers' images are shown and may differ from the final product. E. & O.E. May 2023.