



THE EVERITT

3/4 BEDROOM ~ 2,096/2,203 SQ. FT.
WITH 383 SQ. FT. FINISHED BASEMENT

**2-STOREY
TOWNS**



ELEVATION A

ARTIST'S CONCEPT

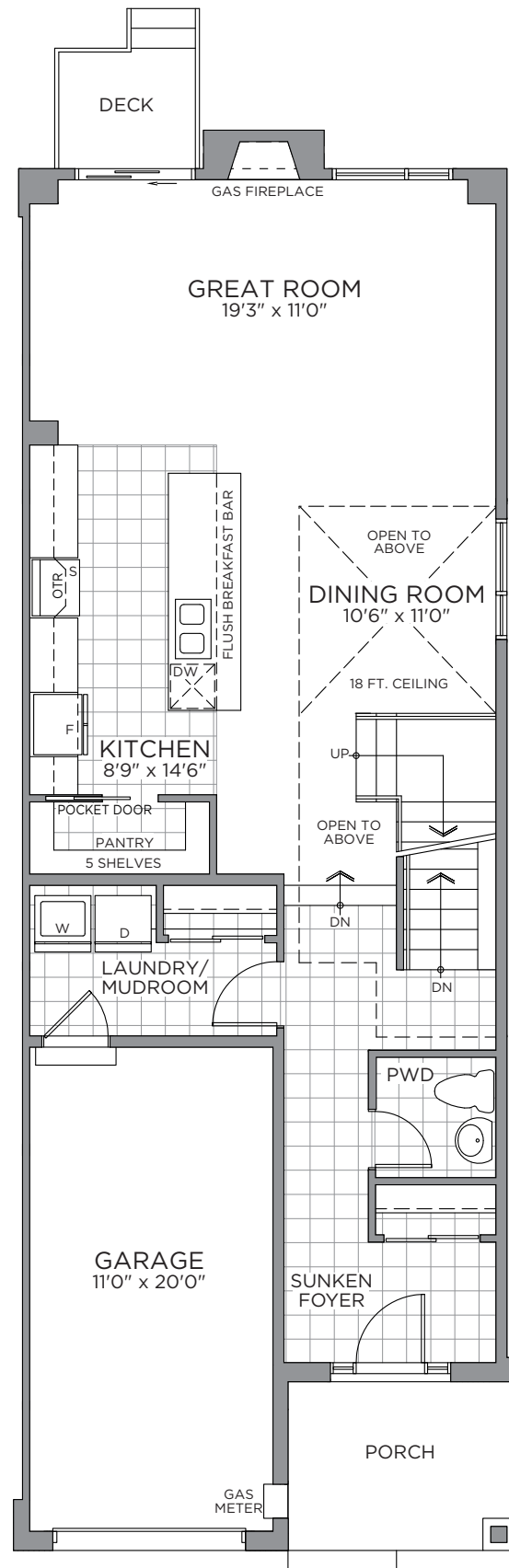
**2-STOREY
TOWNS**

THE EVERITT ~ 2,096/2,203 SQ. FT.

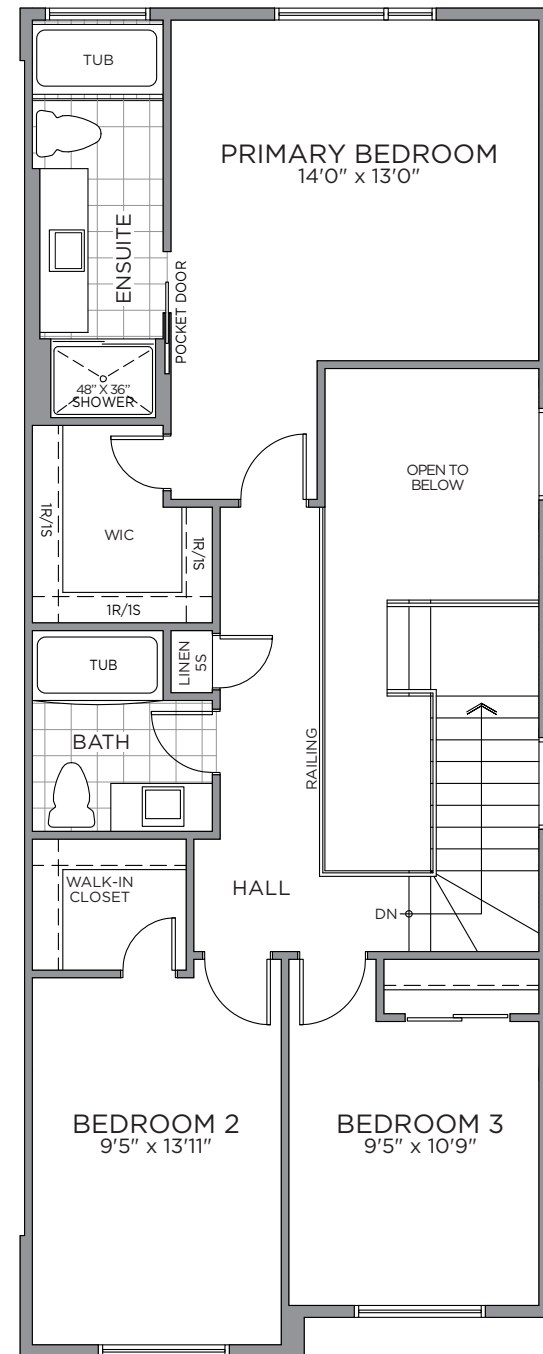
WITH 383 SQ. FT. FINISHED BASEMENT



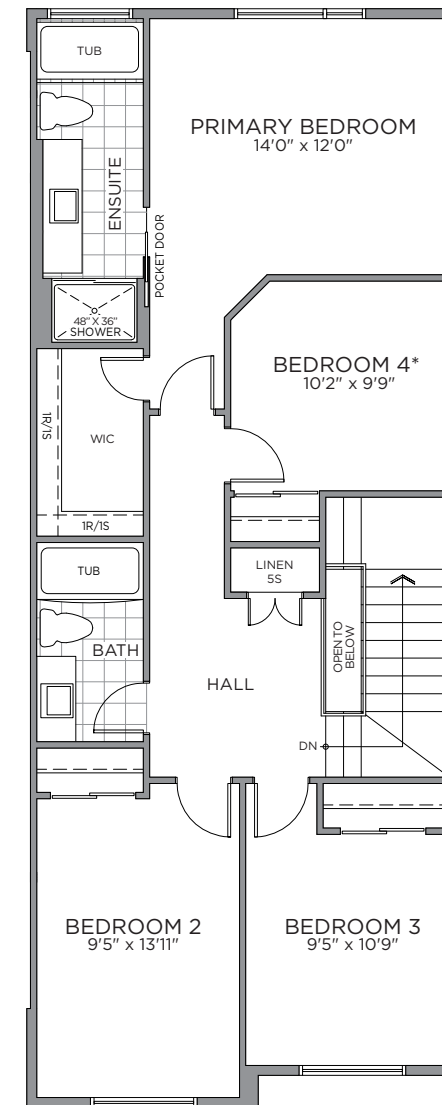
ELEVATION A



GROUND FLOOR

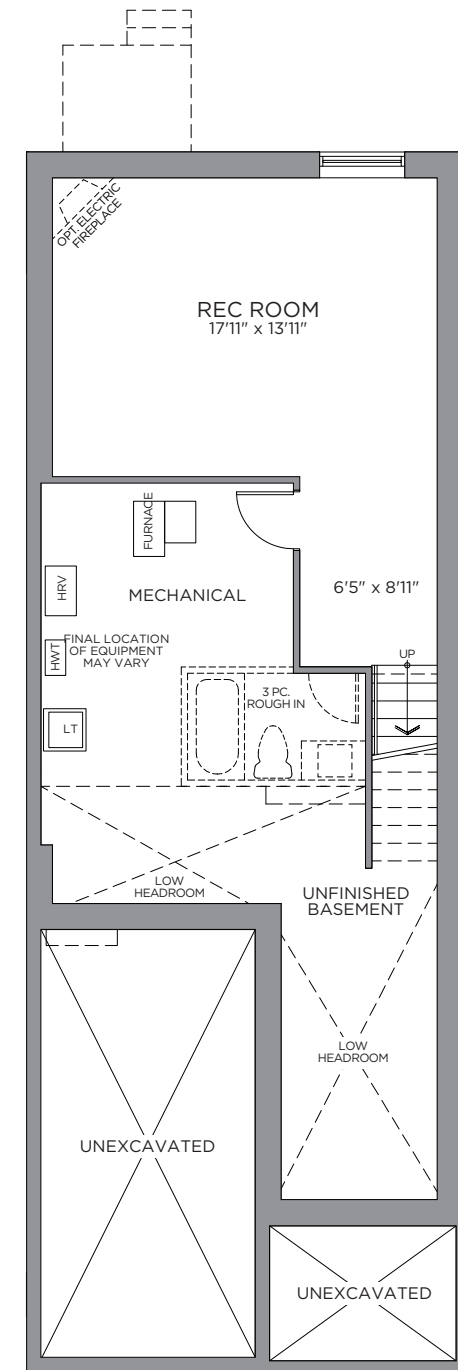


SECOND FLOOR



* When selecting "Optional Second Floor Plan" the dining room open to above is closed off for bedroom 4

OPTIONAL SECOND FLOOR
(4 BEDROOM PLAN)



FINISHED BASEMENT

*Front window and porch sizing/locations vary based on elevations, see agent for detailed drawings. ** Sump pump is for eQuinelle only. Prices, dimensions and specifications are subject to change without notice. All renderings are artist's concept. E. & O.E. December 2022

