



Designer Finished Homes

THE RUBY

2,228 SQ. FT. | T24-05

WALK-OUT LOT


CLARENCE
CROSSING


EQ
HOMES



The Ruby spans 2,228 sq. ft. with four large bedrooms and a convenient second floor laundry room. The beautifully-designed Kitchen has a family-sized walk-in pantry, and the separated Dining and Great Room are perfect for entertaining, all leading to a walkout through patio doors to the backyard. Upstairs, the spacious primary retreat includes spa-inspired ensuite where you can relax and unwind.

ELEVATION A



DESIGNER FINISHED HOME

A Designer Finished Home means it's a quick move-in that includes show-stopping features and finishes expertly selected for their timeless beauty. Our award-winning design team hand selected all of the features and finishes boasting a harmonious blend of the finest interior appointments.

MEET THE DESIGNER BEHIND THE HOME



SHANNON GRANGER
eQ Design Studio Manager

“With a hint of mid-century modern design inspiration, this home boasts beautiful natural hardwood flooring, a warm colour palette, touches of grey and modern black fixtures for a refined look and feel throughout.”



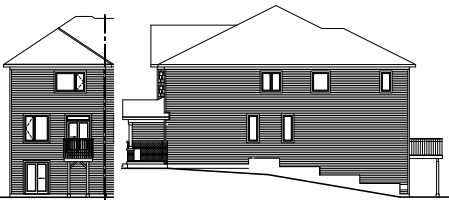


Designer Finished Homes

THE RUBY

2,228 SQ. FT. | T24-05

WALK-OUT LOT



BACK & SIDE ELEVATION

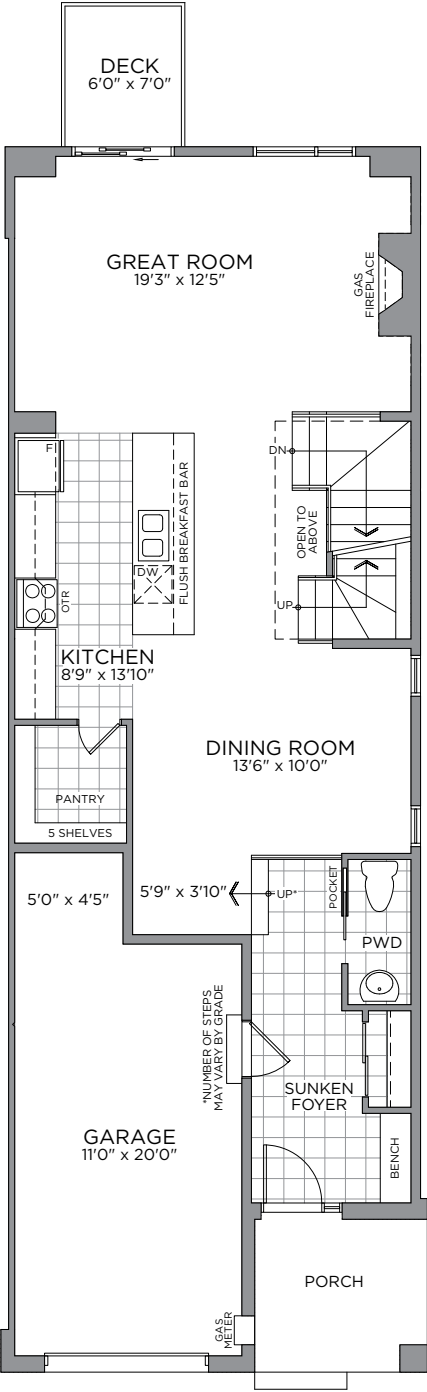
Artist's concept. E.&O.E.



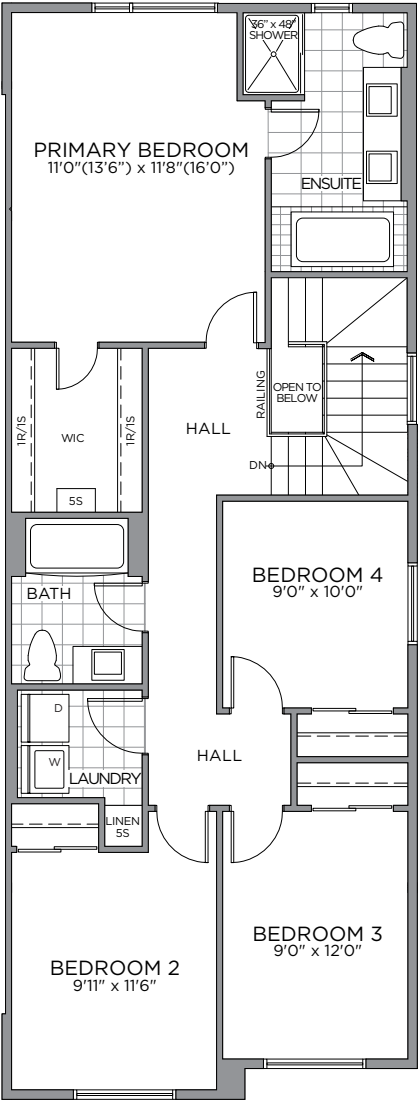
ELEVATION A

Artist's concept. E.&O.E.

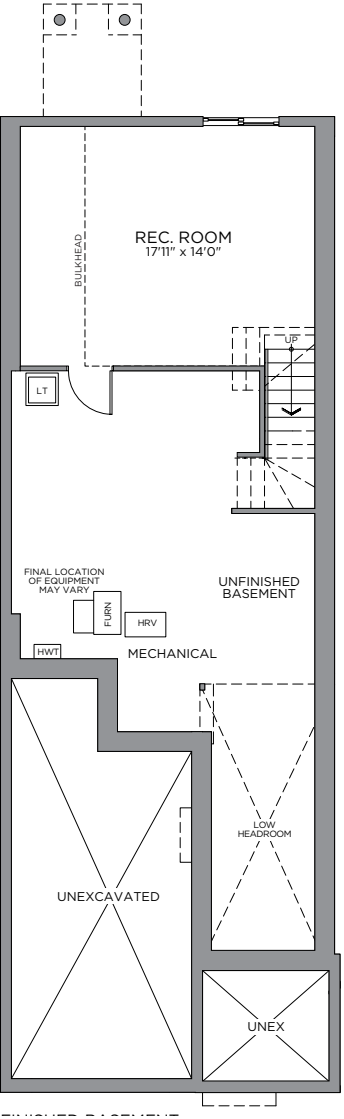
All drawings are artist's concept and may vary slightly from the final product. Actual usable floorspace may vary from stated area, and square footage has been calculated based on usable living space according to the TARION rules and does not include garage or unfurnished basement areas. Drawings may show optional features which may not be included in the base price. Bulkheads & box outs may be required as chases for plumbing & mechanical. Garage main door location, if applicable, may vary subject to grade. Specifications subject to change without notice. Manufacturers' images are shown and may differ from the final product. E. & O.E. March 2023.



GROUND FLOOR



SECOND FLOOR



BASEMENT



OUR COMMUNITY

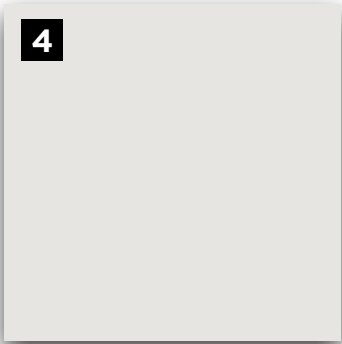


THE COMMUNITY SITE PLAN



MAKE A GRAND ENTRANCE WITH AN
EXQUISITE DOOR HARDWARE,
FLOOR & TRIM PACKAGE

INTERIOR DETAILS



E.&O.E.

1

**MAIN ENTRY
TILE**
12x24 Centura
Westside
- Almond

2

**THROUGHOUT HOME /
HARDWOOD FLOORING**
Lauzon Lodge Brushed
Ultra Matte Red Oak
3-1/8" x 3/4"- Austin

3

CARPET
STD Beaulieu
Coronet A4525
Minotaur Carpet
- Overcast

4

**INTERIOR
PAINT**
Benjamin
Moore OC-
22 - Calm

5

**INTERIOR DOOR
HARDWARE**
Weiser Westley
Satin Chrome Levers
- Satin Chrome

6

TRIM PACKAGE
Package #5
Baseboard 2828,
Casing L3513, Shoe
Mould 4075-9

7

**INTERIOR
DOORS**
Cambridge
2 Panel
Smooth

YOUR GUESTS WILL FIND YOUR
POWDER ROOM MOST WELCOMING

POWDER ROOM

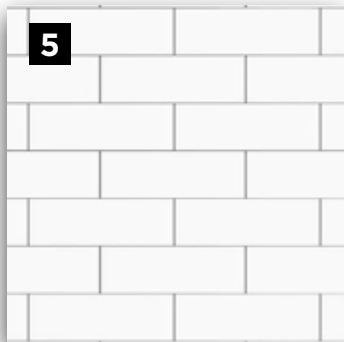
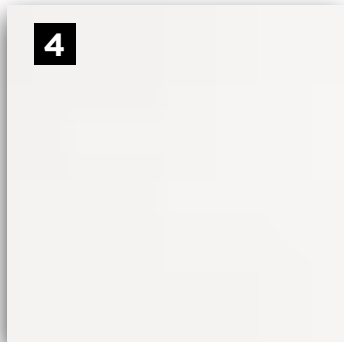
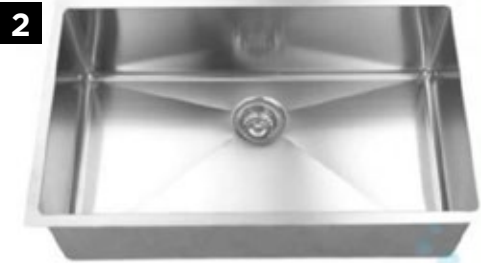
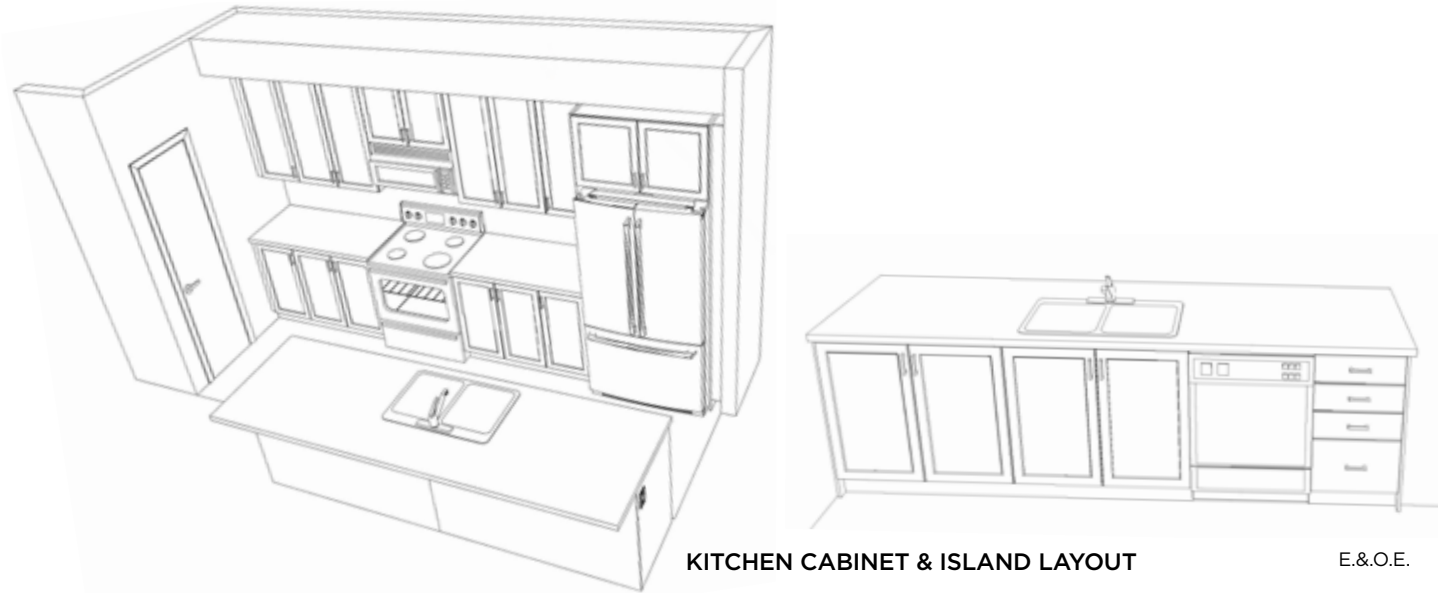


1
FLOORING
12x24 Centura
Westside -
Almond

2
VANITY FAUCET
Genta 6702 Chrome
1-Handle Bath
Faucet - Chrome

3
VANITY SINK
Boulevard
Pedestal Single
Hole - White

4
TOILET
Upg. ProFlo
- Jerritt 2pc
HE- White



E.&O.E.

1

CABINETRY
Level 2 -
Thermofoil
Preston -
Satin Cosmo

2

KITCHEN SINK
B1806 Single
Bowl Undermount
Stainless Steel
Sink

3

DOOR PULL
Std Hardware
4113-1BPN-P
- Brushed
Nickel

4

COUNTERTOP
Silestone
Group 1 - CTK-
SG1 - Miami
Vena

5

BACKSPLASH
3x6 Olympia
Essential
50/50 Offset
- Arctic White

6

KITCHEN FAUCET
Align Matte Black
1-Handle Pre-Rinse
Spring Pulldown -
Balck Matte

A SUMPTUOUS PRIMARY ENSUITE
YOUR COZY PRIVATE RETREAT

PRIMARY ENSUITE



ENSUITE LAYOUT

E.&O.E.

E.&O.E.

1

CABINETRY
Level 1 - Salem
Maple - Tuscan

2

COUNTERTOP
Silestone Group 1 -
CTK-SG1 - Miami White

3

FLOORING
13x13 Olympia
Construct - Dark Grey

4

TUB WALL TILE
8x8 Olympia Construct -
Vertically Stacked - Dark Grey

5

SHOWER WALL TILE
Ceratec 4x16 Essential Subway
Tile- Vertically Stacked - Bianco

6

DOOR PULL
Std Hardware 4113-1BPN-P
- Brush Nickel

7

VANITY FAUCET
Genta 6702BL 1-Handle
Bath Faucet - Black Matte

8

TUB FAUCET
Genta Moen Tub
Faucet - Black Matte

9

SHOWER FIXTURE
Genta Tub Shower Fix: BLACK
T2473EPBL+2520 - Black Matte

10

VANITY SINK
ProFlo
Undermount Sink

11

TOILET
ProFlo - Jerritt
2-pc. HE - White

12

SHOWER DOOR
Standard Maax
Kameleon Door



MAIN BATH LAYOUT

E.&O.E.

E.&O.E.

1	2	3	4	5	6	7	8	9
CABINETRY	COUNTERTOP	FLOORING	SHOWER/TUB WALL TILE	DOOR PULL	VANITY FAUCET	SHOWER FIXTURE	VANITY SINK	TOILET
Level 1 - Salem Maple - Tuscan	Silestone Group 1 - CTK-SG1 - Miami White	13x13 Centura Explorer - Milan	Ceratec 4x16 Essential Subway Tile - Vertically Stacked - Bianco	Std Hardware 4113-1BPN-P - Brush Nickel	Genta 6702 Chrome 1-Handle Bath Faucet - Chrome	Genta Tub Shower Fixture: Chrome T2473EP+2520 - Chrome	ProFlo Undermount Sink	ProFlo - Jerritt 2-pc. HE - White

ENJOY THE EASE AND LUXURY OF LIFE
WITH THE HELP OF **MODERN APPLIANCES**

APPLIANCES



1

WASHER
Whirlpool -
5.4 cu. ft. Top
Load Washer

2

DRYER
Whirlpool -
7.4 cu. ft. Top Load
Electric Dryer

3

HOODFAN
Base Package GE
Over-the-Range
Microwave

4

RANGE
LG - 30"
Electric Smooth
Top Range

5

DISHWASHER
LG - 24"
Built-In Front
Control

6

FRIDGE
LG - 36" Counter
Depth French
Door Fridge



The eQ Homebuyer's Path

DESIGNER FINISHED SINGLES & TOWNS

Congratulations On Selecting Your New eQ Home!



Melissa Gauthier,
Director, Sales & Design

1

Sign Agreement of
Purchase & Sale with your
eQ Sales Representative.

Provide deposit
cheques or complete
EFT form *(if applicable)*

2

10-day rescission period
starts. Review Agreement
of Purchase & Sale with
your Solicitor.

3

Provide Mortgage
Pre-Approval from
your lender.

4

Congratulations!
Your new home purchase
is now official and
10-day rescission
period ends.

5

Receive access to your
homeowner portal.

Your New Home Construction Starts



Peter Jury,
VP of Construction

1

Lot Walk.
Meet the builder.**

2

Receive a progress photo
from Customer Care.

3

Roof is on and shingled.
Customer Care to send
progress photo.

4

Frame Walk
with Customer
Care and Construction
Representative.**

5

Walk-through for blinds
and window coverings
measurements.**

6

Homeowner Orientation
(PDI).** Customer Care
will walk you through
your new home.

7

Register online
for MyHome at
Tarion.com.

8

Submit AVID
Construction Survey.

Welcome Home!



Francesca Jacobs,
Customer Care Manager

1

Occupancy starts.

2

Submit 30-day Tarion
Warranty if necessary.***

3

Submit AVID Customer
Satisfaction Survey
(30 days after taking
occupancy).

4

Closing day.

5

Election day turnover
process begins.

6

Complete common
elements performance
audit survey.

7

Submit 1-year Tarion
Warranty starts
if necessary.***

8

Submit 2-year Tarion
Warranty starts
if necessary.***

9

3 to 7-year Tarion
Warranty starts.***

Here's How
We Bring
You Home

This event may be in-person or virtual. If you have opted in to attend this appointment, an eQ Homes representative will contact you to confirm the details. *See your Tarion Warranty for details.



ALAIN LEGAULT
New Home Sales Consultant

235 L'etang Street,
Clarence-Rockland, ON K4K 0K1
TEL: 613-682-0167
EMAIL: alegault@eqhomes.ca



All drawings are artist's concept and may vary slightly from the final product. Actual usable floorspace may vary from stated area, and square footage has been calculated based on usable living space according to the TARION rules and does not include garage or unfurnished basement areas. Drawings may show optional features which may not be included in the base price. Bulkheads & box outs may be required as chases for plumbing & mechanical. Garage main door location, if applicable, may vary subject to grade. In an ongoing review of homeowner's needs, changes may have been incorporated into our "New Home Features" and construction techniques. Specifications subject to change without notice. Manufacturers' images are shown and may differ from the final product. E. & O.E. March 2023.