



CLARENCE

CROSSING

The Alexander

1,848 Sq.ft.

3 Bedroom Bungalow

Fully Furnished Home

Ready For Move-In

Fall 2022

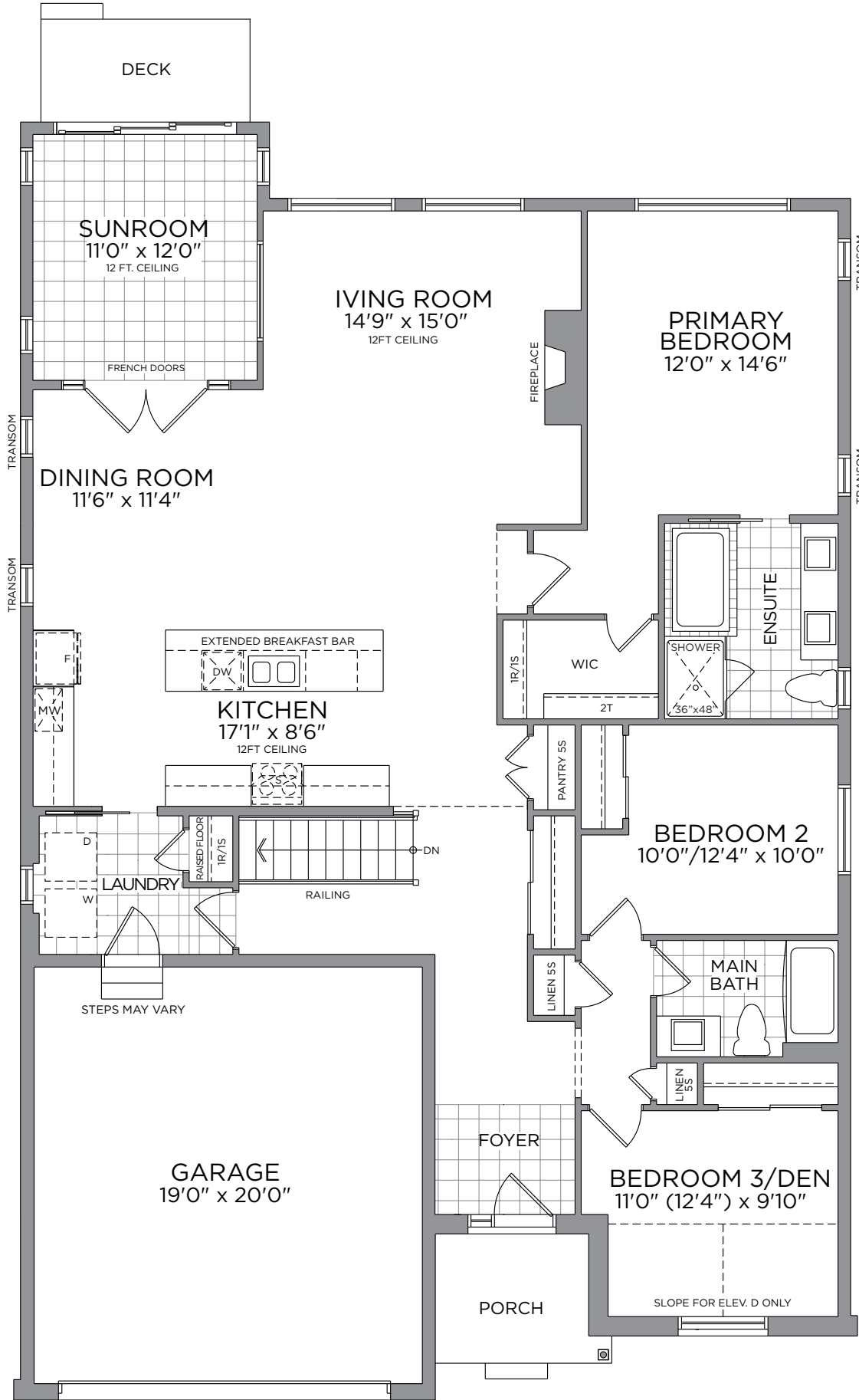


50'

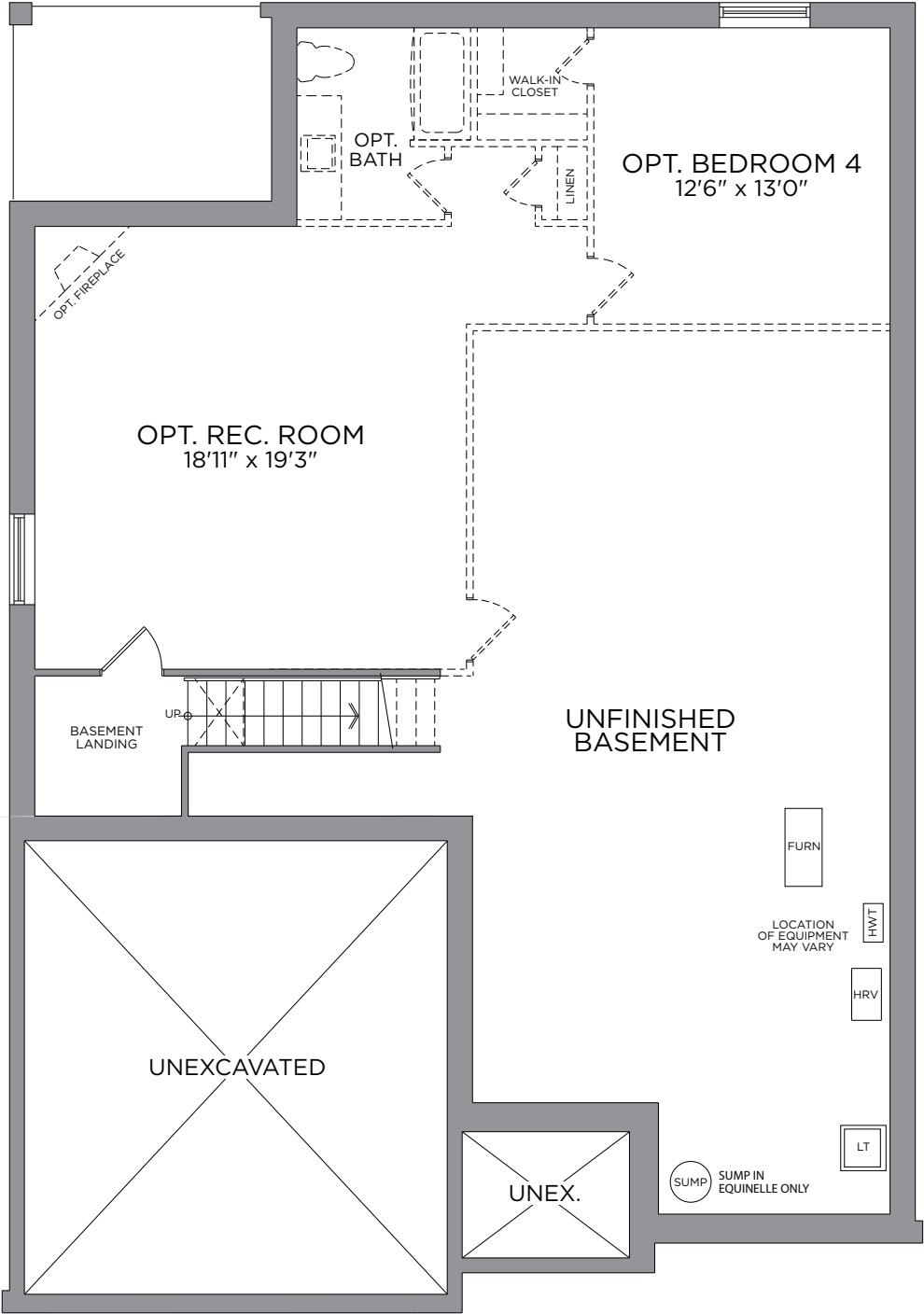
THE ALEXANDER ~ 1,848 SQ. FT.

WITH OPTIONAL FINISHED BASEMENT ~ 2,486 SQ. FT.

BUNGALOW SINGLES



GROUND FLOOR
ELEV. B & D



BASEMENT
OPT. FINISHED BASEMENT
786 SQ. FT.

*Front window and porch sizing/locations vary based on elevations, see agent for detailed drawings. ** Sump pump is for eQuinelle only. Prices, dimensions and specifications are subject to change without notice. All renderings are artist's concept. E. & O.E. January 1, 2022







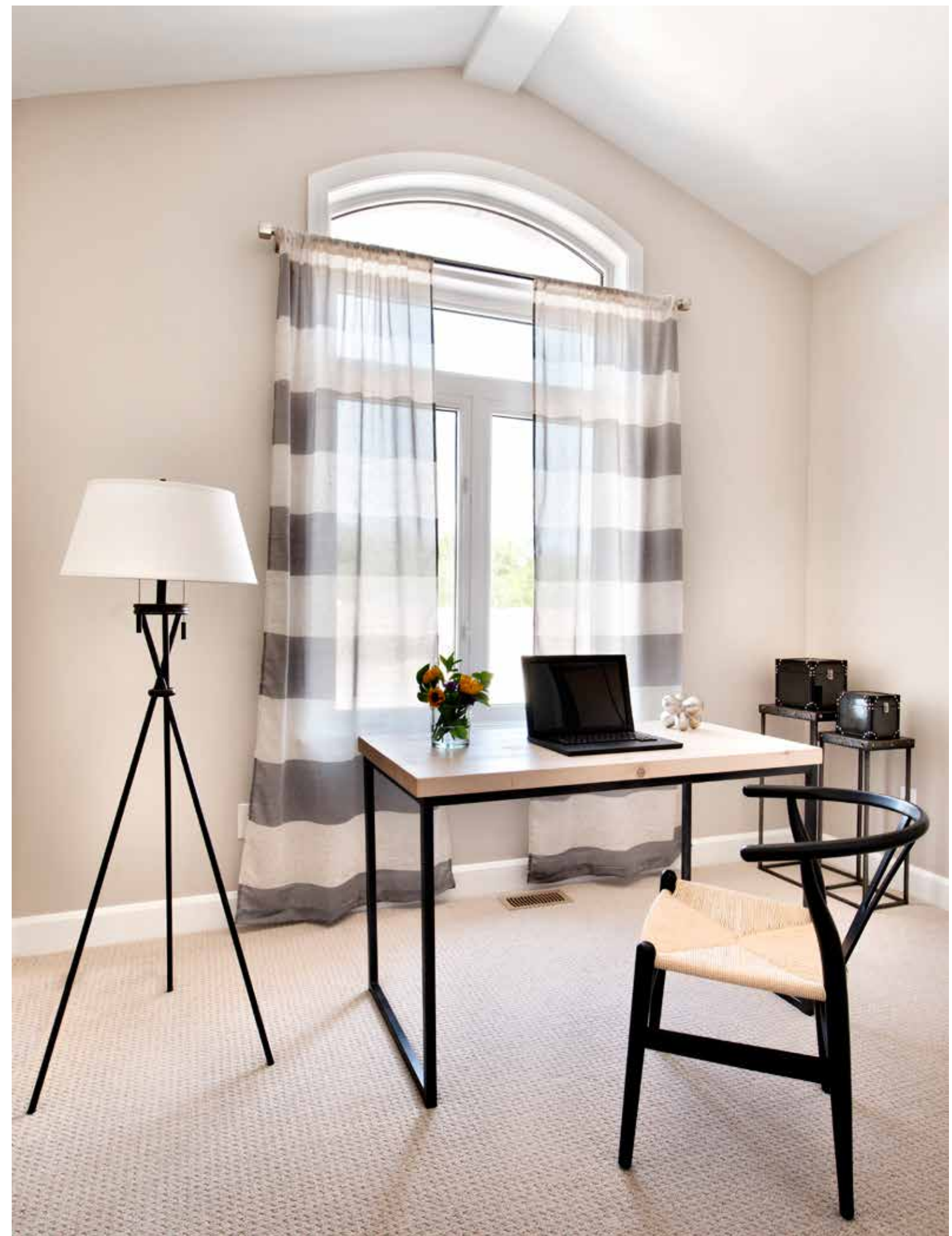






















**If you are interested in
purchasing this home, contact:**

Alain Legault

New Home Sales Consultant

alegault@eqhomes.ca

613-862-0167

