

# THE KAI

3/4 BEDROOM ~ 1,878 SQ. FT.

27'

2-STOREY SINGLES



# THE KAI

3/4 BEDROOM ~ 1,878 SQ. FT.

27'

2-STOREY SINGLES



ELEVATION M

ARTIST'S CONCEPT



ELEVATION B

ARTIST'S CONCEPT



27'  
2-STOREY SINGLES

# THE KAI ~ 1,878 SQ. FT.

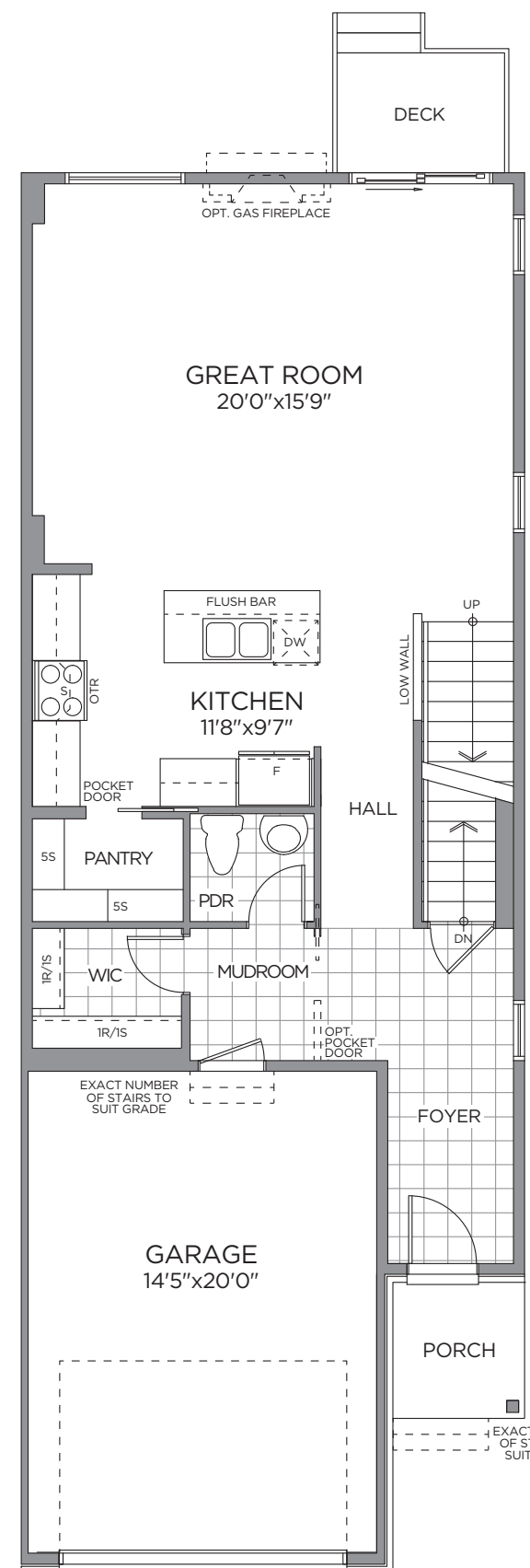
WITH OPTIONAL FINISHED BASEMENT REC. ROOM ~ 2,355 SQ. FT.  
WITH OPTIONAL FINISHED BASEMENT ~ 2,430 SQ. FT.



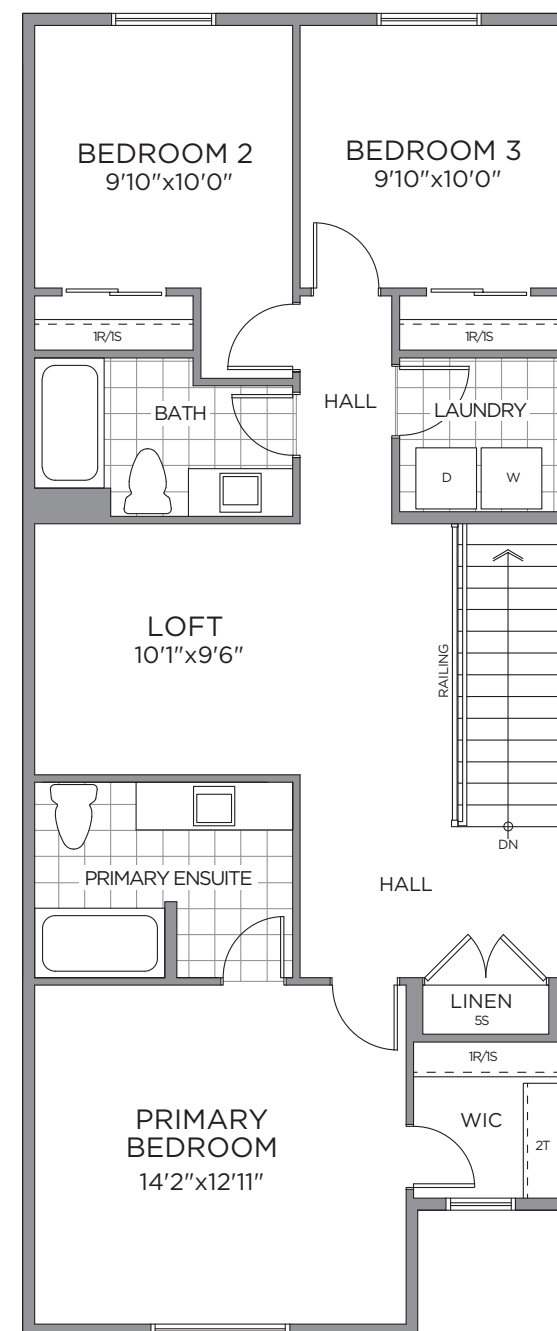
ELEVATION B



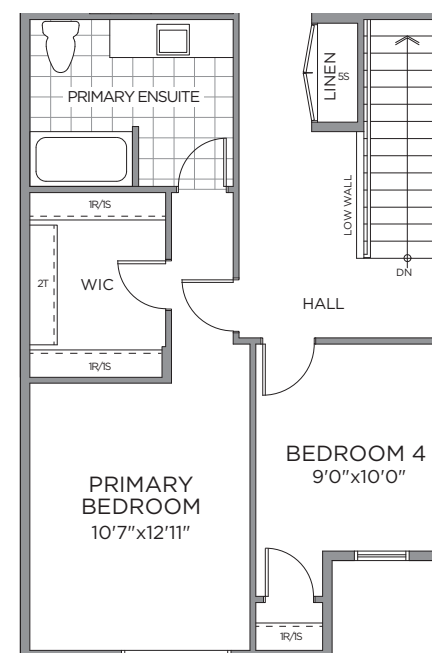
ELEVATION M



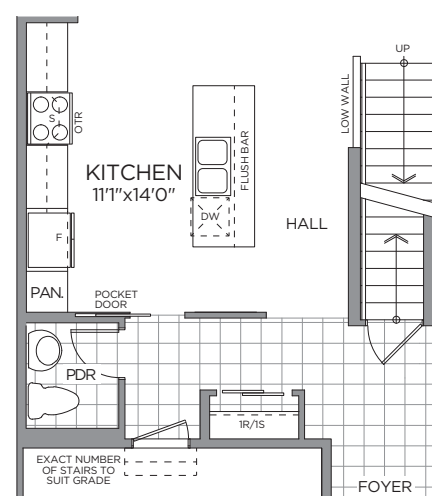
GROUND FLOOR



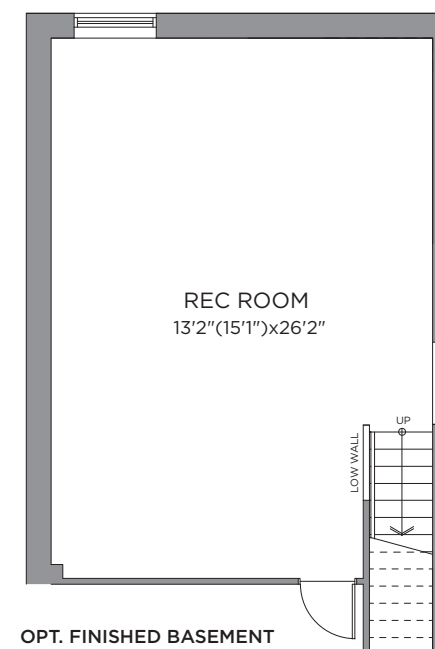
SECOND FLOOR



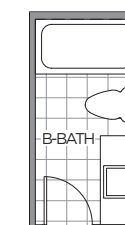
OPT. 4 BEDROOM  
SECOND FLOOR PLAN



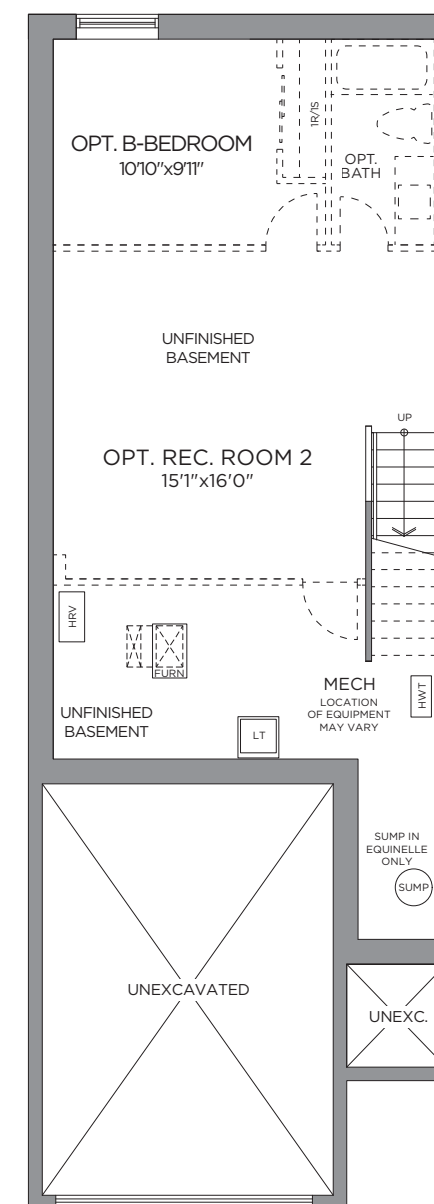
OPT. GROUND FLOOR PLAN



OPT. FINISHED BASEMENT  
REC. ROOM PLAN  
477 SQ. FT.



OPT. FINISHED BASEMENT  
BATHROOM  
75 SQ. FT.



STANDARD BASEMENT PLAN  
OPT. FINISHED BASEMENT PLAN  
552 SQ. FT.

Front window and porch sizing/locations vary based on elevations, see agent for detailed drawings. \*\* Sump pump is for eQuinelle on specific lots, see agents for details. Prices, dimensions and specifications are subject to change without notice. All renderings are artist's concept. E. & O.E. July 2025.

