



**THE HARPER**  
3 BEDROOM ~ 1,274 SQ. FT.

**MODERN  
TOWNS**



ELEVATION M

ARTIST'S CONCEPT

\*\*\*Bold square footage indicates finishes space in basement is included.

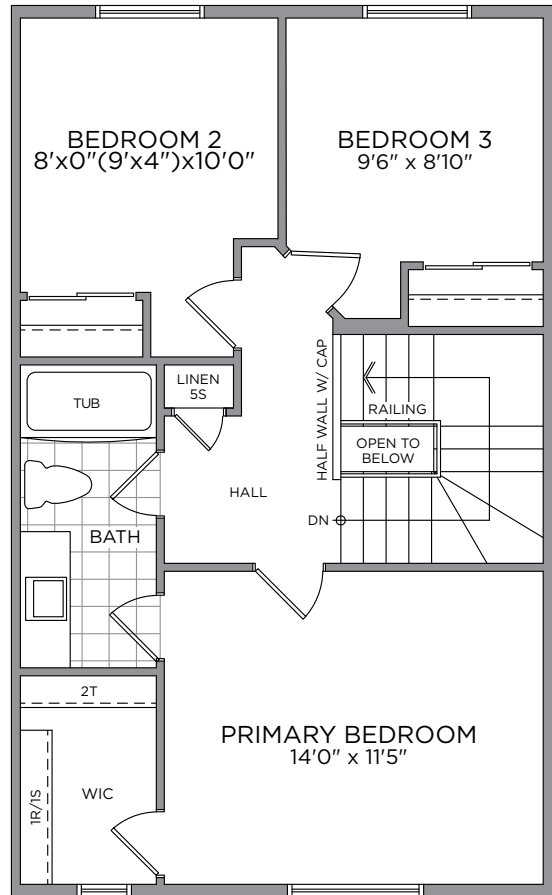
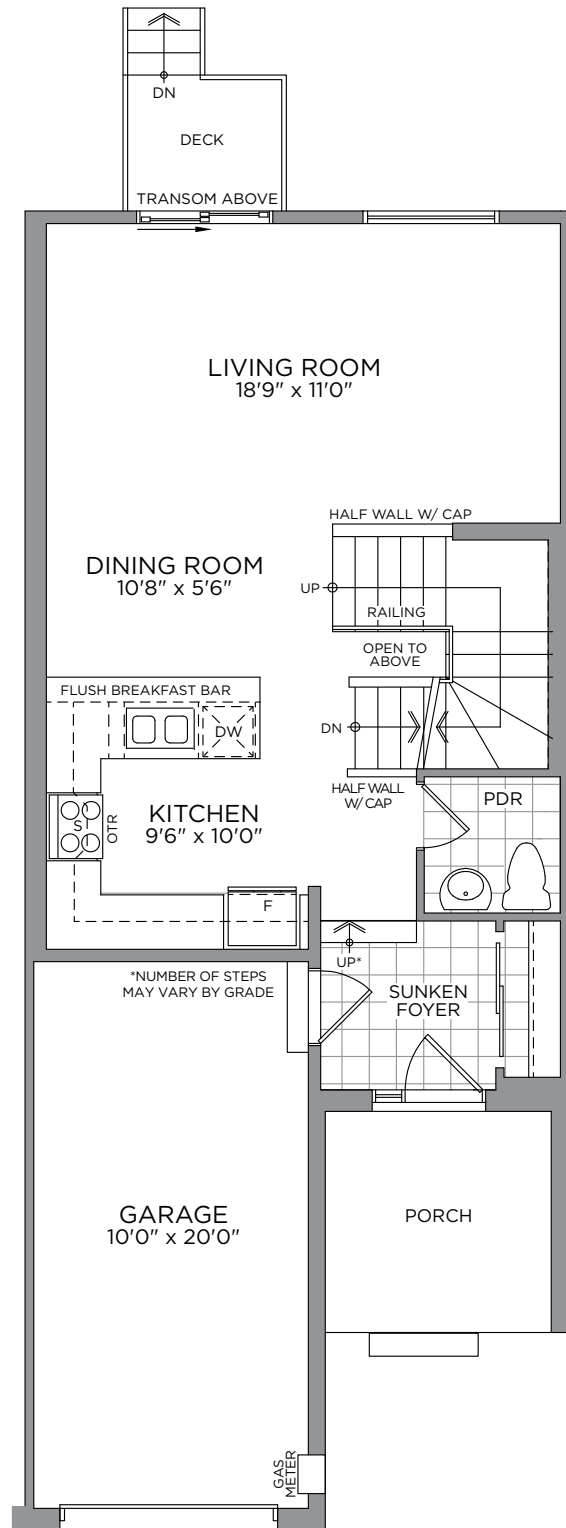
# MODERN TOWNS

## THE HARPER ~ 1,274 SQ. FT.

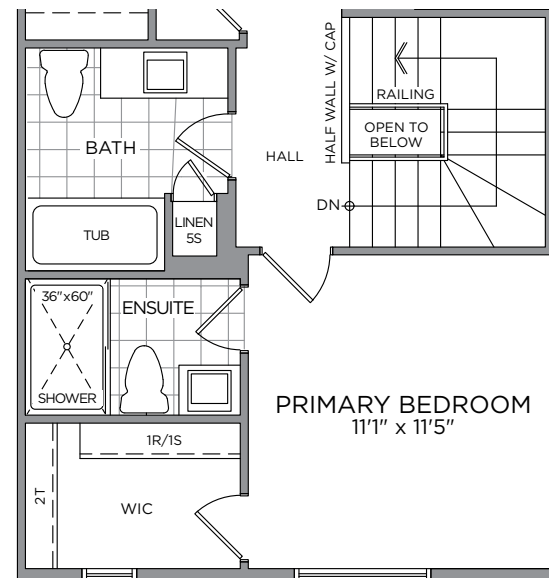
1,514 SQ. FT. with Optional Finished Basement Recreation Room  
 1,532 SQ. FT. with Optional Finished Basement Bedroom & Recreation Room 2



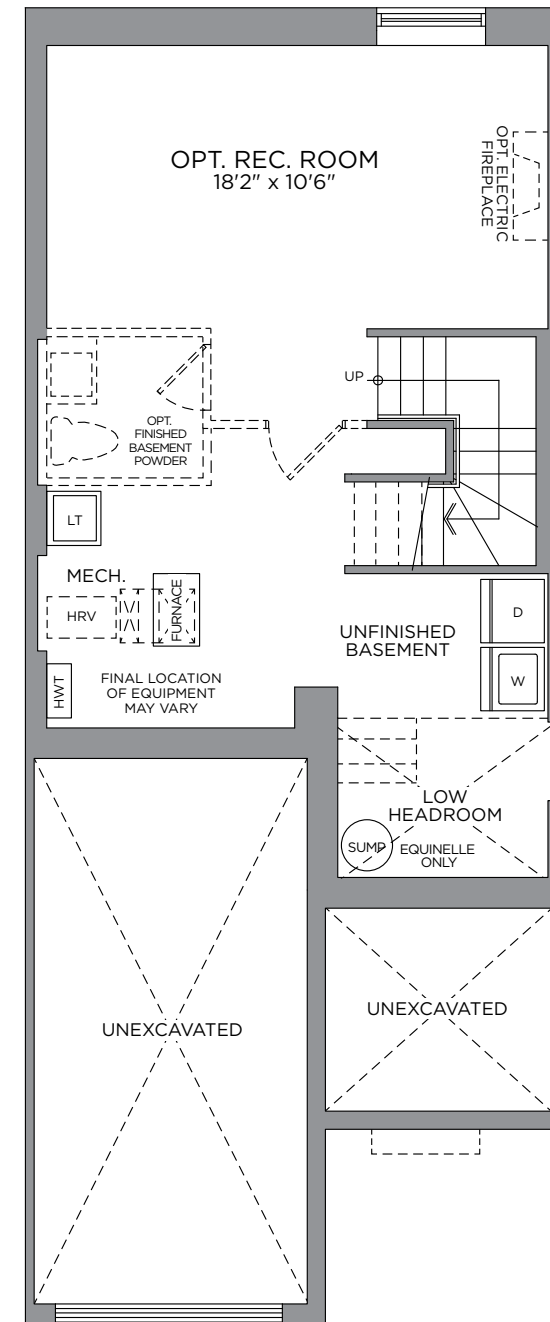
ELEVATION M



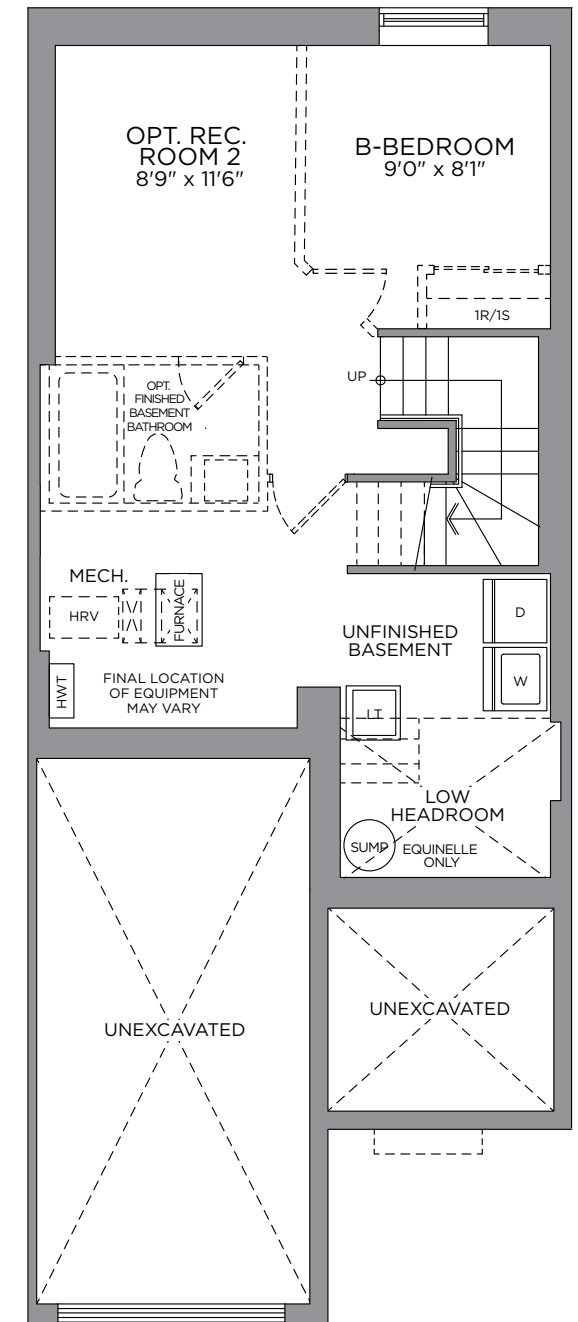
SECOND FLOOR



OPT. SECOND FLOOR



STANDARD BASEMENT  
 OPT. FINISHED BASEMENT REC. ROOM  
 263 SQ. FT.



STANDARD BASEMENT  
 OPT. FINISHED BASEMENT BEDROOM & REC. ROOM 2  
 281 SQ. FT.

\*Front window and porch sizing/locations vary based on elevations, see agent for detailed drawings. \*\* Sump pump is for eQuinelle only. Prices, dimensions and specifications are subject to change without notice. All renderings are artist's concept. E. & O.E. June 2023

