



Designer Finished Homes

THE SCARLET

3 BEDROOM ~ 1,945 SQ.FT.

T115-21



PROVENCE
ORLÉANS



The Scarlet is a modern two-storey townhome with large picture windows to a lush lookout. Spanning 1,945 sq.ft., this home features 3 large bedrooms and 2.5 bathrooms. The open concept kitchen with family-sized walk-in pantry gleams with white and chrome finishes. On the second floor, the primary bedroom boasts a luxurious ensuite and large walk-in closets and a convenient laundry room is just down the hall. Designed with rich chocolate hardwood and contrasting white accents throughout, the textured floor tile pulls it all together.



Artist's concept. E.&O.E.

DESIGNER FINISHED HOME

A Designer Finished Home means it's a quick move-in that includes show-stopping features and finishes expertly selected for their timeless beauty. Our award-winning design team hand selected all of the features and finishes boasting a harmonious blend of the finest interior appointments.

MEET THE DESIGNER BEHIND THE HOME



LINDSAY PASCH

“

Light and modern with traditional Calcutta marble tiles. White & Grey quartz with hints of gold adds a warm element.

”





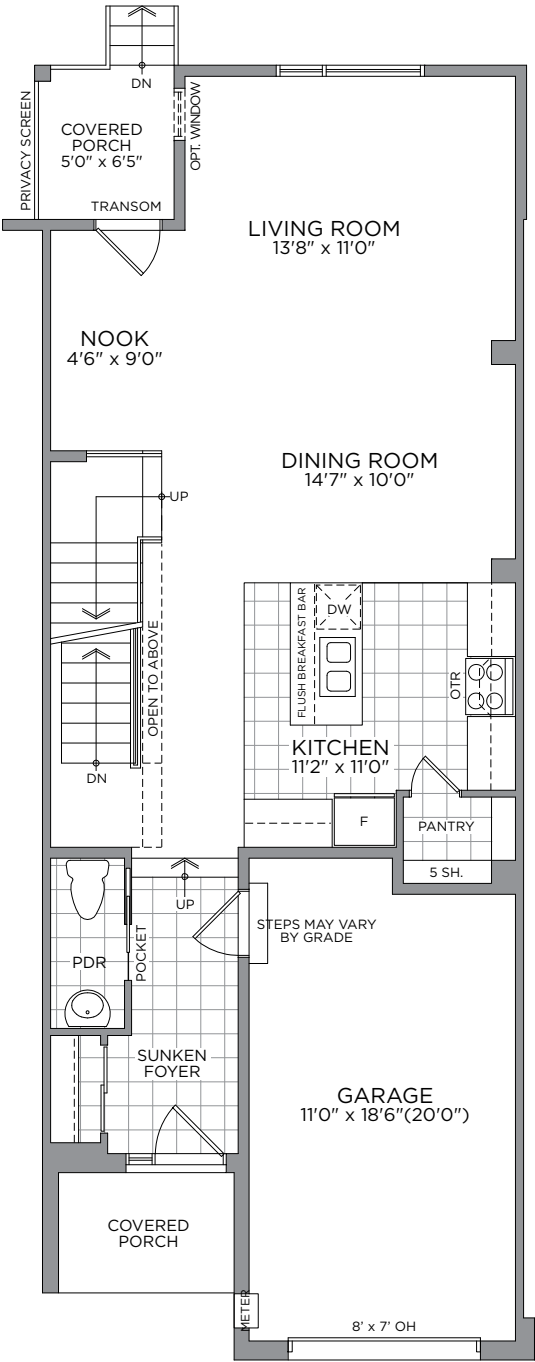
Designer Finished Homes

THE SCARLET

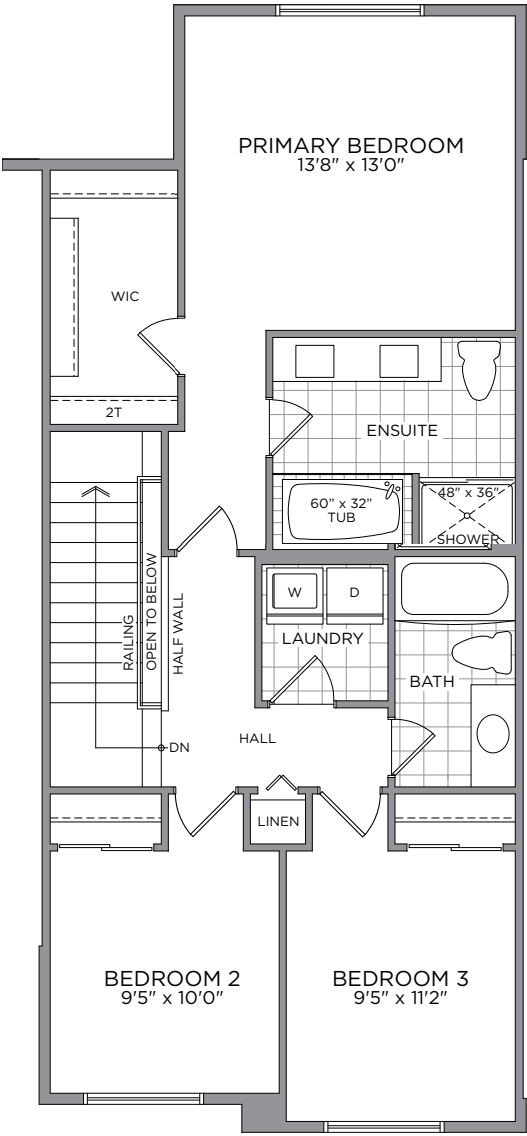
3 BEDROOM
1,945 SQ.FT.
T115-21



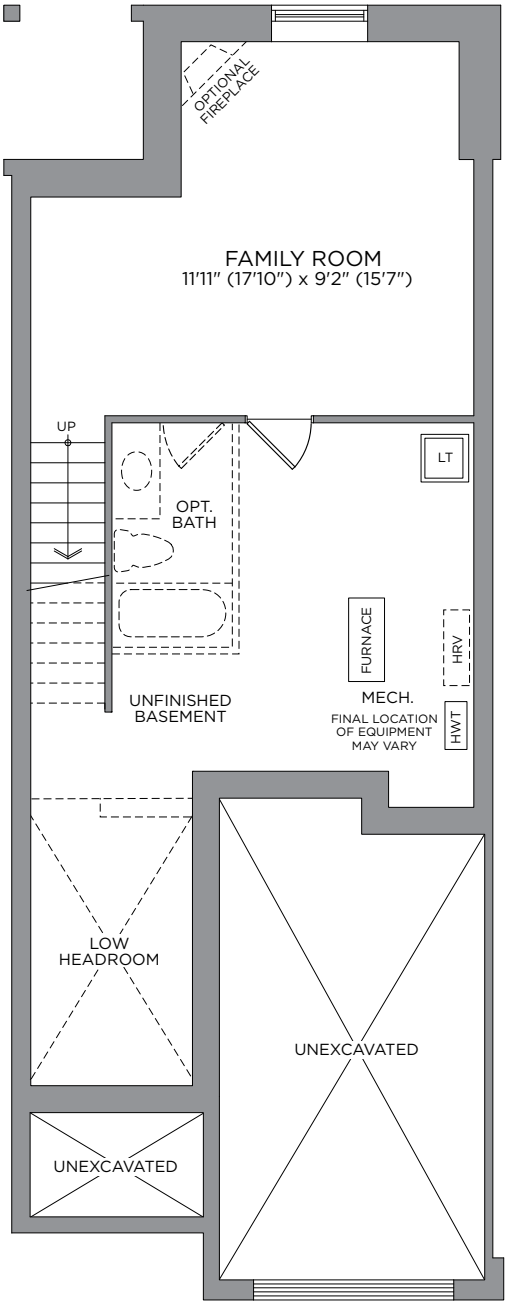
All drawings are artist's concept and may vary slightly from the final product. Actual usable floorspace may vary from stated area, and square footage has been calculated based on usable living space according to the TARION rules and does not include garage or unfurnished basement areas. Drawings may show optional features which may not be included in the base price. Bulkheads & box outs may be required as chases for plumbing & mechanical. Garage main door location, if applicable, may vary subject to grade. Specifications subject to change without notice. Manufacturers' images are shown and may differ from the final product. E. & O.E. October 2022.



GROUND FLOOR



SECOND FLOOR



BASEMENT



A
NEIGHBOURHOOD
IN THE CENTRE
OF IT ALL



THE COMMUNITY
SITE PLAN



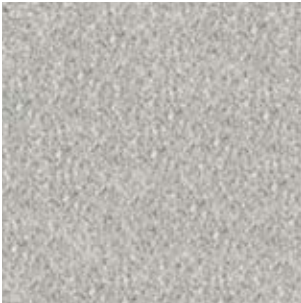
1



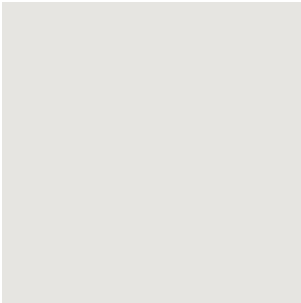
2



3



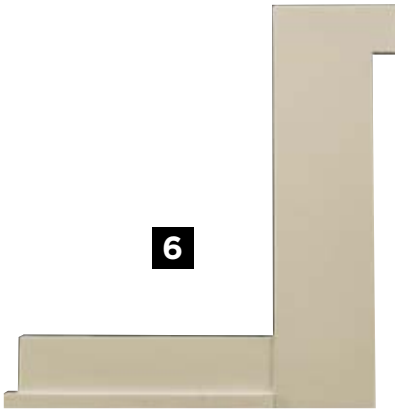
4



5



6



7



E.&O.E.

1

MAIN ENTRY TILE
Euro 12x24 Mayfair
Volkas Matte - 1/3
Offset - Grigio

2

HARDWOOD FLOORING
Lauzon Essential Expert
Collection Red Oak 4-1/8"
- Caliza

3

CARPET
Beaulieu
Coronet A4525
Minotaur Carpet

4

INTERIOR PAINT
Benjamin Moore
- OC22 Calm

5

INTERIOR DOOR HARDWARE
Weiser Ladera
Satin Nickel Levers

6

TRIM PACKAGE
Package #5 Baseboard
2828, Casing L3513,
ShoeMould 4075-9

7

INTERIOR DOORS
Cambridge
2-Panel Smooth

1



2



3



6



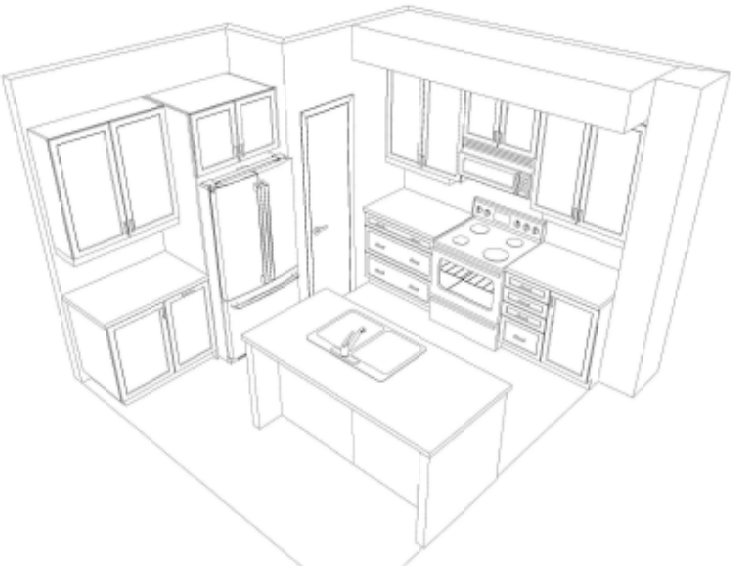
4



5

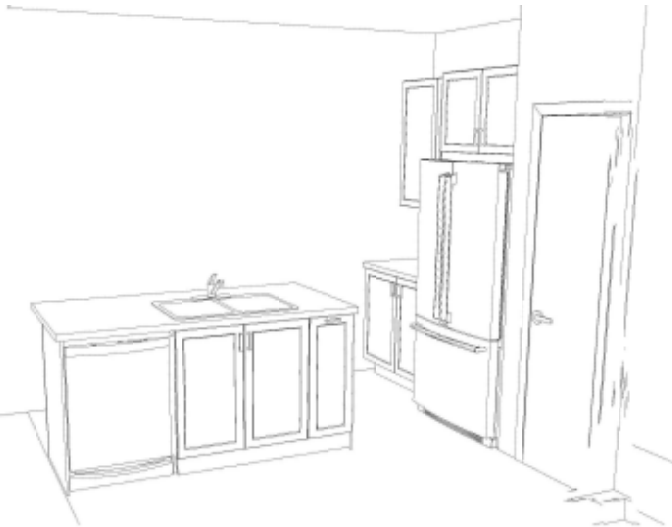


7



KITCHEN CABINET & ISLAND LAYOUT

E.&O.E.



1

CABINETRY
Preston Satin
Thermofoil -
Sleet

2

COUNTERTOP
Hanstone
Quartz - Strato

3

BACKSPLASH
Olympia 4x12
Picadilly - 1/3
Offset

4

DOOR PULL
4113-1BPN-P
Handles

5

KITCHEN FAUCET
Moen Align
7565Srs Single
Hole Pull-Down

6

HOOD FAN
Ge Jvm2165smss
Microwave
Hoodfan

7

KITCHEN SINK
Bristol B1807
Double Bowl
Undermount SS Sink

A SUMPTUOUS PRIMARY ENSUITE
YOUR COZY PRIVATE RETREAT

ENSUITE



1	2	3	4	5	6	7	8	9	10	11
CABINETRY	COUNTERTOP	FLOORING	SHOWER/TUB	DOOR	ENSUITE	VANITY	SHOWER	TUB FIXTURE	VANITY	TOILET
Contempra	Hanstone	Euro 12x24	WALL TILE	PULL	SHOWER	SINK	FIXTURE	Moen Kyvos	FAUCET	Standard
Horizontal	Quartz -	Mayfair Volkas	Euro 12X24	4113-1BPN-P	FLOOR	Bristol B606	Moen Kyvos	Chrome	Moen	Gerber
Grain	Angora	- matte - 1/3	Mayfair Volkas	Handles	Prefinished	Undermount	Chrome Posi-	1-Handle w/	Kyvos	Maxwell
Melamine -		Offset - Grigio	- Polished - 1/3		White		Temp Shower	Hand Shower	Chrome	Toilet
Catamaran			Offset - Grigio		Base				1-Handle	



1	2	3	4	5	6	7	8	9
CABINETRY Contempra Horizontal Grain Melamine - Catamaran	COUNTERTOP Hanstone Quartz - Angora	FLOORING 12x12 Olympia Construct	SHOWER/TUB WALL TILE 8x10 Olympia Construct	DOOR PULL 4113-1BPN-P Handles	TUB/SHOWER FIXTURE Moen Kyvos Chrome Posi-Temp Tub/Shower	VANITY FAUCET Moen Kyvos Chrome 1-Handle	VANITY SINK Bristol B606 U ndermount	TOILET Gerber Maxwell Standard Toilet



Here's How We Bring You Home



Melissa Gauthier,
Director,
Sales & Design

Congratulations On Selecting Your New eQ Home!

1

Virtual Appointment To Digitally Sign Agreement Of Purchase & Sale With Your eQ Sales Representative**
Provide Deposit Cheques
(Instruction Will Be Provided)

2

Provide Mortgage Pre-Approval From Your Bank

3

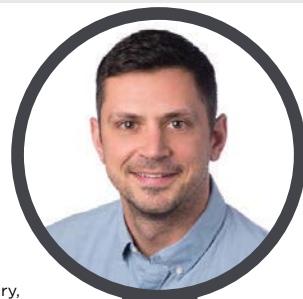
Review Agreement With Lawyer

4

Congratulations! Your New Home Purchase Is Now Official

5

Receive Your eQ Homeowner's Portal Login By Email Within 10 Business Days Of Firm Sale



Peter Jury,
VP of
Construction

Your New Home Construction Starts (If you purchase your home early enough in the construction process, these steps may apply to you.)

1

Lot Walk. Meet The Builder.**

2

Foundation Finished. Customer Care To Send Progress Photo

3

Roof Is On And Shingled. Receive A Progress Photo From Customer Care

4

Frame Walk With Customer Care And Construction Representative**

5

Home Exterior Completed. Receive A Progress Photo From Customer Care

6

Walk-Through For Blinds And Window Coverings Measurements**

7

Homeowner Orientation (PDI).** Customer Care Will Walk You Through Your New Home

8

Register Online For MyHome At Tarion.com

9

Submit AVID Construction Survey



Francesca Jacobs,
Customer Care
Manager

Welcome Home!

1

Submit 30-Day Tarion Warranty If Necessary***

2

Submit AVID Customer Satisfaction Survey (30 Days After Closing)

3

Submit 1-Year Tarion Warranty If Necessary***

4

Submit 2-Year Tarion Warranty If Necessary***

5

3 to 7-Year Tarion Warranty Starts***

This event may be in-person or virtual. An eQ Homes representative will contact you to confirm the details. *See your Tarion Warranty for details.



STEPHANIE VINTINNER

417 Avenue Du Ventoux,
Orléans, ON K4A 3R4
TEL: 613-555-7863
EMAIL: svintinner@eqhomes.ca

