



Designer Finished Homes

# THE PAISLEY

2,023 SQ. FT. - LOT 2-6





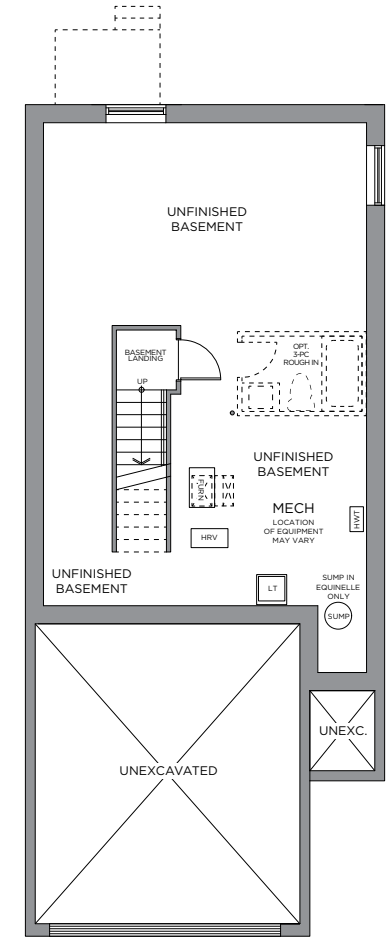
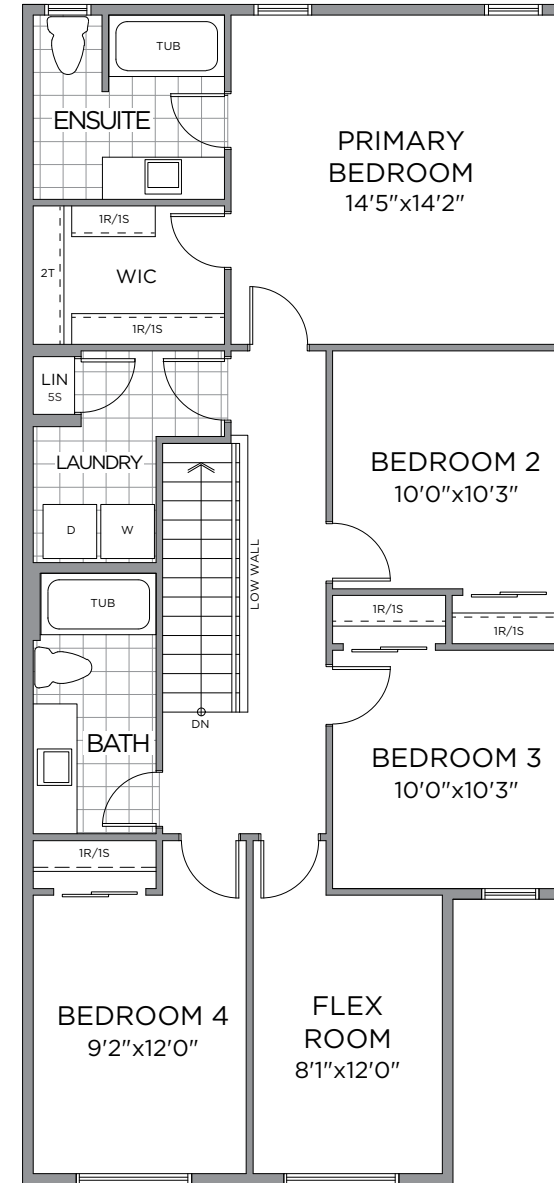
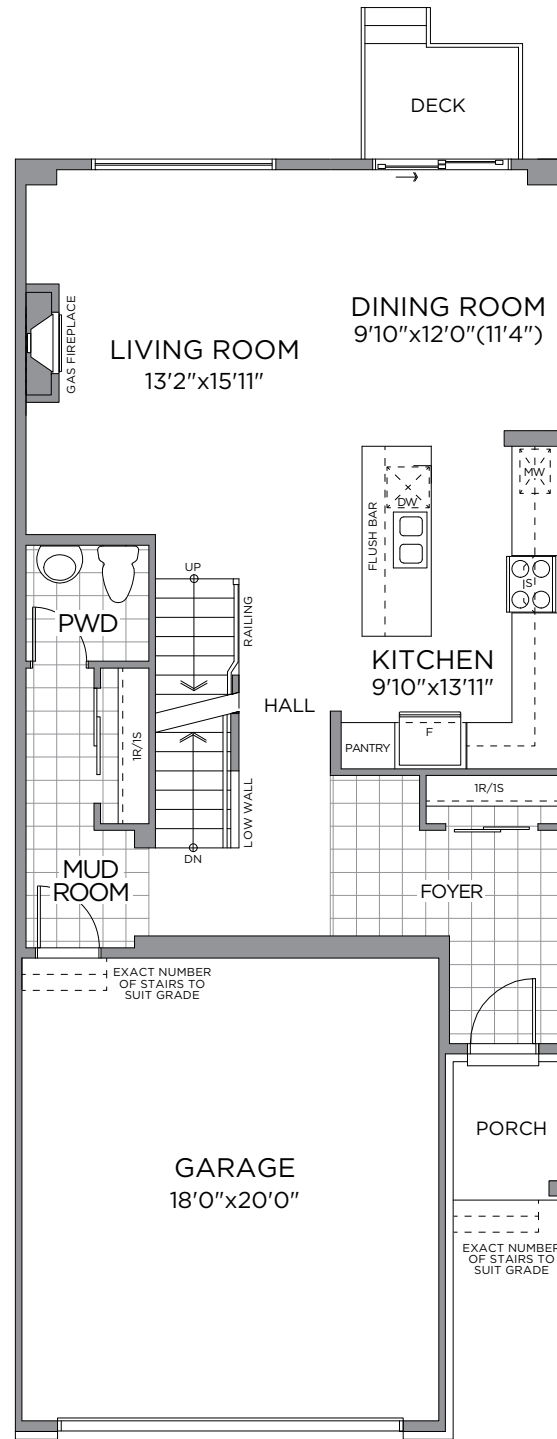
ELEVATION F

Artist's concept. E.&O.E.

Designer Finished Homes  
**THE PAISLEY**  
2,023 SQ. FT. - LOT 2-6



All drawings are artist's concept and may vary slightly from the final product. Actual usable floorspace may vary from stated area, and square footage has been calculated based on usable living space according to the TARION rules and does not include garage or unfinished basement areas. Drawings may show optional features which may not be included in the base price. Bulkheads & box outs may be required as chases for plumbing & mechanical. Garage main door location, if applicable, may vary subject to grade. Specifications subject to change without notice. Manufacturers' images are shown and may differ from the final product. E. & O.E. September 2024.

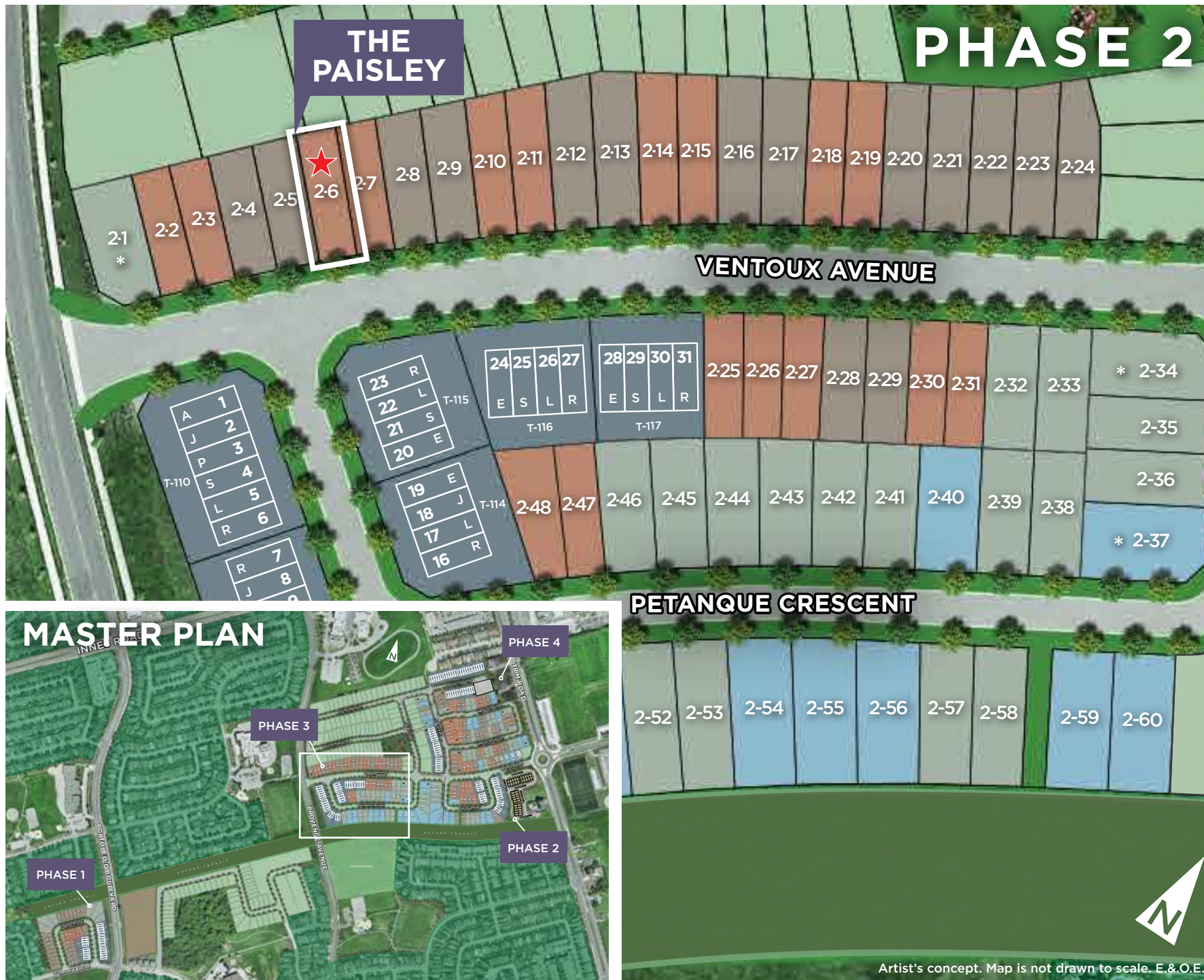




A  
NEIGHBOURHOOD  
IN THE CENTRE  
OF IT ALL



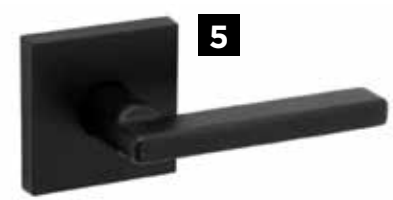
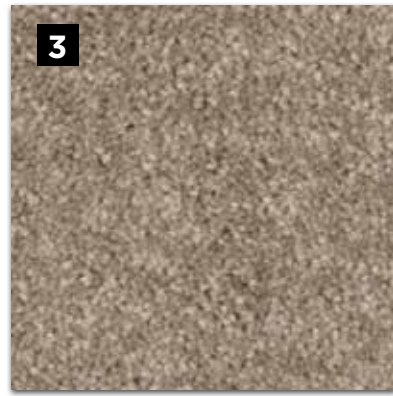
THE COMMUNITY  
SITE PLAN



Offering a spacious 2,023 square feet of living space, The Paisley is a superbly appointed Two-storey single family home, beautifully finished and complete with every modern convenience. The gourmet kitchen features a large breakfast bar flush with quartz countertops. Gather family and friends in the finely finished and expansive Great Room. Entertain friends over a meal in the exquisite Dining Room

MAKE A GRAND ENTRANCE WITH AN EXQUISITE  
DOOR HARDWARE, FLOOR & TRIM PACKAGE

INTERIOR



E.&O.E.

**1**  
MAIN FLOOR TILE  
12x24 Ceratec  
Gatsby Charleston  
Matte - Stacked

**2**  
VINYL PLANK  
FLOORING  
Goodfellow  
Dubai Sunset  
2663

**3**  
CARPET  
Beaulieu  
Coronet  
16787 Mystic  
Beige

**4**  
INTERIOR  
PAINT  
Benjamin  
Moore Calm  
OC-22

**5**  
INTERIOR DOOR  
HARDWARE  
Weiser Halifax  
Matte Black

**6**  
TRIM  
PACKAGE  
Trim  
Package  
#5

**7**  
INTERIOR  
DOORS  
Conmore  
5-Panel

**8**  
RAILING  
PACKAGE  
Standard  
Oak

THE FIREPLACE CENTREPIECE  
ADDS WARMTH AND AMBIENCE TO YOUR HOME

# FIREPLACE



E.&O.E.

**1**  
FIREPLACE INSERT  
Napoleon Ascent

**2**  
BEAM  
White Wrap Beam

A GREAT RECIPE STARTS WITH A  
**GOURMET CHEF KITCHEN**

**KITCHEN**



KITCHEN CABINET & ISLAND LAYOUT

E.&O.E.



1



2



3



4



5



6



7

**1**  
**HOOD FAN**  
 Cyclone 30"  
 Stainless  
 Chimney  
 Hoodfan

**2**  
**KITCHEN SINK**  
 Bristol  
 Double Bowl  
 Undermount -  
 Stainless Steel

**3**  
**KITCHEN FAUCET**  
 Moen Sleek  
 Matte  
 Black

**4**  
**DOOR PULL**  
 42160-  
 1MBK Matte  
 Black Pull

**5**  
**BACKSPLASH**  
 Centura Tribeca  
 2.5x8 Mud - 1/3  
 Horizontally  
 Offset

**6**  
**COUNTERTOP**  
 Silestone  
 Desert Silver

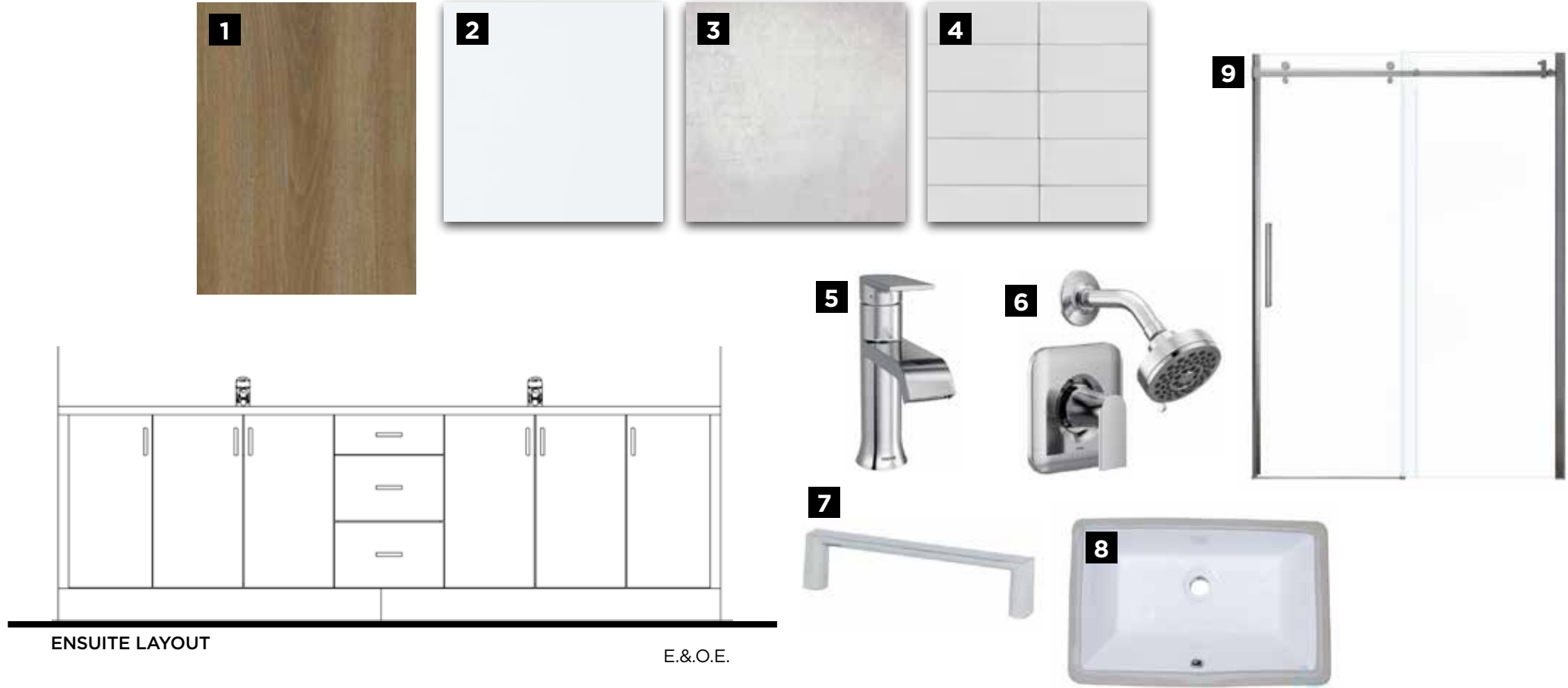
**7**  
**CABINERY**  
 MDF  
 Brookfield  
 Alpine  
 White

E.&O.E.



**A SUMPTUOUS MASTER ENSUITE  
YOUR COZY PRIVATE RETREAT**

**ENSUITE**



ENSUITE LAYOUT

E.&O.E.

<p><b>1</b></p> <p><b>CABINETRY</b> Melamine Nutmeg</p>	<p><b>2</b></p> <p><b>COUNTERTOP</b> Silestone - Miami White Quartz</p>	<p><b>3</b></p> <p><b>FLOORING</b> Centura Termal Metro Grey 13x13</p>	<p><b>4</b></p> <p><b>SHOWER WALL TILE</b> Ceratec Essential Bianco Glossy 4x16 - Horizontally Stacked</p>	<p><b>5</b></p> <p><b>VANITY FAUCET</b> Moen Genta Chrome</p>	<p><b>6</b></p> <p><b>SHOWER FIXTURE</b> Moen Genta Chrome</p>	<p><b>7</b></p> <p><b>DOOR PULL</b> 63096- 1PC Chrome</p>	<p><b>8</b></p> <p><b>VANITY SINK</b> B604 undermount</p>	<p><b>9</b></p> <p><b>SHOWER DOOR</b> Maax Halo Chrome</p>
-----------------------------------------------------------------	-------------------------------------------------------------------------------------	----------------------------------------------------------------------------------------	--------------------------------------------------------------------------------------------------------------------------------	-------------------------------------------------------------------------------	--------------------------------------------------------------------------------	---------------------------------------------------------------------------	-----------------------------------------------------------------------	----------------------------------------------------------------------------



**1**

**CABINETRY**  
Dorato Grey  
Uno

**2**

**COUNTERTOP**  
Laminate  
- 6690-46  
Paloma Polar

**3**

**FLOORING**  
Centura  
Giza Khafre  
13x13

**4**

**SHOWER WALL  
TILE**  
4x16 Ceratec  
Essential Bianco  
- Horizontally  
Stacked

**5**

**DOOR  
PULL**  
63096-  
1PC  
Chrome

**6**

**VANITY  
FAUCET**  
Moen  
Chateau  
chrome

**7**

**TUB/  
SHOWER  
FIXTURE**  
Moen  
Chateau  
chrome

**8**

**VANITY  
SINK**  
Contrac  
Reaves  
Drop In



### Congratulations On Selecting Your New eQ Home!



**Melissa Gauthier,**  
Director, Sales & Design

**1**

Sign Agreement of Purchase & Sale with your eQ Sales Representative.

Provide deposit cheques or complete EFT form (if applicable)

**2**

Provide Mortgage Approval from your lender

**3**

5-day conditional period starts. Review Agreement of Purchase & Sale with your Solicitor.

**4**

Congratulations! Your new home purchase is now official and 5-day conditional period ends.

**5**

Receive access to your homeowner portal.

### Your New Home Construction Starts



**Peter Jury,**  
VP of Construction

**1**

Lot Walk. Meet the builder.\*\*

**2**

Receive a progress photo from Customer Care.

**3**

Roof is on and shingled. Customer Care to send progress photo.

**4**

Frame Walk with Customer Care and Construction Representative.\*\*

**5**

Walk-through for blinds and window coverings measurements.\*\*

**6**

Homeowner Orientation (PDI).\*\* Customer Care will walk you through your new home.

**7**

Register online for MyHome at Tarion.com.

**8**

Submit AVID Construction Survey.

### Welcome Home!



**Francesca Jacobs,**  
Customer Care Manager

**1**

Submit 30-day Tarion Warranty if necessary.\*\*\*

**2**

Submit AVID Customer Satisfaction Survey (30 days after closing).

**3**

Submit AVID Customer Satisfaction Survey (30 days after closing).

**4**

Submit 2-year Tarion Warranty if necessary.\*\*\*

**5**

3 to 7-year Tarion Warranty

Here's How We Bring You Home

\*\*This event may be in-person or virtual. If you have opted in to attend this appointment, an eQ Homes representative will contact you to confirm the details. \*\*\*See your Tarion Warranty for details.



**STEPHANIE VINTINNER**  
New Home Sales Consultant

415 Avenue Du Ventoux,  
Orléans, ON K4A 3R4  
TEL: 613-555-7863  
EMAIL: [svintinner@eqhomes.ca](mailto:svintinner@eqhomes.ca)



All drawings are artist's concept and may vary slightly from the final product. Actual usable floorspace may vary from stated area, and square footage has been calculated based on usable living space according to the TARION rules and does not include garage or unfurnished basement areas. Drawings may show optional features which may not be included in the base price. Bulkheads & box outs may be required as chases for plumbing & mechanical. Garage main door location, if applicable, may vary subject to grade. In an ongoing review of homeowner's needs, changes may have been incorporated into our "New Home Features" and construction techniques. Specifications subject to change without notice. Manufacturers' images are shown and may differ from the final product. E. & O.E. January 2024.