



ELEVATION F

Artist's concept. E.&O.E.

Designer Finished Homes

THE OLIVER

2,822 SQ. FT. +1,074 FINISHED BASEMENT

LOT 2-71





ELEVATION F

Artist's concept. E.&O.E.

Designer Finished Homes

THE OLIVER

2,822 SQ. FT. +1,074 FINISHED BASEMENT
LOT 2-71

Our award-winning Interior Design Team has hand selected all of the show-stopping features and finishes in this unique eQ Designer Finished Home. Your future home boasts a harmonious blend of the finest interior appointments, all designed to enrich your life.

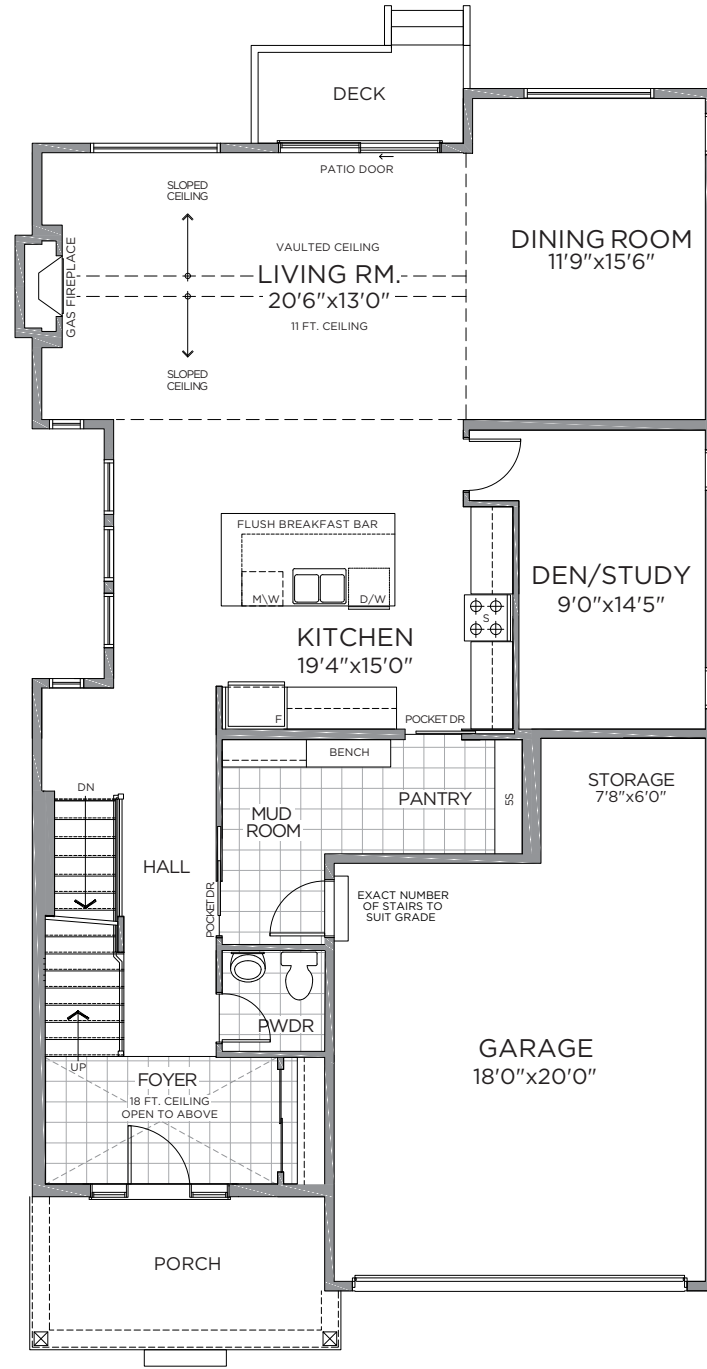




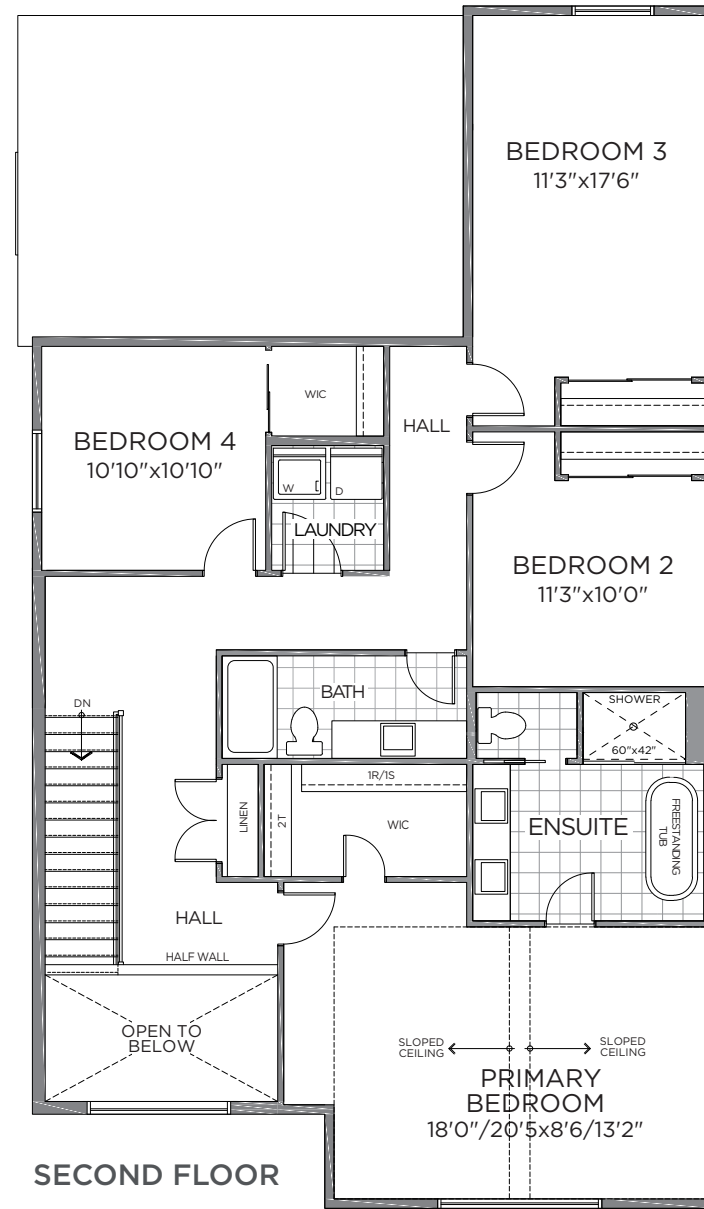
Designer Finished Homes
THE OLIVER
 2,822 SQ. FT.
 +1,074 FINISHED BASEMENT
 LOT 2-71



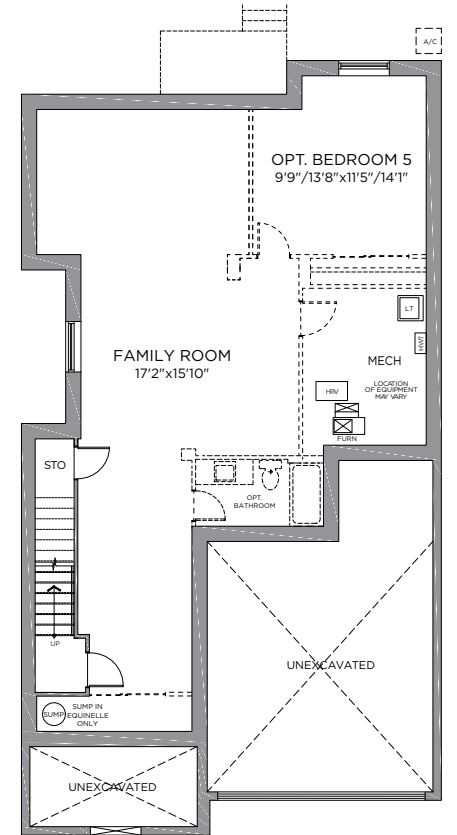
All drawings are artist's concept and may vary slightly from the final product. Actual usable floorspace may vary from stated area, and square footage has been calculated based on usable living space according to the TARIION rules and does not include garage or unfurnished basement areas. Drawings may show optional features which may not be included in the base price. Bulkheads & box outs may be required as chases for plumbing & mechanical. Garage main door location, if applicable, may vary subject to grade. Specifications subject to change without notice. Manufacturers' images are shown and may differ from the final product. E. & O.E. July 2022.



GROUND FLOOR



SECOND FLOOR



FINISHED BASEMENT

DESIGNER FINISHED HOME

A Designer Finished Home means it's a quick move-in that includes show-stopping features and finishes expertly selected for their timeless beauty. Our award-winning design team hand selected all of the features and finishes boasting a harmonious blend of the finest interior appointments.

MEET THE DESIGNER BEHIND THE HOME



SHANNON GRANGER
eQ Design Consultant

“*This house is Urban Farmhouse style. A mix of contemporary and traditional black and white finishes with natural oak blending, metals and wood for a modern look with cozy rustic wood tones.*”



A
NEIGHBOURHOOD
IN THE CENTRE
OF IT ALL





The Oliver leaves a lasting impression with its distinctive architectural design, large picture windows and high vaulted ceilings. With a beautiful front walkway, welcoming covered porch, and elegant interior, this is a spacious, modern home in an exceptional neighbourhood. Experience 2,822 sq.ft. of masterfully-designed living space, four bedrooms, a den/study that doubles as a home office, a 1,074 sq.ft. finished basement and your own private backyard. Dramatic vaulted ceilings in the living room create an elevated ambiance, illuminating the main floor with natural light.



E.&O.E.

1

HARDIE BOARD &
BATTEN (MAIN SIDING
FRONT OF HOUSE)
Arctic White - Smooth

2

HARDIE PLANK
(MAIN SIDING
FRONT OF HOUSE)
Arctic White -
Select Cedarmill

3

FASCIA/
SOFFIT/
ALUMINUM
TRIM
White

4

METAL ROOF
ACCENT
Black

5

ROOF
SHINGLES
Black

6

FRONT
DOOR
ENTRY
Black

7

VINYL SIDING
(REAR & SIDES
OF HOUSE)
Nickel

8

WINDOWS
Black

9

GARAGE
DOOR
Black

MAKE A GRAND ENTRANCE WITH AN EXQUISITE
DOOR HARDWARE, FLOOR & TRIM PACKAGE

INTERIOR



E.&O.E.

1
MAIN ENTRY
TILE
Authentik
Westside 12x24-
Offset - White

2
HARDWOOD
FLOORING
Lauzon Ambiance
Tempo Red Oak -
Arabesque

3
CARPET ON
STAIRS
Beaulieu
Sultana II -
Democracy

4
INTERIOR
PAINT
Benjamin
Moore -
Calm

5
INTERIOR
DOOR
HARDWARE
Halifax Square
- Black

6
TRIM PACKAGE
Package #4 -
Baseboard 3533/
Casing 1737/ Shoe
Mold 1698

7
INTERIOR
DOORS
Conmore
5-Panel
Smooth

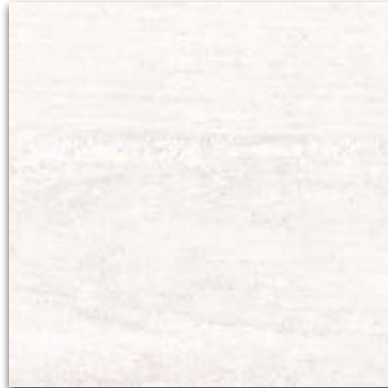
THE FIREPLACE CENTREPIECE
ADDS WARMTH AND AMBIENCE TO YOUR HOME

FIREPLACE

1



2



E.&O.E.

1

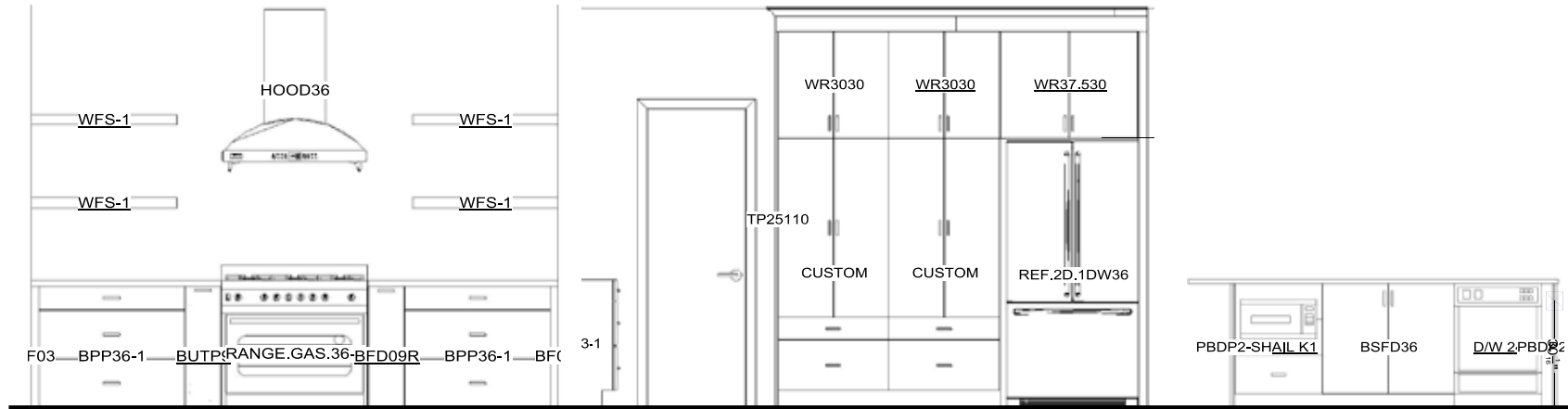
**FIREPLACE
INSERT**
Savannah
Elite BL21

2

TILE SURROUND
Authentik
Westside 12x24-
Offset - White

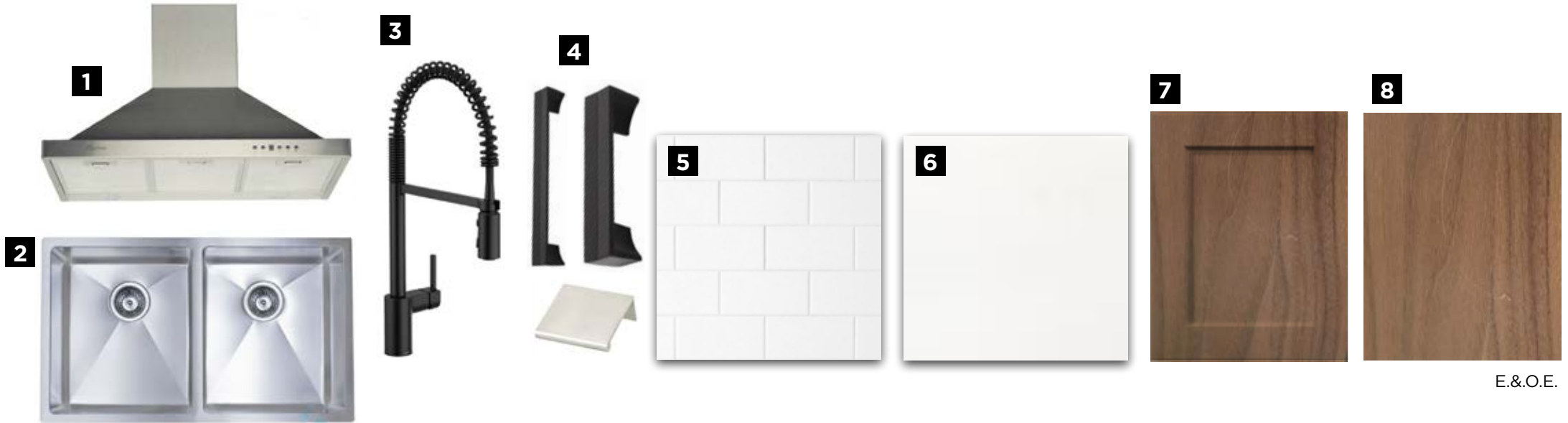
A GREAT RECIPE STARTS WITH A
GOURMET CHEF KITCHEN

KITCHEN



KITCHEN CABINET & ISLAND LAYOUT

E.&O.E.



E.&O.E.

1
HOOD FAN
Cyclone
SC30030SS
Chimney -
Stainless Steel

2
KITCHEN
SINK
Bristol B1807-
Stainless
Steel

3
KITCHEN FAUCET
Moen Align
Spring - 6190BL -
Matte Black

4
DOOR PULL
Berenson
Bo76089/
B076092/14032

5
BACKSPLASH
Olympia Colour
and Dimensions
3x6 - Arctic
White

6
COUNTERTOP
Quartz
Silestone -
Miami Vena

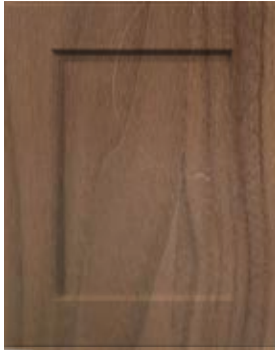
7
CABINETRY - BASE
AND TALL CABINET
Brookfield Birch
Door - Walnut Flat
Slab Clear

8
ISLAND
AND
FLOATING
SHELVES
Walnut Clear

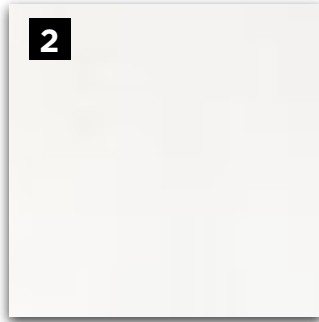
**A SUMPTUOUS PRIMARY ENSUITE
YOUR COZY PRIVATE RETREAT**

ENSUITE

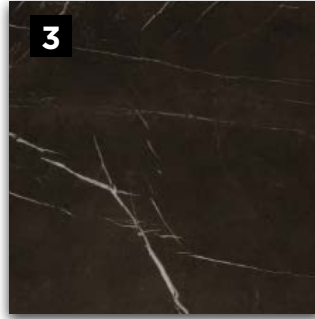
1



2



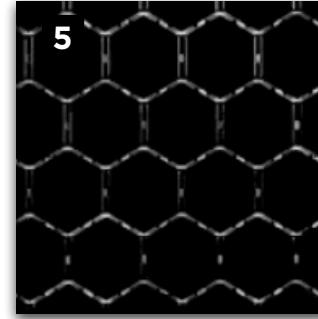
3



4



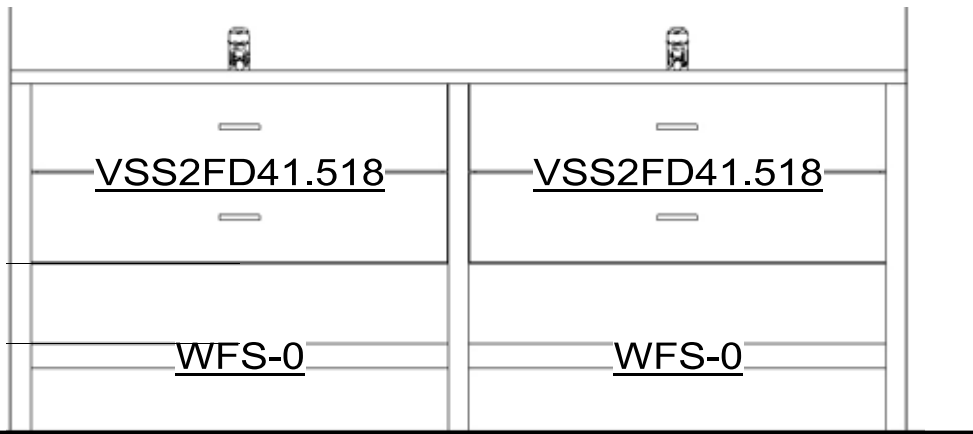
5



6



10



PRIMARY ENSUITE LAYOUT

E.&O.E.

7



8



9



11



E.&O.E.

1

CABINETRY
Brookfield
Slab Walnut
- Clear

2

COUNTERTOP
Quartz -
Silestone -
Miami Vena

3

**FLOOR
TILE**
Ceratec
12x24
Gatsby -
Cabaret

4

**SHOWER/
TUB WALL
TILE**
Ceratec
Essentials
4x16 - Bianco

5

**ENSUITE
SHOWER FLOOR**
Olympia
Quebec
Hexagon - Black

6

DOOR PULL
Richelieu
BP816096900

7

**VANITY
FAUCET**
Moen Align
Single Hole -
Matte Black

8

**SHOWER
FIXTURE**
Moen Align
Matte
Black -
T2192EPBL

9

TUB FAUCET
Moen Align
2-Handle Deck
Mount Roman
Tub Faucet Matte
Black - T393BL

10

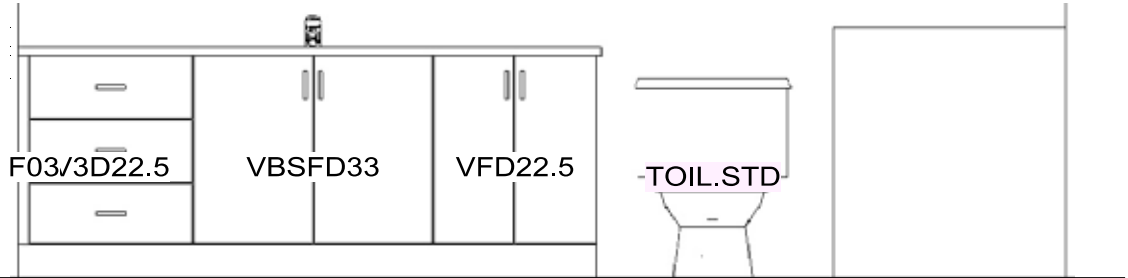
**VANITY
SINK**
Bristol B606
Square
Undermount

11

TOILET
Profit -
Amador
Dual Flush

FULL BATHROOMS
A BLEND OF LUXURY & MODERNITY

PRIMARY BATHROOM



PRIMARY BATH LAYOUT

E.&O.E.

<p>1</p> <p>CABINETRY Brookfield MDF- Sea</p>	<p>2</p> <p>COUNTERTOP Laminate - Arborite - Mont Blanc</p>	<p>3</p> <p>FLOORING Ceratec Authentik Westwide 12x24 - White</p>	<p>4</p> <p>SHOWER/TUB WALL TILE Euro Soho Glassy 4x16 4x16 - Cloud Blue</p>	<p>5</p> <p>DOOR PULL Berenson - 24096-217</p>	<p>6</p> <p>VANITY FAUCET Moen Chatea Chrome - L5621</p>	<p>7</p> <p>TUB/ SHOWER FIXTURE Moen Chateau</p>	<p>8</p> <p>VANITY SINK Contrac Reaves 4" Centr Drop-In</p>	<p>9</p> <p>TOILET Por-flo Amador</p>
---	---	---	--	--	--	--	---	---

BASEMENT BATHROOMS
A BLEND OF SPLENDID AND CONTEMPORARY

BASEMENT BATHROOM

1

2

3

4

5

6

7

8

9

F03

CTIB-TV

VDDC51

TK0496

TOIL.STD

E.&O.E.

BASEMENT BATH LAYOUT

E.&O.E.

1

CABINTRY
Brookfield
Oak-
Midnight

2

COUNTERTOP
Laminate
- Arborite -
Mont Blanc

3

FLOORING
Ceratec
Authentik
Westwide
12x24 - White

4

**SHOWER/TUB
WALL TILE**
Ceratec
Essentioals
4x16 - Bianco

5

DOOR PULL
Berenson
45160

6

**VANITY
FAUCET**
Moen Chatea
Chrome -
L5621

7

**TUB/
SHOWER
FIXTURE**
Moen Chateau

8

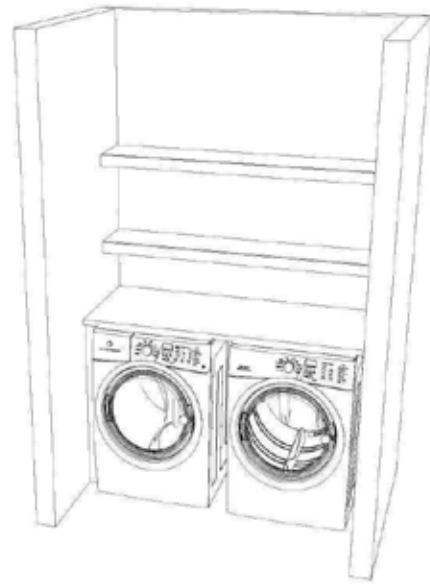
VANITY SINK
Contrac
Reaves 4"
Centr
Drop-In

9

TOILET
Por-flo
Amador

LAUNDRY ROOM
WITH SMARTLY DESIGNED
SPACE FOR STORAGE

LAUNDRY ROOM



1



2



3



1

CABINETRY
Slab -
Walnut -
Clear

2

COUNTERTOP
Laminate
- Arborite -
Mont Blanc

3

FLOORING
Ceratec Authentik
Westwide 12x24 -
White

The eQ HOME BUYER'S PATH

SINGLES & TOWNS - PARCEL OF TIED LAND (POTL)



Congratulations On Selecting Your New eQ Home!

Melissa Gauthier,
Director,
Sales & Design



Your New Home Construction Starts

Peter Jury,
VP Of
Construction



Welcome Home!

Francesca Jacobs,
Customer Care
Manager

1

Virtual Appointment To Digitally Sign Agreement Of Purchase & Sale With Your eQ Sales Representative**
Provide Deposit Cheques
(Instruction Will Be Provided)

2

Solicitor Review of Documents & 10-Day Rescission Period Starts

3

Provide Mortgage Pre-Approval From Your Bank

4

Congratulations! Your New Home Purchase Is Now Official
10-Day Rescission Period Ends

5

Receive Your eQ Homeowner's Portal Login By Email Within 10 Business Days Of Firm Sale

1

Lot Walk. Meet The Builder**

3

Roof Is On And Shingled. Customer Care To Send Progress Photo

5

Home Exterior Completed. Receive A Progress Photo From Customer Care

7

Homeowner Orientation (PDI).** Customer Care Will Walk You Through Your New Home

9

Submit AVID Construction Survey

2

Receive A Progress Photo From Customer Care

4

Frame Walk With Customer Care And Construction Representative**

6

Walk-Through For Blinds And Window Coverings Measurements**

8

Register Online For MyHome At Tarion.com

1

Occupancy Starts

3

Submit AVID Customer Satisfaction Survey (30 days after taking occupancy)

5

Election Day Turnover Process Begins

7

Submit 1-Year Tarion Warranty Starts If Necessary***

9

3 to 7-Year Tarion Warranty Starts***

2

Submit 30-Day Tarion Warranty. If Necessary***

4

Closing Day

6

Complete Common Elements Performance Audit Survey

8

Submit 2-Year Tarion Warranty Starts If Necessary***

Here's How We Bring You Home

This event may be in-person or virtual. An eQ Homes representative will contact you to confirm the details. * See your Tarion Warranty for details.



STEPHANIE VINTINNER
New Home Sales Consultant

2128 TRIM ROAD, ORLEANS, ON, K4A 1H9
TEL: 613-555-7863
EMAIL: svintinner@eqhomes.ca



All drawings are artist's concept and may vary slightly from the final product. Actual usable floorspace may vary from stated area, and square footage has been calculated based on usable living space according to the TARION rules and does not include garage or unfurnished basement areas. Drawings may show optional features which may not be included in the base price. Bulkheads & box outs may be required as chases for plumbing & mechanical. Garage main door location, if applicable, may vary subject to grade. In an ongoing review of homeowner's needs, changes may have been incorporated into our "New Home Features" and construction techniques. Specifications subject to change without notice. Manufacturers' images are shown and may differ from the final product. E. & O.E. July 2022.