



Designer Finished Homes

# THE HOLDEN

CT1-10 | 1,147 SQ. FT.

2 BEDS | 2 BATHS

PROVENCE  
ORLÉANS



PROVENCE  
ORLÉANS



The last City Town available in Provence! The Holden is a corner unit so it has extra space out front and on the side property. Upgraded to 2 bathrooms. It is appointed with warm caramel toned flooring with modern cabinets and upgraded quartz countertops throughout. Sleek black plumbing fixtures in the kitchen and bathrooms and stainless-steel LG appliances.



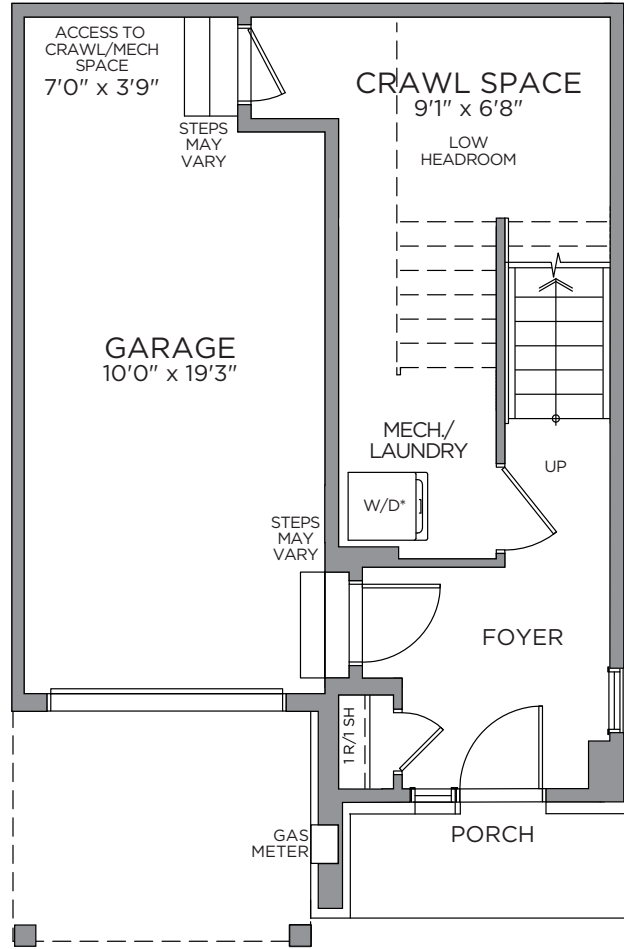
Artist's concept. E.&O.E.

Designer Finished Homes

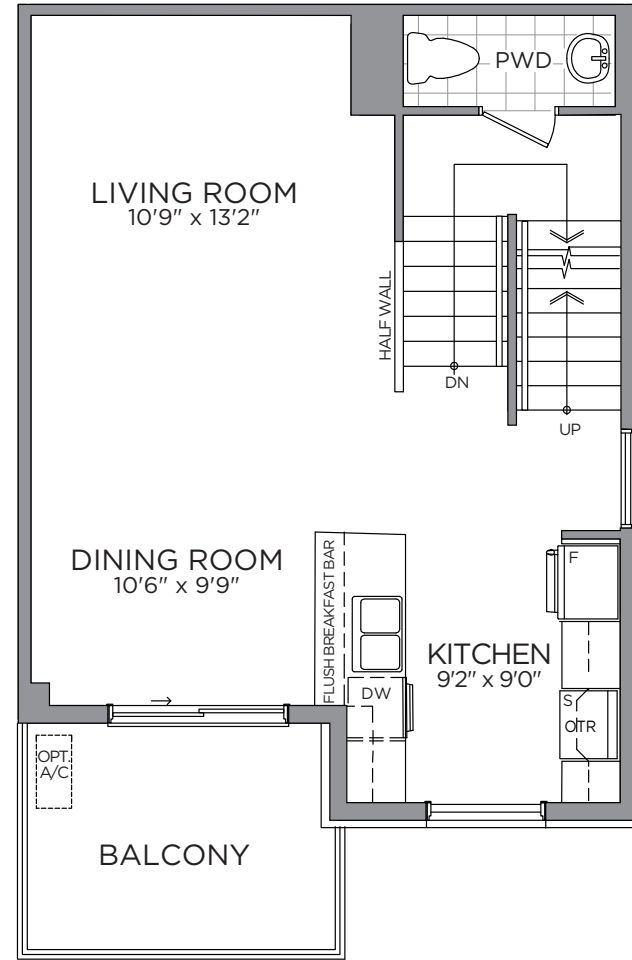
**THE HOLDEN**

CT1-10 | 1,147 SQ. FT.

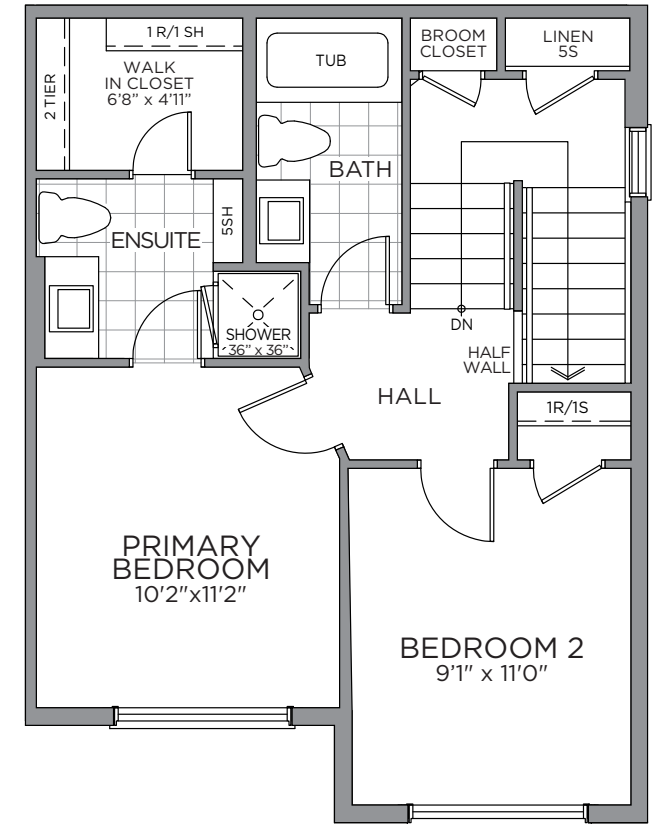
2 BEDS | 2 BATHS



GROUND FLOOR PLAN



SECOND FLOOR PLAN



THIRD FLOOR PLAN

All drawings are artist's concept and may vary slightly from the final product. Actual usable floorspace may vary from stated area, and square footage has been calculated based on usable living space according to the TARION rules and does not include garage or unfurnished basement areas. Drawings may show optional features which may not be included in the base price. Bulkheads & box outs may be required as chases for plumbing & mechanical. Garage main door location, if applicable, may vary subject to grade. Specifications subject to change without notice. Manufacturers' images are shown and may differ from the final product. E. & O.E. June 2023.

\*Washer and Dryer location for optional third floor plan only. Prices, dimensions and specifications are subject to change without notice. All renderings are artist's concept. E. & O.E. June 1, 2023



A  
NEIGHBOURHOOD  
IN THE CENTRE  
OF IT ALL



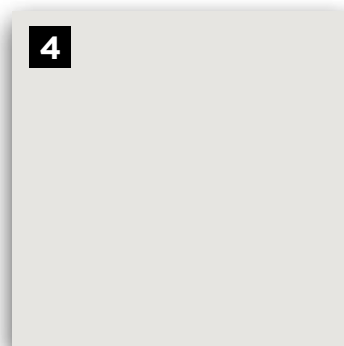
THE COMMUNITY  
SITE PLAN



PHASE 2

MAKE A GRAND ENTRANCE WITH AN  
EXQUISITE DOOR HARDWARE,  
FLOOR & TRIM PACKAGE

INTERIOR DETAILS



E.&O.E.

**1**  
**MAIN ENTRY**  
Laminate  
Plank Flooring  
- Dubal -  
Sunset

**2**  
**LAMINATE  
FLOORING**  
Laminate Plank  
Flooring -  
Dubal - Sunset

**3**  
**CARPET**  
Beaulieu  
Sultana  
II - Maple  
Wood

**4**  
**INTERIOR  
PAINT**  
Benjamin  
Moore OC-  
22 - Calm

**5**  
**INTERIOR  
DOOR  
HARDWARE**  
Layton Satin  
Chrome Levers

**6**  
**INTERIOR  
DOORS**  
Cambridge  
2 Panel  
Smooth

A GREAT RECIPE STARTS WITH A  
**GOURMET CHEF KITCHEN**

**KITCHEN**



E.&O.E.



E.&O.E.

**1**  
**MICROWAVE HOOD FAN**  
 GE Over-the-Range Microwave

**2**  
**KITCHEN SINK**  
 Bristol B1807 Double Bowl Undermount Sink - Stainless Steel

**3**  
**DOOR PULL**  
 Standard HU64 - Black Matte

**4**  
**COUNTERTOP**  
 Silestone Quartz - Halcyon

**5**  
**BACKSPLASH**  
 Level 4 - 8" Oly Col & Dim Elongated Hexagon Bright - Vertical - Taupe

**6**  
**CABINETRY**  
 Thermfoil Mission - Satin White

**7**  
**KITCHEN FAUCET**  
 Moen Sleek Stainless - 7864BL - Black Matte

A WELCOMING OASIS FOR YOUR GUESTS IS  
A WELL APPOINTED POWDER ROOM

POWDER ROOM



E.&O.E.

**1**  
**FLOOR TILE**  
Ceratec  
12x12  
Explorer -  
Barcelona

**2**  
**VANITY  
SINK**  
Standard  
Pedestal  
Sink

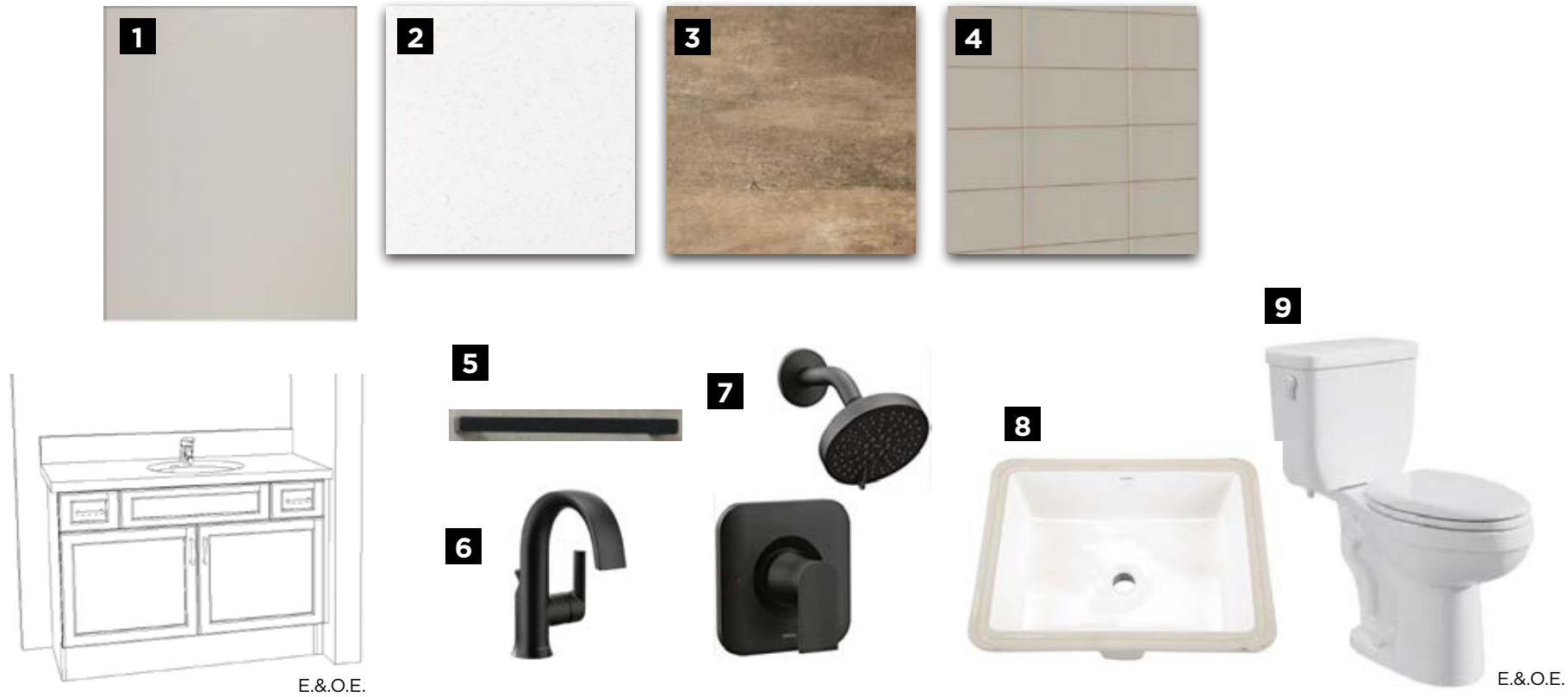
**3**  
**TOILET**  
ProFlo - Jerritt  
2pc High Effic.  
1.28 GPF -  
White

**4**  
**VANITY  
FAUCET**  
Genta  
6702  
Chrome



**A SUMPTUOUS PRIMARY ENSUITE**  
YOUR COZY PRIVATE RETREAT

**PRIMARY ENSUITE**



E.&O.E.

E.&O.E.

**1**

**CABINETRY**  
COMO 5/8  
Melamine -  
Willow Grey

**2**

**COUNTERTOP**  
Silestone  
Quartz - Miami  
Vena

**3**

**FLOORING**  
Ceratec 12x12  
Explorer -  
Barcelona

**4**

**SHOWER/TUB WALL  
TILE**  
Ceratec 4x16  
Essential Subway  
Tile Polvere Gloss  
Horizontally Stacked

**5**

**DOOR  
PULL**  
Standard  
HU64 -  
Black Matte

**6**

**VANITY  
FAUCET**  
Genta  
6702BL  
- Black  
Matte

**7**

**SHOWER  
FIXTURE**  
Genta  
T2473EPBL+  
2520 - Black  
Matte

**8**

**VANITY  
SINK**  
Wicker Park  
Rectangular  
Under  
Counter

**9**

**TOILET**  
ProFlo - Jerritt  
2pc High  
Efficiency 1.28  
GPF - White



**1**  
**CABINTRY**  
COMO 3/4  
Melamine  
- Larice  
Blanco

**2**  
**COUNTERTOP**  
Silestone  
Quartz - Lena

**3**  
**FLOORING**  
Ceratec  
12x12  
Explorer

**4**  
**SHOWER/TUB  
WALL TILE**  
Ceratec 4x16  
Essential Subway Tile  
- Horizontally Stacked

**5**  
**DOOR PULL**  
Standard  
HU64-  
Black Matte

**6**  
**VANITY  
FAUCET**  
Genta  
6702BL -  
Black Matte

**7**  
**TUB/SHOWER  
FIXTURE**  
Genta  
T2473epbl+2520  
- Black Matte

**8**  
**VANITY SINK**  
Wicker Park  
Rectancular  
Under  
Counter

**9**  
**TOILET**  
ProFlo - Jerritt  
2pc High  
Efficiency 1.28  
GPF - White

ENJOY THE EASE AND LUXURY OF LIFE  
WITH THE HELP OF **MODERN APPLIANCES**

## APPLIANCES



E.&O.E.

**1**

### WASHER

Whirlpool - 5.0  
cu. ft. Front Load  
Washer - White

**2**

### DRYER

Whirlpool - 7.4  
cu. ft. Front Load  
Electric Dryer

**3**

### HOOD FAN

GE Over-  
the-Range  
Microwave

**4**

### RANGE

LG - 30"  
Electric Smooth  
Top Range

**5**

### DISHWASHER

LG - 24" Built In  
Front Control  
Dishwasher

**6**

### REFRIGERATOR

LG - 36" Counter  
Depth French  
Door Fridge



### Congratulations On Selecting Your New eQ Home!



Melissa Gauthier,  
Director, Sales & Design

1

Sign Agreement of Purchase & Sale with your eQ Sales Representative.

Provide deposit cheques or complete EFT form (if applicable)

2

Provide Mortgage Approval from your lender

3

5-day conditional period starts. Review Agreement of Purchase & Sale with your Solicitor.

4

Congratulations! Your new home purchase is now official and 5-day conditional period ends.

5

Receive access to your homeowner portal.

### Your New Home Construction Starts



Peter Jury,  
VP of Construction

1

Lot Walk. Meet the builder.\*\*

2

Receive a progress photo from Customer Care.

3

Roof is on and shingled. Customer Care to send progress photo.

4

Frame Walk with Customer Care and Construction Representative.\*\*

5

Walk-through for blinds and window coverings measurements.\*\*

6

Homeowner Orientation (PDI).\*\* Customer Care will walk you through your new home.

7

Register online for MyHome at Tarion.com.

8

Submit AVID Construction Survey.

### Welcome Home!



Francesca Jacobs,  
Customer Care Manager

1

Submit 30-day Tarion Warranty if necessary.\*\*\*

2

Submit AVID Customer Satisfaction Survey (30 days after closing).

3

Submit AVID Customer Satisfaction Survey (30 days after closing).

4

Submit 2-year Tarion Warranty if necessary.\*\*\*

5

3 to 7-year Tarion Warranty

Here's How We Bring You Home

\*\*This event may be in-person or virtual. If you have opted in to attend this appointment, an eQ Homes representative will contact you to confirm the details. \*\*\*See your Tarion Warranty for details.



**STEPHANIE VINTINNER**  
New Home Sales Consultant

2128 TRIM ROAD, ORLEANS, ON, K4A 1H9  
TEL: 613-555-7863  
EMAIL: [svintinner@eqhomes.ca](mailto:svintinner@eqhomes.ca)



All drawings are artist's concept and may vary slightly from the final product. Actual usable floorspace may vary from stated area, and square footage has been calculated based on usable living space according to the TARION rules and does not include garage or unfurnished basement areas. Drawings may show optional features which may not be included in the base price. Bulkheads & box outs may be required as chases for plumbing & mechanical. Garage main door location, if applicable, may vary subject to grade. In an ongoing review of homeowner's needs, changes may have been incorporated into our "New Home Features" and construction techniques. Specifications subject to change without notice. Manufacturers' images are shown and may differ from the final product. E. & O.E. June 2023.