

Designer Finished Homes

THE JUDE (END)

CT4-30 | 1,378 SQ. FT. | 3 BEDS | 1.5 BATHS



Artist's concept. E.&O.E.

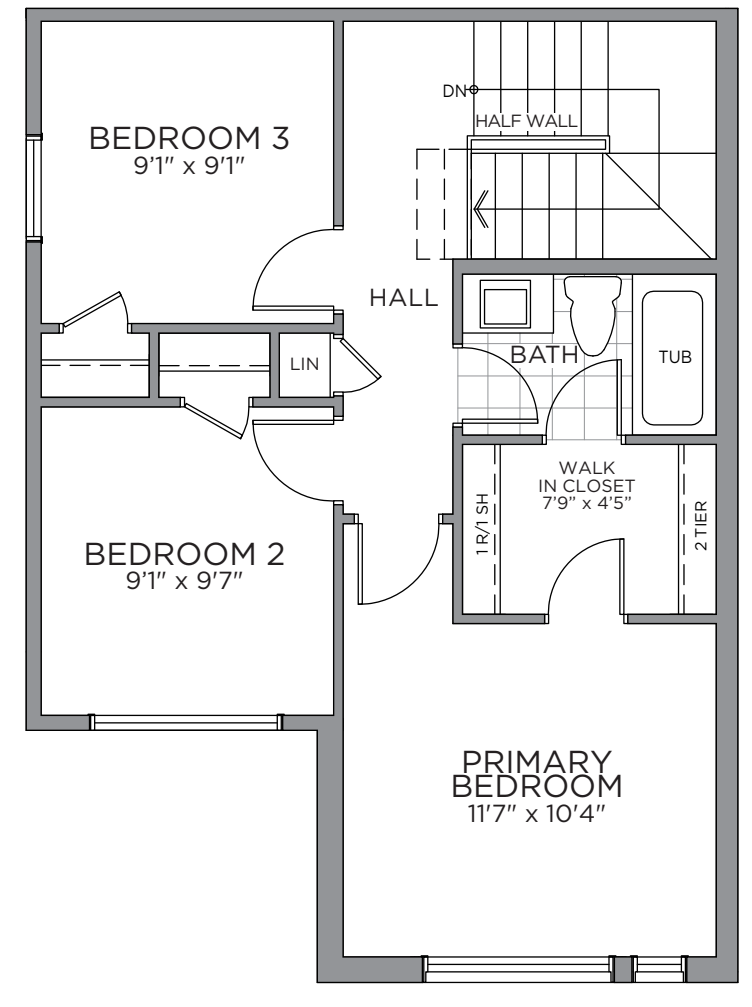
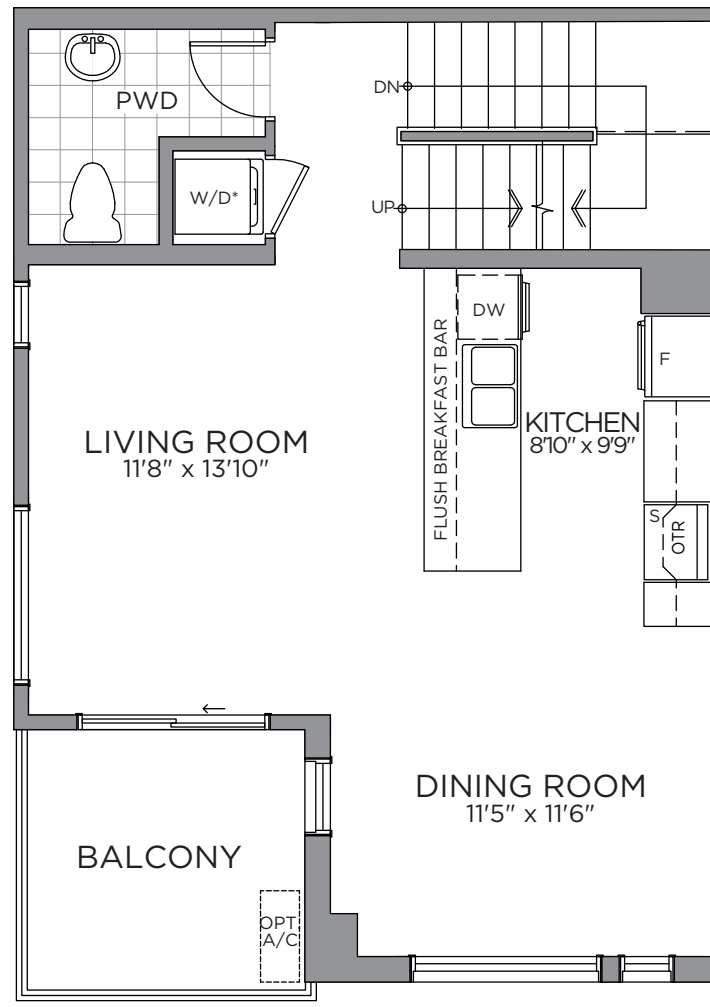
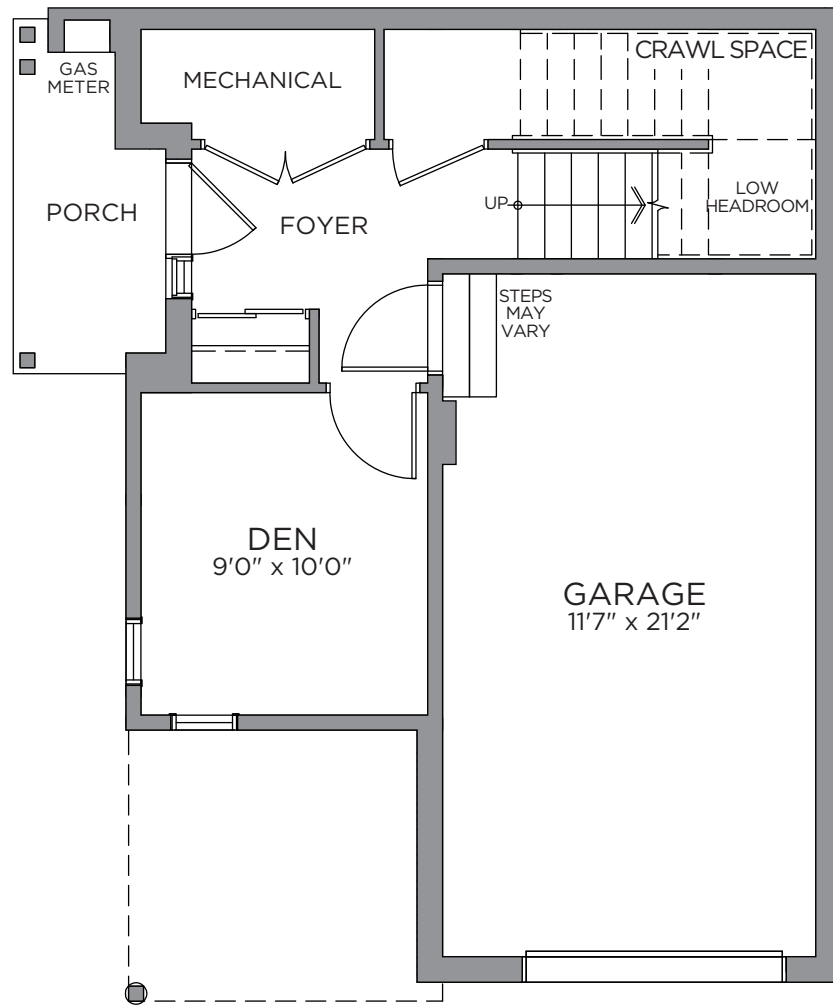


Artist's concept. E.&O.E.

Designer Finished Homes

THE JUDE (END)

CT4-29 | 1,378 SQ. FT. | 3 BEDS | 1.5 BATHS



*Washer and Dryer location for optional third floor plan only. Prices, dimensions and specifications are subject to change without notice. All renderings are artist's concept. E. & O.E. February 2024.

INTERIOR DETAILS

MAKE A GRAND ENTRANCE WITH AN EXQUISITE **DOOR HARDWARE, FLOOR & TRIM PACKAGE**



E.&O.E.

1

MAIN ENTRY
Laminate
Plank Flooring
- Dubal-
Tikehau

2

**LAMINATE
FLOORING**
Laminate Plank
Flooring -
Dubal- Tikehau

3

CARPET
Beaulieu
Sultana
II - Tender
Taupe

4

**INTERIOR
PAINT**
Benjamin
Moore OC-
22 - Calm

5

**INTERIOR
DOOR
HARDWARE**
Layton Satin
Chrome Levers

6

TRIM PACKAGE
MDF Flat (3/8"
x 3-7/8") / MDF
(7/16" x 11/16")

7

**INTERIOR
DOORS**
Cambridge
2 Panel
Smooth

PRIMARY ENSUITE/MAIN BATH

WELL APPOINTED WITH SPA-INSPIRED COMFORTS IN YOUR COZY PRIVATE RETREAT



1

CABINETRY
Como
Melamine -
Rovere Chiostro

2

COUNTERTOP
Laminate -
Arctic Tundra

3

FLOORING
Ceratec 12x12
Burlingstone
- Taupe

4

**SHOWER/TUB
WALL TILE**
Ceratec 8x10
Burlingstone - Taupe

5

**CABINET
PULL**
Brushed
Nickel

6

**VANITY
FAUCET**
Moen Chateau-
Chrome

7

**TUB/SHOWER
FIXTURE**
Moen Chateau-
Chrome

8

VANITY SINK
Contrac
Reaves Drop-
In - White

KITCHEN

A GREAT RECIPE STARTS WITH A **GOURMET CHEF KITCHEN**



1
KITCHEN SINK
Nautika Undermount
Double Bowl -
Stainless Steel

2
**CABINETY
PULL**
Matte Black

3
BACKSPLASH
Ceratec 2x10
Bricklane -
Geso

4
COUNTERTOP
Silestone
Quartz- Lena

5
CABINETY
Mission
Thermofoil -
Willow Grey

6
**KITCHEN
FAUCET**
Moen Arbor
- Chrome

APPLIANCES

ENJOY THE EASE AND LUXURY OF LIFE WITH THE HELP OF **MODERN APPLIANCES**



1
WASHER
Whirlpool 5.0
C/F Front
Load - White

2
DRYER
Whirlpool 7.4
C/F Front
Load Electric

3
HOOD FAN
GE Over-
the-Range
Microwave

4
RANGE
LG 30"
Electric
Smooth Top

5
DISHWASHER
LG 24" Built In
Front Control

6
REFRIGERATOR
LG 36" Counter
Depth French
Door

To call **Findlay Creek** home, contact your **Pathways Sales Consultant** to book an appointment.



JENNIFER DEAN
New Home Sales Consultant
TEL: 613.822.7247
EMAIL: jdean@eqhomes.ca



CLAUDIA WARNER-JACOBS
New Home Sales Consultant
TEL: 613.822.7247
EMAIL: CWarnerJacobs@eqhomes.ca

PATHWAYS SALES OFFICE:

122 Dun Skipper Drive, Ottawa, ON, K1X 0G2

All drawings are artist's concept and may vary slightly from the final product. Actual usable floorspace may vary from stated area, and square footage has been calculated based on usable living space according to the TARION rules and does not include garage or unfurnished basement areas. Drawings may show optional features which may not be included in the base price. Bulkheads & box outs may be required as chases for plumbing & mechanical. Garage main door location, if applicable, may vary subject to grade. In an ongoing review of homeowner's needs, changes may have been incorporated into our "New Home Features" and construction techniques. Specifications subject to change without notice. Manufacturers' images are shown and may differ from the final product. E. & O.E. February 2024.

