



ARTIST'S CONCEPT

**CITY
TOWNS**
BACK-TO-BACK
TOWNHOMES

THE HOLDEN
1,147 SQ. FT.
2 BEDROOM | 1.5 BATH



ARTIST'S CONCEPT

THE HOLDEN

1,147 SQ. FT.
2 BEDROOM | 1.5 BATH

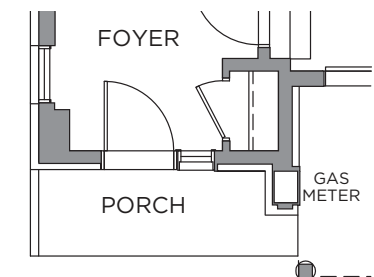
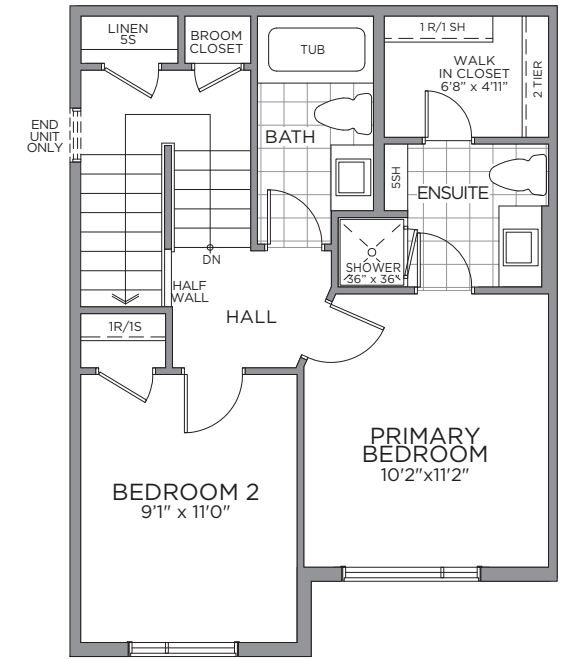
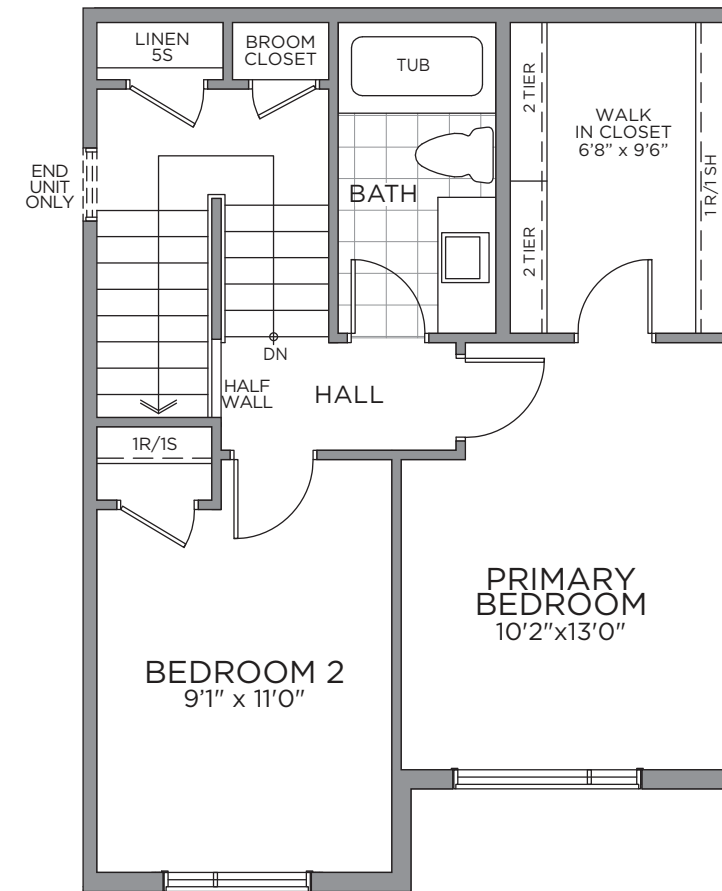
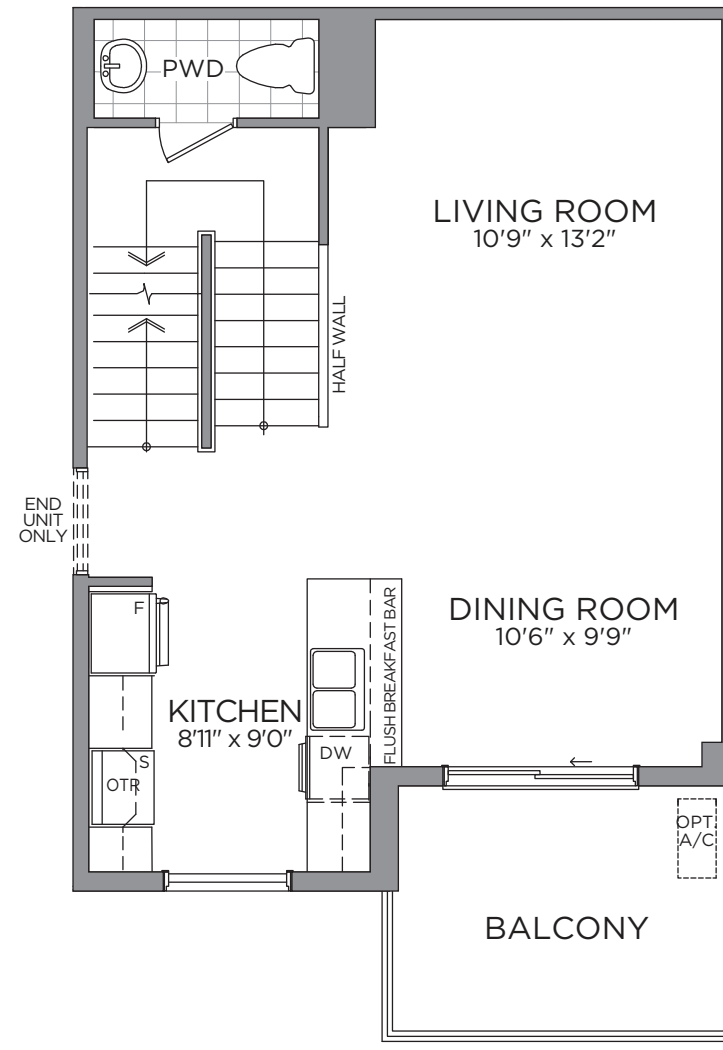
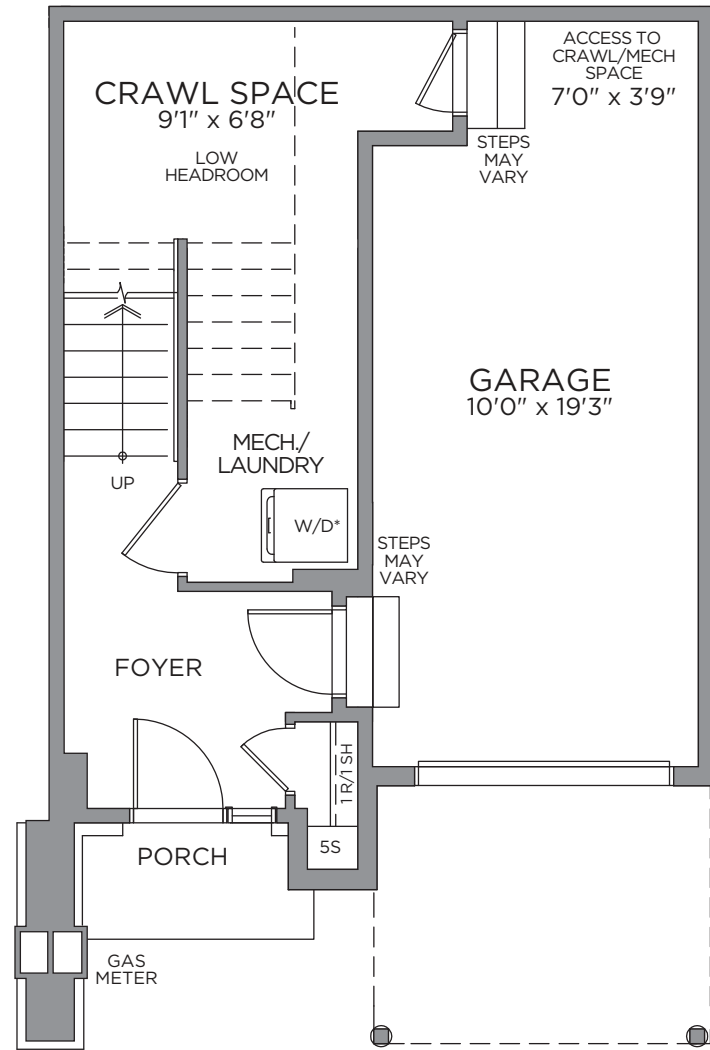
**CITY
TOWNS**
BACK-TO-BACK
TOWNHOMES



ARTIST'S CONCEPT

THE HOLDEN ~ 1,147 SQ. FT.

2 BED | 1.5 BATH



GROUND FLOOR PLAN

SECOND FLOOR PLAN

THIRD FLOOR PLAN

GROUND FLOOR PLAN END UNIT

*Washer and Dryer location for optional third floor plan only. Prices, dimensions and specifications are subject to change without notice. All renderings are artist's concept. E. & O.E. January 1, 2022