

# Designer Finished Homes

# THE HOLDEN

CT3-36 | 1,155 SQ. FT. | 2 BEDS | 2.5 BATHS



Artist's concept. E.&O.E.

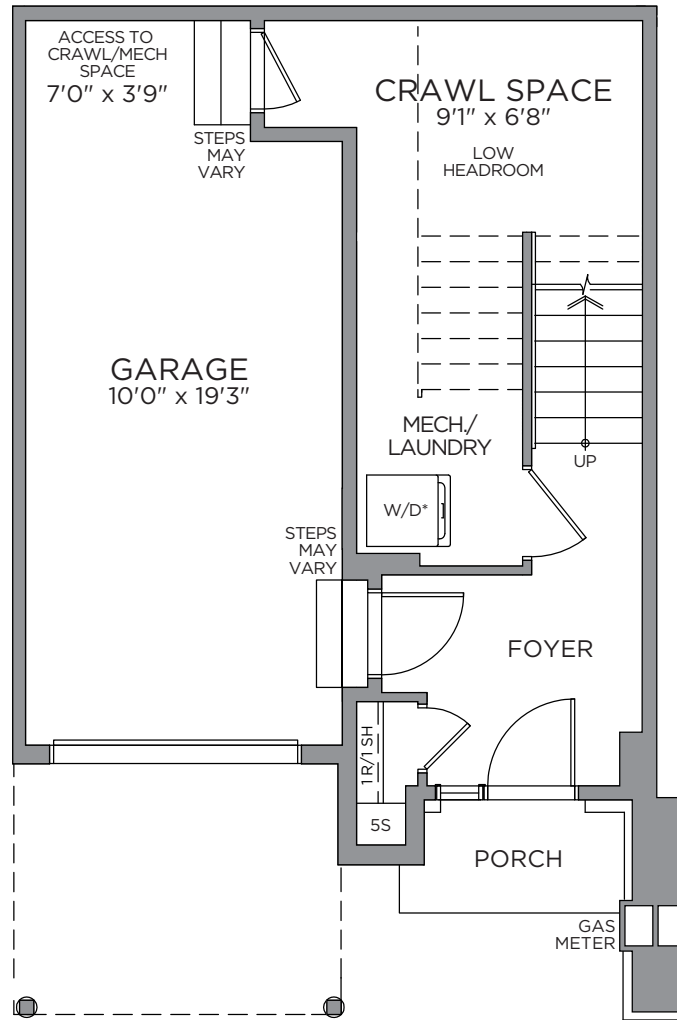


Artist's concept. E.&O.E.

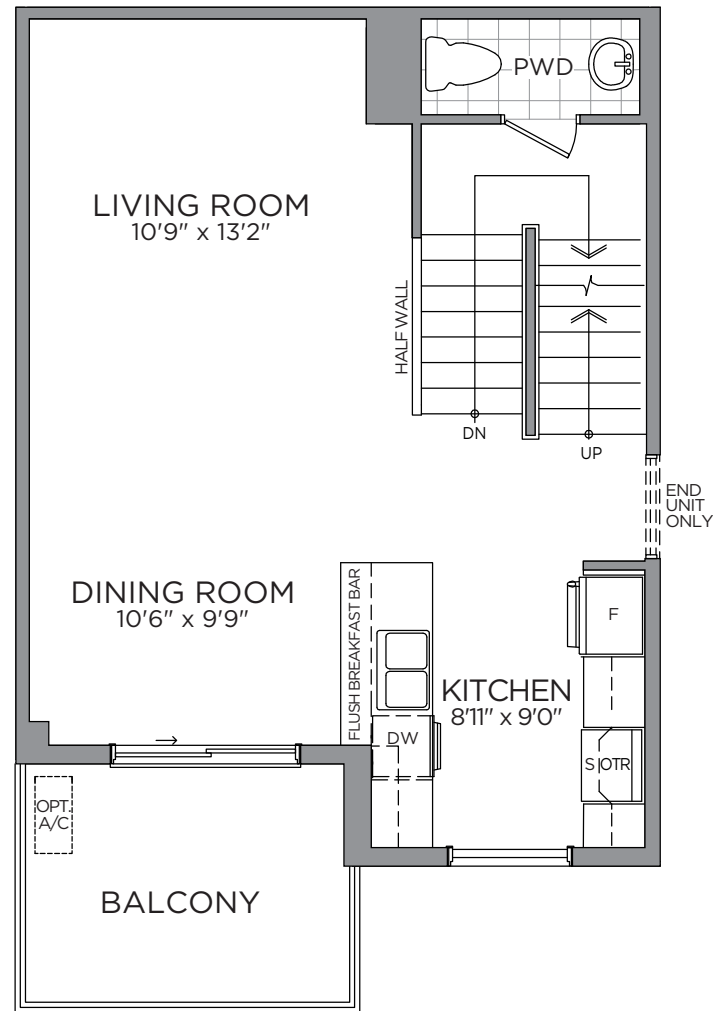
# Designer Finished Homes

## THE HOLDEN

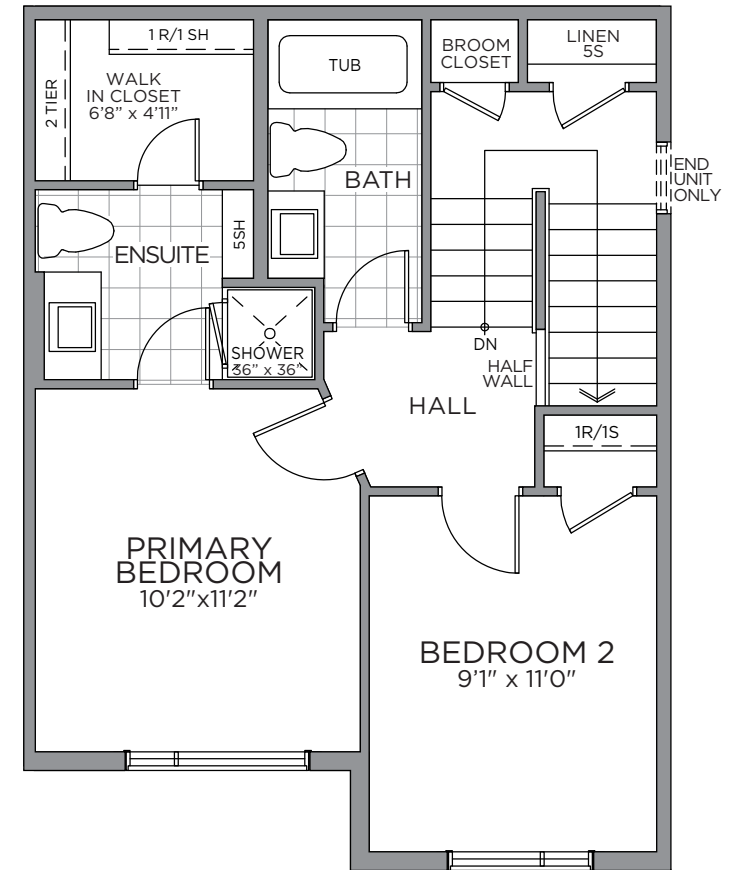
CT3-36 | 1,155 SQ. FT. | 2 BEDS | 2.5 BATHS



GROUND FLOOR



SECOND FLOOR



THIRD FLOOR

\*Washer and Dryer location for optional third floor plan only. Prices, dimensions and specifications are subject to change without notice. All renderings are artist's concept. E. & O.E. April 2024.

# INTERIOR DETAILS

MAKE A GRAND ENTRANCE WITH AN EXQUISITE **DOOR HARDWARE, FLOOR & TRIM PACKAGE**



E.&O.E.

**1**

**MAIN ENTRY**  
Laminate  
Plank Flooring  
- Harbour  
Island

**2**

**LAMINATE  
FLOORING**  
Laminate Plank  
Flooring -  
Harbour Island

**3**

**CARPET**  
Beaulieu  
Sultana II -  
Democracy

**4**

**INTERIOR  
PAINT**  
Benjamin  
Moore OC-  
22 - Calm

**5**

**INTERIOR  
DOOR  
HARDWARE**  
Layton Satin  
Chrome Levers

**6**

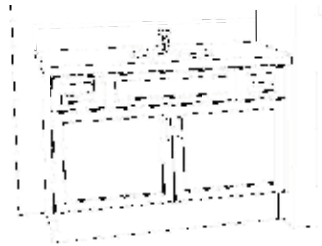
**TRIM PACKAGE**  
MDF Flat (3/8"  
x 3-7/8") / MDF  
(7/16" x 11/16")

**7**

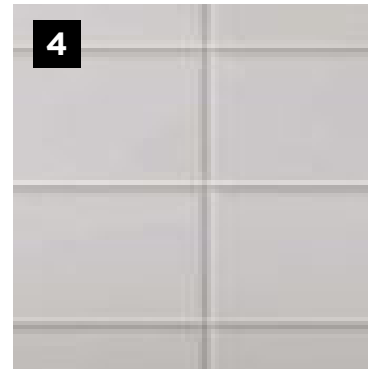
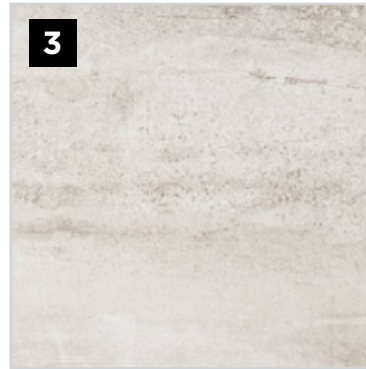
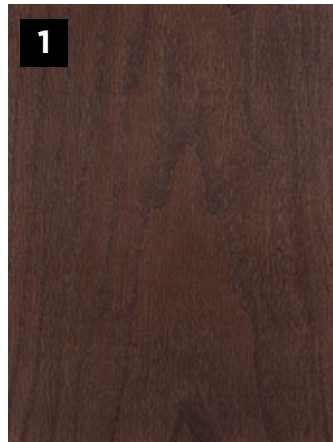
**INTERIOR  
DOORS**  
Cambridge  
2 Panel  
Smooth

# PRIMARY ENSUITE/MAIN BATH

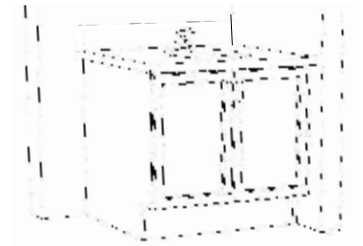
WELL APPOINTED WITH SPA-INSPIRED COMFORTS IN YOUR COZY PRIVATE RETREAT



PRIMARY ENSUITE CABINET LAY-OUT



E.&O.E.



MAIN BATH CABINET LAY-OUT

1

**CABINETRY**  
Polo Oak -  
Elegant

2

**COUNTERTOP**  
Laminate

3

**FLOORING**  
Centura 13x13  
Explorer  
Milan

4

**SHOWER/TUB WALL TILE**  
Ceratec 4x16 Polvere  
Glossy - Horizontally  
Stacked

5

**CABINET  
PULL**  
Chrome

6

**VANITY  
FAUCET**  
Moen Rizon -  
Chrome

7

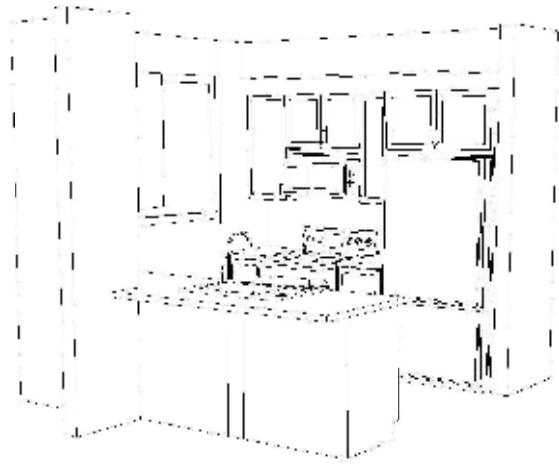
**TUB/SHOWER  
FIXTURE**  
Moen Rizon -  
Chrome

8

**VANITY SINK**  
Contrac  
Reaves Drop-In  
- White

# KITCHEN

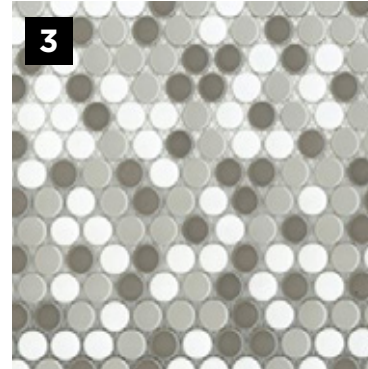
A GREAT RECIPE STARTS WITH A **GOURMET CHEF KITCHEN**



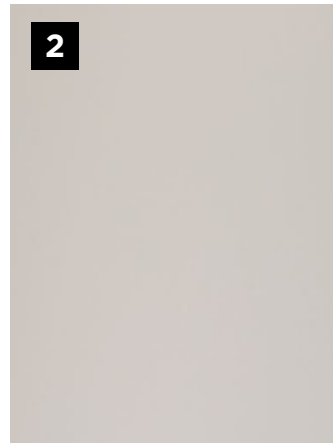
KITCHEN CABINET LAY-OUT



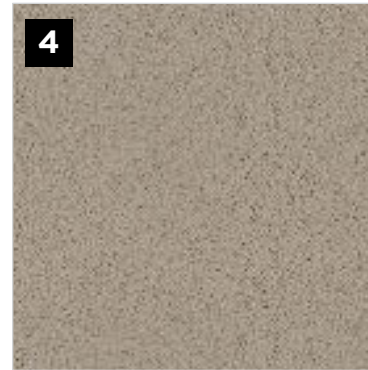
1



3



2



4

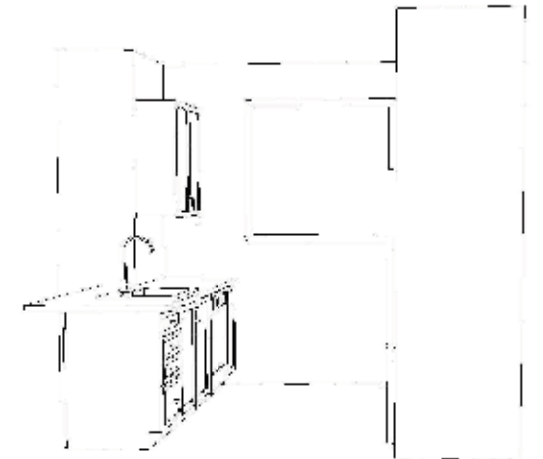


5



6

E.&O.E.



ISLAND CABINET LAY-OUT

1

**KITCHEN SINK**  
Nautika Double  
Bowl Undermount  
- Stainless Steel

2

**DOOR  
PULL**  
Chrome

3

**BACKSPLASH**  
Olympia Penny  
Rounds Taupe/  
Tender Grey/White

4

**COUNTERTOP**  
Silestone  
Quartz - Lena

5

**CABINETRY**  
Mission  
Thermofoil -  
Willow Grey

6

**KITCHEN  
FAUCET**  
Moen Sleek  
- Chrome

# APPLIANCES

ENJOY THE EASE AND LUXURY OF LIFE WITH THE HELP OF **MODERN APPLIANCES**



E.&O.E.

**1**

**WASHER**  
Whirlpool 5.0  
C/F Front  
Load - White

**2**

**DRYER**  
Whirlpool 7.4  
C/F Front  
Load Electric

**3**

**HOOD FAN**  
GE Over-  
the-Range  
Microwave

**4**

**RANGE**  
LG 30"  
Electric  
Smooth Top

**5**

**DISHWASHER**  
LG 24" Built In  
Front Control

**6**

**REFRIGERATOR**  
LG 36" Counter  
Depth French  
Door

To call **Findlay Creek** home, contact your  
**Pathways Sales Consultant** to book an appointment.



**JENNIFER DEAN**  
New Home Sales Consultant  
TEL: 613.822.7247  
EMAIL: [jdean@eqhomes.ca](mailto:jdean@eqhomes.ca)

**PATHWAYS SALES OFFICE:**

122 Dun Skipper Drive, Ottawa, ON, K1X 0G2

All drawings are artist's concept and may vary slightly from the final product. Actual usable floorspace may vary from stated area, and square footage has been calculated based on usable living space according to the TARION rules and does not include garage or unfurnished basement areas. Drawings may show optional features which may not be included in the base price. Bulkheads & box outs may be required as chases for plumbing & mechanical. Garage main door location, if applicable, may vary subject to grade. In an ongoing review of homeowner's needs, changes may have been incorporated into our "New Home Features" and construction techniques. Specifications subject to change without notice. Manufacturers' images are shown and may differ from the final product. E. & O.E. April 2024.

