

# Designer Finished Homes

# THE HOLDEN

CT3-22 | 1,155 SQ. FT. | 2 BEDS | 2.5 BATHS



Artist's concept. E.&O.E.

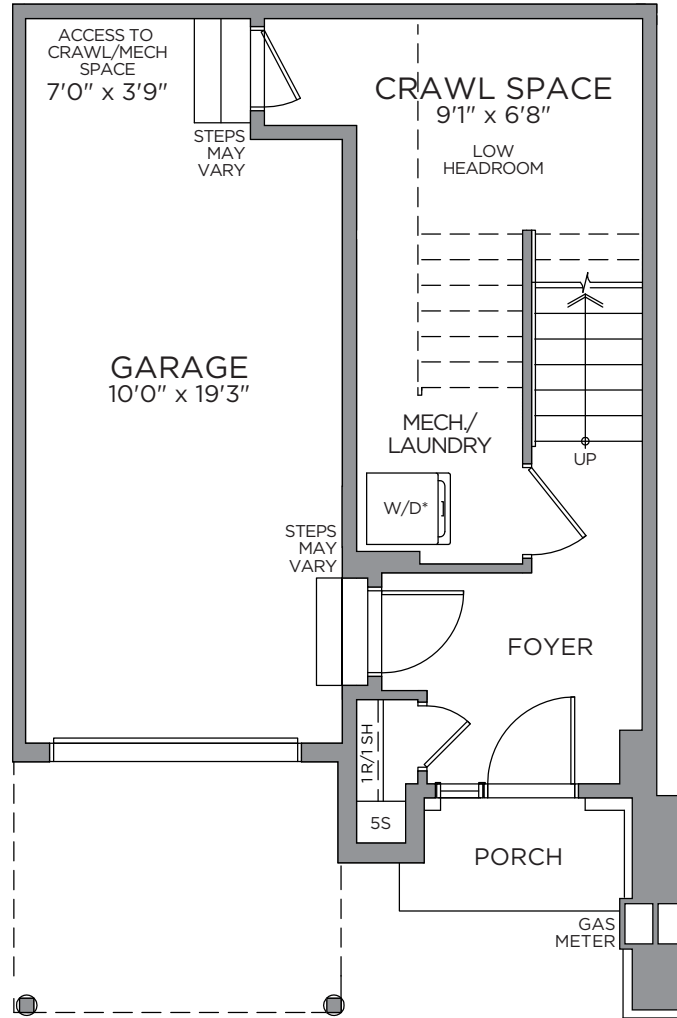


Artist's concept. E.&O.E.

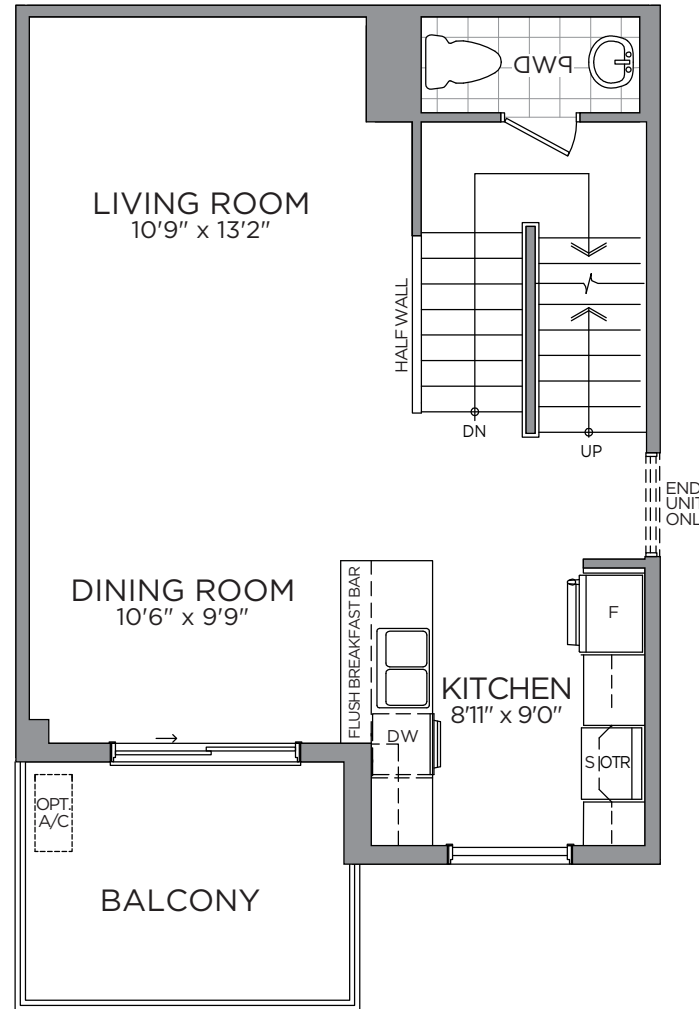
# Designer Finished Homes

## THE HOLDEN

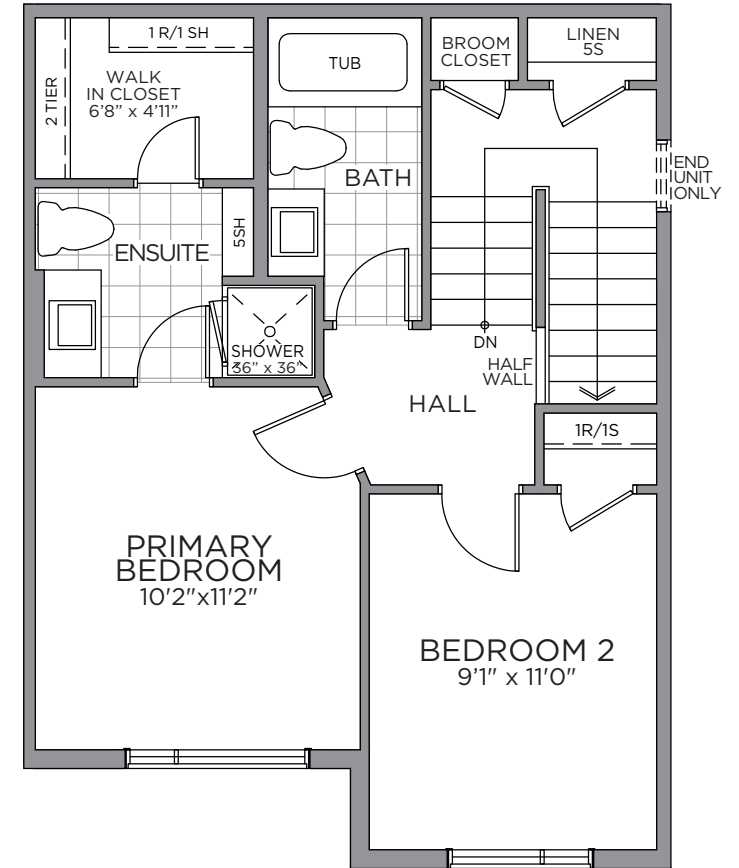
CT3-22 | 1,155 SQ. FT. | 2 BEDS | 2.5 BATHS



GROUND FLOOR



SECOND FLOOR



THIRD FLOOR

\*Washer and Dryer location for optional third floor plan only. Prices, dimensions and specifications are subject to change without notice. All renderings are artist's concept. E. & O.E. April 2024.

# INTERIOR DETAILS

MAKE A GRAND ENTRANCE WITH AN EXQUISITE **DOOR HARDWARE, FLOOR & TRIM PACKAGE**



E.&O.E.

**1**

**MAIN ENTRY**  
Laminate  
Plank Flooring  
- Palm Beach

**2**

**LAMINATE FLOORING**  
Laminate Plank  
Flooring -  
Palm Beach

**3**

**CARPET**  
Beaulieu  
Sultana II -  
Democracy

**4**

**INTERIOR PAINT**  
Benjamin  
Moore OC-  
22 - Calm

**5**

**INTERIOR DOOR HARDWARE**  
Layton Satin  
Chrome Levers

**6**

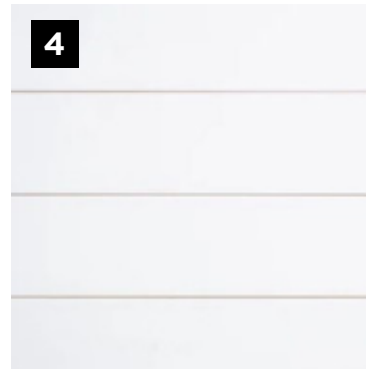
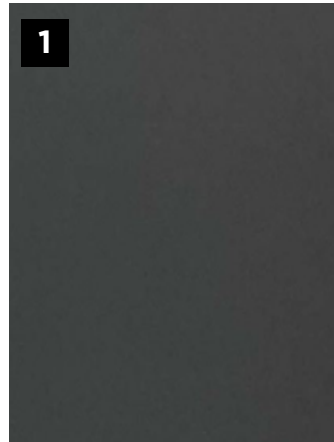
**TRIM PACKAGE**  
MDF Flat (3/8"  
x 3-7/8") / MDF  
(7/16" x 11/16")

**7**

**INTERIOR DOORS**  
Cambridge  
2 Panel  
Smooth

# PRIMARY ENSUITE/MAIN BATH

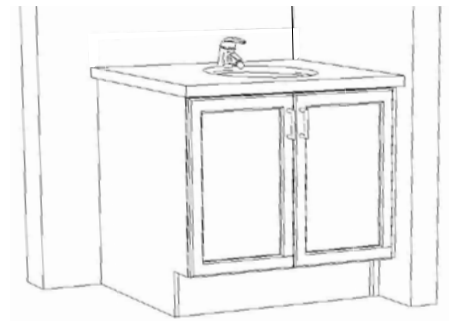
WELL APPOINTED WITH SPA-INSPIRED COMFORTS IN YOUR COZY PRIVATE RETREAT



E.&O.E.



PRIMARY ENSUITE CABINET LAY-OUT



MAIN BATH CABINET LAY-OUT

**1**  
**CABINETRY**  
Como 5/8 -  
Storm

**2**  
**COUNTERTOP**  
Laminate  
- White  
Cascade

**3**  
**FLOORING**  
Centura  
12x12 Giza  
Khafre

**4**  
**SHOWER/TUB WALL TILE**  
Ceratec 4x16 Essential  
Subway Tile - Horizontally  
Stacked - Bianco

**5**  
**CABINET  
PULL**  
Brushed  
Nickel

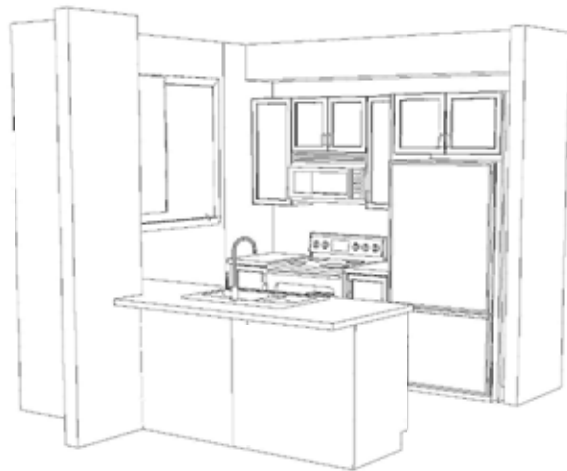
**6**  
**VANITY  
FAUCET**  
Moen Vichy -  
Chrome

**7**  
**TUB/SHOWER  
FIXTURE**  
Moen Vichy -  
Chrome

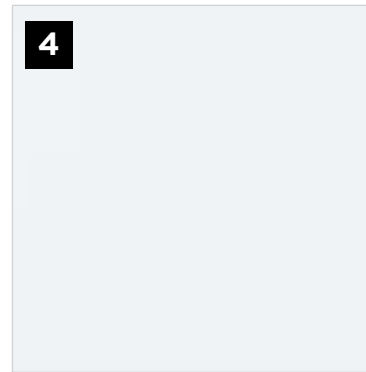
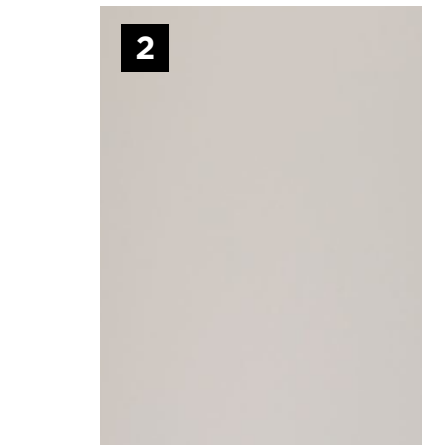
**8**  
**VANITY SINK**  
Contrac  
Reaves Drop-In  
- White

# KITCHEN

A GREAT RECIPE STARTS WITH A **GOURMET CHEF KITCHEN**



KITCHEN CABINET LAY-OUT



E.&O.E.



ISLAND CABINET LAY-OUT

**1**

**KITCHEN SINK**  
Nautika Double  
Bowl Undermount  
- Stainless Steel

**2**

**DOOR  
PULL**  
Matte  
Black

**3**

**BACKSPLASH**  
Ceratec  
3x11 Rewind  
Argilla

**4**

**COUNTERTOP**  
Silestone  
Quartz - Miami  
White

**5**

**CABINETRY**  
Metro  
Thermofoil -  
Willow Grey

**6**

**KITCHEN  
FAUCET**  
Moen Sleek -  
Stainless Steel

# APPLIANCES

ENJOY THE EASE AND LUXURY OF LIFE WITH THE HELP OF **MODERN APPLIANCES**



E.&O.E.

**1**

## WASHER

Whirlpool 5.0  
C/F Front  
Load - White

**2**

## DRYER

Whirlpool 7.4  
C/F Front  
Load Electric

**3**

## HOOD FAN

GE Over-  
the-Range  
Microwave

**4**

## RANGE

LG 30"  
Electric  
Smooth Top

**5**

## DISHWASHER

LG 24" Built In  
Front Control

**6**

## REFRIGERATOR

LG 36" Counter  
Depth French  
Door

To call **Findlay Creek** home, contact your  
**Pathways Sales Consultant** to book an appointment.



**JENNIFER DEAN**  
New Home Sales Consultant  
TEL: 613.822.7247  
EMAIL: [jdean@eqhomes.ca](mailto:jdean@eqhomes.ca)

**PATHWAYS SALES OFFICE:**

122 Dun Skipper Drive, Ottawa, ON, K1X 0G2

All drawings are artist's concept and may vary slightly from the final product. Actual usable floorspace may vary from stated area, and square footage has been calculated based on usable living space according to the TARION rules and does not include garage or unfurnished basement areas. Drawings may show optional features which may not be included in the base price. Bulkheads & box outs may be required as chases for plumbing & mechanical. Garage main door location, if applicable, may vary subject to grade. In an ongoing review of homeowner's needs, changes may have been incorporated into our "New Home Features" and construction techniques. Specifications subject to change without notice. Manufacturers' images are shown and may differ from the final product. E. & O.E. April 2024.

