



**THE GRAYSON**  
3/4 BEDROOM ~ 1,579 SQ. FT.

**MODERN  
TOWNS**



ELEVATION A

ARTIST'S CONCEPT

\*\*\*Bold square footage indicates finishes space in basement is included.

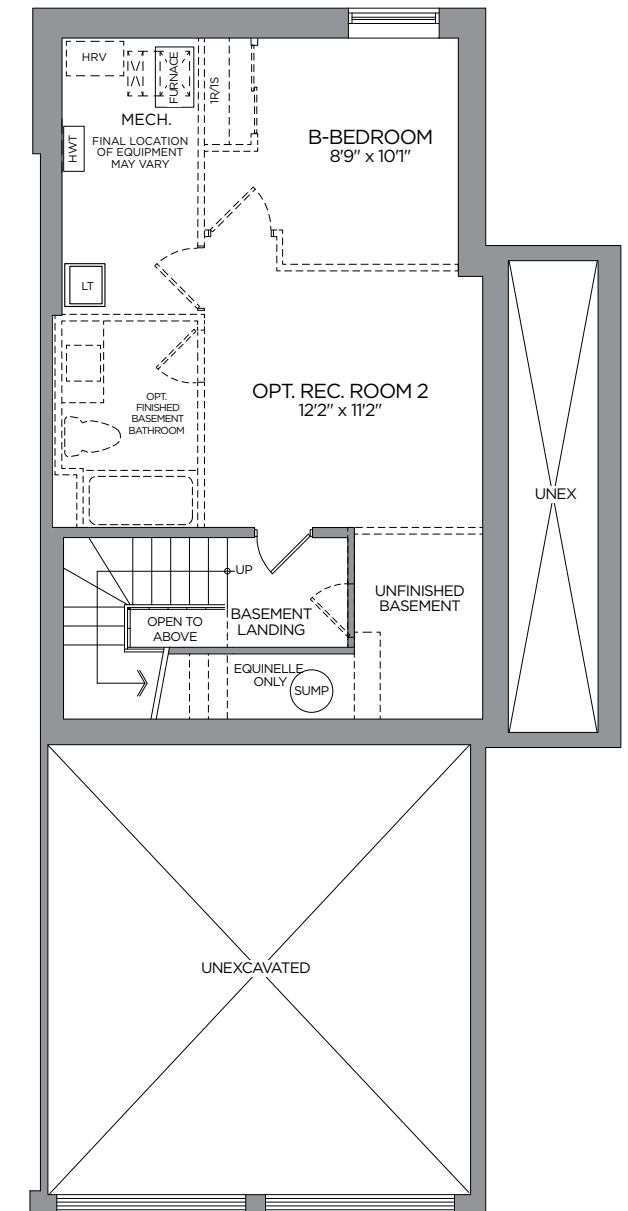
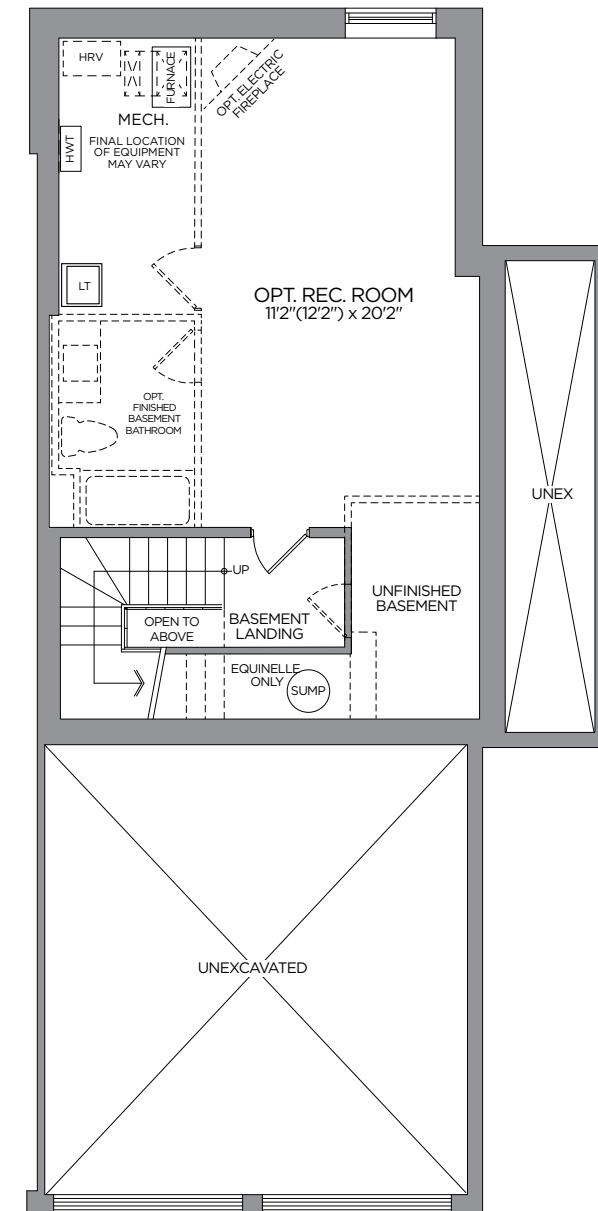
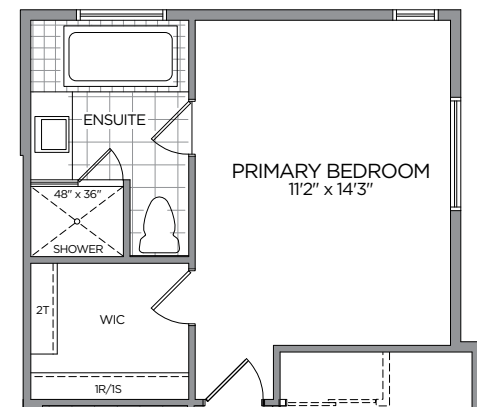
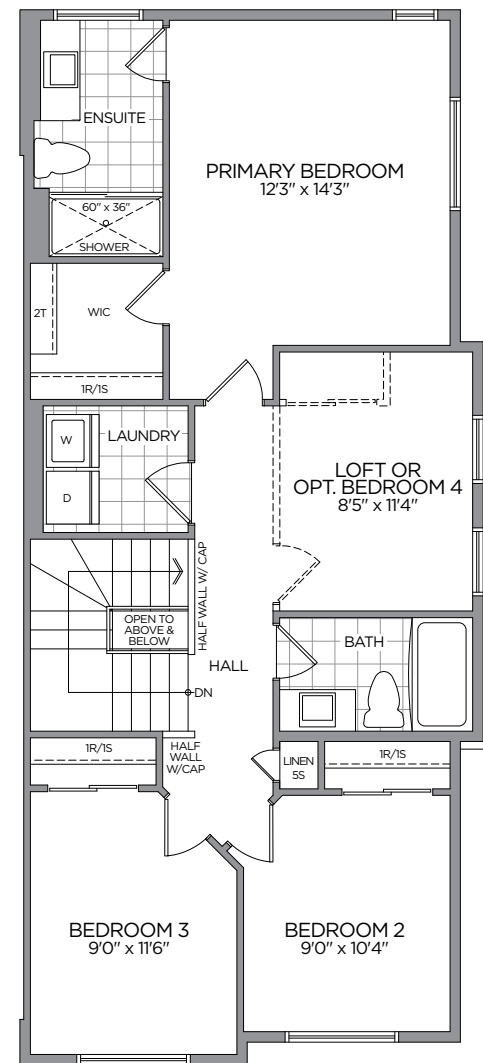
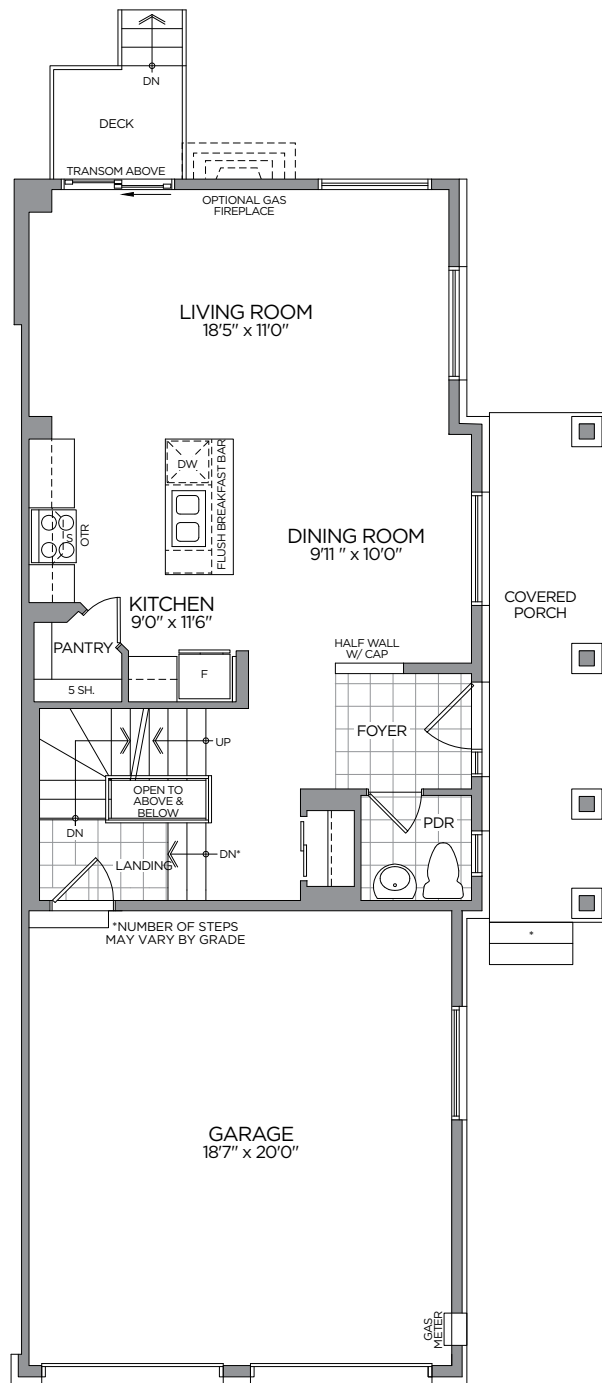
# MODERN TOWNS

## THE GRAYSON ~ 1,579 SQ. FT.

1,882 SQ. FT. with Optional Finished Basement Recreation Room  
 1,882 SQ. FT. with Optional Finished Basement Bedroom & Recreation Room 2



ELEVATION A



\*Front window and porch sizing/locations vary based on elevations, see agent for detailed drawings. \*\* Sump pump is for eQuinelle only. Prices, dimensions and specifications are subject to change without notice. All renderings are artist's concept. E. & O.E. June 2023

