

Designer Finished Homes

# THE CLEMENTINE (END)

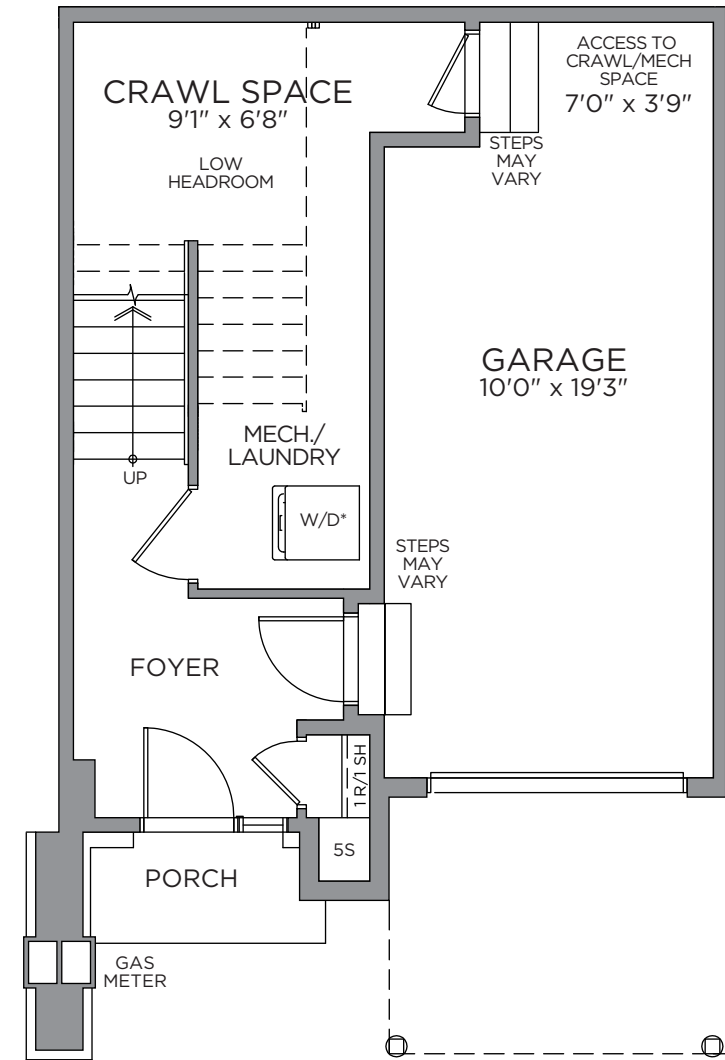
CT4-25 | 1,147 SQ. FT. | 2 BEDS | 2.5 BATHS



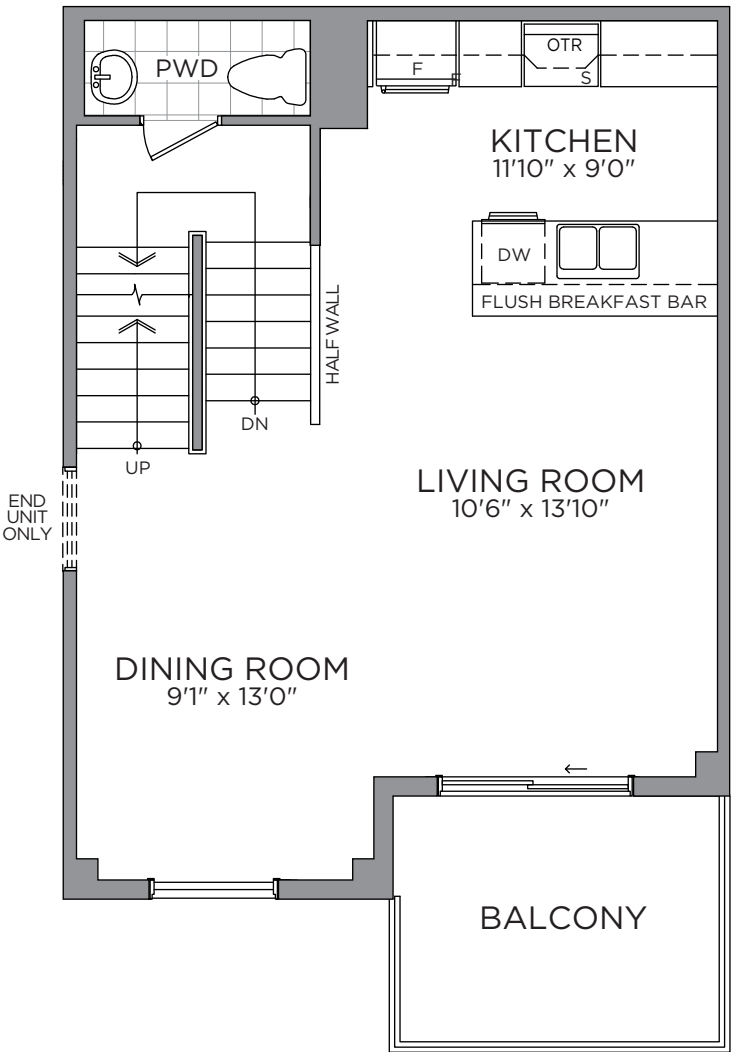
Designer Finished Homes

THE CLEMENTINE (END)

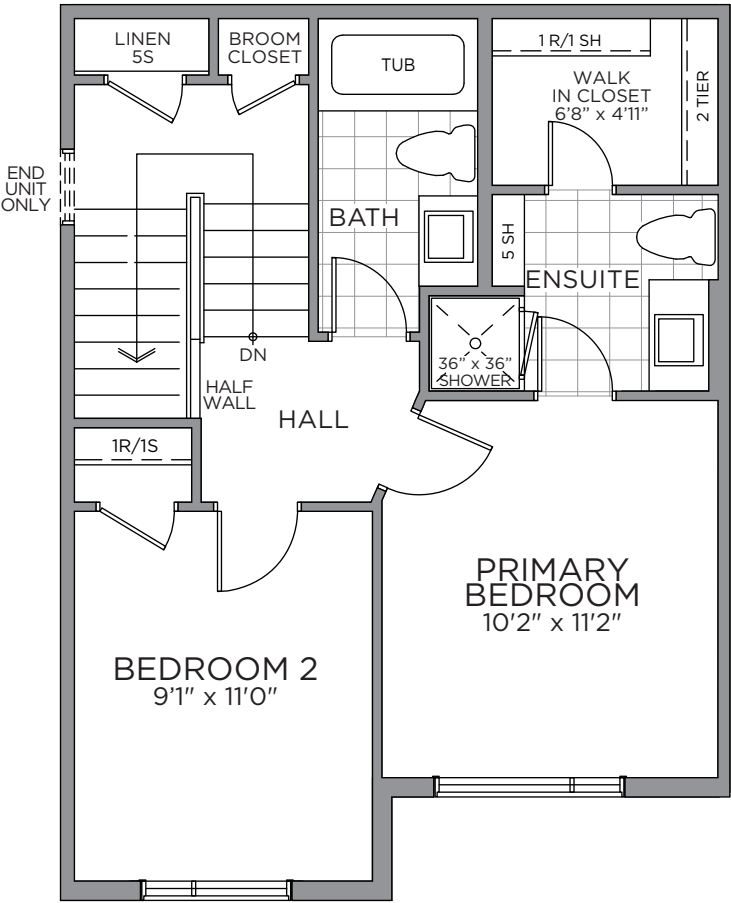
CT4-25 | 1,147 SQ. FT. | 2 BEDS | 2.5 BATHS



GROUND FLOOR



SECOND FLOOR



THIRD FLOOR

\*Washer and Dryer location for optional third floor plan only. Prices, dimensions and specifications are subject to change without notice. All renderings are artist's concept. E. & O.E. February 2024.

# INTERIOR DETAILS

MAKE A GRAND ENTRANCE WITH AN EXQUISITE **DOOR HARDWARE, FLOOR & TRIM PACKAGE**



E.&O.E.

1

**MAIN ENTRY**  
Standard  
Laminate Plank  
Flooring - Dubal  
2662 - Bathsheba

2

**LAMINATE  
FLOORING**  
Standard Laminate  
Plank Flooring - Dubal  
2662 - Bathsheba

3

**CARPET**  
Beaulieu  
Sultana II  
- Windsor  
Grey

4

**INTERIOR  
PAINT**  
Benjamin  
Moore OC-  
22 - Calm

5

**INTERIOR  
DOOR  
HARDWARE**  
Layton Satin  
Chrome Levers

6

**TRIM PACKAGE**  
MDF Flat Stock  
(3/8" x 3-7/8").  
MDF (7/16" x  
11/16")

7

**INTERIOR  
DOORS**  
Cambridge  
2 Panel  
Smooth

# PRIMARY ENSUITE/MAIN BATH

WELL APPOINTED WITH SPA-INSPIRED COMFORTS IN YOUR COZY PRIVATE RETREAT



1

**CABINETRY**  
Polo Oak -  
Ebony

2

**COUNTERTOP**  
Laminate  
5003-38  
White Cascade

3

**FLOORING**  
Centura 12x12  
Explorer  
London

4

**SHOWER/TUB WALL TILE**  
Ceratec 4x16 Essential  
Subway Tile - Horizontally  
Stacked - Bianco

5

**DOOR PULL**  
Standard  
HU65 -  
Chrome

6

**VANITY FAUCET**  
Moen Chateau  
L4621 - Chrome

7

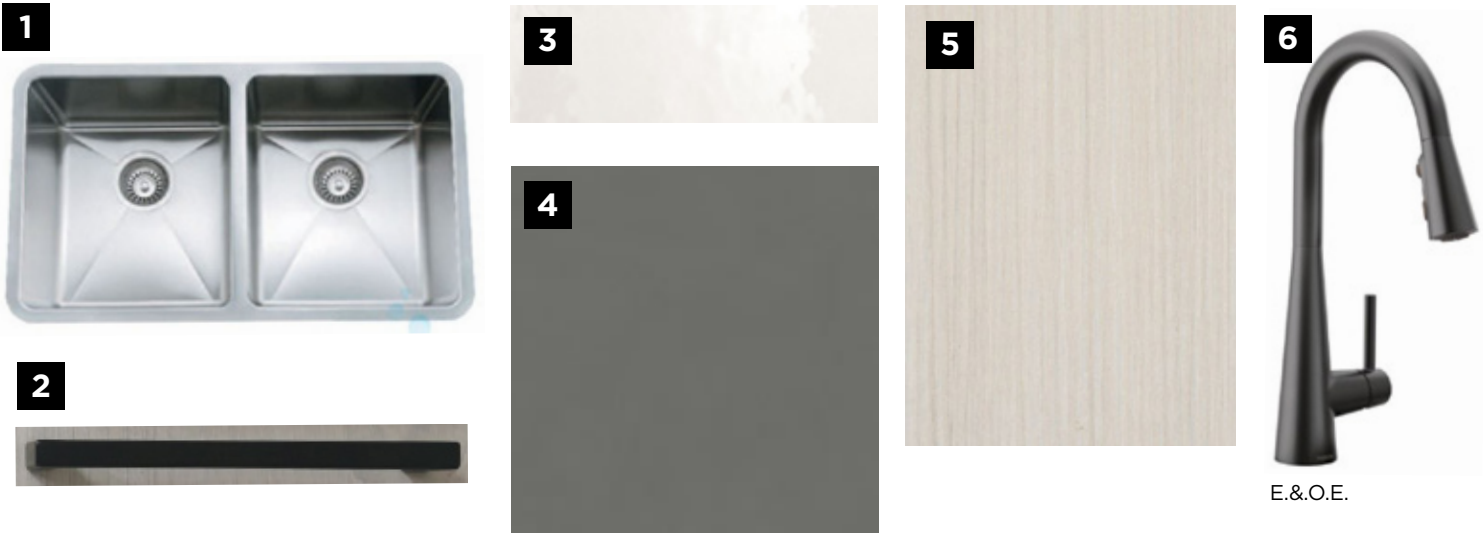
**TUB/SHOWER  
FIXTURE**  
Moen Chateau  
TL183 - Chrome

8

**VANITY SINK**  
Contrac  
Reaves Drop-  
in - White

# KITCHEN

A GREAT RECIPE STARTS WITH A **GOURMET CHEF KITCHEN**



E.&O.E.

1

**KITCHEN SINK**  
Bristol B1807 Double  
Bowl Undermount  
Sink - Stainless Steel

2

**DOOR PULL**  
Standard  
HU64 - Black  
Matte

3

**BACKSPLASH**  
Centura Artisan  
2.5x8 White - 1/3  
Offset - White

4

**COUNTERTOP**  
Silestone  
Quartz - Grey  
Expo

5

**CABINETRY**  
Como 3/4  
Melamine -  
Larice Bianco

6

**KITCHEN FAUCET**  
Moen Sleek  
7864BL - Black  
Matte

# APPLIANCES

ENJOY THE EASE AND LUXURY OF LIFE WITH THE HELP OF **MODERN APPLIANCES**



**1**

**WASHER**

Whirlpool - 5.0  
cu. ft. Front Load  
Washer - White

**2**

**DRYER**

Whirlpool - 7.4  
cu. ft. Front Load  
Electric Dryer

**3**

**HOOD FAN**

Base Package GE  
Over-the-Range  
Microwave

**4**

**RANGE**

LG - 30"  
Electric Smooth  
Top Range

**5**

**DISHWASHER**

LG - 24" Built In  
Front Control  
Dishwasher

**6**

**REFRIGERATOR**

LG - 36" Counter  
Depth French  
Door Fridge

To call **Findlay Creek** home, contact your  
**Pathways Sales Consultant** to book an appointment.



**JENNIFER DEAN**  
New Home Sales Consultant  
TEL: 613.822.7247  
EMAIL: [jdean@eqhomes.ca](mailto:jdean@eqhomes.ca)



**CLAUDIA WARNER-JACOBS**  
New Home Sales Consultant  
TEL: 613.822.7247  
EMAIL: [CWarnerJacobs@eqhomes.ca](mailto:CWarnerJacobs@eqhomes.ca)

**PATHWAYS SALES OFFICE:**  
122 Dun Skipper Drive, Ottawa, ON, K1X 0G2

All drawings are artist's concept and may vary slightly from the final product. Actual usable floorspace may vary from stated area, and square footage has been calculated based on usable living space according to the TARION rules and does not include garage or unfurnished basement areas. Drawings may show optional features which may not be included in the base price. Bulkheads & box outs may be required as chases for plumbing & mechanical. Garage main door location, if applicable, may vary subject to grade. In an ongoing review of homeowner's needs, changes may have been incorporated into our "New Home Features" and construction techniques. Specifications subject to change without notice. Manufacturers' images are shown and may differ from the final product. E. & O.E. February 2024.

