

Designer Finished Homes

THE CLEMENTINE

CT3-35 | 1,155 SQ. FT. | 2 BEDS | 2.5 BATHS



Artist's concept. E.&O.E.

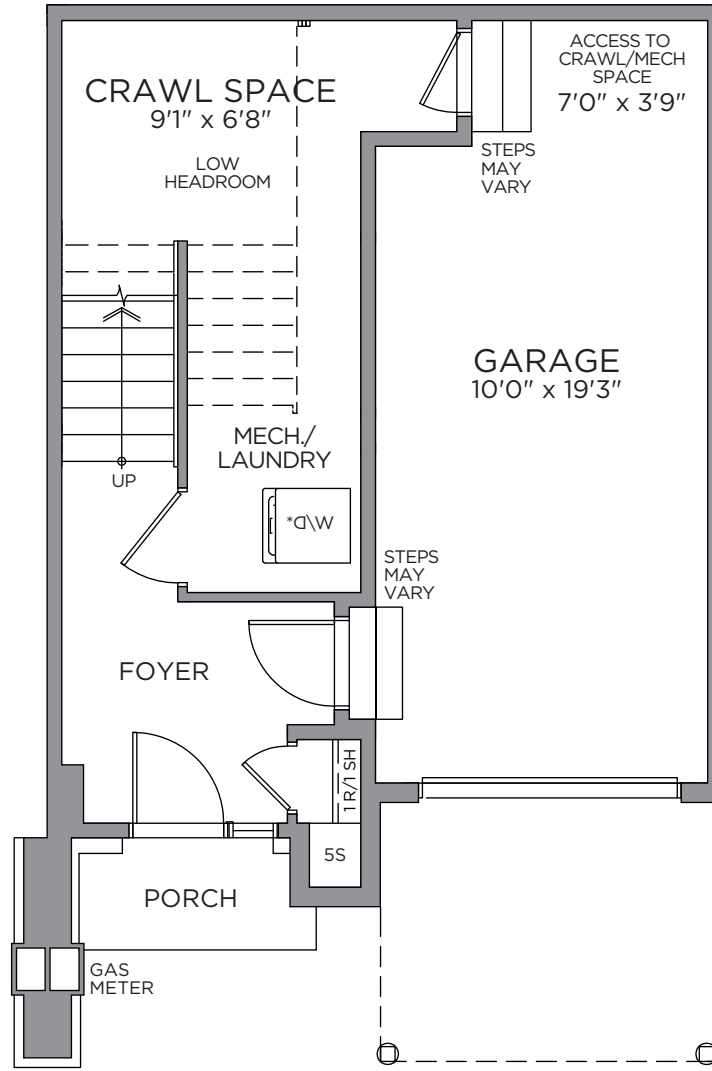


Artist's concept. E.&O.E.

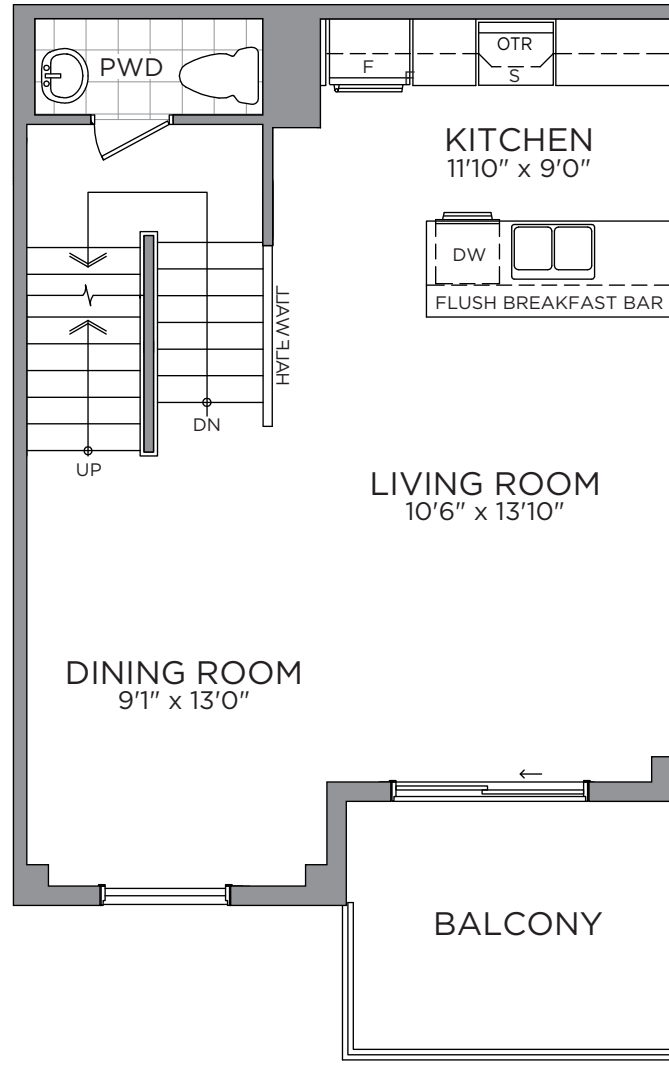
Designer Finished Homes

THE CLEMENTINE

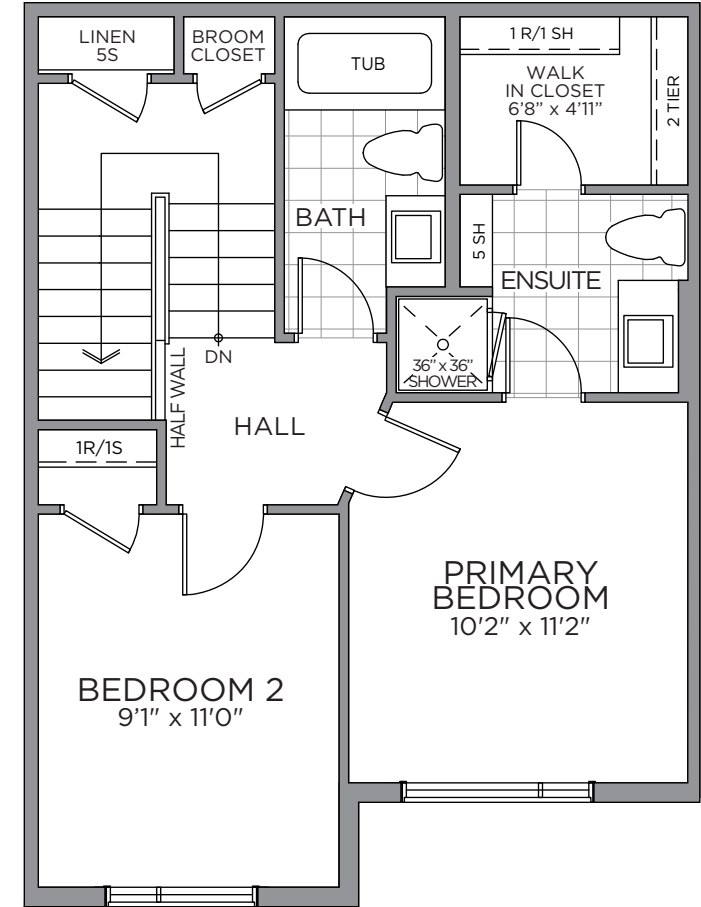
CT3-35 | 1,155 SQ. FT. | 2 BEDS | 2.5 BATHS



GROUND FLOOR



SECOND FLOOR

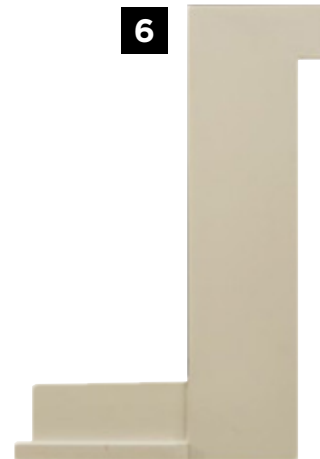
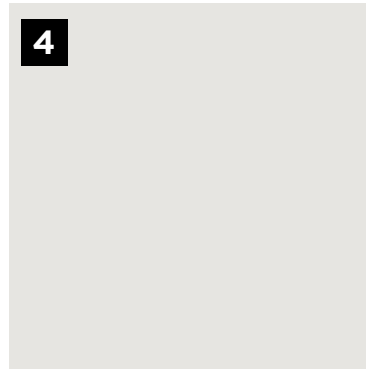
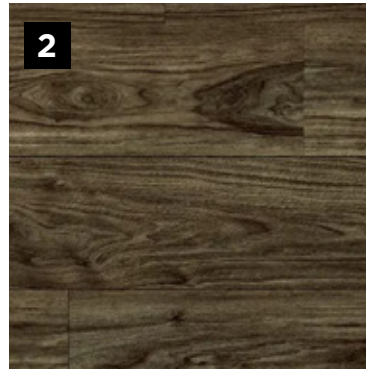
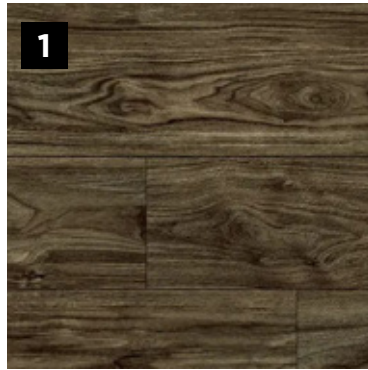


THIRD FLOOR

*Washer and Dryer location for optional third floor plan only. Prices, dimensions and specifications are subject to change without notice. All renderings are artist's concept. E. & O.E. April 2024.

INTERIOR DETAILS

MAKE A GRAND ENTRANCE WITH AN EXQUISITE **DOOR HARDWARE, FLOOR & TRIM PACKAGE**



E.&O.E.

1

MAIN ENTRY
Laminate
Plank
Flooring -
Sunset

2

**LAMINATE
FLOORING**
Laminate
Plank Flooring
- Sunset

3

CARPET
Beaulieu
Coronet
- Mystic
Beige

4

**INTERIOR
PAINT**
Benjamin
Moore OC-
22 - Calm

5

**INTERIOR
DOOR
HARDWARE**
Layton Satin
Chrome Levers

6

TRIM PACKAGE
MDF Flat Stock
(3/8" x 3-7/8")
/ MDF (7/16" x
11/16")

7

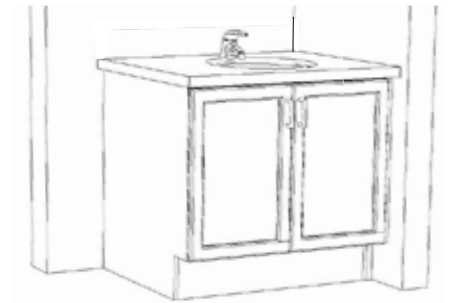
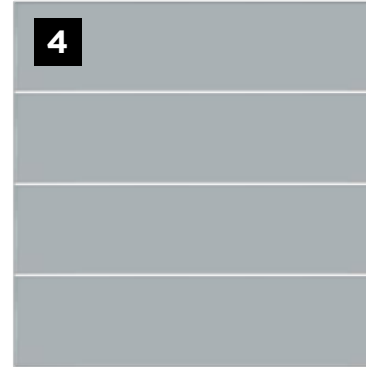
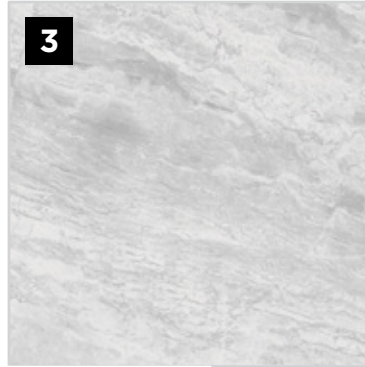
**INTERIOR
DOORS**
Cambridge
2 Panel
Smooth

PRIMARY ENSUITE/MAIN BATH

WELL APPOINTED WITH SPA-INSPIRED COMFORTS IN YOUR COZY PRIVATE RETREAT



PRIMARY ENSUITE CABINET LAY-OUT



MAIN BATH CABINET LAY-OUT



E.&O.E.

1
CABINETRY
Mission
Thermofoil -
Satin White

2
COUNTERTOP
Laminate

3
FLOORING
Centura 13x13
Jefferson
White

4
SHOWER/TUB WALL TILE
Euro 4x16 Soho Cloud
Blue Matte - Horizontally
Stacked

5
CABINETRY PULL
Chrome

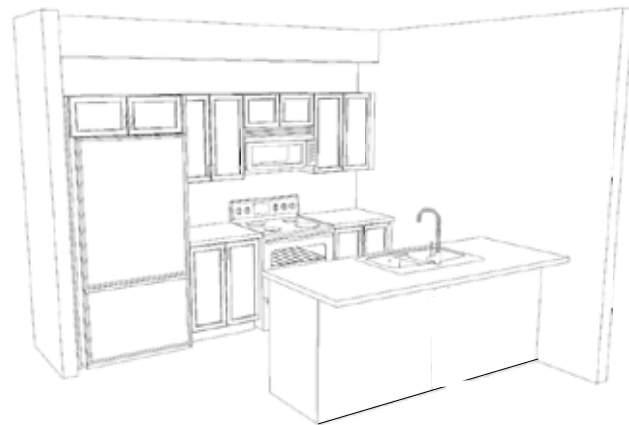
6
VANITY FAUCET
Moen Chateau
- Chrome

7
TUB/SHOWER FIXTURE
Moen Chateau
- Chrome

8
VANITY SINK
Contrac
Reaves Drop-In
- White

KITCHEN

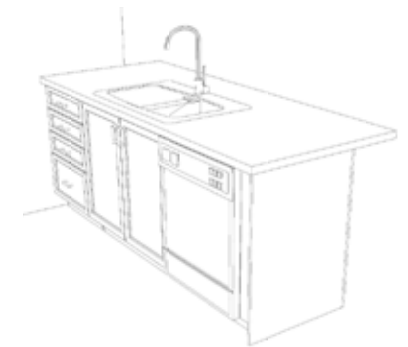
A GREAT RECIPE STARTS WITH A **GOURMET CHEF KITCHEN**



KITCHEN CABINET LAY-OUT



E.&O.E.



ISLAND CABINET LAY-OUT

1

KITCHEN SINK
Nautika Double
Bowl Undermount
- Stainless Steel

2

CABINETRY
Soho MDF -
Symphony
Blue

3

BACKSPLASH
Olympia Colour
And Dimensions
Arctic White 3x6

4

COUNTERTOP
Silestone
Quartz -
Ethereal Dusk

5

**CABINETRY
PULL**
Brushed
Nickel

6

**KITCHEN
FAUCET**
Moen Sleek -
Stainless Steel

APPLIANCES

ENJOY THE EASE AND LUXURY OF LIFE WITH THE HELP OF **MODERN APPLIANCES**



E.&O.E.

1

WASHER

Whirlpool - 5.0
C/F Front Load
Washer - White

2

DRYER

Whirlpool -
7.4 C/F Front
Load Electric

3

HOOD FAN

GE Over-
the-Range
Microwave

4

RANGE

LG - 30"
Electric Smooth
Top Range

5

DISHWASHER

LG - 24"
Built In Front
Control

6

REFRIGERATOR

LG - 36"
Counter Depth
French Door

To call **Findlay Creek** home, contact your
Pathways Sales Consultant to book an appointment.



JENNIFER DEAN
New Home Sales Consultant
TEL: 613.822.7247
EMAIL: jdean@eqhomes.ca

PATHWAYS SALES OFFICE:

122 Dun Skipper Drive, Ottawa, ON, K1X 0G2

All drawings are artist's concept and may vary slightly from the final product. Actual usable floorspace may vary from stated area, and square footage has been calculated based on usable living space according to the TARION rules and does not include garage or unfurnished basement areas. Drawings may show optional features which may not be included in the base price. Bulkheads & box outs may be required as chases for plumbing & mechanical. Garage main door location, if applicable, may vary subject to grade. In an ongoing review of homeowner's needs, changes may have been incorporated into our "New Home Features" and construction techniques. Specifications subject to change without notice. Manufacturers' images are shown and may differ from the final product. E. & O.E. April 2024.

