



THE ATTICUS

3/4 BEDROOM ~ 1,878 SQ. FT.
WITH 331 SQ. FT. FINISHED BASEMENT

**2-STOREY
TOWNS**



ELEVATION A

ARTIST'S CONCEPT

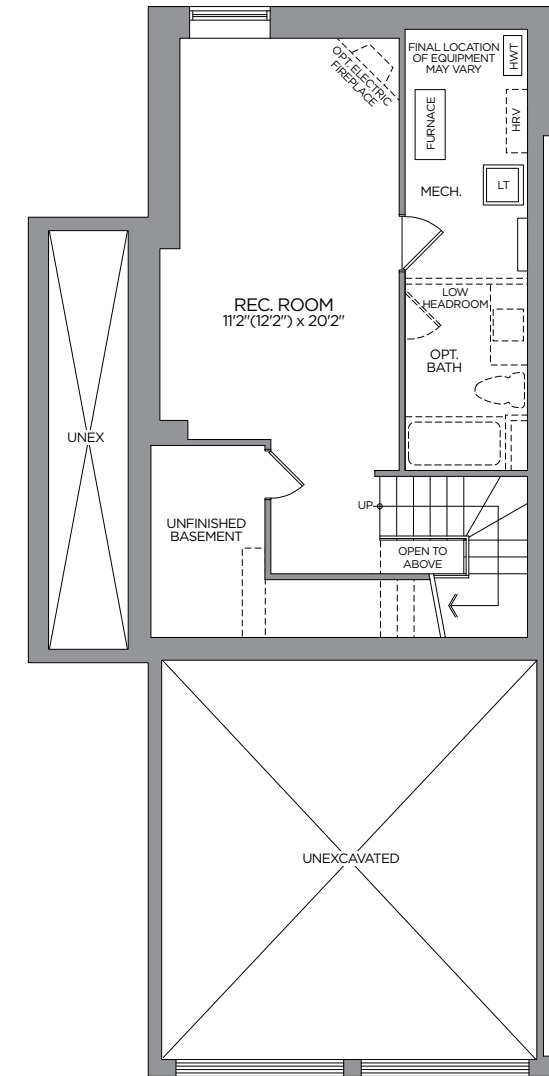
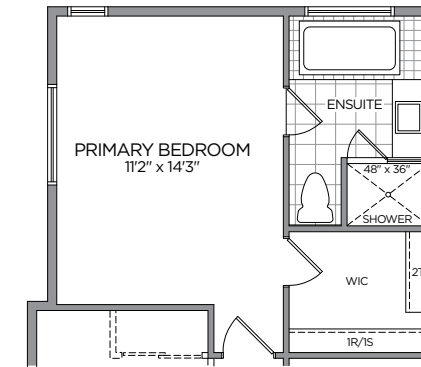
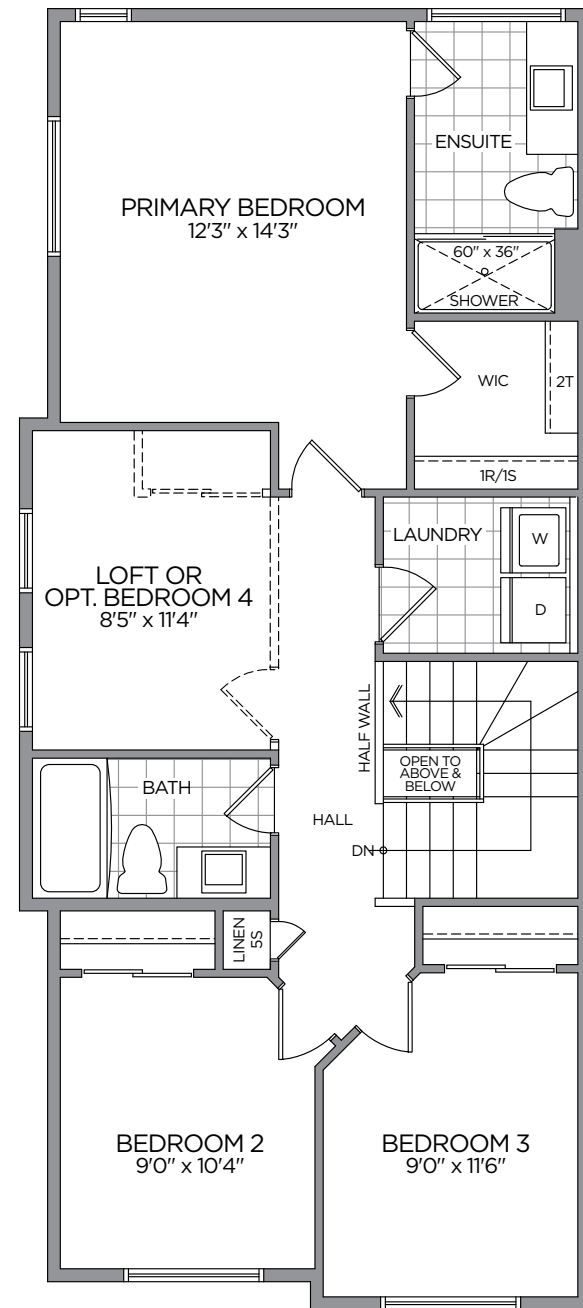
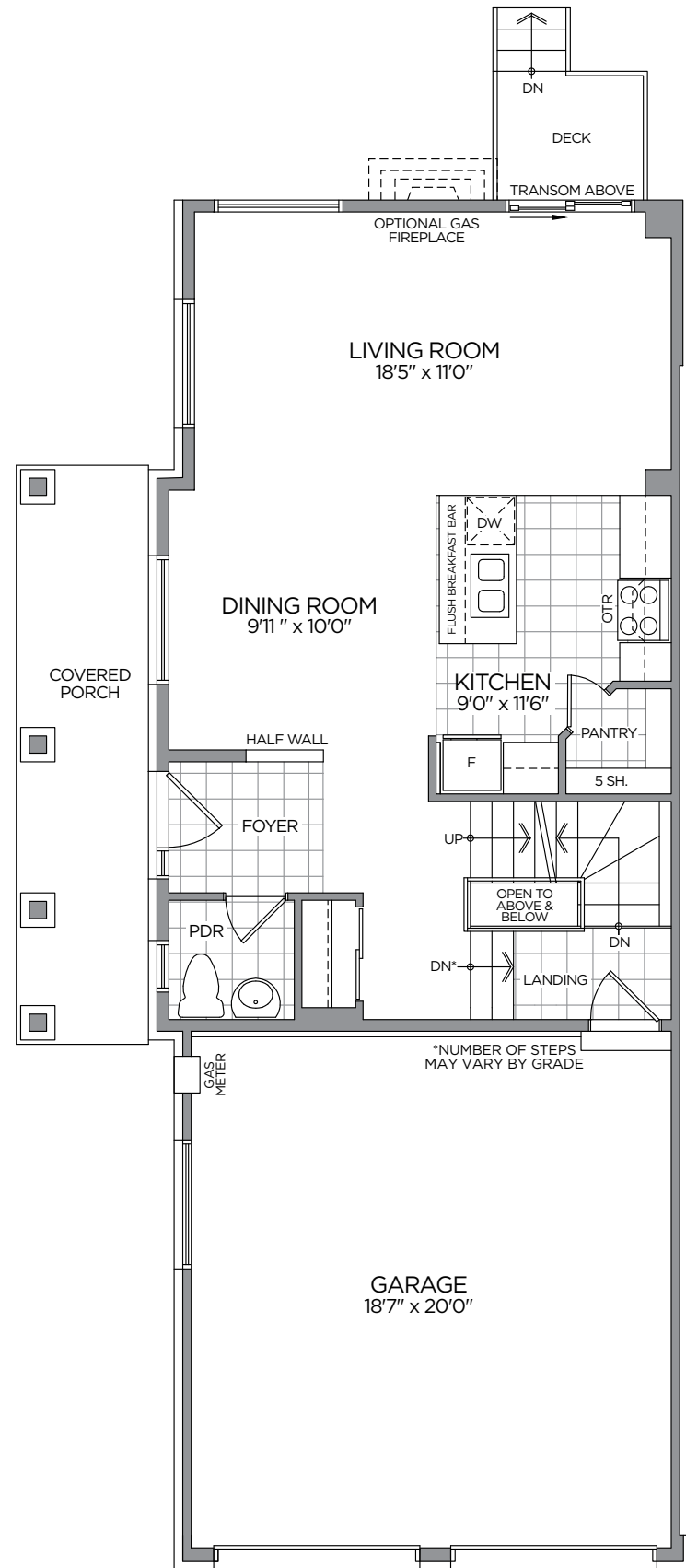
**2-STOREY
TOWNS**

THE ATTICUS ~ 1,878 SQ. FT.

WITH 331 SQ. FT. FINISHED BASEMENT



ELEVATION A



*Front window and porch sizing/locations vary based on elevations, see agent for detailed drawings. ** Sump pump is for eQuinelle only. Prices, dimensions and specifications are subject to change without notice. All renderings are artist's concept. E. & O.E. December 2022

