



Designer Finished Homes

THE QUENTIN

1,920 SQ.FT. + 468 SQ.FT. (FINISHED BASEMENT)





The Quentin is a contemporary, yet warm and family-friendly home. This architecturally-striking two-storey detached home is 1,920 sq.ft. Featuring three large bedrooms, the primary bedroom boasts a luxurious ensuite adorned with modern black fixtures, dramatic flooring and Quartz countertops. With an entertain-ready kitchen and 468-sq.ft. finished basement, you can invite family and friends over anytime. All of the living and dining spaces are bright and fresh with a neutral design palette, allowing you to add accent décor and personalized touches throughout.



ELEVATION F

Artist's concept. E.&O.E.

DESIGNER FINISHED HOME

A Designer Finished Home means it's a quick move-in that includes show-stopping features and finishes expertly selected for their timeless beauty. Our award-winning design team hand selected all of the features and finishes boasting a harmonious blend of the finest interior appointments.

MEET THE DESIGNER BEHIND THE HOME



EMMA ROTONDO
eQ Design Consultant

“

Contemporary but warm & family friendly. Black fixtures & straight lines. Bright fresh & neutral which allows you to add your own design style.

”





Designer Finished Homes

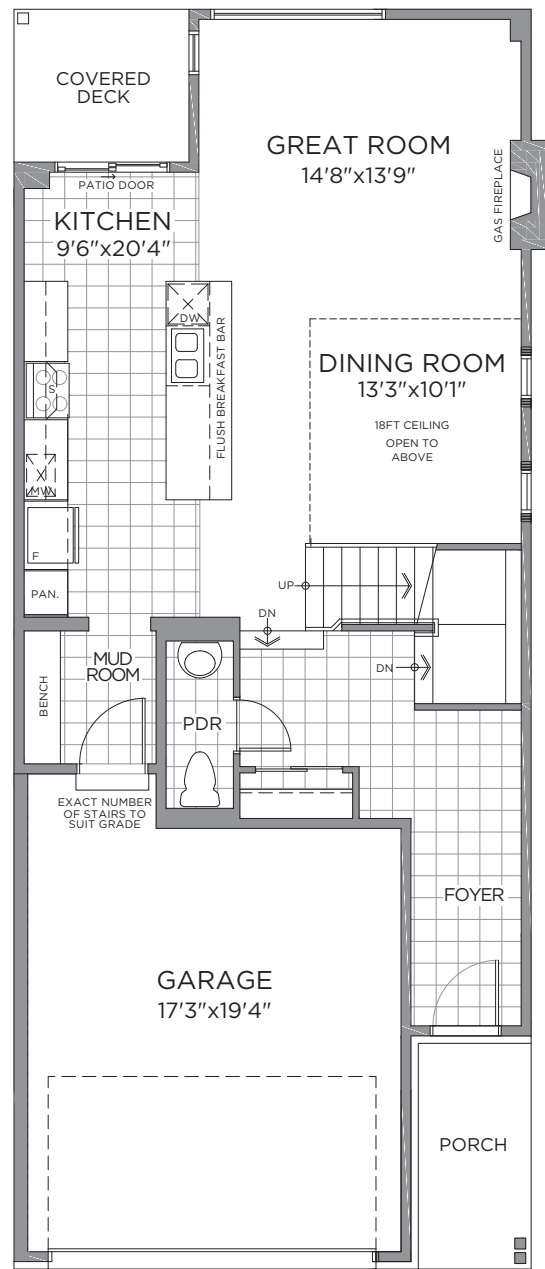
THE QUENTIN

1,920 SQ.FT. + 468 SQ.FT.

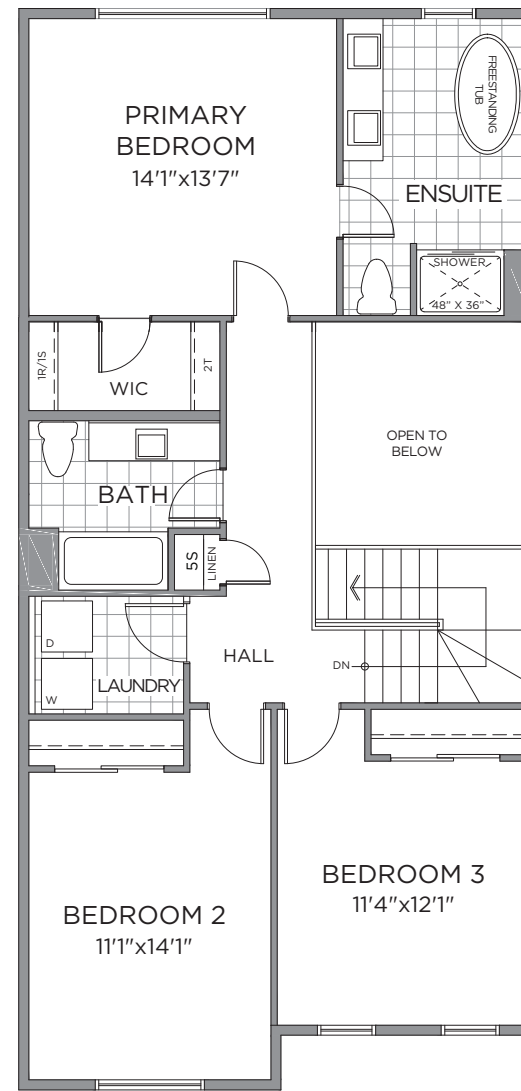
(FINISHED BASEMENT)



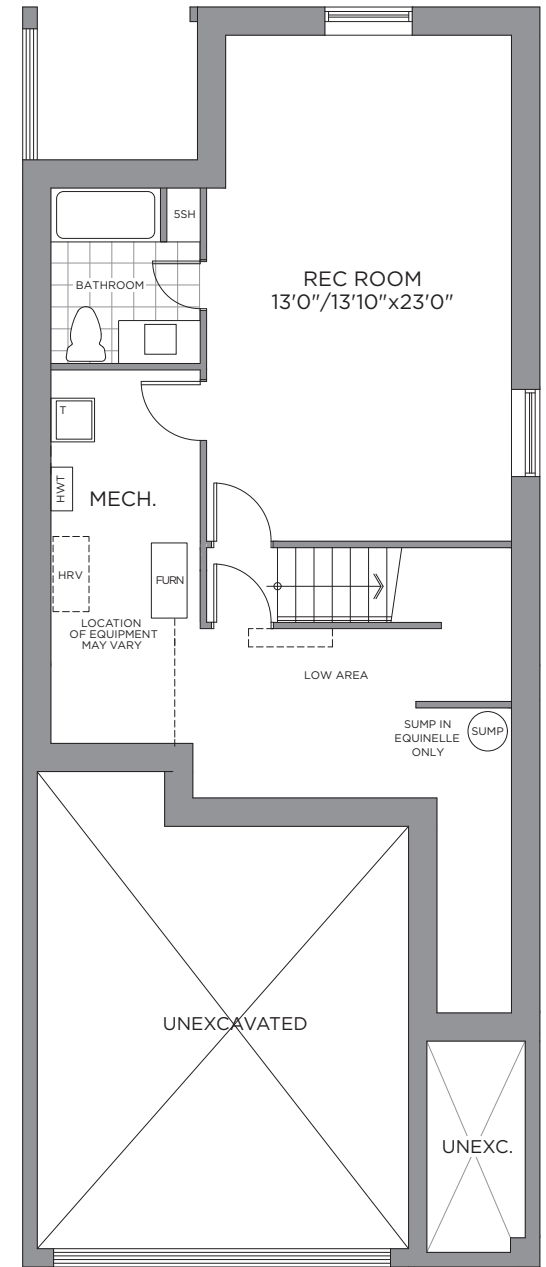
ELEVATION F Artist's concept. E.&O.E.



GROUND FLOOR



SECOND FLOOR



BASEMENT

All drawings are artist's concept and may vary slightly from the final product. Actual usable floorspace may vary from stated area, and square footage has been calculated based on usable living space according to the TARIION rules and does not include garage or unfurnished basement areas. Drawings may show optional features which may not be included in the base price. Bulkheads & box outs may be required as chases for plumbing & mechanical. Garage main door location, if applicable, may vary subject to grade. Specifications subject to change without notice. Manufacturers' images are shown and may differ from the final product. E. & O.E. August 2022.



OUR COMMUNITY



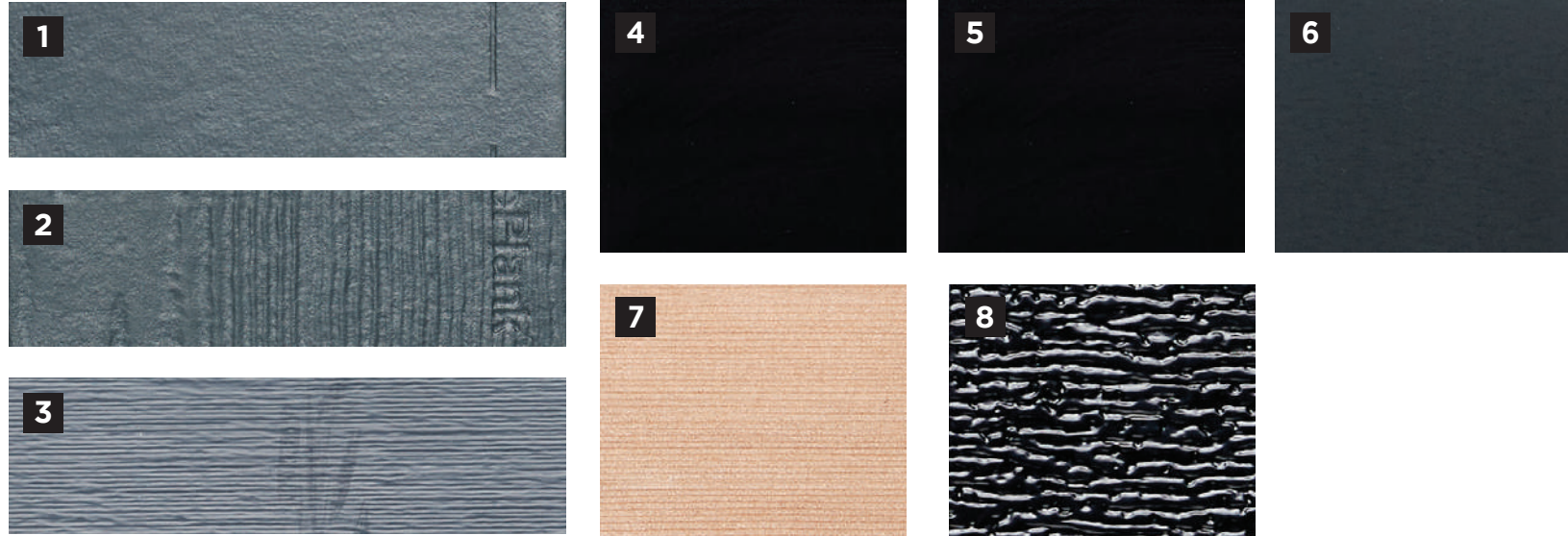
THE COMMUNITY
SITE PLAN



Artist's concept. Map is not drawn to scale. E.&O.E.

ARCHITECTURAL BEAUTY & ELEGANCE
A STATEMENT OF

EXTERIOR



E.&O.E.

1
HARDIE BOARD &
BATTEN
Iron Grey - Smooth

2
HARDIE
PLANK
Select
Cedarmill

3
VINYL SIDING
Sapphire Blue
(side & rear of
house)

4
WINDOWS
Tricorn
Black

5
FRONT DOOR
Tricorn Black

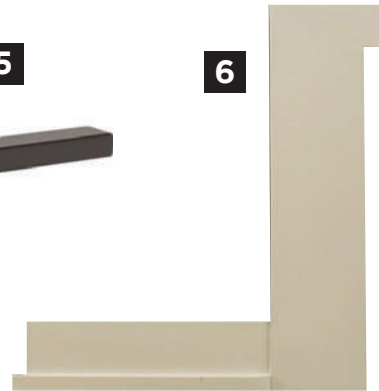
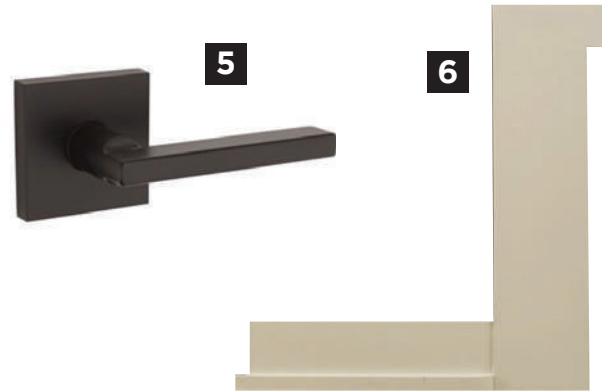
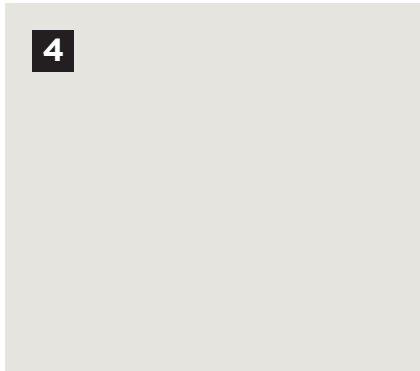
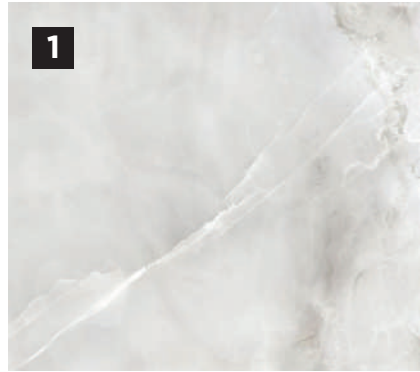
6
FASCIA / SOFFIT
/ ALUMINUM TRIM
Iron Ore

7
SOFFIT OVER FRONT
DOOR & FRONT
PORCH COLUMNS
Cedar Stained Clear

8
GARAGE
DOOR
Black

MAKE A GRAND ENTRANCE WITH AN
EXQUISITE DOOR HARDWARE,
FLOOR & TRIM PACKAGE

INTERIOR DETAILS



E.&O.E.

1
MAIN ENTRY
24x24 Euro La Marca
Onyx Nuvolato

2
YORKSHIRE HARDWOOD
FLOORING
Lauzon White Oak 6-1/4"

3
CARPET ON STAIRS
Sultana Democracy
Berber - 6461

4
INTERIOR PAINT
Benjamin Moore -
Calm

5
INTERIOR DOOR
HARDWARE
Weiser Halifax Square

6
TRIM PACKAGE
Package 5

7
INTERIOR
DOORS
Conmore
5-Panel

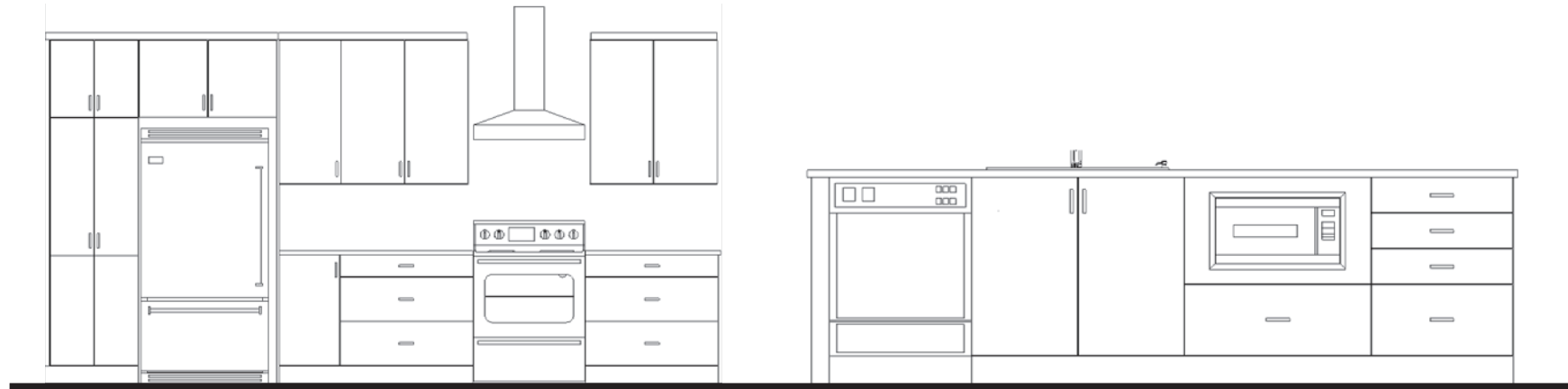
THE FIREPLACE CENTREPIECE
ADDS WARMTH AND AMBIENCE
TO YOUR HOME

FIREPLACE



E.&O.E.

1
FIREPLACE INSERT
Napoleon BL36 linear



KITCHEN CABINET & ISLAND LAYOUT

E.&O.E.



1



2



3



4



5



6



7



8

E.&O.E.

1
HOOD FAN
Cyclone
SC30030SS

2
DOOR PULL
RICHELIEU
BP816096900

3
COUNTERTOP
Hanstone
Quartz-
Yorkville

4
CABINETRY
(MAIN)
Wellington
White

5
CABINETRY
(ISLAND)
Brooklyn

6
KITCHEN SINK
Bristol B927 Double
Bowl

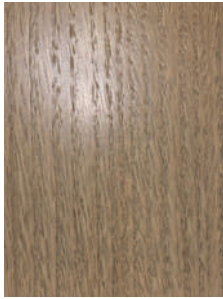
7
KITCHEN FAUCET
Moen Genta
Kitchen Faucet -
7882BL

8
SILVER MIST
BACKSPLASH
Ceratec Village
2.6x5.2 stacked

**A SUMPTUOUS PRIMARY ENSUITE
YOUR COZY PRIVATE RETREAT**

ENSUITE

1



2



3



4



5



6



7



8



9



10



11



ENSUITE LAYOUT

E.&O.E.

E.&O.E.

1

CABINETS
Urban Slab
Oak - Grey
Mountain

2

COUNTERTOP
Hanstone
Quartz

3

FLOORING
Euro Stone
Gatsby 12x24 -
Cabaret

4

**SHOWER
WALL TILE**
Euro Stone
Gatsby 12x24 -
Martini

5

DOOR PULL
RICHELIEU
BP816096900

6

**ENSUITE
SHOWER
FLOOR**
Olympia
Quebec 2x2 -
Black

7

**SHOWER
FIXTURES**
Moen Align
matte black
- T2193BL

8

**TUB
FIXTURE**
Moen Align
matte black
- T393BL

9

**VANITY
FAUCET**
Moen Align
matte black
- 6190BL

10

**VANITY SINK
ENSUITE**
Gerber Wicker
Park - 12-791

11

TOILET
Gerber Viper
single flush
elongated

FULL BATHROOMS
A BLEND OF LUXURY & MODERNITY

MAIN BATH & BASEMENT BATH

1



2



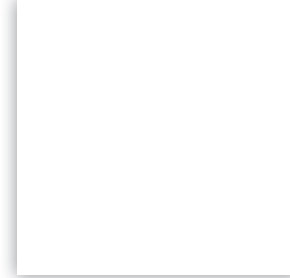
3



4



5



6



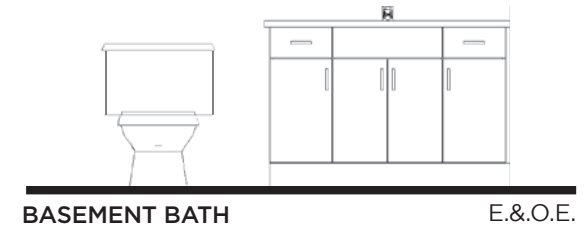
7



8



9



1

CABINETRY
Urban Slab
Oak - Grey
Mountain

2

COUNTERTOP
Hanstone
Quartz -
Angora

3

DOOR PULL
RICHELIEU
BP816096900

4

FLOORING
Centura 13x13
Newcastle -
Beige

5

**SHOWER/TUB
WALL TILE**
Ceratec Subway
Feng Shui 4x16 -
White Glossy

6

**TUB/SHOWER
FIXTURE**
Moen Align -
T2193

7

**VANITY
FAUCET**
Moen Align -
6190

8

VANITY SINK
Gerber
Wicker Park -
12-791

9

TOILET
Gerber Viper
single flush
elongated



Here's How We Bring You Home



Melissa Gauthier,
Director,
Sales & Design

Congratulations On Selecting Your New eQ Home!

1

Virtual Appointment To Digitally Sign Agreement Of Purchase & Sale With Your eQ Sales Representative**
Provide Deposit Cheques
(Instruction Will Be Provided)

2

Provide Mortgage Pre-Approval From Your Bank

3

Review Agreement With Lawyer

4

Congratulations! Your New Home Purchase Is Now Official

5

Receive Your eQ Homeowner's Portal Login By Email Within 10 Business Days Of Firm Sale



Peter Jury,
VP of
Construction

Your New Home Construction Starts (If you purchase your home early enough in the construction process, these steps may apply to you.)

1

Lot Walk. Meet The Builder.**

2

Foundation Finished. Customer Care To Send Progress Photo

3

Roof Is On And Shingled. Receive A Progress Photo From Customer Care

4

Frame Walk With Customer Care And Construction Representative**

5

Home Exterior Completed. Receive A Progress Photo From Customer Care

6

Walk-Through For Blinds And Window Coverings Measurements**

7

Homeowner Orientation (PDI).** Customer Care Will Walk You Through Your New Home

8

Register Online For MyHome At Tarion.com

9

Submit AVID Construction Survey



Francesca Jacobs,
Customer Care
Manager

Welcome Home!

1

Submit 30-Day Tarion Warranty If Necessary***

2

Submit AVID Customer Satisfaction Survey (30 Days After Closing)

3

Submit 1-Year Tarion Warranty If Necessary***

4

Submit 2-Year Tarion Warranty If Necessary***

5

3 to 7-Year Tarion Warranty Starts***

This event may be in-person or virtual. An eQ Homes representative will contact you to confirm the details. *See your Tarion Warranty for details.



JENNIFER DEAN
New Home Sales Consultant
TEL: 613.822.7247
EMAIL: jdean@eqhomes.ca



CLAUDIA WARNER-JACOBS
New Home Sales Consultant
TEL: 613.822.7247
EMAIL: CWarnerJacobs@eqhomes.ca

122 Dun Skipper Drive, Ottawa, ON, K1X 0G2



All drawings are artist's concept and may vary slightly from the final product. Actual usable floorspace may vary from stated area, and square footage has been calculated based on usable living space according to the TARION rules and does not include garage or unfurnished basement areas. Drawings may show optional features which may not be included in the base price. Bulkheads & box outs may be required as chases for plumbing & mechanical. Garage main door location, if applicable, may vary subject to grade. In an ongoing review of homeowner's needs, changes may have been incorporated into our "New Home Features" and construction techniques. Specifications subject to change without notice. Manufacturers' images are shown and may differ from the final product. E. & O.E. February 2022.