

# Designer Finished Homes

## THE JUDE (END)

CT3-21 | 1,378 SQ. FT. | 3 BEDS | 1.5 BATHS



Artist's concept. E.&O.E.

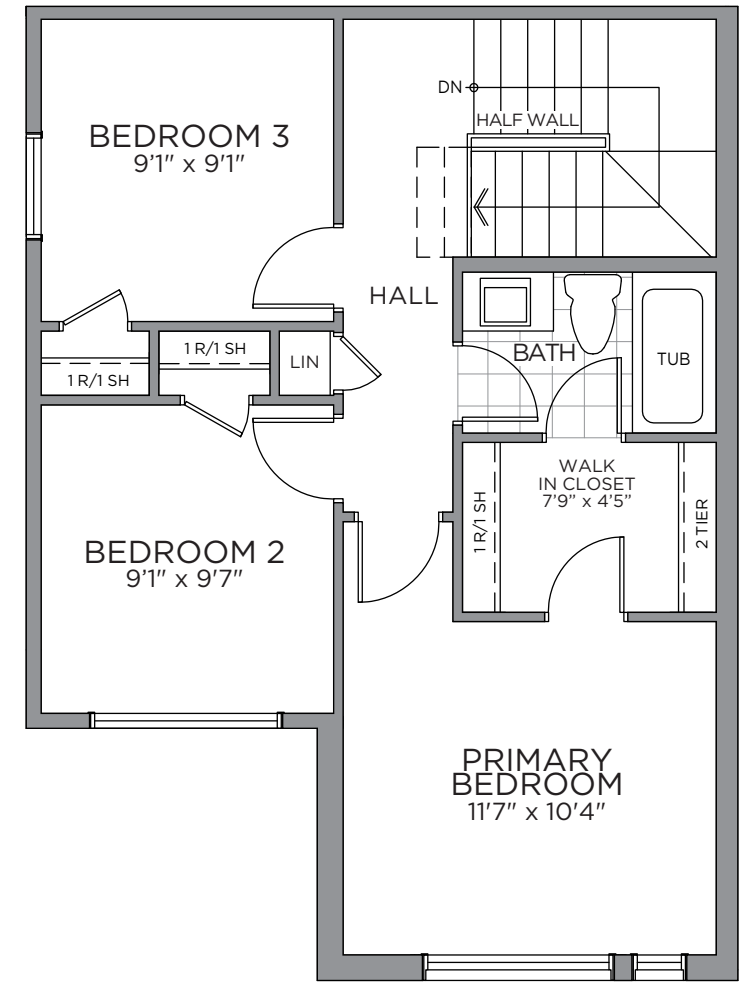
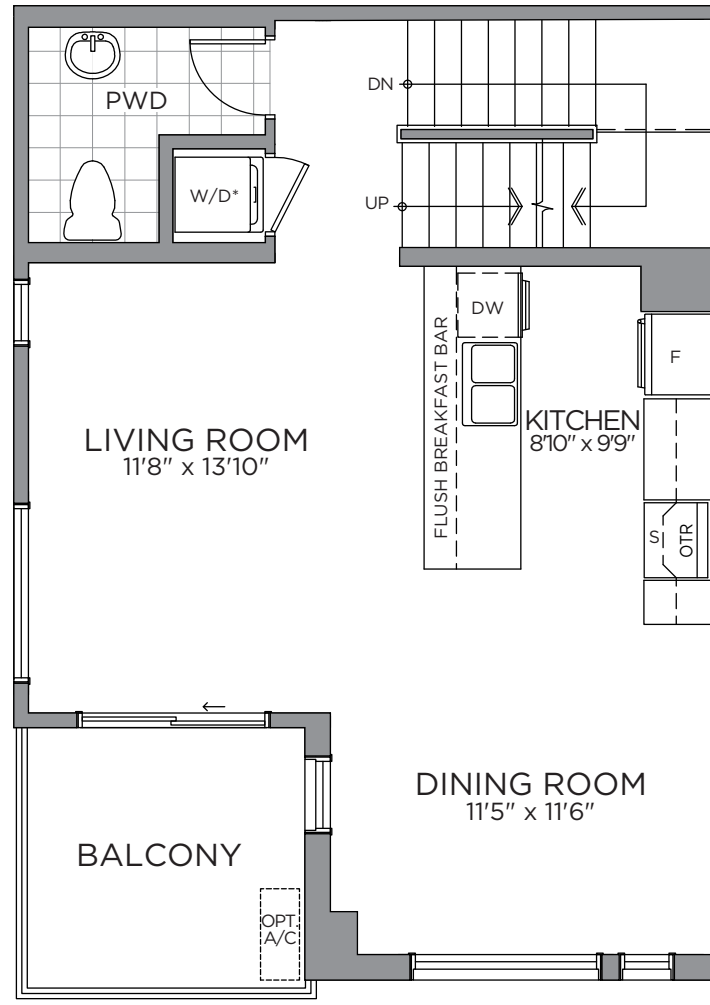
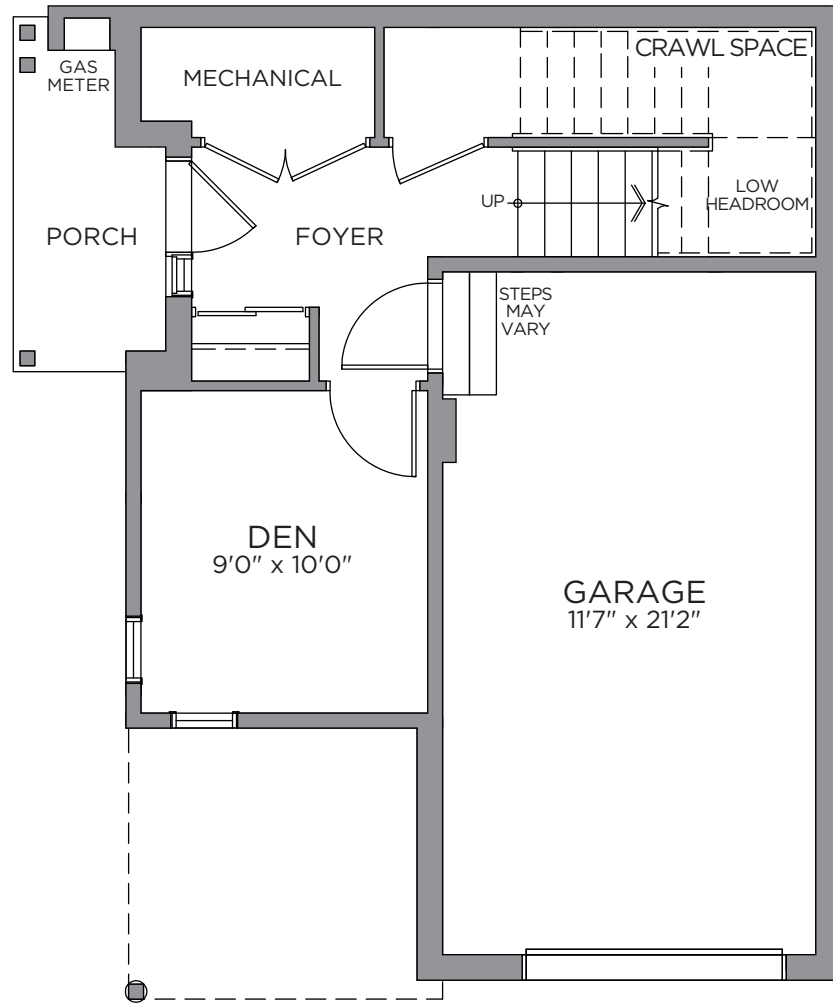


Artist's concept. E.&O.E.

# Designer Finished Homes

## THE JUDE (END)

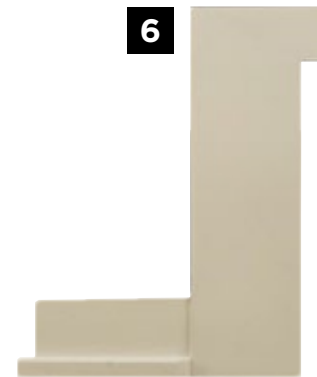
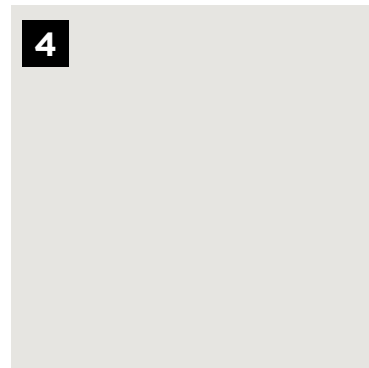
CT3-21 | 1,378 SQ. FT. | 3 BEDS | 1.5 BATHS



\*Washer and Dryer location for optional third floor plan only. Prices, dimensions and specifications are subject to change without notice. All renderings are artist's concept. E. & O.E. March 2024.

# INTERIOR DETAILS

MAKE A GRAND ENTRANCE WITH AN EXQUISITE **DOOR HARDWARE, FLOOR & TRIM PACKAGE**



E.&O.E.

**1**

**LAMINATE FLOORING**

Laminate Plank  
Flooring - Dubal  
Sunset

**2**

**CARPET**

Beaulieu  
Sultana  
II - Tender  
Taupe

**3**

**TILING (POWDER ROOM)**

Newcastle  
Beige Tile

**4**

**INTERIOR PAINT**

Benjamin  
Moore OC-  
22 - Calm

**5**

**INTERIOR DOOR HARDWARE**

Layton Satin  
Chrome Levers

**6**

**TRIM PACKAGE**

MDF Flat Stock  
(3/8" x 3-7/8")  
/ MDF (7/16" x  
11/16")

**7**

**INTERIOR DOORS**

Cambridge  
2 Panel  
Smooth



# PRIMARY ENSUITE/MAIN BATH

WELL APPOINTED WITH SPA-INSPIRED COMFORTS IN YOUR COZY PRIVATE RETREAT



1

**CABINETRY**  
Como -  
Solstice

2

**COUNTERTOP**  
Laminate  
Beige Pampas

3

**FLOORING**  
Ceratec  
Burlingstone  
White 13x13

4

**SHOWER/TUB  
WALL TILE**  
Ceratec Burlingstone  
White 8x10

5

**CABINET  
PULL**  
Matte  
Black

6

**VANITY  
FAUCET**  
Moen Genta  
- Matte Black

7

**TUB/SHOWER  
FIXTURE**  
Moen Genta -  
Matte Black

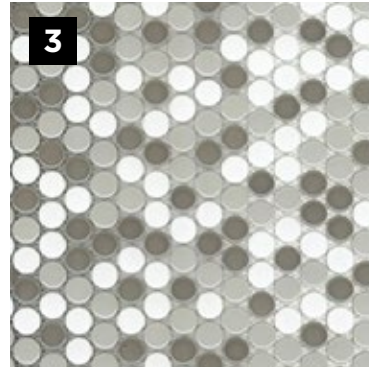
8

**VANITY SINK**  
Contrac  
Reaves Drop-  
In - White

E.&O.E.

# KITCHEN

A GREAT RECIPE STARTS WITH A **GOURMET CHEF KITCHEN**



**1**  
**KITCHEN SINK**  
Nautika Double  
Bowl Undermount  
- Stainless Steel

**2**  
**DOOR  
PULL**  
Matte  
Black

**3**  
**BACKSPLASH**  
Olympia Penny  
Rounds Mix - White/  
Tender Grey/Taupe

**4**  
**COUNTERTOP**  
Silestone  
Quartz -  
Halcyon

**5**  
**CABINETS**  
Mission  
Thermofoil -  
Satin White

**6**  
**KITCHEN  
FAUCET**  
Moen Sleek -  
Black Matte

# APPLIANCES

ENJOY THE EASE AND LUXURY OF LIFE WITH THE HELP OF **MODERN APPLIANCES**



**1**  
**WASHER**  
Whirlpool 5.0  
C/F Front  
Load - White

**2**  
**DRYER**  
Whirlpool 7.4  
C/F Front  
Load Electric

**3**  
**HOOD FAN**  
GE Over-  
the-Range  
Microwave

**4**  
**RANGE**  
LG 30"  
Electric  
Smooth Top

**5**  
**DISHWASHER**  
LG 24" Built In  
Front Control

**6**  
**REFRIGERATOR**  
LG 36" Counter  
Depth French  
Door

E.&O.E.

To call **Findlay Creek** home, contact your  
**Pathways Sales Consultant** to book an appointment.



**JENNIFER DEAN**  
New Home Sales Consultant  
TEL: 613.822.7247  
EMAIL: [jdean@eqhomes.ca](mailto:jdean@eqhomes.ca)

**PATHWAYS SALES OFFICE:**

122 Dun Skipper Drive, Ottawa, ON, K1X 0G2

All drawings are artist's concept and may vary slightly from the final product. Actual usable floorspace may vary from stated area, and square footage has been calculated based on usable living space according to the TARION rules and does not include garage or unfurnished basement areas. Drawings may show optional features which may not be included in the base price. Bulkheads & box outs may be required as chases for plumbing & mechanical. Garage main door location, if applicable, may vary subject to grade. In an ongoing review of homeowner's needs, changes may have been incorporated into our "New Home Features" and construction techniques. Specifications subject to change without notice. Manufacturers' images are shown and may differ from the final product. E. & O.E. March 2024.

