

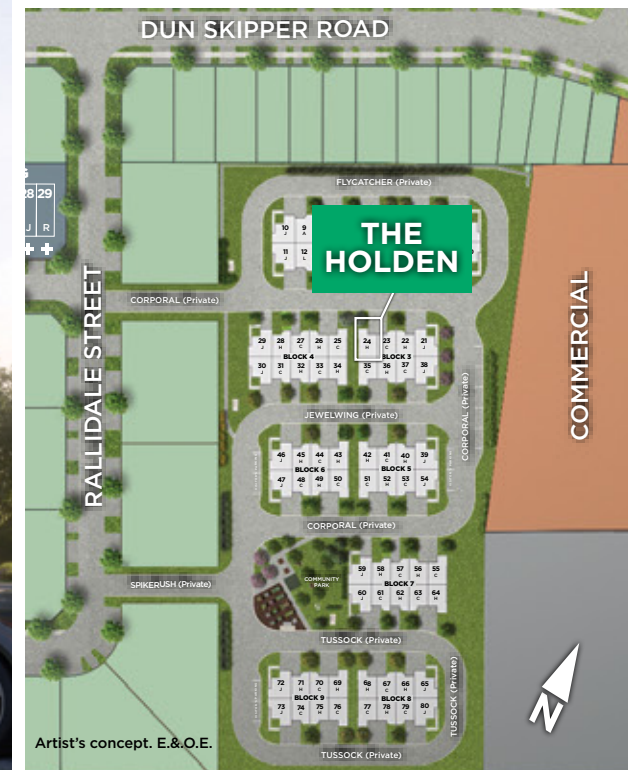
Designer Finished Homes

THE HOLDEN

CT3-24 | 1,155 SQ. FT. | 2 BEDS | 2.5 BATHS



Artist's concept. E.&O.E.

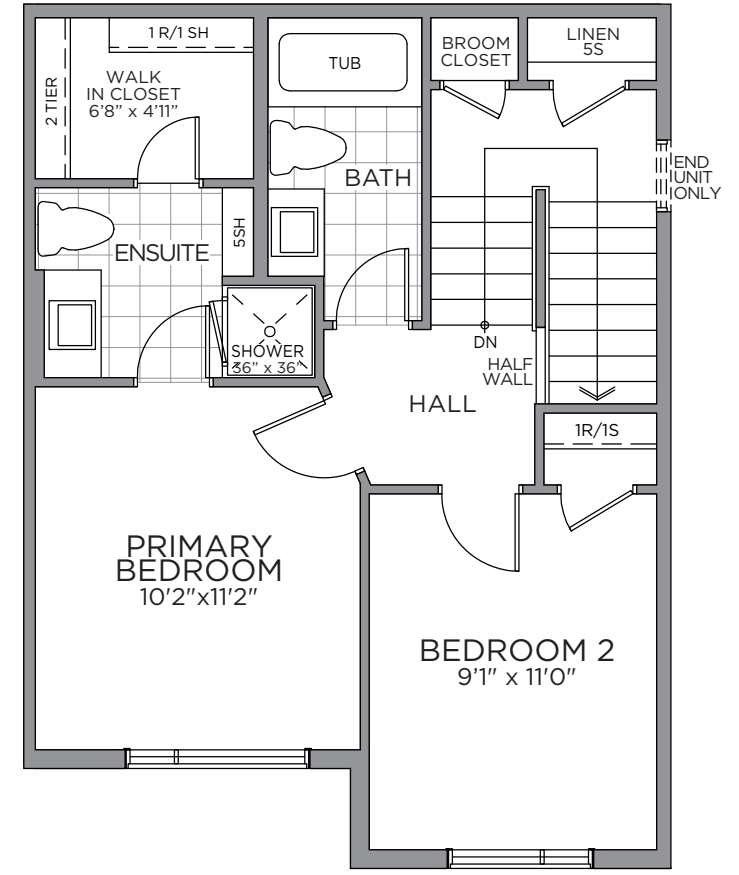
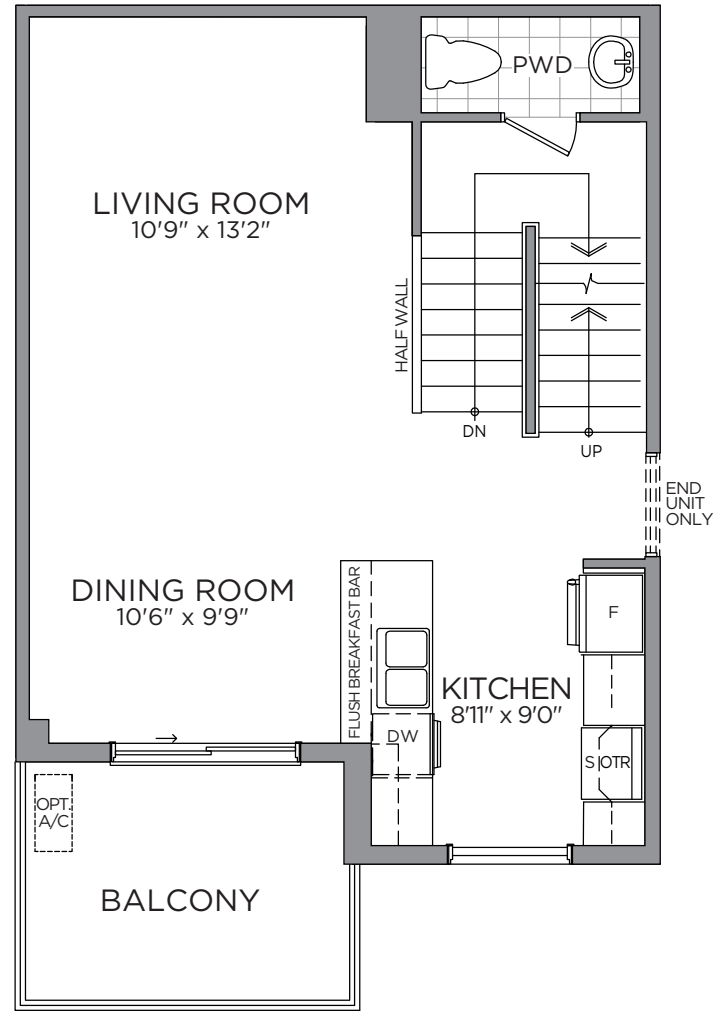
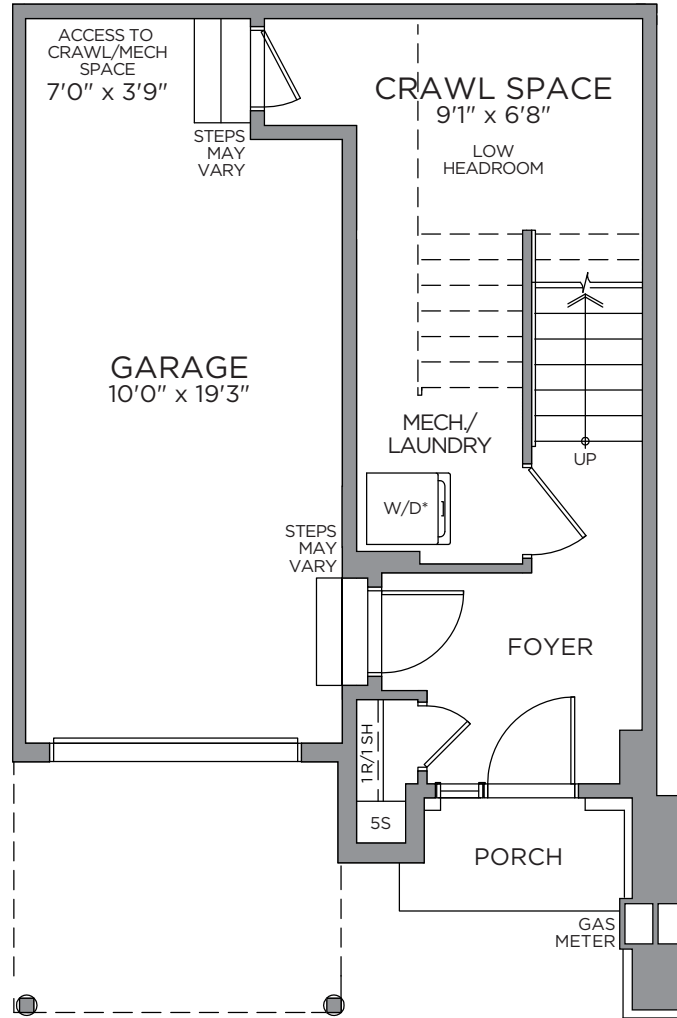


Artist's concept. E.&O.E.

Designer Finished Homes

THE HOLDEN

CT3-24 | 1,155 SQ. FT. | 2 BEDS | 2.5 BATHS



*Washer and Dryer location for optional third floor plan only. Prices, dimensions and specifications are subject to change without notice. All renderings are artist's concept. E. & O.E. May 2024.

INTERIOR DETAILS

MAKE A GRAND ENTRANCE WITH AN EXQUISITE **DOOR HARDWARE, FLOOR & TRIM PACKAGE**



E.&O.E.

1

MAIN ENTRY
Laminate
Plank Flooring
- Orient Bay

2

LAMINATE FLOORING
Laminate
Plank Flooring
- Orient Bay

3

CARPET
Beaulieu
Coronet
- Mystic
Beige

4

INTERIOR PAINT
Benjamin
Moore OC-
22 - Calm

5

INTERIOR DOOR HARDWARE
Layton Satin
Chrome Levers

6

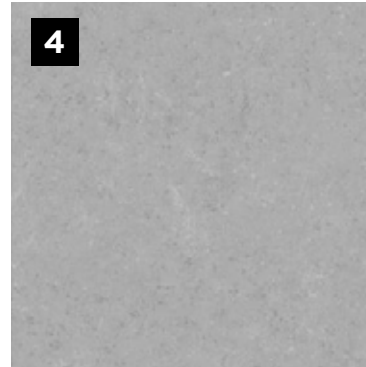
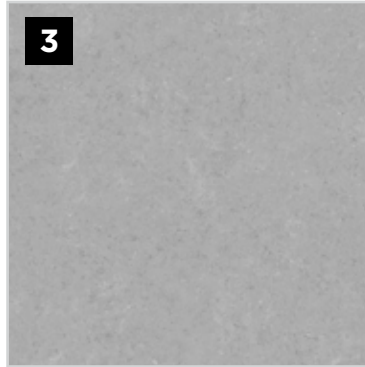
TRIM PACKAGE
MDF Flat (3/8"
x 3-7/8") / MDF
(7/16" x 11/16")

7

INTERIOR DOORS
Cambridge
2 Panel
Smooth

PRIMARY ENSUITE/MAIN BATH

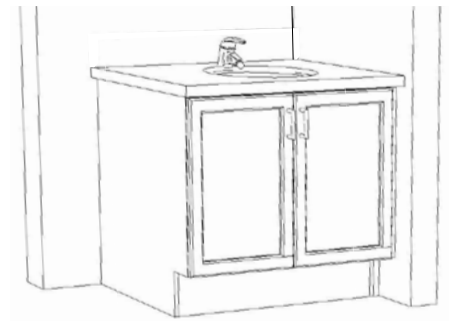
WELL APPOINTED WITH SPA-INSPIRED COMFORTS IN YOUR COZY PRIVATE RETREAT



E.&O.E.



PRIMARY ENSUITE CABINET LAY-OUT



MAIN BATH CABINET LAY-OUT

1

CABINETRY
Como -
Solstice

2

COUNTERTOP
Laminate -
Beige Pampas

3

FLOORING
Olympia 12x12
Construct -
Dark Grey

4

**SHOWER/TUB
WALL TILE**
Olympia 8x10
Construct - Dark Grey

5

**CABINET
PULL**
Chrome

6

**VANITY
FAUCET**
Moen Genta -
Chrome

7

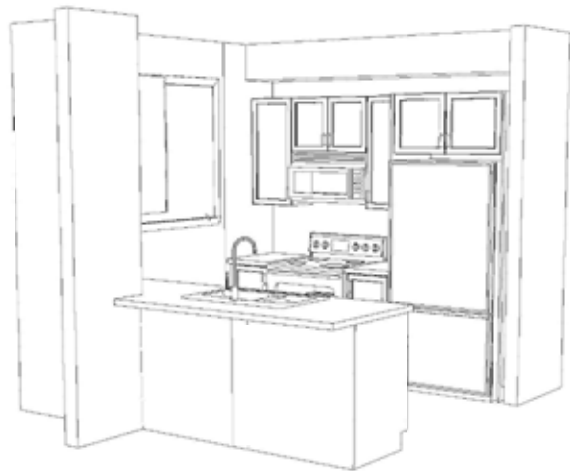
**TUB/SHOWER
FIXTURE**
Moen Genta -
Chrome

8

VANITY SINK
Contrac
Reaves Drop-In
- White

KITCHEN

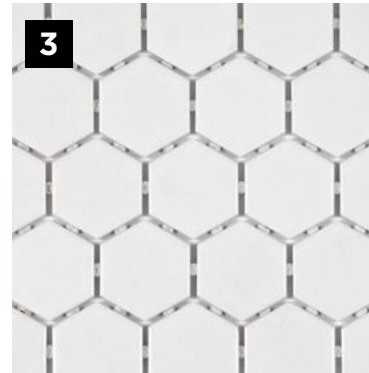
A GREAT RECIPE STARTS WITH A **GOURMET CHEF KITCHEN**



KITCHEN CABINET LAY-OUT



1



3



2



4



5



6

E.&O.E.



ISLAND CABINET LAY-OUT

1

KITCHEN SINK
Nautika Double
Bowl Undermount
- Stainless Steel

2

CABINETRY
Cabinetry
Soho MDF -
Fennel Green

3

BACKSPLASH
Olympia Ontario
Hexagon - Snow
White

4

COUNTERTOP
Silestone
Quartz -
Halcyon

5

**DOOR
PULL**
Matte
Black

6

**KITCHEN
FAUCET**
Moen Sleek -
Matte Black

APPLIANCES

ENJOY THE EASE AND LUXURY OF LIFE WITH THE HELP OF **MODERN APPLIANCES**



1
WASHER
Whirlpool 5.0
C/F Front
Load - White

2
DRYER
Whirlpool 7.4
C/F Front
Load Electric

3
HOOD FAN
GE Over-
the-Range
Microwave

4
RANGE
LG 30"
Electric
Smooth Top

5
DISHWASHER
LG 24" Built In
Front Control

6
REFRIGERATOR
LG 36" Counter
Depth French
Door

To call **Findlay Creek** home, contact your
Pathways Sales Consultant to book an appointment.



JENNIFER DEAN
New Home Sales Consultant
TEL: 613.822.7247
EMAIL: jdean@eqhomes.ca

PATHWAYS SALES OFFICE:

122 Dun Skipper Drive, Ottawa, ON, K1X 0G2

All drawings are artist's concept and may vary slightly from the final product. Actual usable floorspace may vary from stated area, and square footage has been calculated based on usable living space according to the TARION rules and does not include garage or unfurnished basement areas. Drawings may show optional features which may not be included in the base price. Bulkheads & box outs may be required as chases for plumbing & mechanical. Garage main door location, if applicable, may vary subject to grade. In an ongoing review of homeowner's needs, changes may have been incorporated into our "New Home Features" and construction techniques. Specifications subject to change without notice. Manufacturers' images are shown and may differ from the final product. E. & O.E. May 2024.

