

Designer Finished Homes

THE CLEMENTINE

CT3-23 | 1,147 SQ. FT. | 2 BEDS | 2.5 BATHS



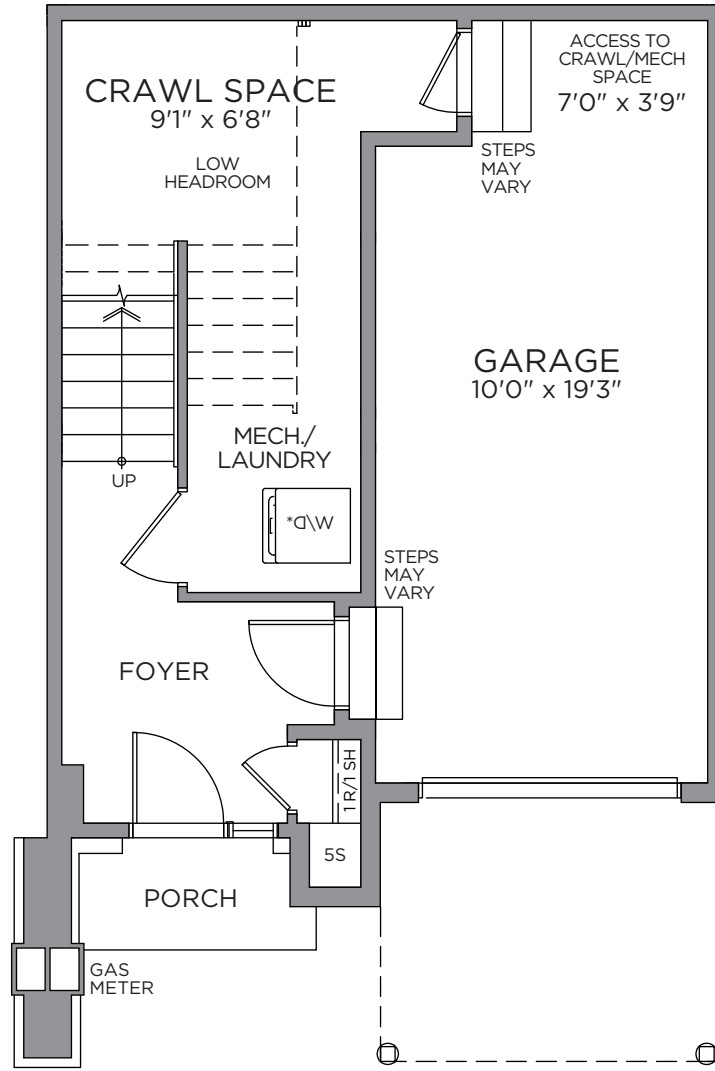
Artist's concept. E.&O.E.

Artist's concept. E.&O.E.

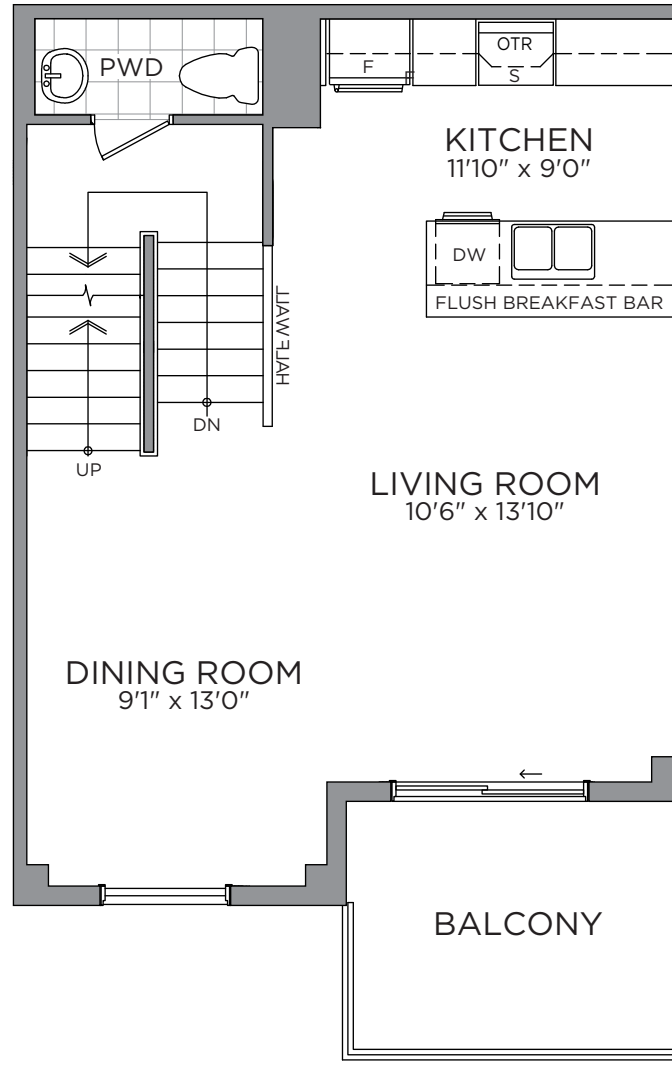
Designer Finished Homes

THE CLEMENTINE

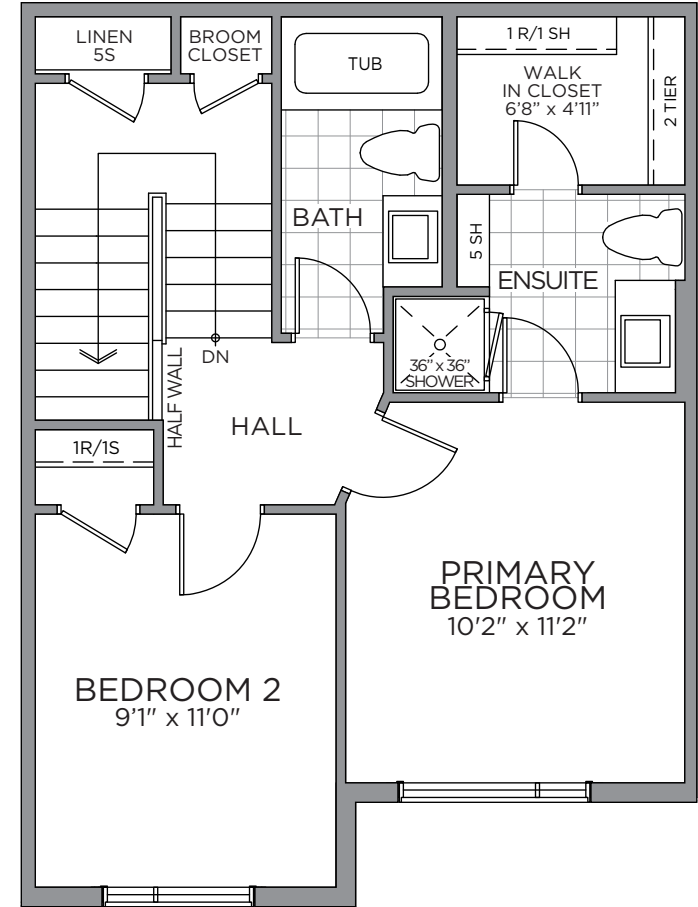
CT3-23 | 1,147 SQ. FT. | 2 BEDS | 2.5 BATHS



GROUND FLOOR



SECOND FLOOR

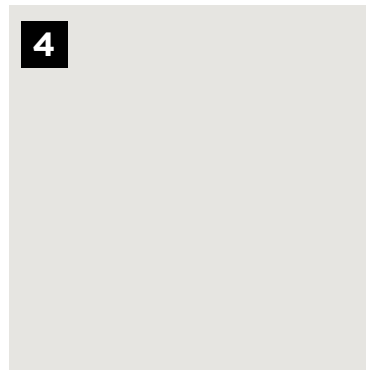
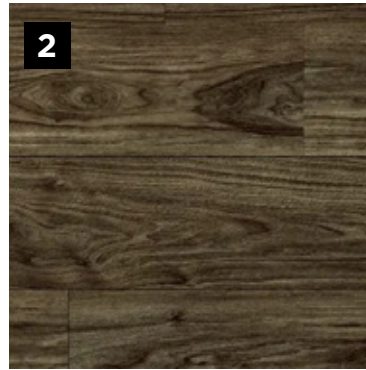


THIRD FLOOR

*Washer and Dryer location for optional third floor plan only. Prices, dimensions and specifications are subject to change without notice. All renderings are artist's concept. E. & O.E. May 2024.

INTERIOR DETAILS

MAKE A GRAND ENTRANCE WITH AN EXQUISITE **DOOR HARDWARE, FLOOR & TRIM PACKAGE**



E.&O.E.

1

MAIN ENTRY
Laminate
Plank Flooring
- Harbour
Island

2

**LAMINATE
FLOORING**
Laminate Plank
Flooring -
Harbour Island

3

CARPET
Beaulieu
Sultana II
- Shammy

4

**INTERIOR
PAINT**
Benjamin
Moore OC-
22 - Calm

5

**INTERIOR
DOOR
HARDWARE**
Layton Satin
Chrome Levers

6

TRIM PACKAGE
MDF Flat Stock
(3/8" x 3-7/8")
/ MDF (7/16" x
11/16")

7

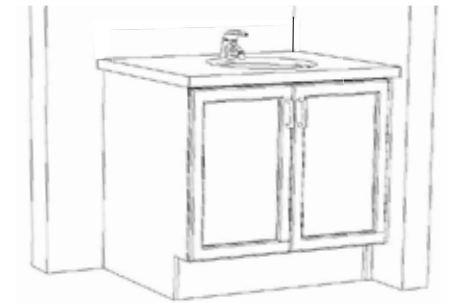
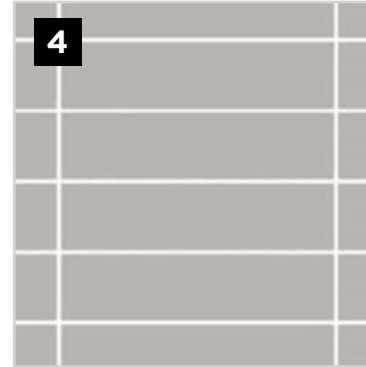
**INTERIOR
DOORS**
Cambridge
2 Panel
Smooth

PRIMARY ENSUITE/MAIN BATH

WELL APPOINTED WITH SPA-INSPIRED COMFORTS IN YOUR COZY PRIVATE RETREAT



PRIMARY ENSUITE CABINET LAY-OUT



MAIN BATH CABINET LAY-OUT



6



7



8



E.&O.E.

1

CABINETRY
Como 5/8
- Larice
Bianco

2

COUNTERTOP
Laminate -
P396-VL

3

FLOORING
Centura
12x12 Giza
Menkaure

4

SHOWER/TUB WALL TILE
Ceratec 4x16 Essential
Subway Tile - Horizontally
Stacked - Greige

5

**CABINETRY
PULL**
Matte Black

6

**VANITY
FAUCET**
Moen Genta -
Matte Black

7

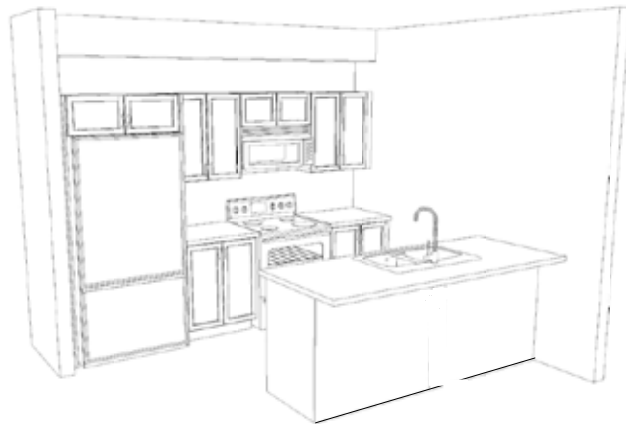
**TUB/SHOWER
FIXTURE**
Moen Genta -
Matte Black

8

VANITY SINK
Contrac
Reaves Drop-In
- White

KITCHEN

A GREAT RECIPE STARTS WITH A **GOURMET CHEF KITCHEN**



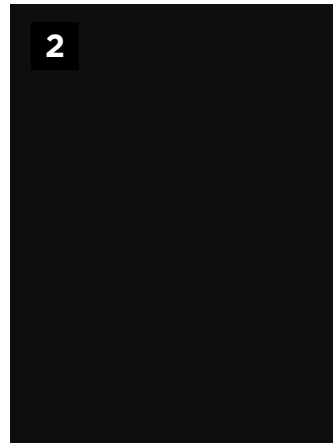
KITCHEN CABINET LAY-OUT



1



3



2



4

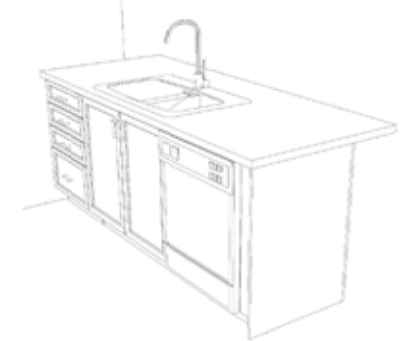


5



6

E.&O.E.



ISLAND CABINET LAY-OUT

1

KITCHEN SINK
Nautika Double
Bowl Undermount
- Stainless Steel

2

CABINETRY
Soho Oak -
Ebony

3

BACKSPLASH
Centura
VINDEC7 8x8

4

COUNTERTOP
Silestone
Quartz - Miami
Vena

5

**CABINETRY
PULL**
Brushed
Nickel

6

**KITCHEN
FAUCET**
Moen Sleek -
Stainless Steel

APPLIANCES

ENJOY THE EASE AND LUXURY OF LIFE WITH THE HELP OF **MODERN APPLIANCES**



E.&O.E.

1

WASHER

Whirlpool - 5.0
C/F Front Load
Washer - White

2

DRYER

Whirlpool -
7.4 C/F Front
Load Electric

3

HOOD FAN

GE Over-
the-Range
Microwave

4

RANGE

LG - 30"
Electric Smooth
Top Range

5

DISHWASHER

LG - 24"
Built In Front
Control

6

REFRIGERATOR

LG - 36"
Counter Depth
French Door

To call **Findlay Creek** home, contact your
Pathways Sales Consultant to book an appointment.



JENNIFER DEAN
New Home Sales Consultant
TEL: 613.822.7247
EMAIL: jdean@eqhomes.ca

PATHWAYS SALES OFFICE:

122 Dun Skipper Drive, Ottawa, ON, K1X 0G2

All drawings are artist's concept and may vary slightly from the final product. Actual usable floorspace may vary from stated area, and square footage has been calculated based on usable living space according to the TARION rules and does not include garage or unfurnished basement areas. Drawings may show optional features which may not be included in the base price. Bulkheads & box outs may be required as chases for plumbing & mechanical. Garage main door location, if applicable, may vary subject to grade. In an ongoing review of homeowner's needs, changes may have been incorporated into our "New Home Features" and construction techniques. Specifications subject to change without notice. Manufacturers' images are shown and may differ from the final product. E. & O.E. May 2024.

