

37'
2-STOREY SINGLES

THE PIPER II
4 BEDROOM ~ 2,653 SQ. FT.



ELEVATION C

ARTIST'S CONCEPT



ELEVATION F

ARTIST'S CONCEPT



ELEVATION M

ARTIST'S CONCEPT

THE PIPER II
4 BEDROOM ~ 2,653 SQ. FT.

37'
2-STOREY SINGLES



ELEVATION B

ARTIST'S CONCEPT

37'
2-STOREY SINGLES

THE PIPER II ~ 2,653 SQ. FT.

WITH OPTIONAL FINISHED BASEMENT ~ 3,263 SQ. FT.



ELEVATION B



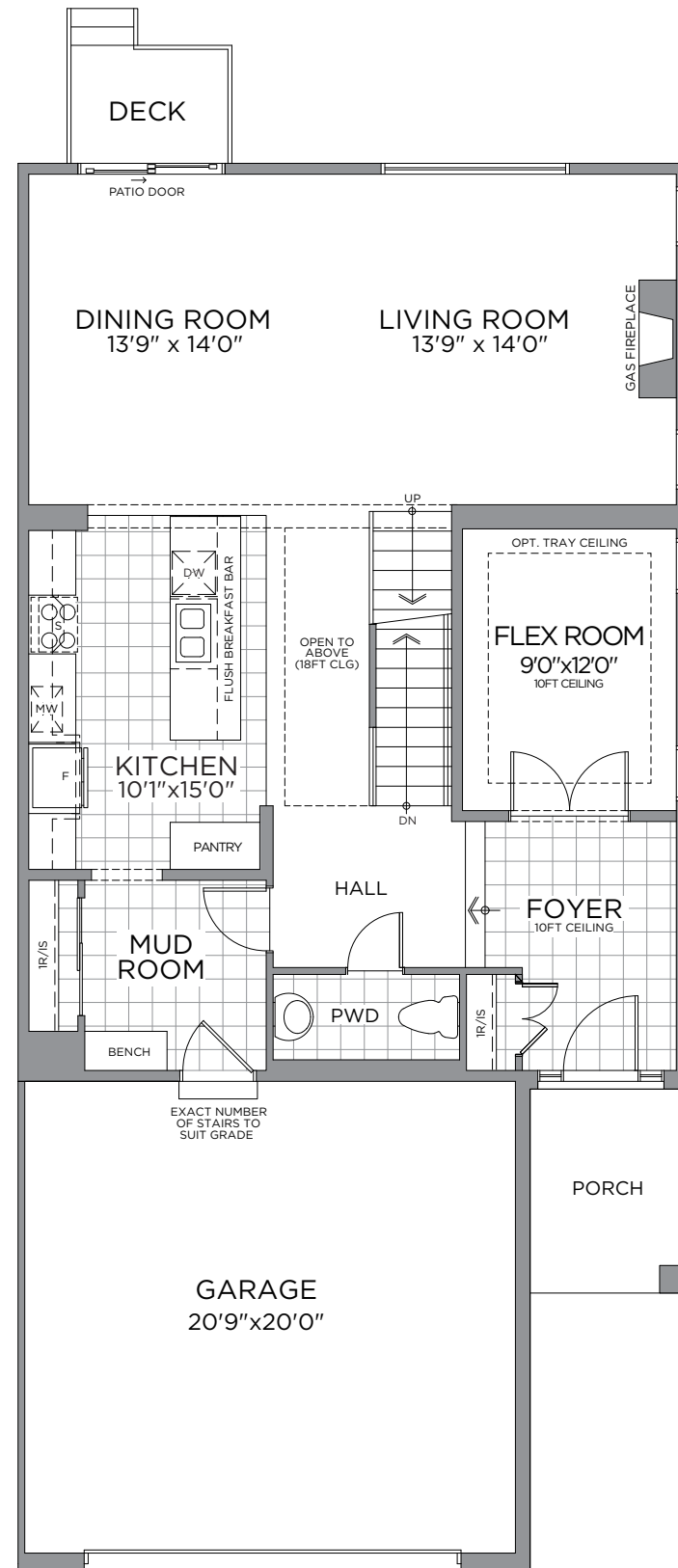
ELEVATION C



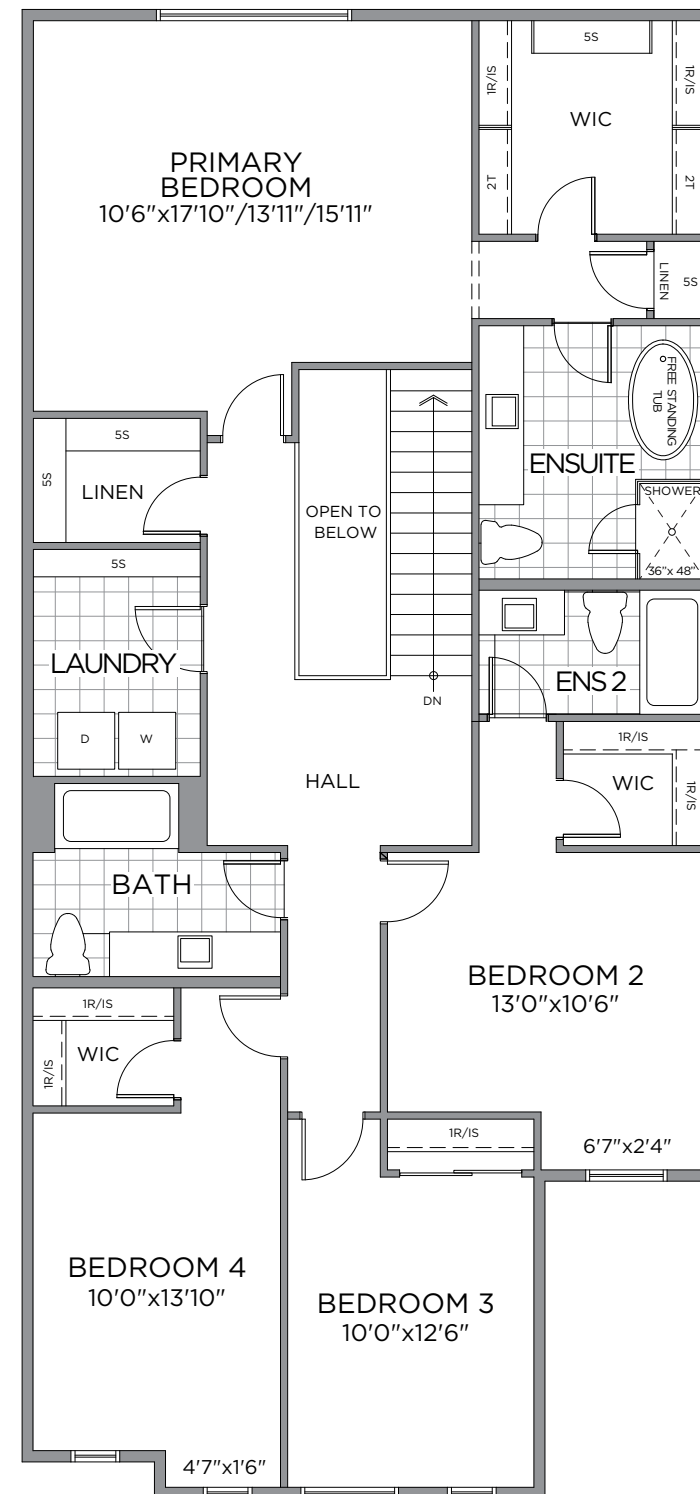
ELEVATION F



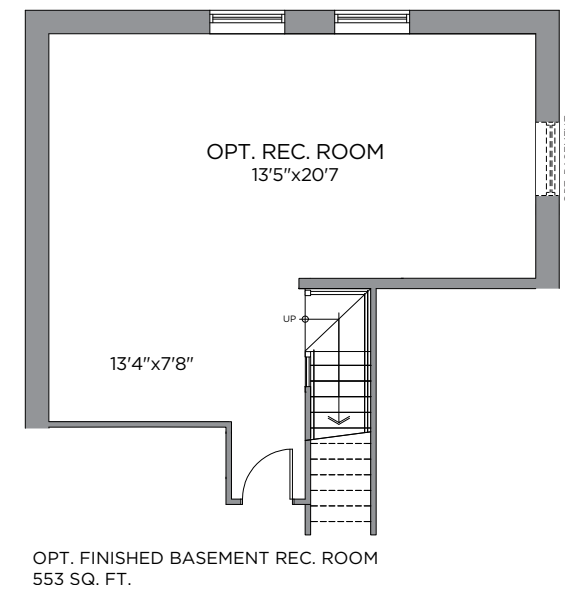
ELEVATION M



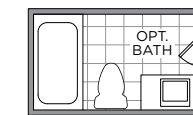
GROUND FLOOR



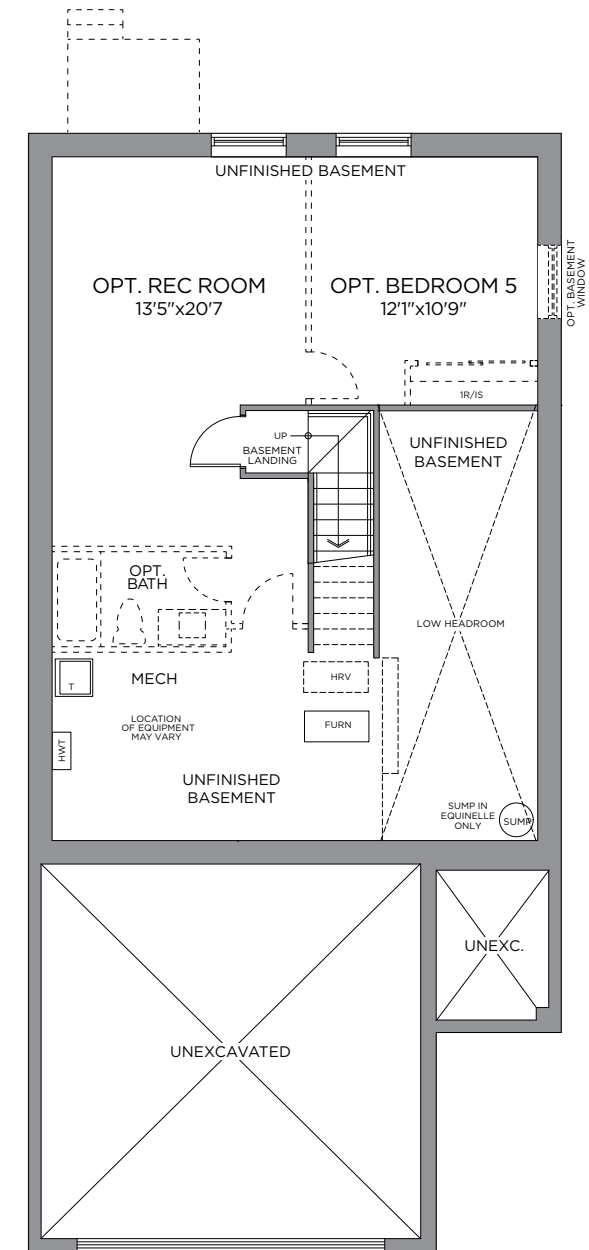
SECOND FLOOR



OPT. FINISHED BASEMENT REC. ROOM
553 SQ. FT.



OPT. FINISHED BASEMENT
BATHROOM



STANDARD BASEMENT PLAN
OPT. FINISHED BASEMENT PLAN
553 SQ. FT.

*Front window and porch sizing/locations vary based on elevations, see agent for detailed drawings. ** Sump pump is for eQuinelle only. Prices, dimensions and specifications are subject to change without notice. All renderings are artist's concept. E. & O.E. January 2025.