



33'
2-STOREY SINGLES

THE PAISLEY
3 BEDROOM ~ 2,023 SQ. FT.



ELEVATION M

ARTIST'S CONCEPT

THE PAISLEY
3 BEDROOM ~ 2,023 SQ. FT.



ELEVATION B

ARTIST'S CONCEPT

33'
2-STOREY SINGLES

THE PAISLEY ~ 2,023 SQ. FT.

WITH OPTIONAL FINISHED BASEMENT ~ 2,503 SQ. FT.



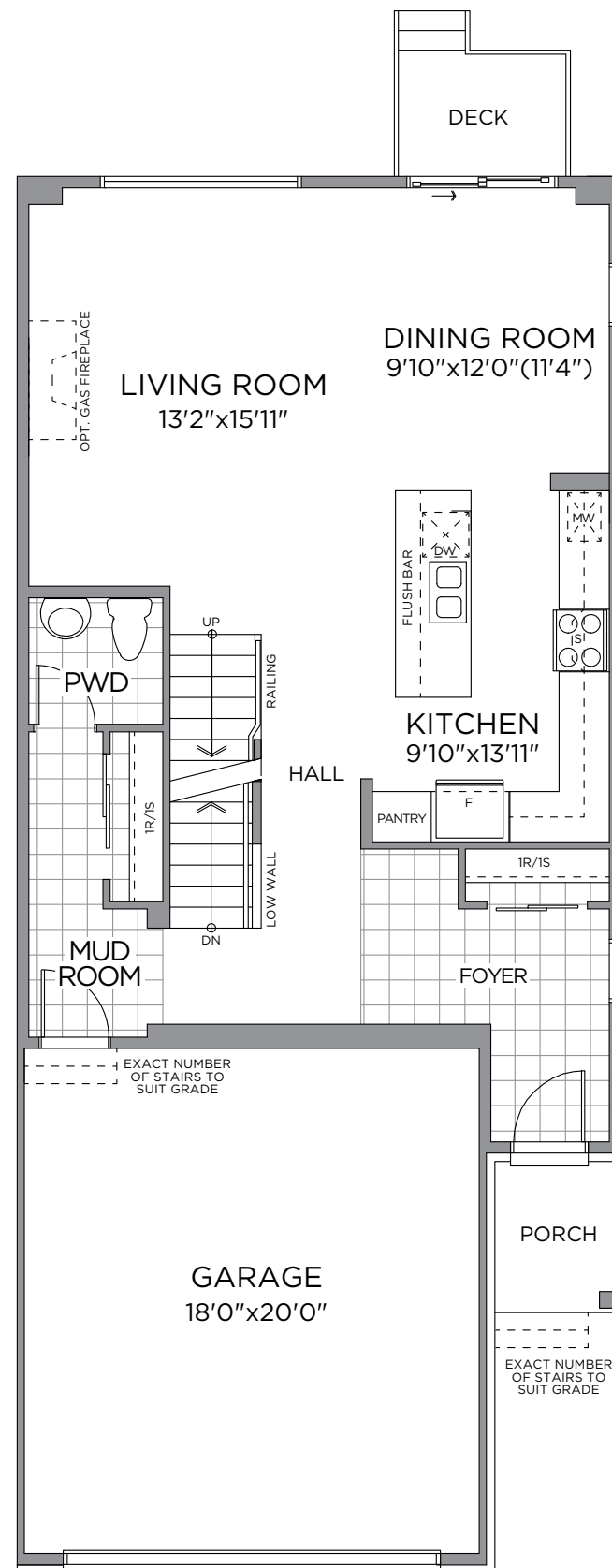
ELEVATION B



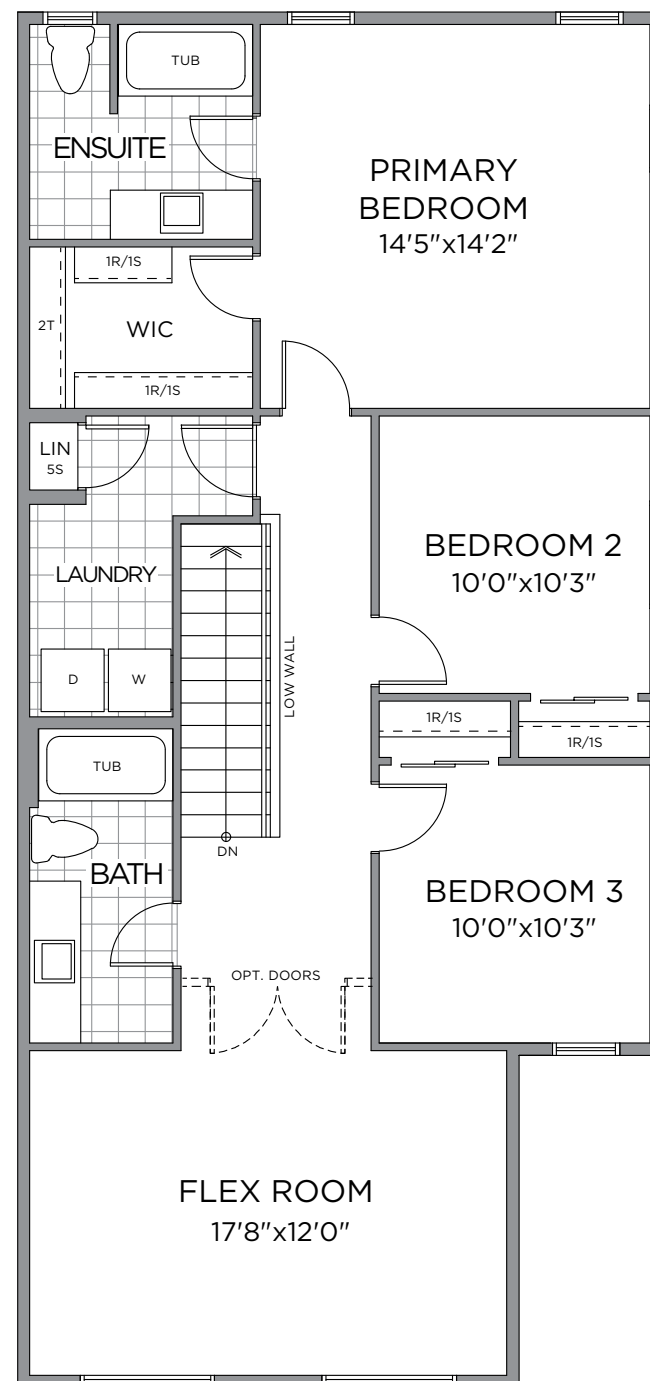
ELEVATION F



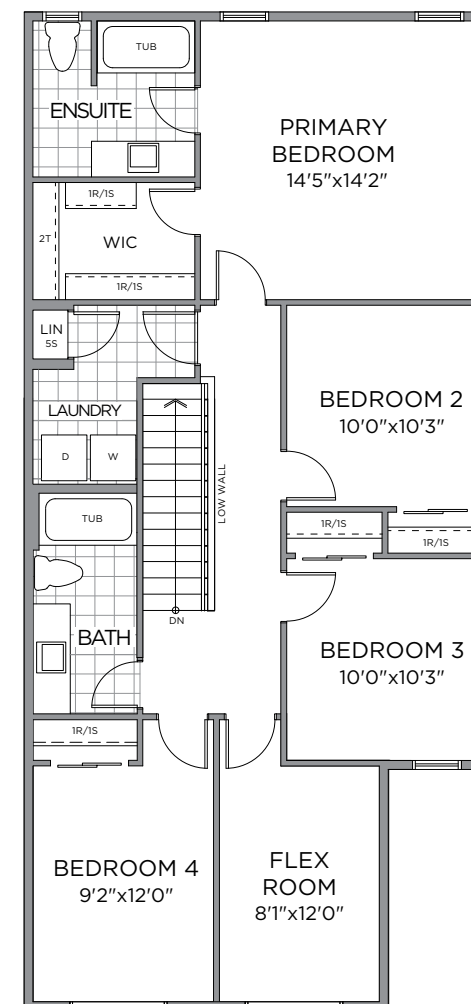
ELEVATION M



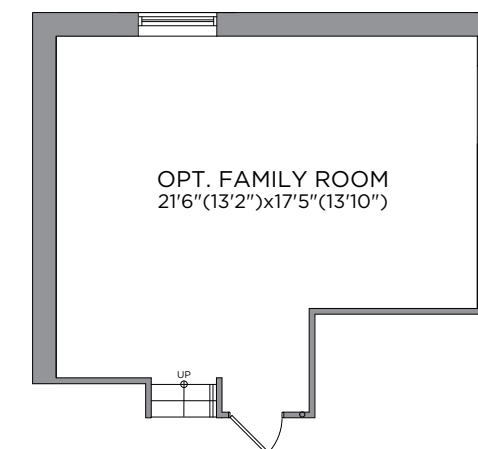
GROUND FLOOR



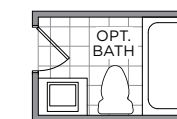
SECOND FLOOR



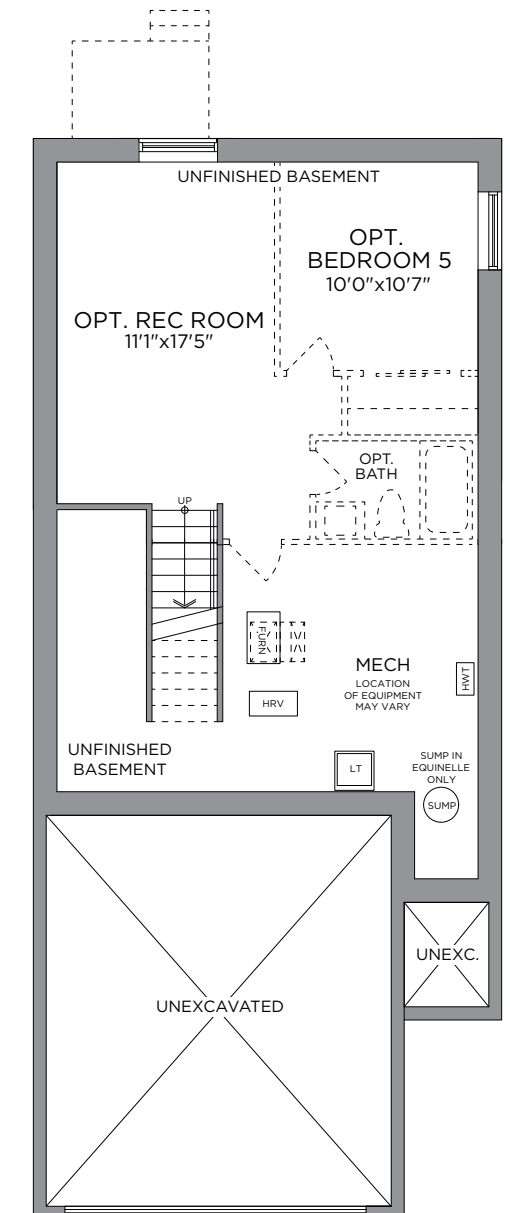
SECOND FLOOR PLAN
OPT. 4 BEDROOM
ELEV. B



OPT. FINISHED BASEMENT
FAMILY ROOM
431 SQ. FT.



OPT. FINISHED BASEMENT
BATHROOM



STANDARD BASEMENT PLAN
OPT. FINISHED BASEMENT PLAN
468 SQ. FT.

*Front window and porch sizing/locations vary based on elevations, see agent for detailed drawings. ** Sump pump is for eQuinelle only. Prices, dimensions and specifications are subject to change without notice. All renderings are artist's concept. E. & O. E. June 2025.