



Artist's concept. E.&O.E.

Designer Finished Homes  
**SUITE 809**  
1,280 SQ. FT. - MODEL 26





530  
TERRACES  
AT GREYSTONE

570  
TERRACES  
AT GREYSTONE

Artist's concept. E.&O.E.

Designer Finished Homes

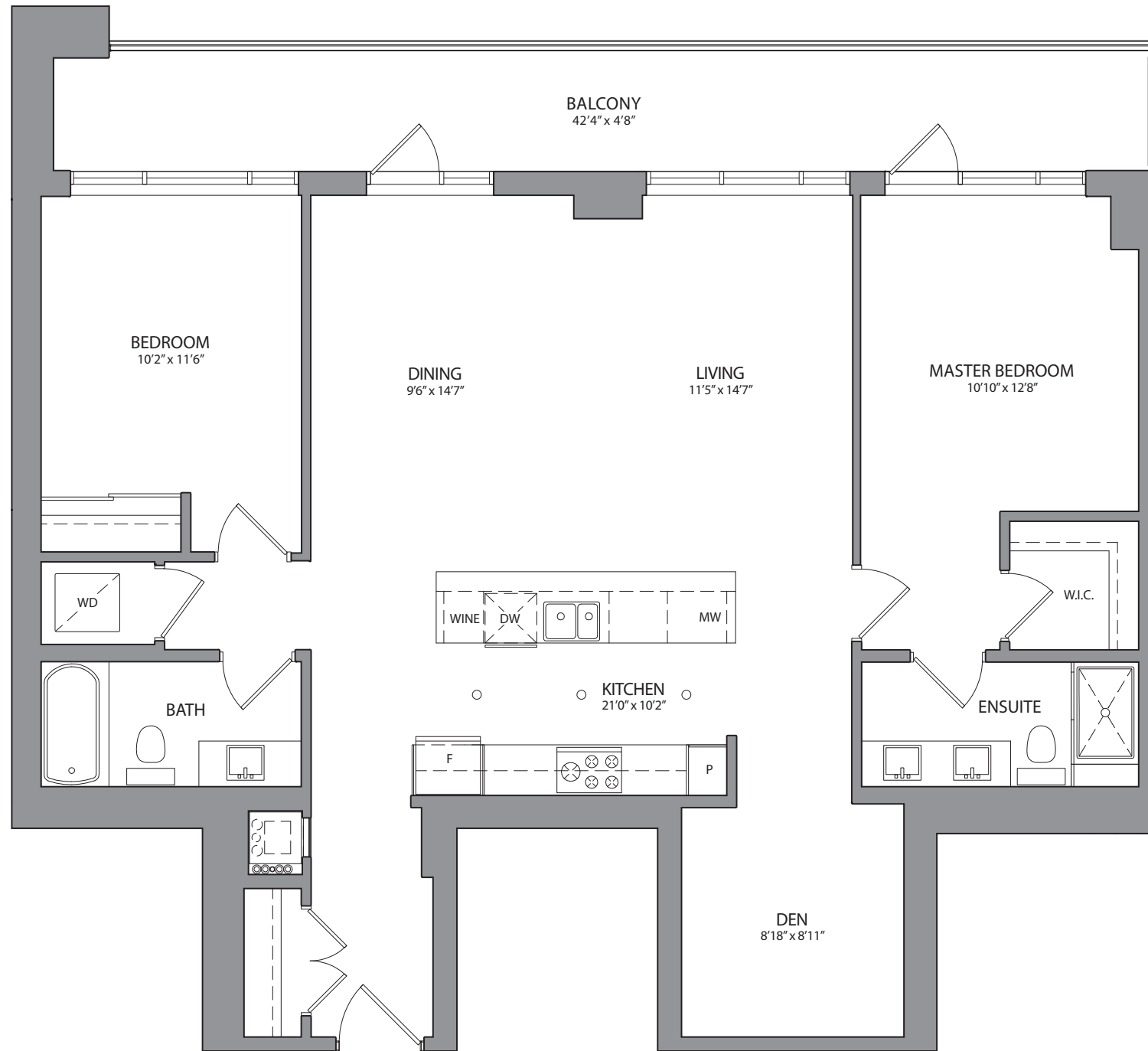
# SUITE 809

1,280 SQ. FT. - MODEL 26

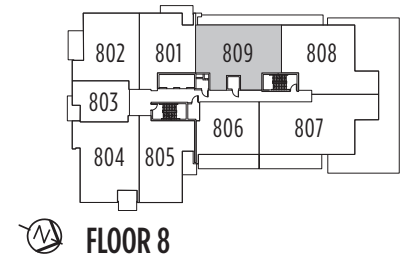
Our award-winning Interior Design Team has hand selected all of the show-stopping features and finishes in this unique eQ Designer Finished Home. Your future home boasts a harmonious blend of the finest interior appointments, all designed to enrich your life.



Designer Finished Homes  
**SUITE 809**  
 1,280 SQ. FT.  
 WITH 213 SQ. FT. BALCONY  
 MODEL 26

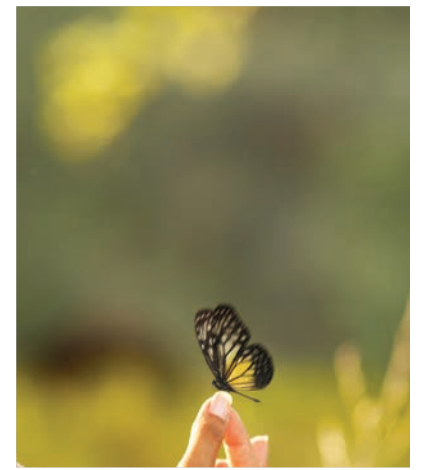


All drawings are artist's concept and may vary slightly from the final product. Actual usable floorspace may vary from stated area, and square footage has been calculated based on usable living space according to the TARIION rules and does not include garage or unfurnished basement areas. Drawings may show optional features which may not be included in the base price. Bulkheads & box outs may be required as chases for plumbing & mechanical. Garage main door location, if applicable, may vary subject to grade. Specifications subject to change without notice. Manufacturers' images are shown and may differ from the final product. E. & O.E. September 2020.

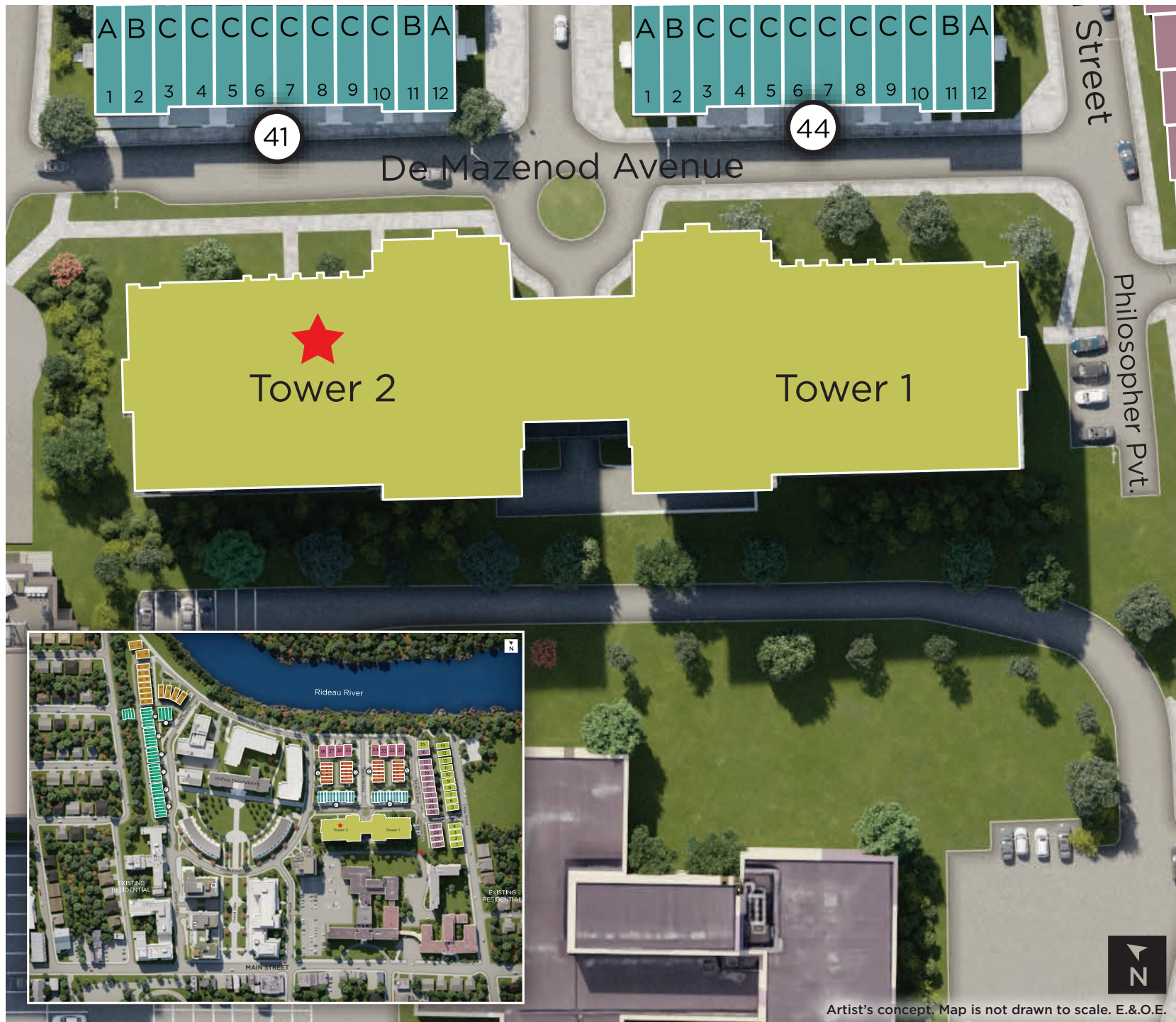




# OUR COMMUNITY



THE COMMUNITY  
SITE PLAN



Artist's concept. Map is not drawn to scale. E.&O.E.

Luxury meets modern sophistication in Suite 809. Experience a fusion of elegant design with high-end, brand-name appointments such as Silestone countertops, sleek Moen fixtures, custom-designed kitchen cabinetry, exquisite engineered hardwood floors, top-of-the-line appliances. Welcome home to the refined living of Suite 809 at Greystone Village.

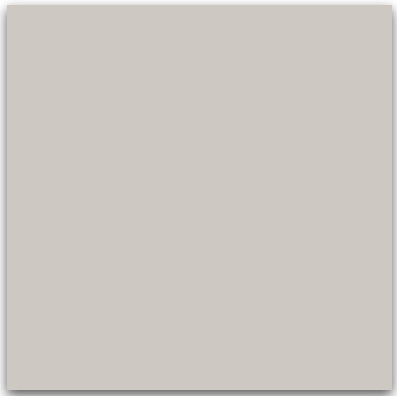
MAKE A GRAND ENTRANCE  
WITH AN EXQUISITE  
DOOR HARDWARE, FLOOR &  
TRIM PACKAGE

INTERIOR

1



2



3



4



5



E.&O.E.

1

**HARDWOOD FLOORING**  
Torlys Coastal Villa Oak  
HCU66227

2

**INTERIOR PAINT**  
Sherwin Williams  
- Repose Grey

3

**INTERIOR DOOR HARDWARE**  
Erie Lever Handles -  
Brushed Chrome

4

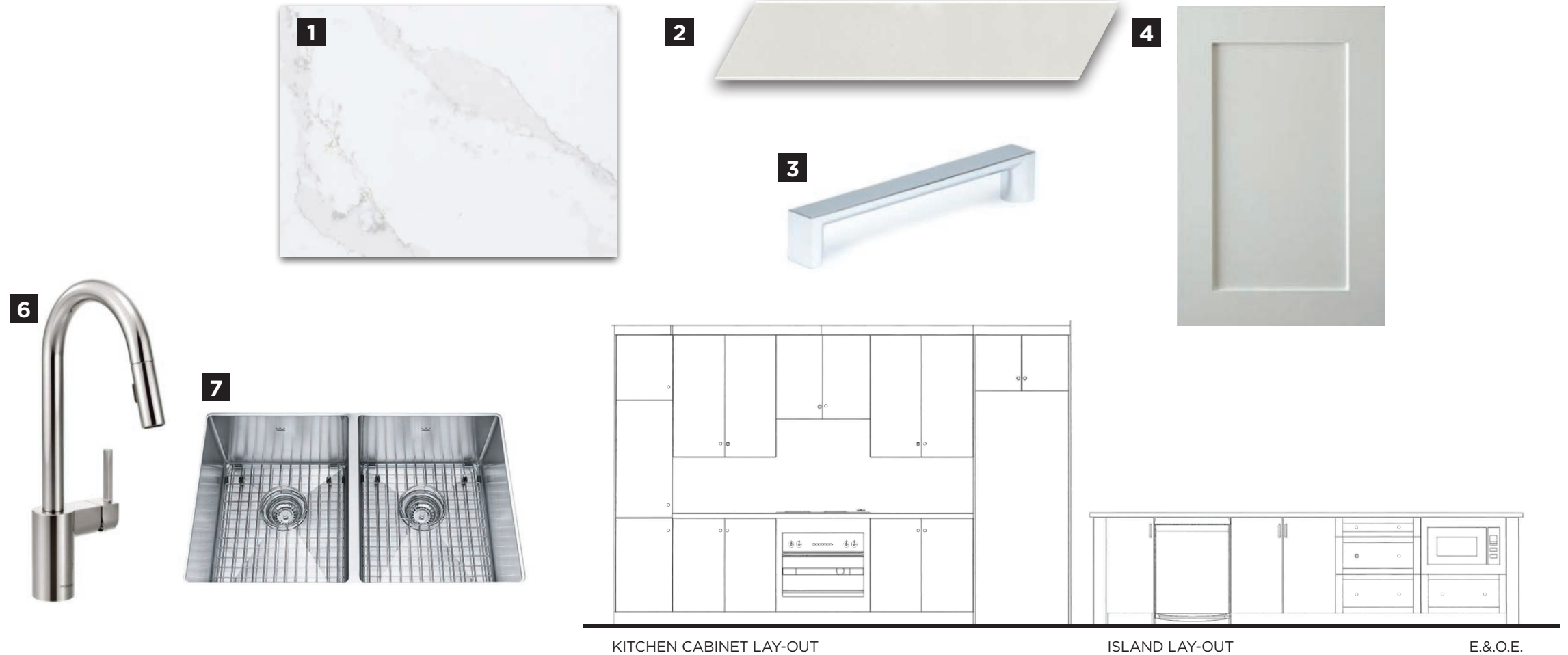
**TRIM PACKAGE**  
2828-9 Baseboard, L3513-9 Casing &  
4086-9 Shoe

5

**INTERIOR DOORS**  
Madison Interior  
Doors

A GREAT RECIPE STARTS WITH A  
**GOURMET CHEF KITCHEN**

**GOURMET KITCHEN**



KITCHEN CABINET LAY-OUT

ISLAND LAY-OUT

E.&O.E.

**1**

**COUNTERTOP**  
 Silestone  
 Quartz - Eternal  
 Calacatta Gold

**2**

**BACKSPLASH**  
 Olympia 2x9 Colour &  
 Dimension Collection -  
 Chevron - Dove Grey Gloss

**3**

**DOOR PULL**  
 64160-4PC

**4**

**CABINETRY**  
 Shaker  
 Thermofoil  
 151 - White

**5**

**KITCHEN FAUCET**  
 Moen Align Single  
 Hole Pull Down  
 Chrome - 7565

**6**

**KITCHEN SINK**  
 Kindred  
 KCUD30-9-10BG



SLEEK APPLIANCES  
THAT LOOK GOOD AND  
PERFORM BETTER

# APPLIANCES



**1**  
HOOD FAN  
Faber  
CRIS30SSH300

**2**  
COOKTOP  
AEG 75040GM-M-F

**3**  
WALL OVEN  
AEG B3007H-B

**4**  
MICROWAVE  
Panasonic  
NNST775S c/w  
NNTK722S Trim Kit

**5**  
DISHWASHER  
Blomberg  
DW51600FBI

**6**  
WINE FRIDGE  
Silhouette  
Tuscany - DW-  
C031D1BSSPR

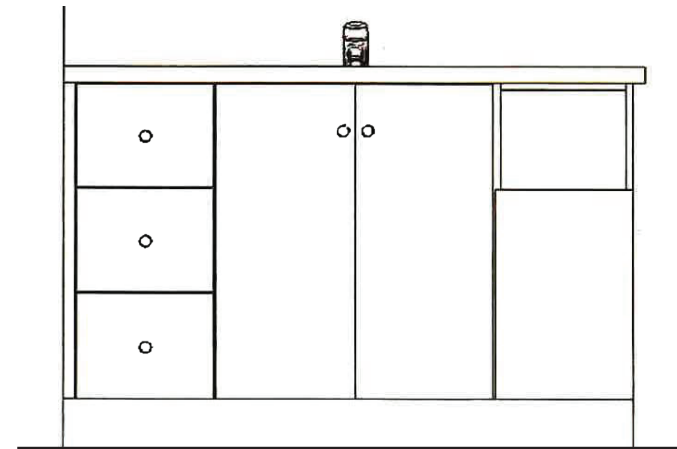
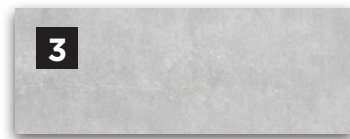
**7**  
REFRIGERATOR  
Liebherr CS  
1400R-IM

**8**  
WASHER & DRYER  
Blomberg WM772200Q  
Washer & Blomberg  
DV17600W Dryer

E.&O.E.

**FULL BATHROOMS**  
A BLEND OF LUXURY  
& MODERNITY

**MAIN BATH**



MAIN BATH CABINET LAY-OUT

E.&O.E.

**1**

**COUNTERTOP**  
Silestone  
Quartz -  
Grey Expo

**2**

**SHOWER WALL TILE**  
Ceratec Mirage  
8x24 Horizontal  
Stacked Pattern -  
Glossy White

**3**

**FLOORING**  
Euro 12x24  
Pasha Nexus -  
Ice

**4**

**CABINETRY**  
Shaker  
Thermofoil 151  
- White

**5**

**VANITY SINK**  
American  
Standard  
Studio  
0614.000

**6**

**DOOR PULL**  
64160-4PC

**7**

**TOILET**  
American  
Standard  
Studio Dual  
Flush

**8**

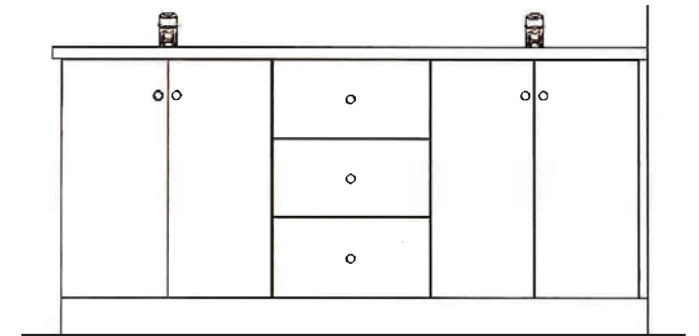
**VANITY FAUCET**  
Moen Method  
Single Hole  
Chrome - 6810

**9**

**TUB/SHOWER FIXTURE**  
Moen Method Posi-  
Temp Chrome Tub/  
Shower - T62803

**A SUMPTUOUS MASTER ENSUITE  
YOUR COZY PRIVATE RETREAT**

**ENSUITE**



ENSUITE CABINET LAY-OUT

E.&O.E.

**1**

**COUNTERTOP**  
Silestone  
Quartz -  
Grey Expo

**2**

**SHOWER WALL  
TILE**  
Ceratec Mirage  
8x24 Horizontal  
Stacked Pattern  
- Glossy White

**3**

**ENSUITE  
SHOWER  
FLOOR**  
Maax B3

**4**

**FLOORING**  
Ceratec Paros  
12x24- 1/3  
Offset Pattern  
- Taupe

**5**

**CABINTRY**  
Shaker  
Thermofoil 151  
- White

**6**

**VANITY SINK**  
American  
Standard  
Studio  
0614.000

**7**

**DOOR PULL**  
64160-4PC

**8**

**TOILET**  
American  
Standard  
Studio Dual  
Flush

**9**

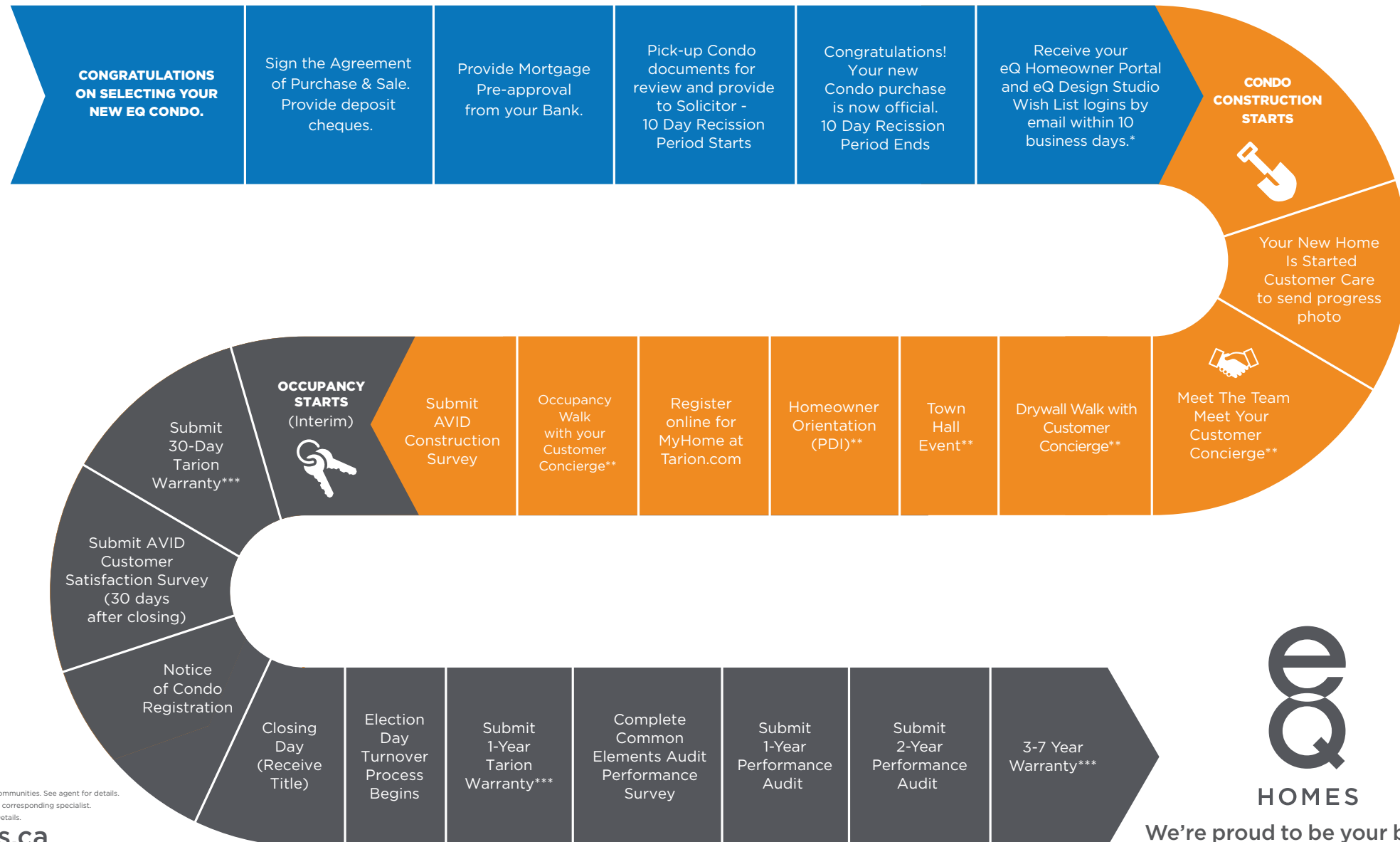
**VANITY  
FAUCET**  
Moen Method  
Single Hole  
Chrome -  
6810

**10**

**TUB/SHOWER  
FIXTURE**  
Moen Method Posi-  
Temp Chrome Shower  
with Moen Engage  
26100EP -T62803

# The eQ Designer Finished Condo Buyer's Journey.

**Enduring Quality.** It starts with the design of your eQ Home and continues throughout the entire home buying process. We will be by your side, step by step, answering your questions - before, during and after construction. Because the qualities of confidence and peace of mind should endure longest of all



**HOMES**

We're proud to be your builder.

\* Wish List not available for all communities. See agent for details.

\*\* Dates to be sent via email from corresponding specialist.

\*\*\* See your Tarion Warranty for Details.

223 MAIN STREET, OTTAWA, ON  
K1S 1C5  
TEL: 613-569-3043  
EMAIL: [sales@greystonevillage.ca](mailto:sales@greystonevillage.ca)



All drawings are artist's concept and may vary slightly from the final product. Actual usable floorspace may vary from stated area, and square footage has been calculated based on usable living space according to the TARION rules and does not include garage or unfurnished basement areas. Drawings may show optional features which may not be included in the base price. Bulkheads & box outs may be required as chases for plumbing & mechanical. Garage main door location, if applicable, may vary subject to grade. In an ongoing review of homeowner's needs, changes may have been incorporated into our "New Home Features" and construction techniques. Specifications subject to change without notice. Manufacturers' images are shown and may differ from the final product. E. & O.E. September 2020.