

THE  
SPENCER  
AT GREYSTONE



DESIGNER  
FINISHED  
SUITES

**SUITE 806**  
**MODEL 23 | 1,663 SQ. FT. | 2 BED + DEN | 2 BATH**

# A REFINED LIFESTYLE

Natural oak engineered hardwood flooring shines throughout this magnificent 2 Bed+Den suite with two balconies. Exquisite quartz countertop with matching quartz backsplash elevate the modern designer kitchen. Designer matte black single-lever Moen fixtures and contemporary undermount stainless steel sink speak to understated luxury. Welcome to a whole new level of refined living.

Live in the heart of Greystone Village, a visionary, master planned community located between two of Ottawa's most picturesque waterways. Stroll along charming streetscapes through the vital and bustling community, then take a path along the Rideau River and you will find yourself amidst simply spectacular natural green spaces. Greystone Village is the ultimate address in Ottawa, redefining modern life.

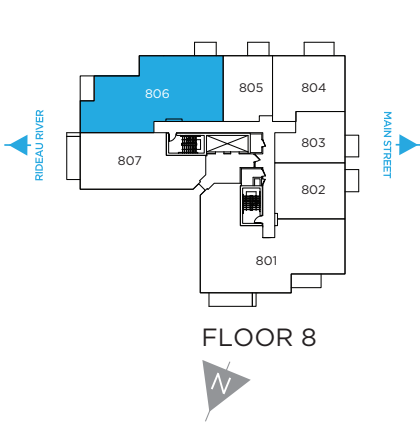


# DESIGNER FINISHED SUITE

SUITE 806

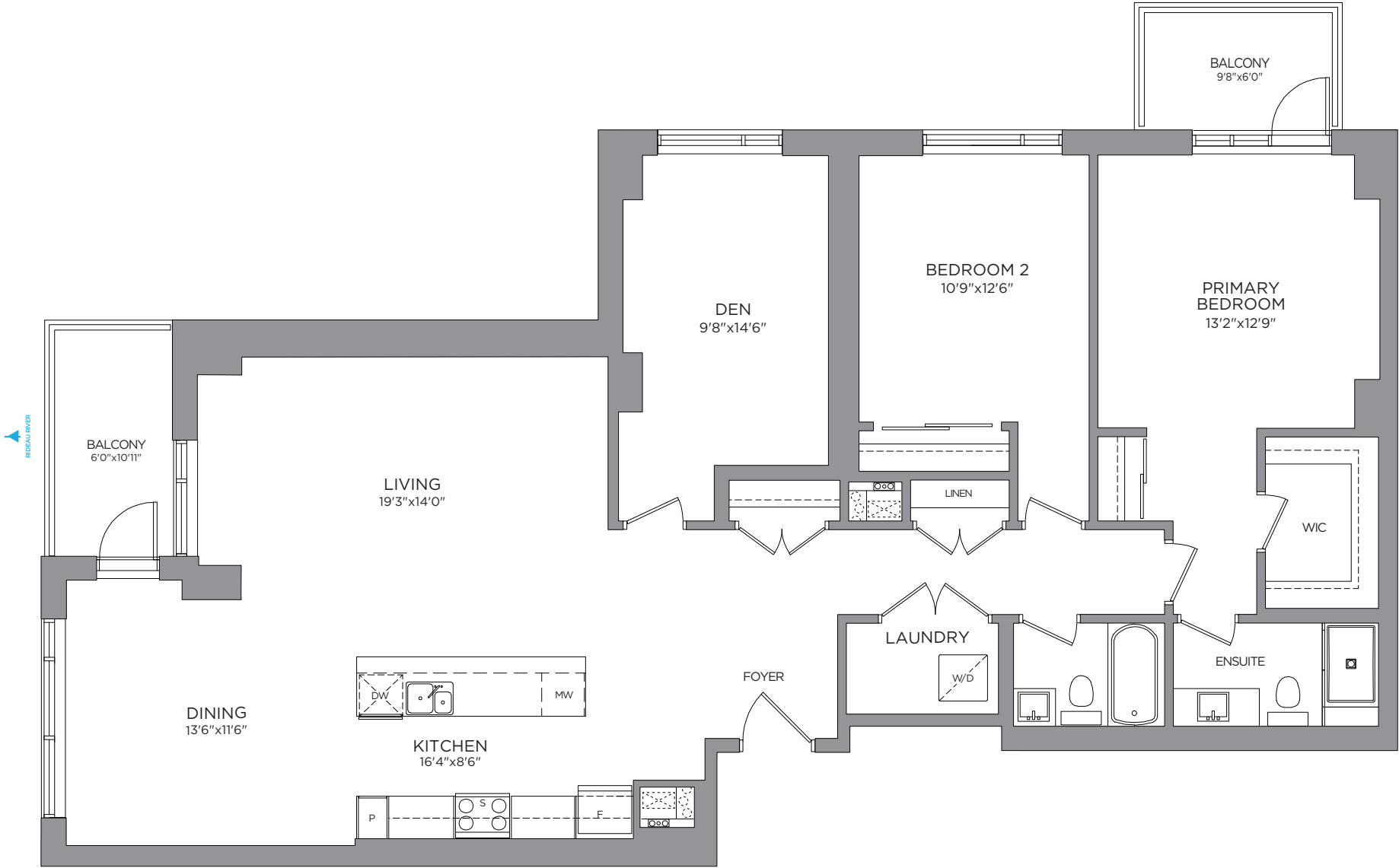
MODEL 23  
1,663 SQ. FT.

2 BED + DEN | 2 BATH



THE  
SPENCER  
AT GREYSTONE

Prices, dimensions and specifications are subject to change without notice. All renderings are artist's concept. E. & O.E. June 2024.



# DESIGNER FINISHED SUITE

## LUXURY LIVING

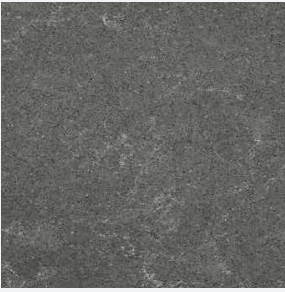
Opulent marble style quartz countertops and backsplash with luxurious white oak flooring throughout. Captivating black accents in the primary ensuite add dramatic flair. Don't miss your chance to experience the height of luxury living in this stunning condo.

### SUITE FLOORING

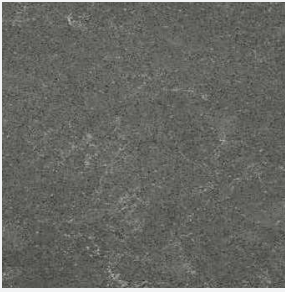


**FLOORING**  
Pebble Oak Engineered  
Hardwood

### KITCHEN



**COUNTERTOP**  
Embrace Quartz



**BACKSPLASH**  
Embrace Quartz

### BATHROOM/ENSUITE



**CABINET**  
D cor Maple  
Shale



**MAIN BATH  
WALLS**  
Pecora Glossy White



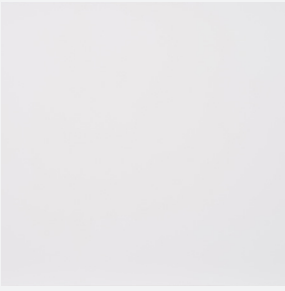
**MAIN BATH  
COUNTERTOP**  
Miami Vena Quartz



**BATH FLOOR**  
Westside  
Silver



**PAINT**  
Zurich White



**CABINET**  
High Gloss White



**ENSUITE WALL**  
Arctic White Chevron



**ENSUITE  
COUNTERTOP**  
Ethereal Dusk Quartz

Colour and specifications  
are subject to change  
without notice. E. & O.E.

# WELL APPOINTED DETAILS

ENJOY THE PLETHORA OF **UPGRADED FIXTURES**



**KITCHEN FAUCET**  
MOEN 1-Handle Lever  
Kitchen Faucet  
Matte Black



**KITCHEN SINK**  
Dropdown  
Stainless Steel



**VANITY FAUCET**  
MOEN Align  
Single Handle  
Matte Black



**ENSUITE HAND  
SHOWER**  
MOEN Engage  
Matte Black



**VANITY FAUCET**  
MOEN Align  
Single Handle  
Matte Black



**MAIN BATH SHOWER**  
Moen Align Posi-Temp  
Matte Black



# APPLIANCES

ENJOY THE EASE AND LUXURY OF LIFE WITH THE HELP OF  
**MODERN APPLIANCES**



**FRIDGE**  
24" Blomberg  
Fridge



**BAR FRIDGE**  
Frigidaire  
Gallery 5.3 cu. ft.



**DISHWASHER**  
24" Blomberg  
Tall Tub Panel Ready Dishwasher



**WASHER**  
24" Samsung  
Washing Machine



**MICROWAVE**  
Panasonic  
Over The Range  
Microwave



**OVEN**  
30" Blomberg Slide-In  
Electric Range



**DRYER**  
24" Samsung  
Dryer

# THE SPENCER

AT GREYSTONE



Contact your **Spencer Sales and Leasing Consultant** to book an appointment.

**LINDSAY CALLIHOO**

Sales and Leasing Consultant

TEL: 613-569-3043

EMAIL: [thespencer@greystonevillage.ca](mailto:thespencer@greystonevillage.ca)

**THE SPENCER SALES OFFICE:**

223 Hazel St, Ottawa, ON K1S 1C4

All drawings are artist's concept and may vary slightly from the final product. Actual usable floorspace may vary from stated area, and square footage has been calculated based on usable living space according to the TARION rules and does not include garage or unfurnished basement areas. Drawings may show optional features which may not be included in the base price. Bulkheads & box outs may be required as chases for plumbing & mechanical. Garage main door location, if applicable, may vary subject to grade. In an ongoing review of homeowner's needs, changes may have been incorporated into our "New Home Features" and construction techniques. Specifications subject to change without notice. Manufacturers' images are shown and may differ from the final product. E. & O.E. November 2024.

