

THE
SPENCER
AT GREYSTONE



DESIGNER
FINISHED
SUITES

SUITE 806
MODEL 23 | 1,663 SQ. FT. | 2 BED + DEN | 2 BATH

A REFINED LIFESTYLE

Natural oak engineered hardwood flooring shines throughout this magnificent 2 Bed+Den suite with two balconies. Exquisite quartz countertop with matching quartz backsplash elevate the modern designer kitchen. Designer matte black single-lever Moen fixtures and contemporary undermount stainless steel sink speak to understated luxury. Welcome to a whole new level of refined living.

Live in the heart of Greystone Village, a visionary, master planned community located between two of Ottawa's most picturesque waterways. Stroll along charming streetscapes through the vital and bustling community, then take a path along the Rideau River and you will find yourself amidst simply spectacular natural green spaces. Greystone Village is the ultimate address in Ottawa, redefining modern life.

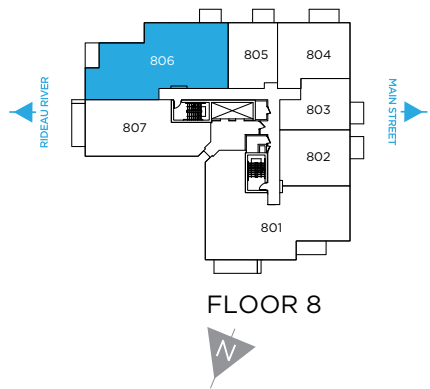


DESIGNER FINISHED SUITE

SUITE 806

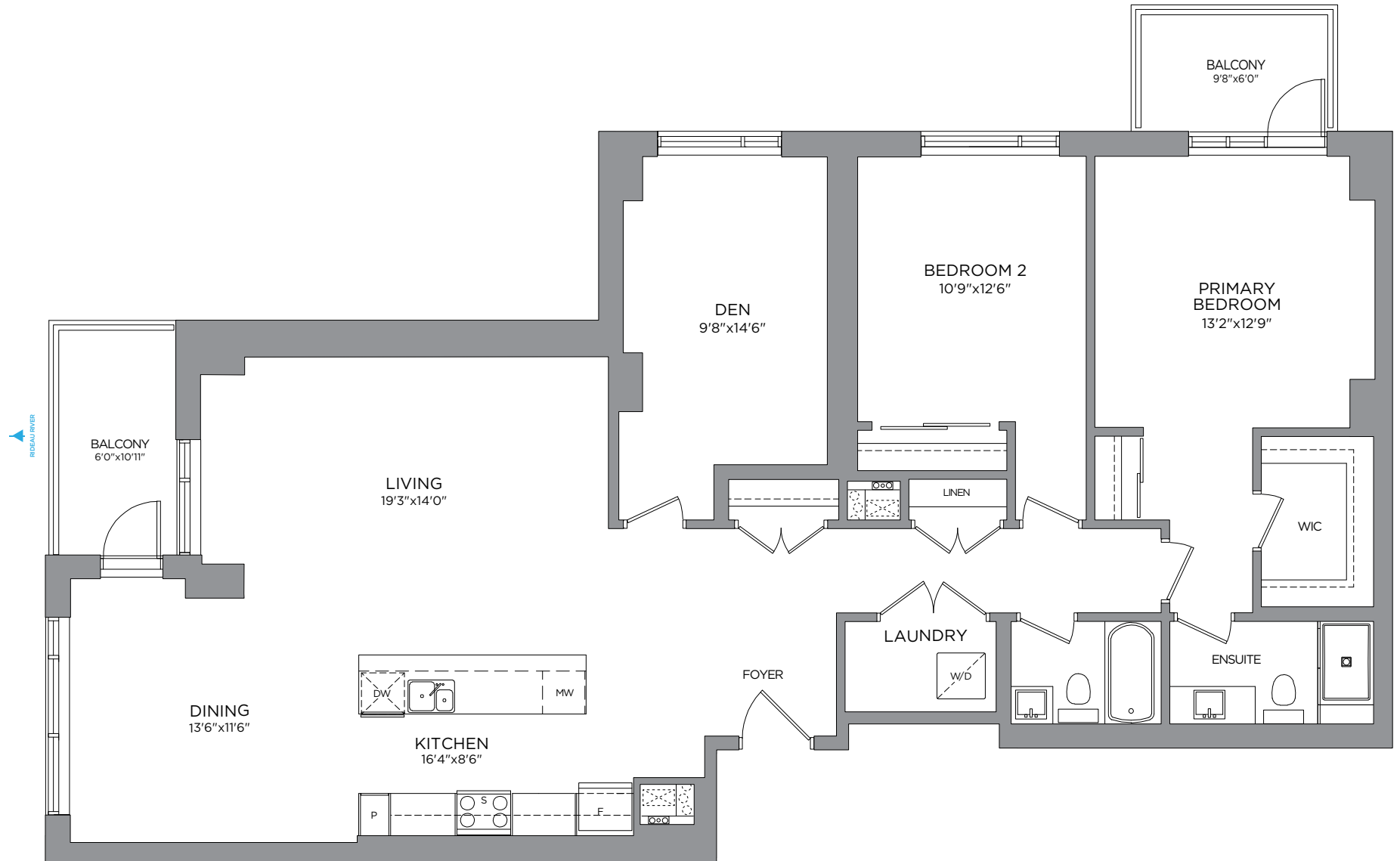
MODEL 23
1,663 SQ. FT.

2 BED + DEN | 2 BATH



THE
SPENCER
AT GREYSTONE

Prices, dimensions and specifications are subject to change without notice. All renderings are artist's concept. E. & O.E. June 2024.



DESIGNER FINISHED SUITE

LUXURY LIVING

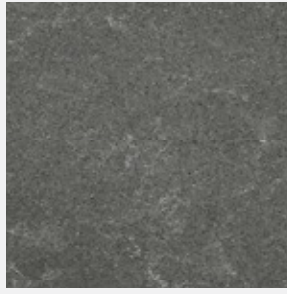
Opulent marble style quartz countertops and backsplash with luxurious white oak flooring throughout. Captivating black accents in the primary ensuite add dramatic flair. Don't miss your chance to experience the height of luxury living in this stunning condo.

SUITE FLOORING

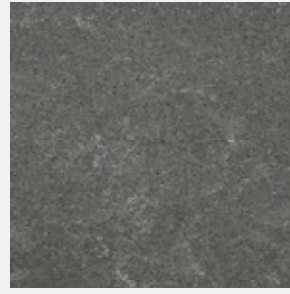


FLOORING
Pebble Oak Engineered
Hardwood

KITCHEN

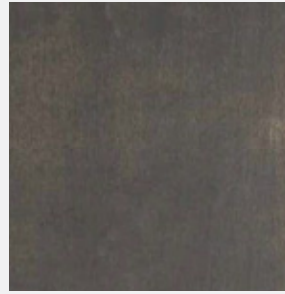


COUNTERTOP
Embrace Quartz



BACKSPLASH
Embrace Quartz

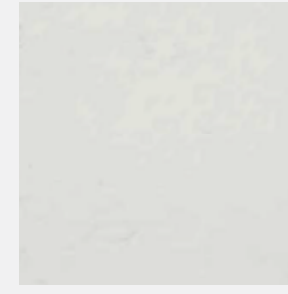
BATHROOM/ENSUITE



CABINET
Décor Maple
Shale



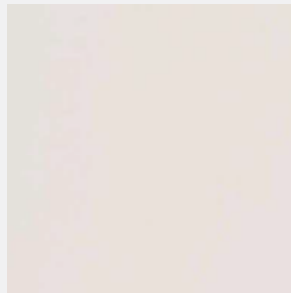
**MAIN BATH
WALLS**
Pecora Glossy White



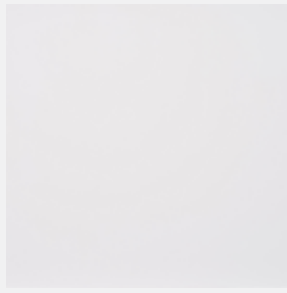
**MAIN BATH
COUNTERTOP**
Miami Vena Quartz



BATH FLOOR
Westside
Silver



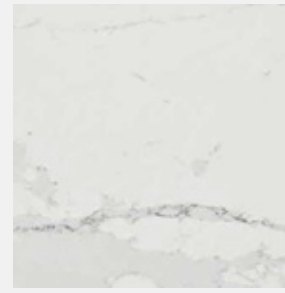
PAINT
Zurich White



CABINET
High Gloss White



ENSUITE WALL
Arctic White Chevron



**ENSUITE
COUNTERTOP**
Ethereal Dusk Quartz

Colour and specifications
are subject to change
without notice. E. & O.E.

WELL APPOINTED DETAILS

ENJOY THE PLETHORA OF **UPGRADED FIXTURES**



KITCHEN FAUCET
MOEN 1-Handle Lever
Kitchen Faucet
Matte Black



KITCHEN SINK
Dropdown
Stainless Steel



VANITY FAUCET
MOEN Align
Single Handle
Matte Black



**ENSUITE HAND
SHOWER**
MOEN Engage
Matte Black



VANITY FAUCET
MOEN Align
Single Handle
Matte Black



MAIN BATH SHOWER
Moen Align Posi-Temp
Matte Black

APPLIANCES

ENJOY THE EASE AND LUXURY OF LIFE WITH THE HELP OF
MODERN APPLIANCES



FRIDGE
24" Blomberg
Fridge



BAR FRIDGE
Frigidaire
Gallery 5.3 cu. ft.



DISHWASHER
24" Blomberg
Tall Tub Panel Ready Dishwasher



WASHER
24" Samsung
Washing Machine



MICROWAVE
Panasonic
Over The Range
Microwave



OVEN
30" Blomberg Slide-In
Electric Range



DRYER
24" Samsung
Dryer

THE
SPENCER
AT GREYSTONE



Contact your **Spencer Sales Consultant** to book an appointment.

CLAUDIA WARNER-JACOBS
New Home Sales Consultant
TEL: 613-569-3043
EMAIL: CWarnerJacobs@eqhomes.ca

THE SPENCER SALES OFFICE:
223 Hazel St, Ottawa, ON K1S 1C4

All drawings are artist's concept and may vary slightly from the final product. Actual usable floorspace may vary from stated area, and square footage has been calculated based on usable living space according to the TARION rules and does not include garage or unfurnished basement areas. Drawings may show optional features which may not be included in the base price. Bulkheads & box outs may be required as chases for plumbing & mechanical. Garage main door location, if applicable, may vary subject to grade. In an ongoing review of homeowner's needs, changes may have been incorporated into our "New Home Features" and construction techniques. Specifications subject to change without notice. Manufacturers' images are shown and may differ from the final product. E. & O.E. June 2024.

