

THE PIPER II (EC)
4 BEDROOM ~ 2,635 SQ. FT.

**2-STOREY
SINGLES**



ELEVATION C

ARTIST'S CONCEPT

THE PIPER II (EC)
4 BEDROOM ~ 2,635 SQ. FT.

**2-STOREY
SINGLES**



ELEVATION M

ARTIST'S CONCEPT

TWO STOREY SINGLES

THE PIPER II (EC) ~ 2,635 SQ. FT.

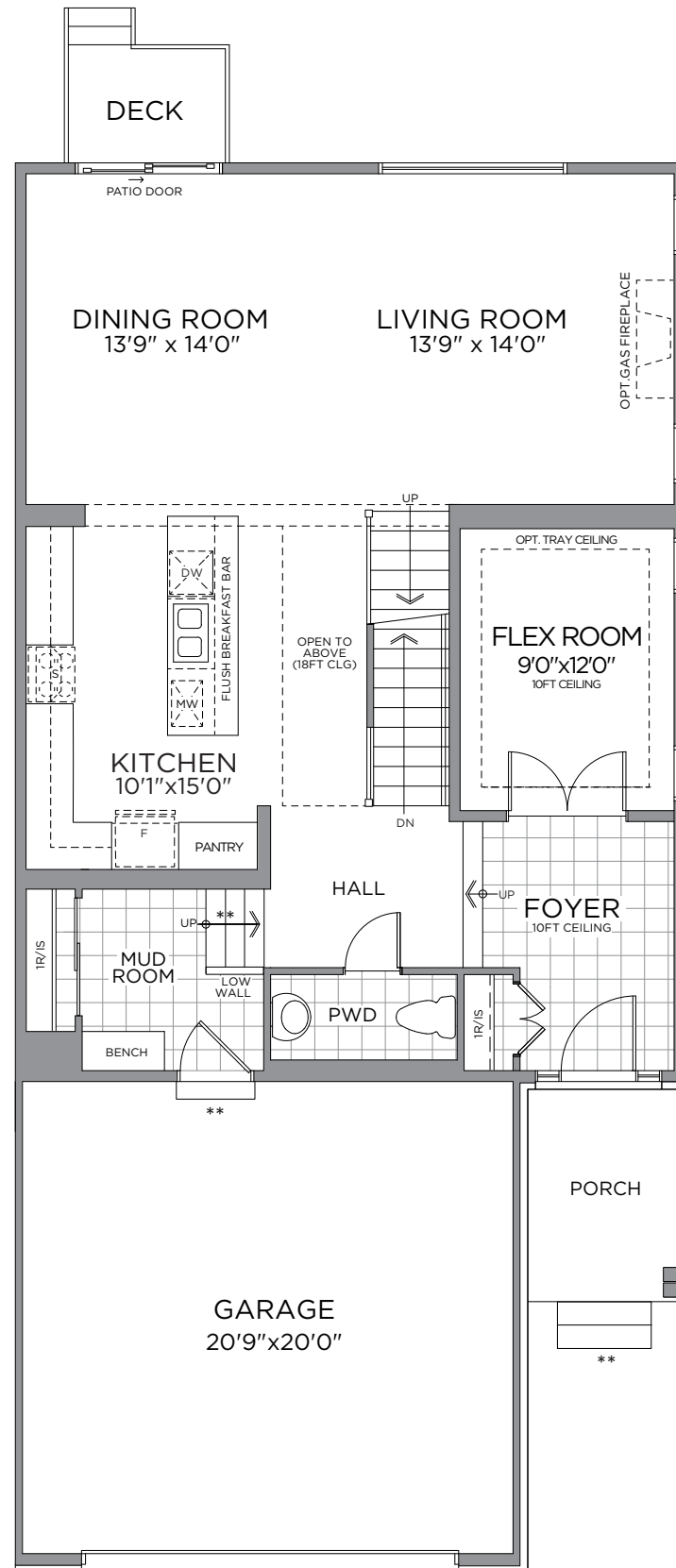
WITH OPTIONAL FINISHED BASEMENT - 3,263 SQ. FT.



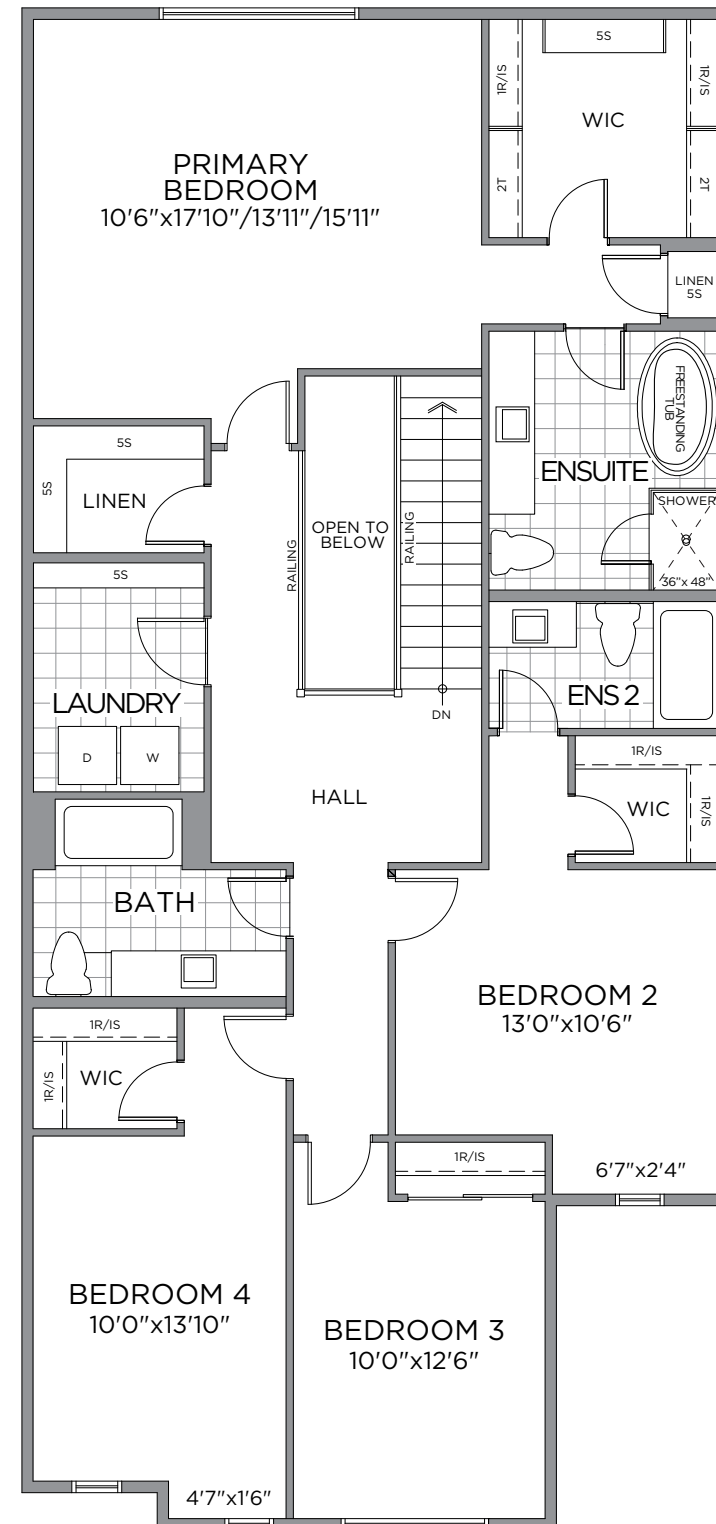
ELEVATION M



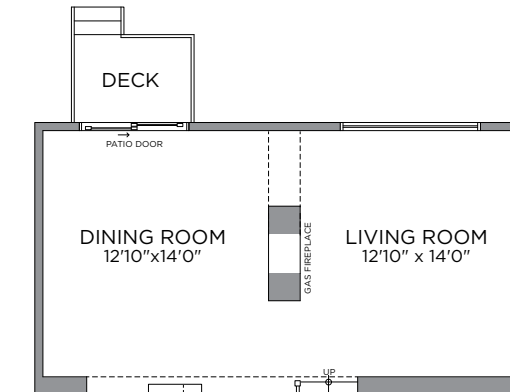
ELEVATION C



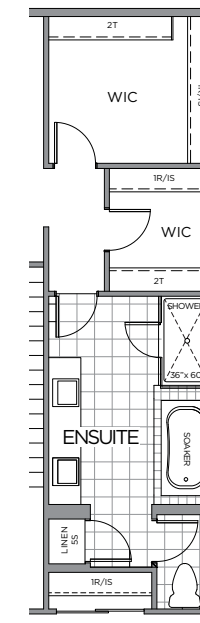
GROUND FLOOR
ELEV. C



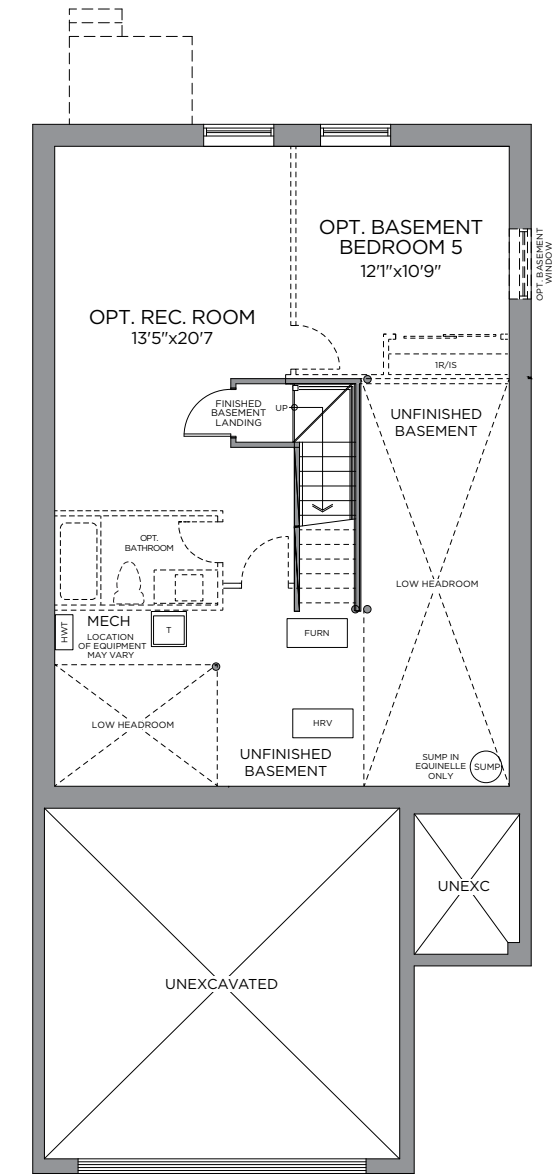
SECOND FLOOR
ELEV. C



OPT. 2-SIDE GAS FIREPLACE
LOCATION



OPT. PRIMARY
ENSUITE



STANDARD BASEMENT PLAN
OPT. FINISHED BASEMENT
610 SQ. FT.

*Front window and porch sizing/locations vary based on elevations, see agent for detailed drawings. ** Number of risers to suit final grade. Prices, dimensions and specifications are subject to change without notice. All renderings are artist's concept. E. & O.E. September 2023.

