

THE PIPER I (EC)
4 BEDROOM ~ 2,242 SQ. FT.

**2-STOREY
SINGLES**



THE PIPER I (EC)
4 BEDROOM ~ 2,242 SQ. FT.

**2-STOREY
SINGLES**



TWO STOREY SINGLES

THE PIPER I (EC) ~ 2,242 SQ. FT.

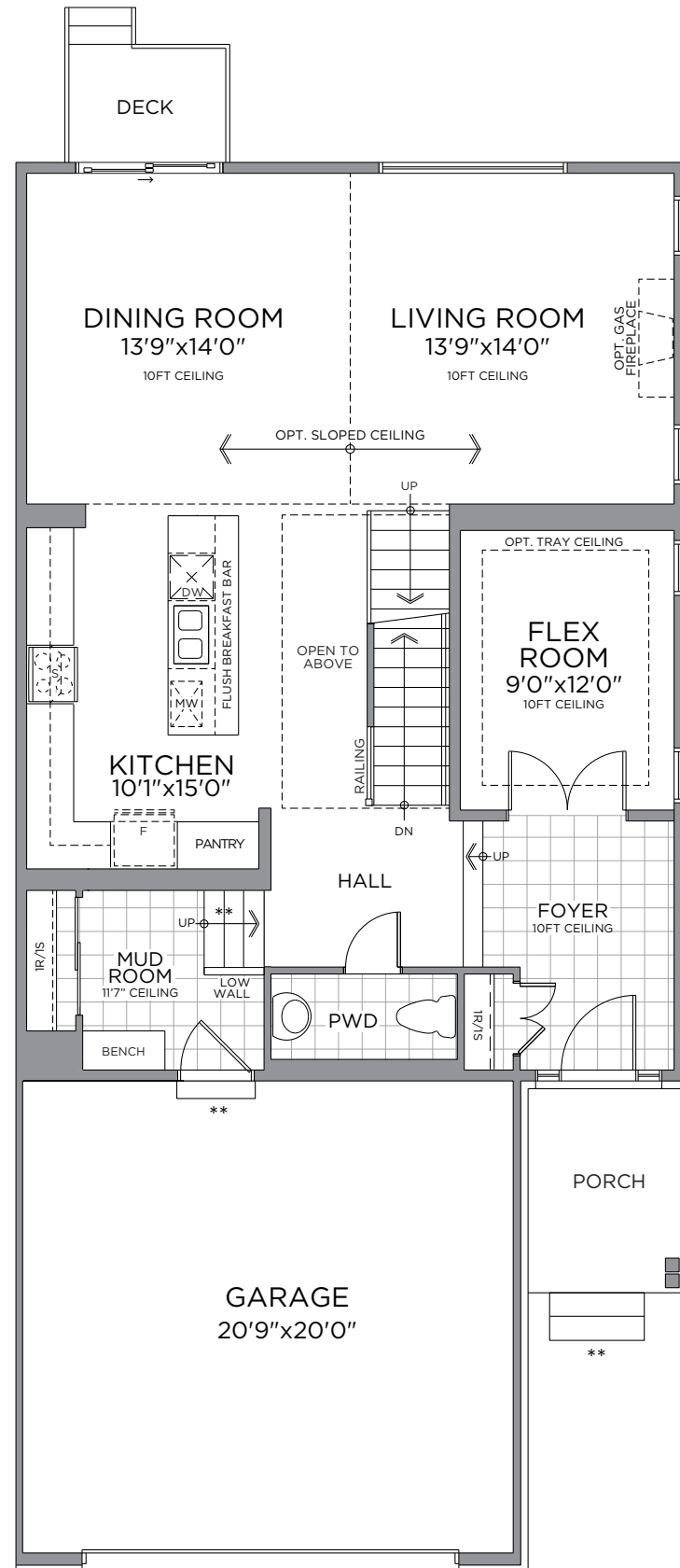
WITH OPTIONAL FINISHED BASEMENT - 2,852 SQ. FT.



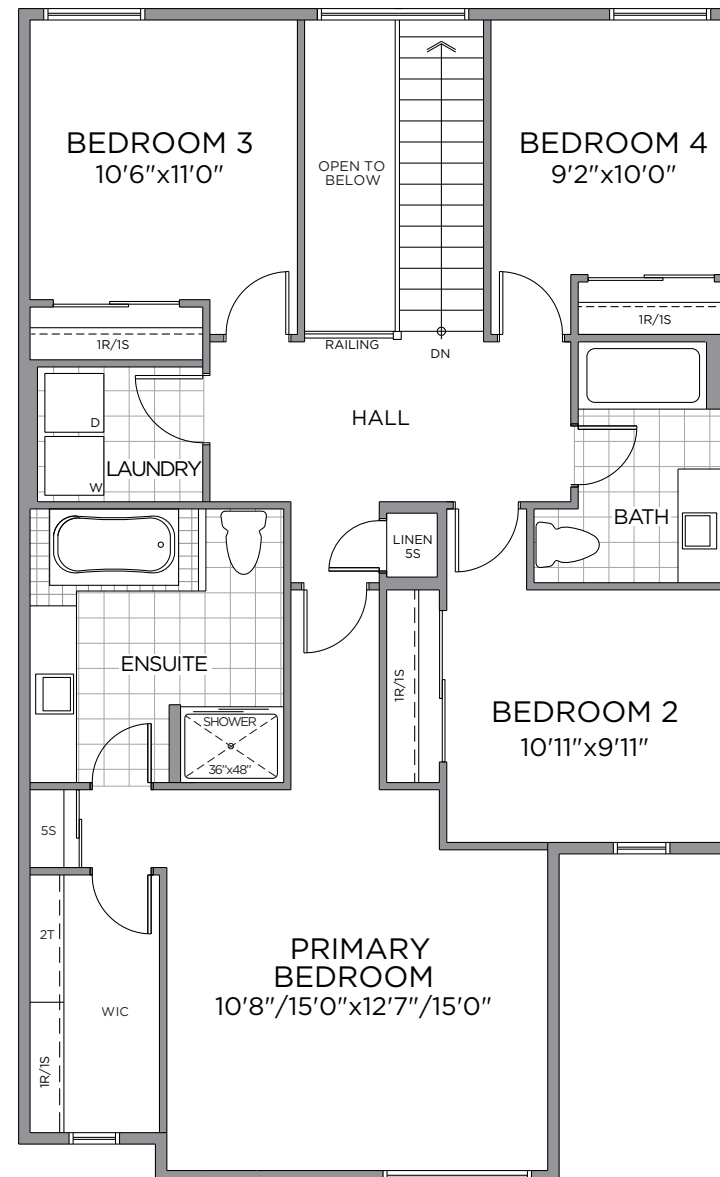
ELEVATION M



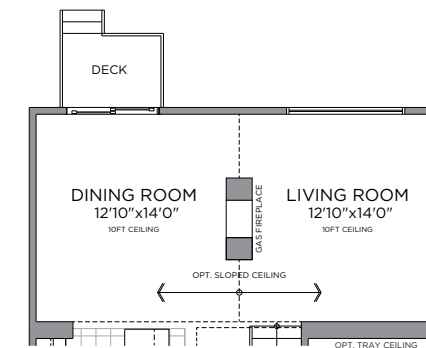
ELEVATION C



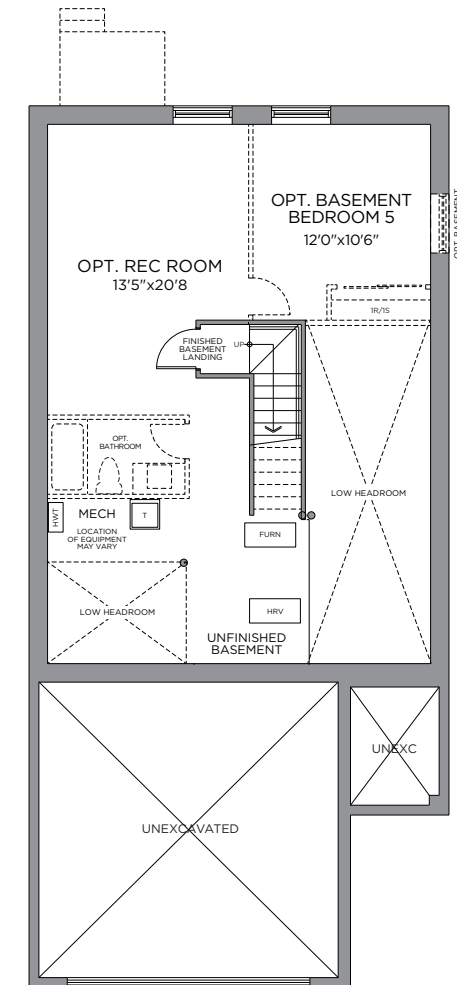
GROUND FLOOR ELEV. C



SECOND FLOOR ELEV. C



OPT. 2-SIDE GAS FIREPLACE LOCATION



STANDARD BASEMENT PLAN OPT. FINISHED BASEMENT 610 SQ. FT.

*Front window and porch sizing/locations vary based on elevations, see agent for detailed drawings. ** Number of risers to suit final grade. Prices, dimensions and specifications are subject to change without notice. All renderings are artist's concept. E. & O.E. September 2023.

