

THE PAISLEY (EC)
3 BEDROOM ~ 2,023 SQ. FT.

**2-STOREY
SINGLES**



ELEVATION M

ARTIST'S CONCEPT

THE PAISLEY (EC)
3 BEDROOM ~ 2,023 SQ. FT.

**2-STOREY
SINGLES**



ELEVATION C

ARTIST'S CONCEPT

**TWO
STOREY
SINGLES**

THE PAISLEY (EC) ~ 2,023 SQ. FT.

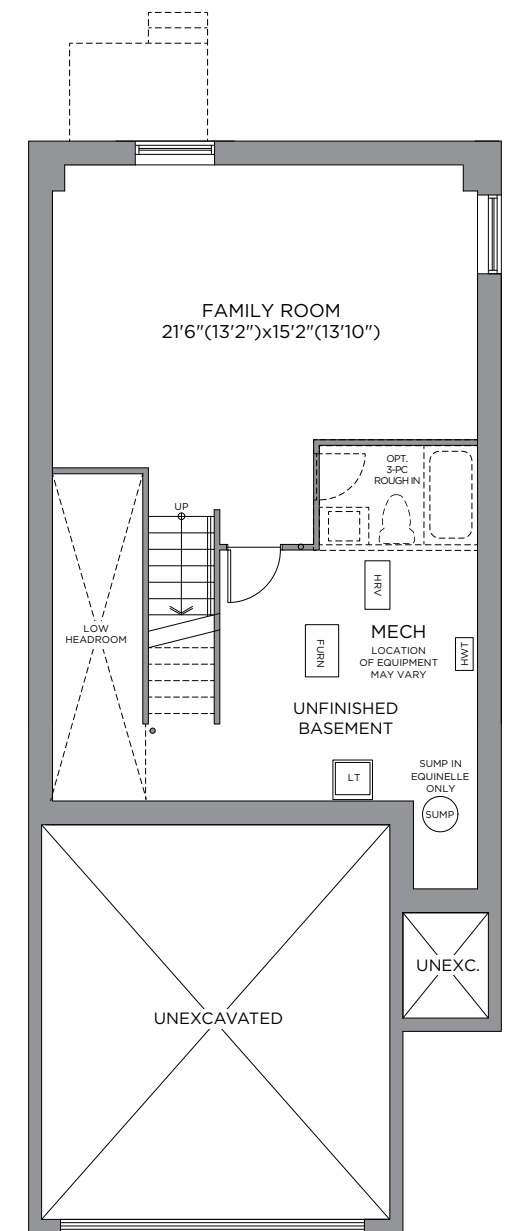
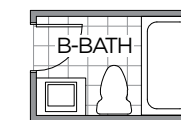
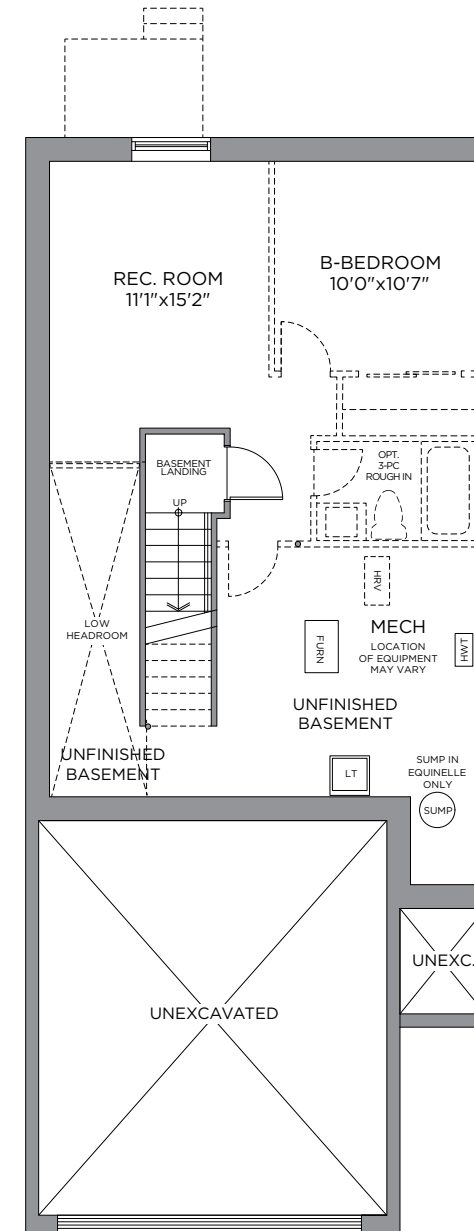
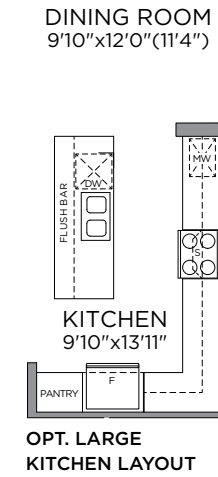
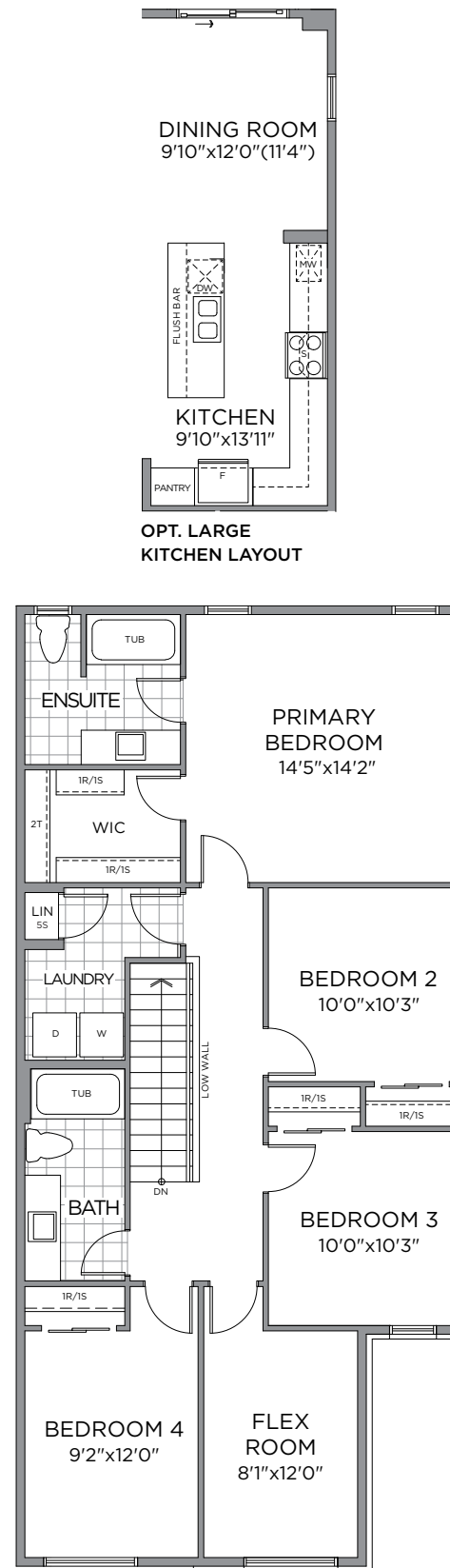
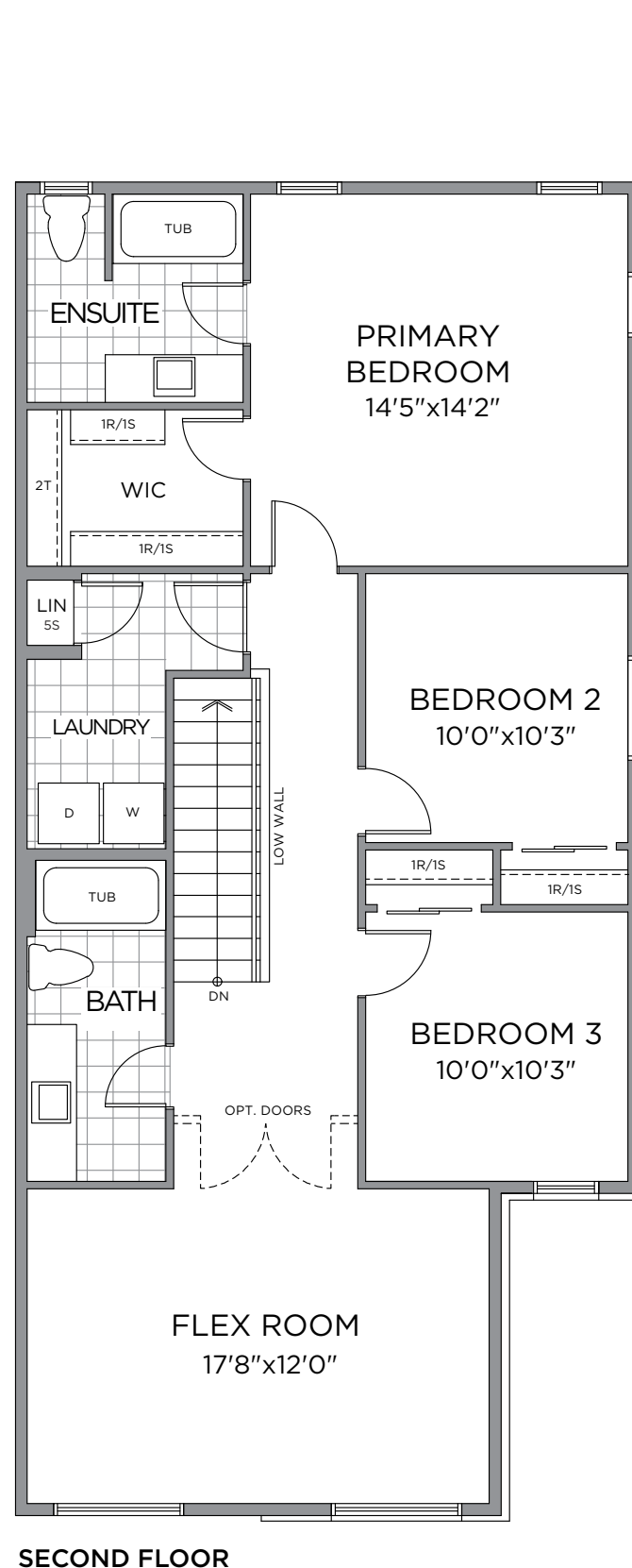
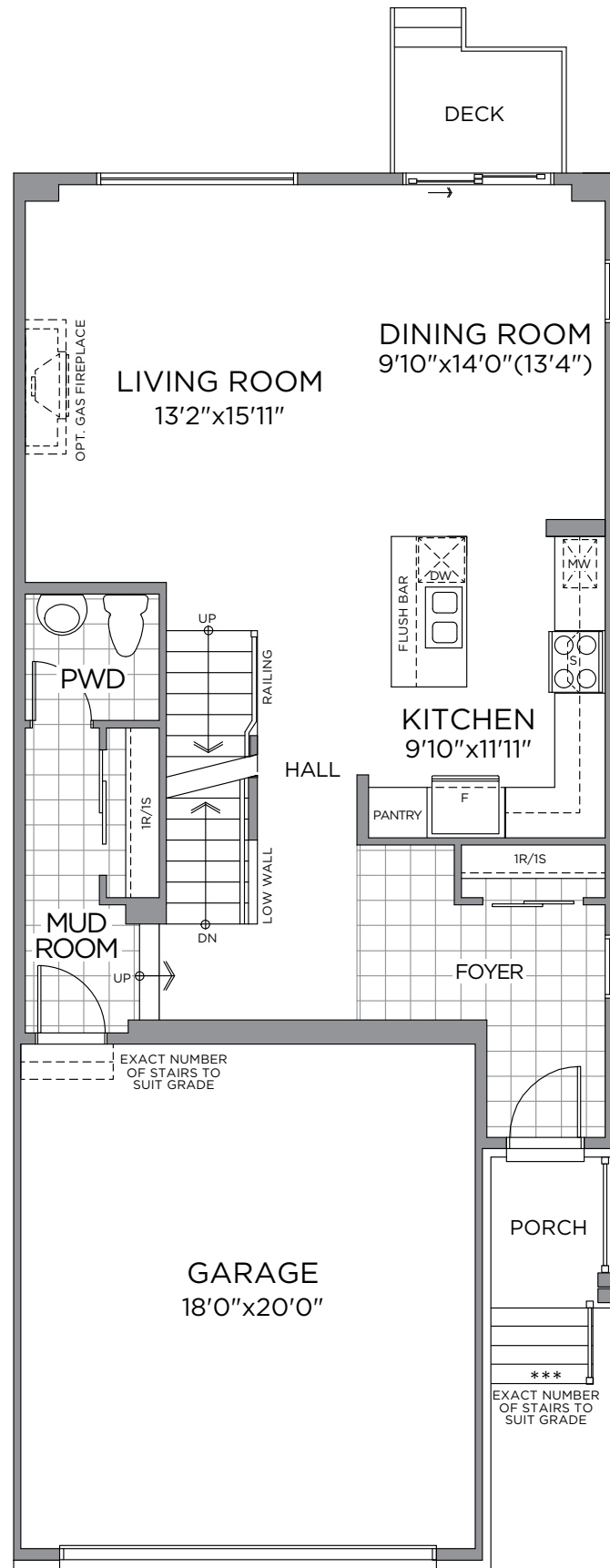
WITH OPTIONAL FINISHED FAMILY ROOM - 2,440 SQ. FT.
WITH OPTIONAL FINISHED BASEMENT - 2,491 SQ. FT.



ELEVATION C



ELEVATION M



**GROUND FLOOR
ELEV. C**

SECOND FLOOR

**OPT. SECOND FLOOR PLAN
W/ OPT. 4 BEDROOM**

**STANDARD BASEMENT PLAN
OPT. FINISHED BASEMENT
468 SQ. FT.**

**OPT. FINISHED BASEMENT FAMILY ROOM
417 SQ. FT.**

*Front window and porch sizing/locations vary based on elevations, see agent for detailed drawings.
** Sump pump is for eQuinelle only. Prices, dimensions and specifications are subject to change without notice. All renderings are artist's concept.
*** Due to lot-specific grading, this model could end up with extra risers and railings on the front porch. E. & O.E. June 2024.

