

**THE OLIVER (EC)**  
4 BEDROOM ~ 2,822 SQ. FT.

**2-STOREY  
SINGLES**



**THE OLIVER (EC)**  
4 BEDROOM ~ 2,822 SQ. FT.

**2-STOREY  
SINGLES**



**TWO  
STOREY  
SINGLES**

# THE OLIVER (EC) ~ 2,822 SQ. FT.

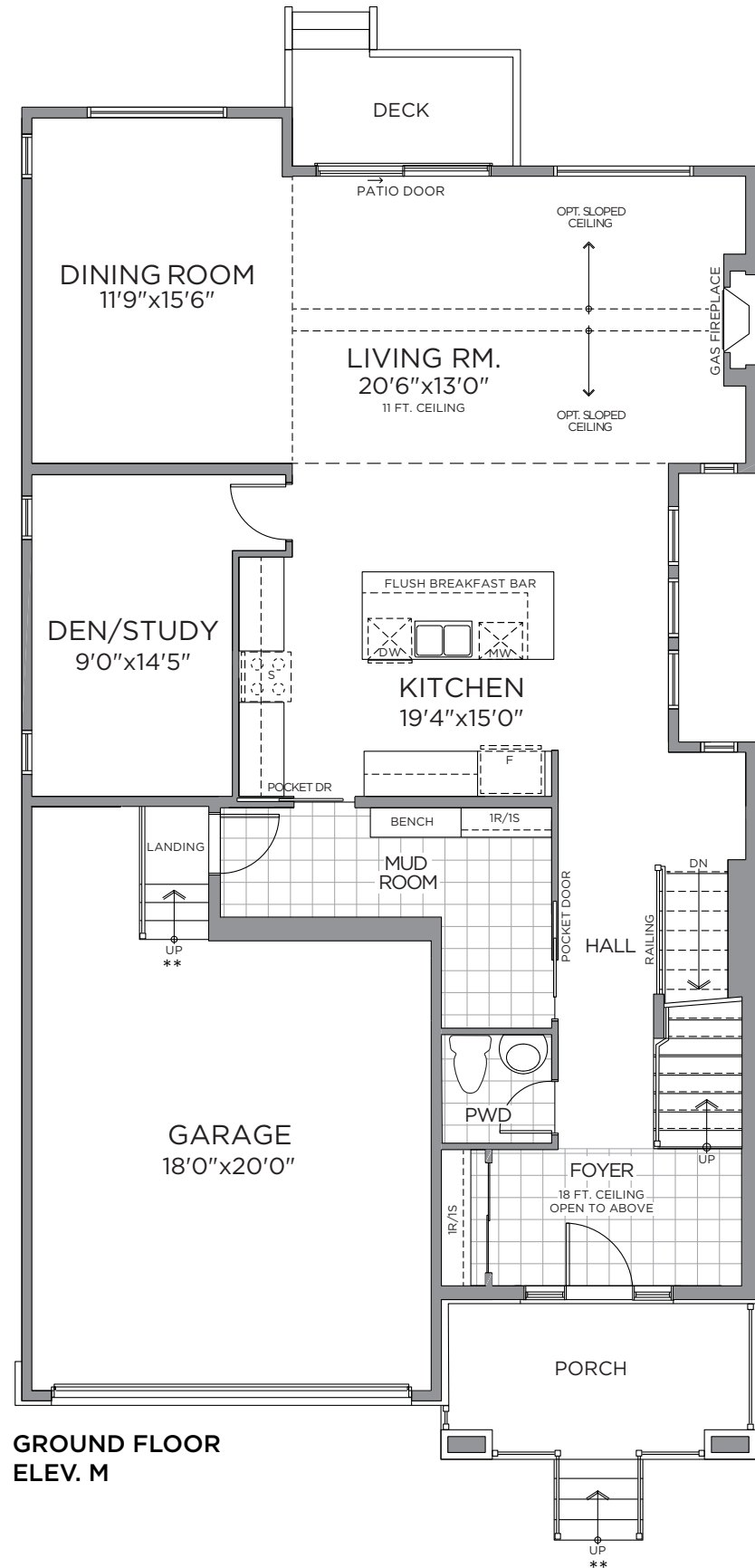
WITH OPTIONAL FINISHED BASEMENT - 3,896 SQ. FT.



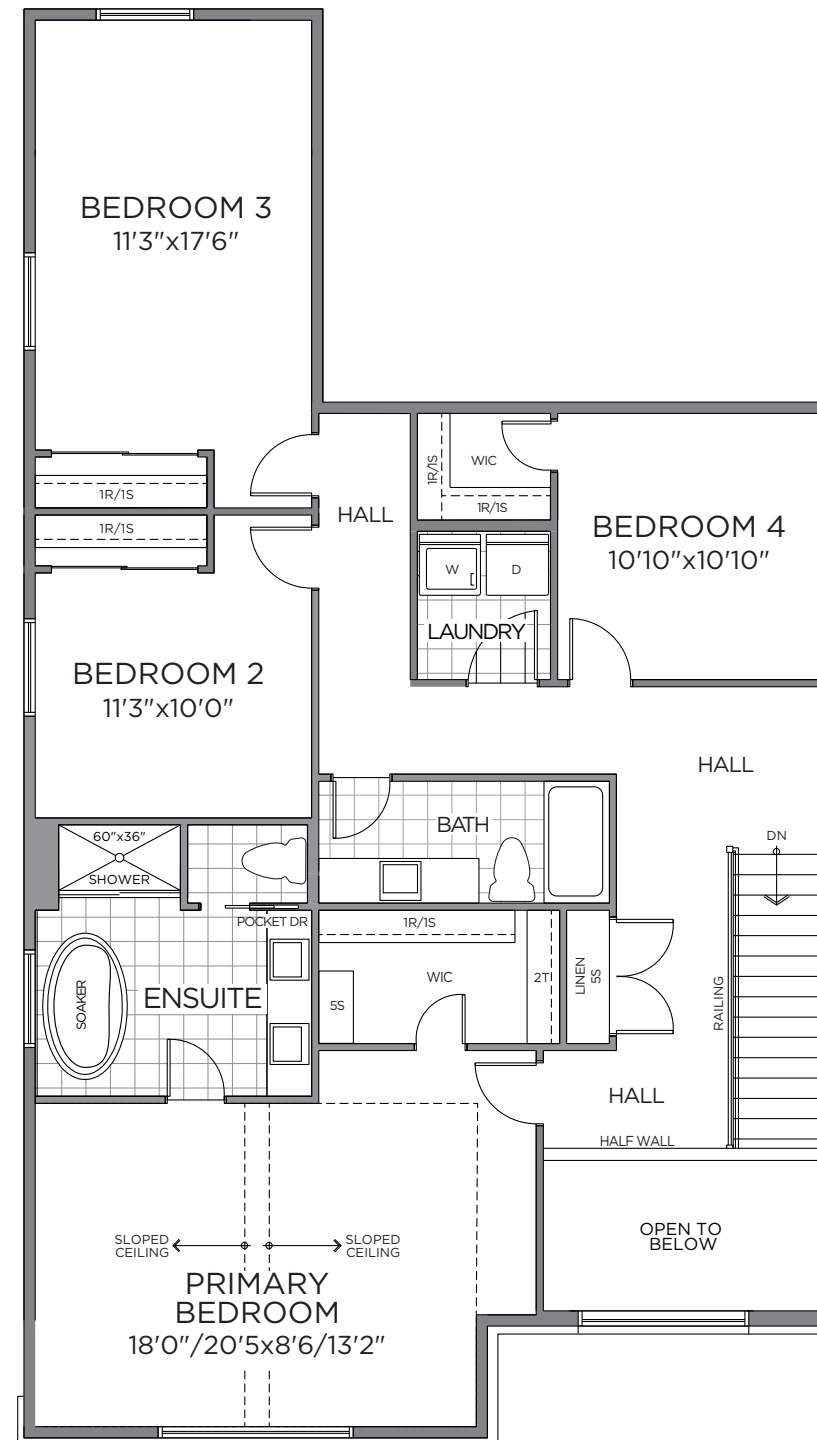
ELEVATION M



ELEVATION C



**GROUND FLOOR  
ELEV. M**

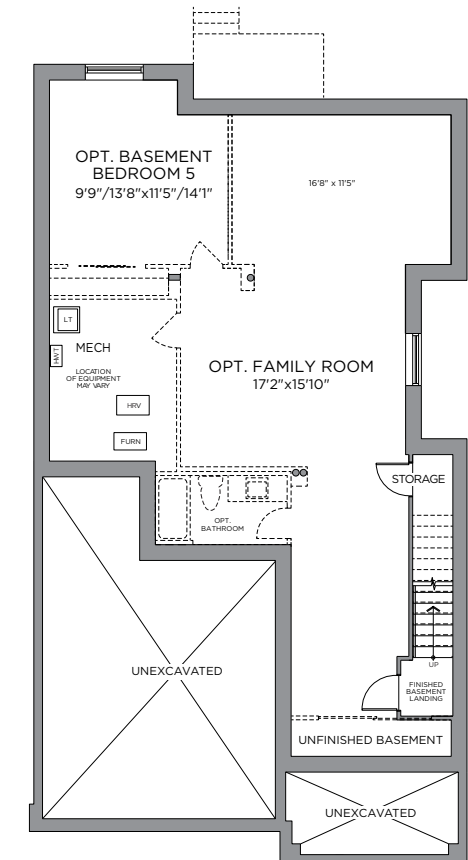


**SECOND FLOOR  
ELEV. M**

ONLY ELEVATION "M" COMES WITH A SLOPED CEILING.  
ELEVATION "C" COMES WITH A FLAT 8' CEILING



**OPT. BEDROOM 3  
& ENSUITE 2**



**STANDARD BASEMENT PLAN  
OPT. FINISHED BASEMENT  
1074 SQ. FT.  
ELEV. M**

\*Front window and porch sizing/locations vary based on elevations, see agent for detailed drawings. \*\* Number of risers to suit final grade. Prices, dimensions and specifications are subject to change without notice. All renderings are artist's concept. E. & O.E. September 2023.

