

THE BILLINGS (EC)

4 BEDROOM ~ 2,525 SQ. FT.

2-STOREY
SINGLES



THE BILLINGS (EC)

4 BEDROOM ~ 2,525 SQ. FT.

2-STOREY
SINGLES



**TWO
STOREY
SINGLES**

THE BILLINGS (EC) ~ 2,525 SQ. FT.

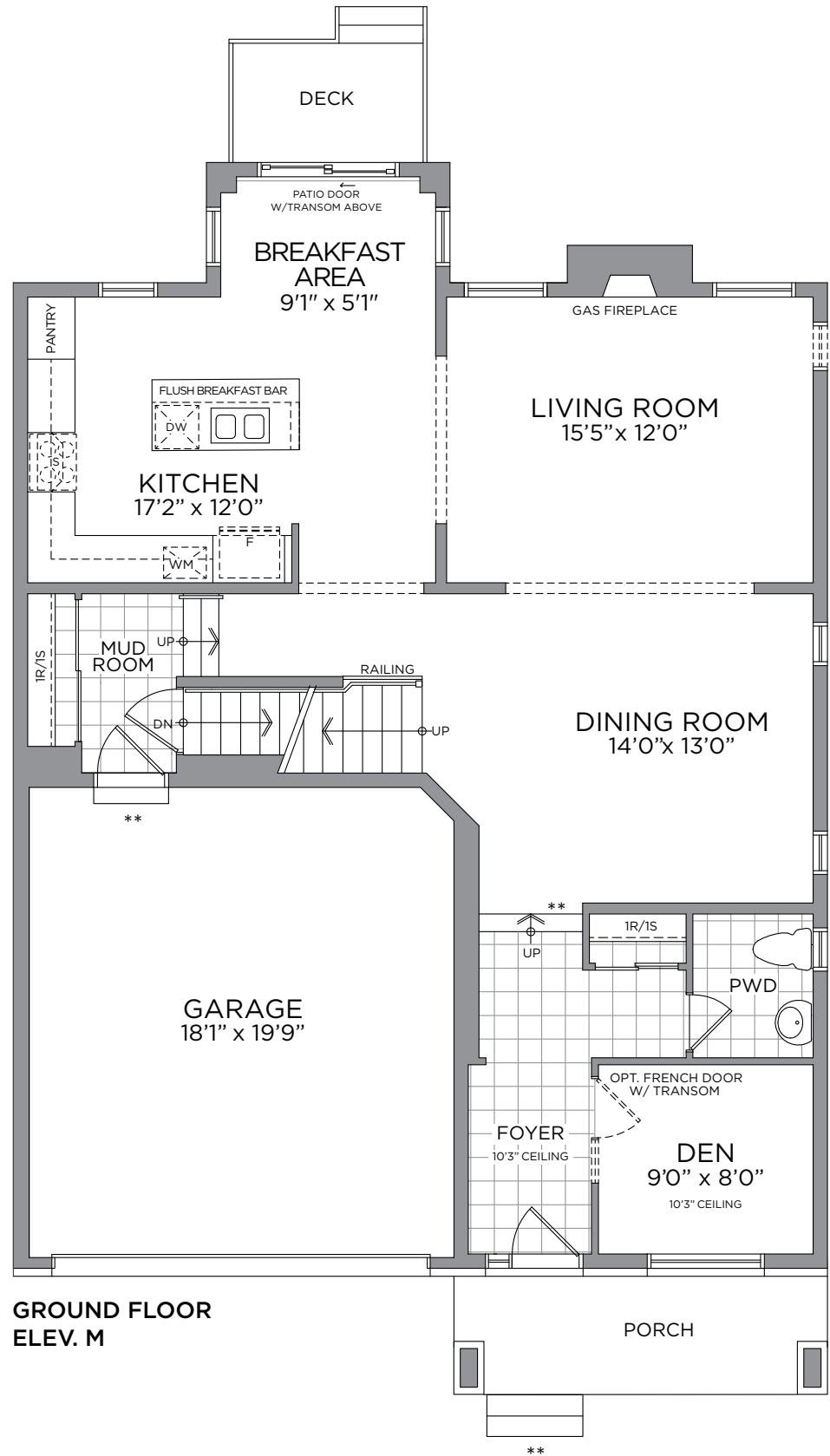
WITH OPTIONAL FINISHED BASEMENT ~ 3,028 SQ. FT.
WITH OPTIONAL FINISHED BASEMENT FAMILY ROOM ~ 2,981 SQ. FT.



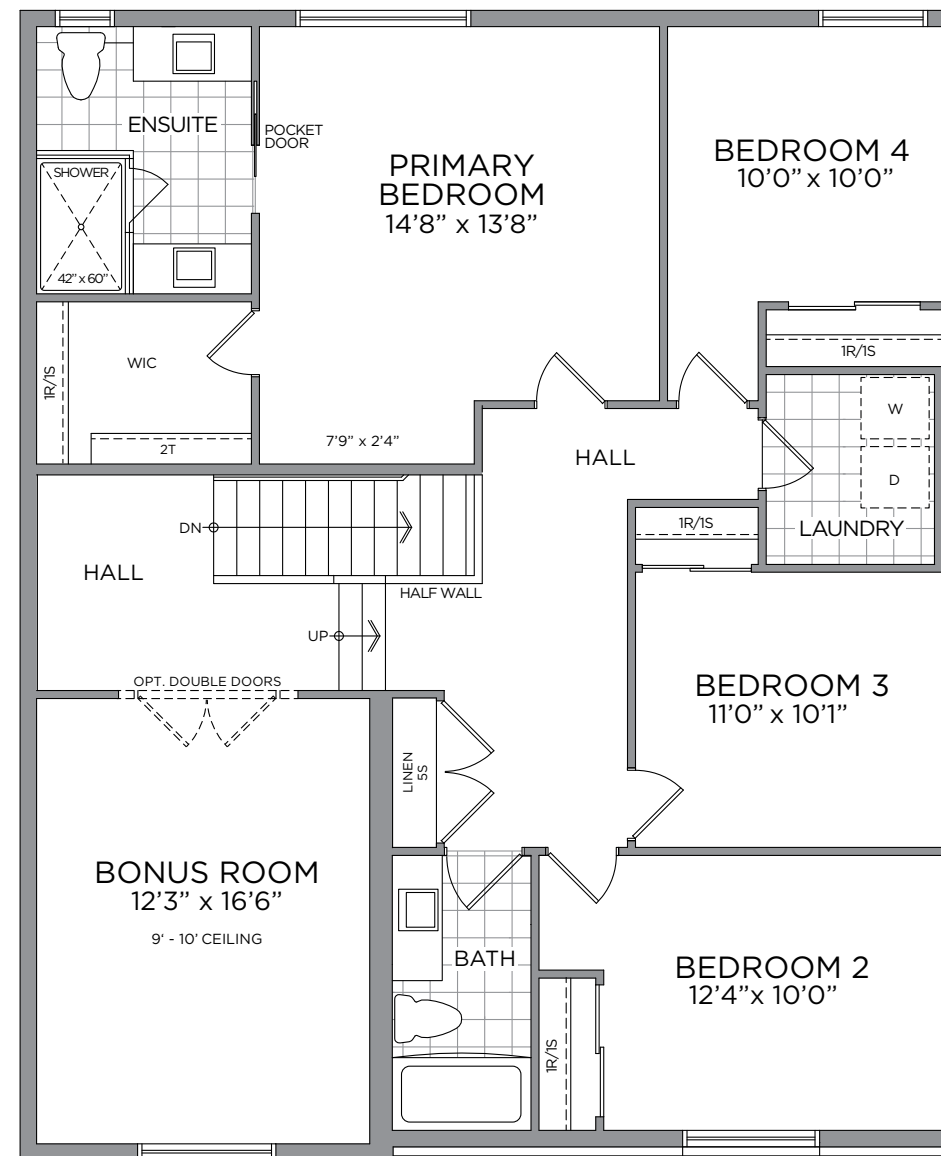
ELEVATION M



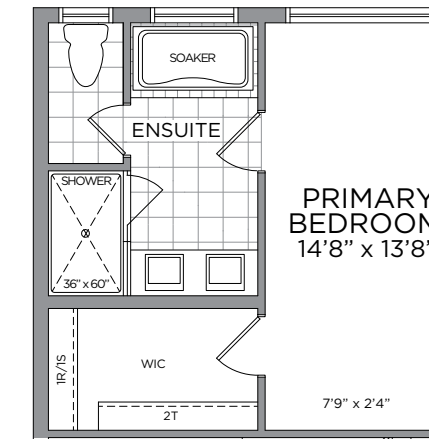
ELEVATION C



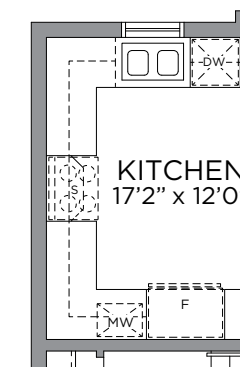
GROUND FLOOR
ELEV. M



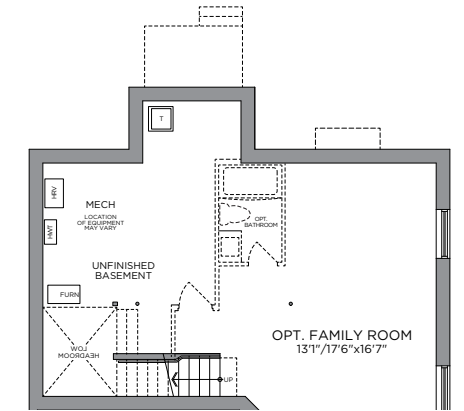
SECOND FLOOR
ELEV. M



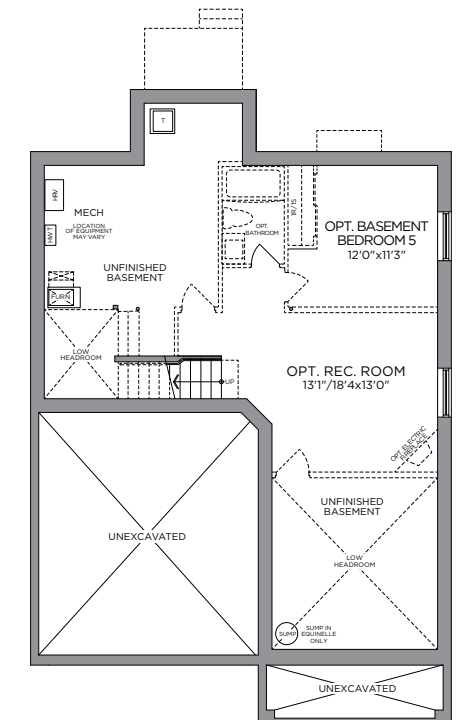
OPT. PRIMARY ENSUITE



OPT. KITCHEN LAYOUT



OPT. FINISHED BASEMENT FAMILY ROOM
FINISHED AREA 456 SQ. FT.



STANDARD BASEMENT
OPT. FINISHED BASEMENT
503 SQ. FT.

*Front window and porch sizing/locations vary based on elevations, see agent for detailed drawings. ** Number of risers to suit final grade. Prices, dimensions and specifications are subject to change without notice. All renderings are artist's concept. E. & O.E. September 2023.

