



THE ABBEY (EC)
3/4 BEDROOM ~ 1,635 SQ. FT.

**MODERN
TOWNS**



**MODERN
TOWNS**

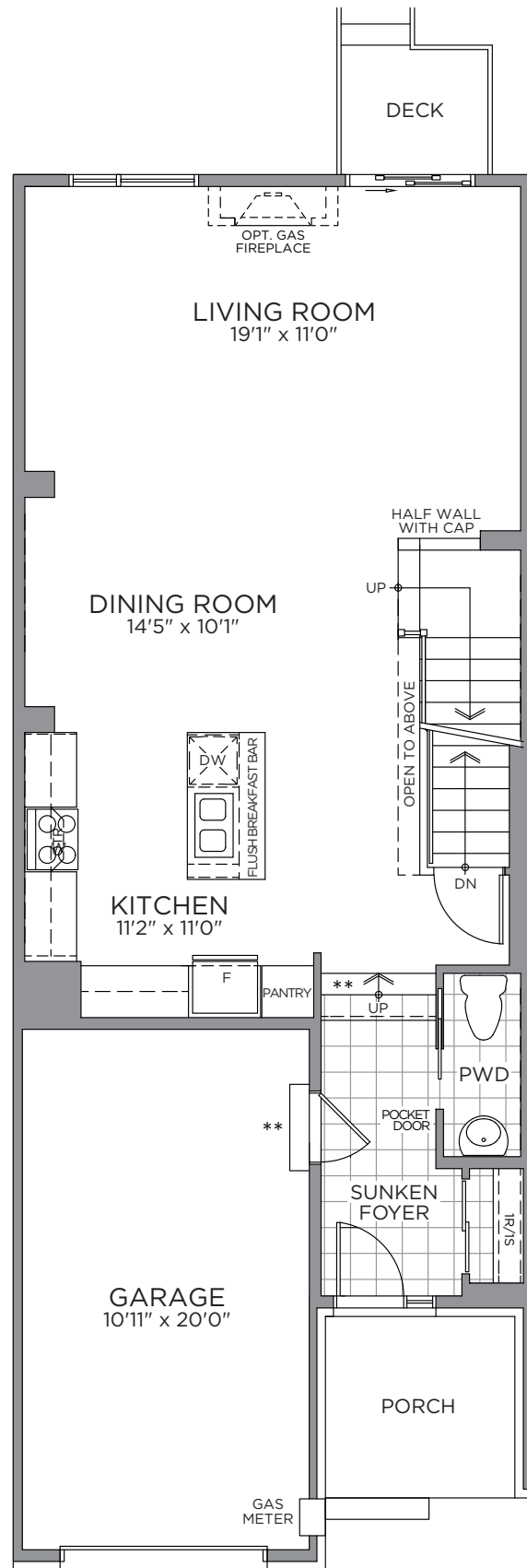
THE ABBEY (EC) ~ 1,635 SQ. FT.

1,940 SQ. FT. with Optional Finished Basement Recreation Room

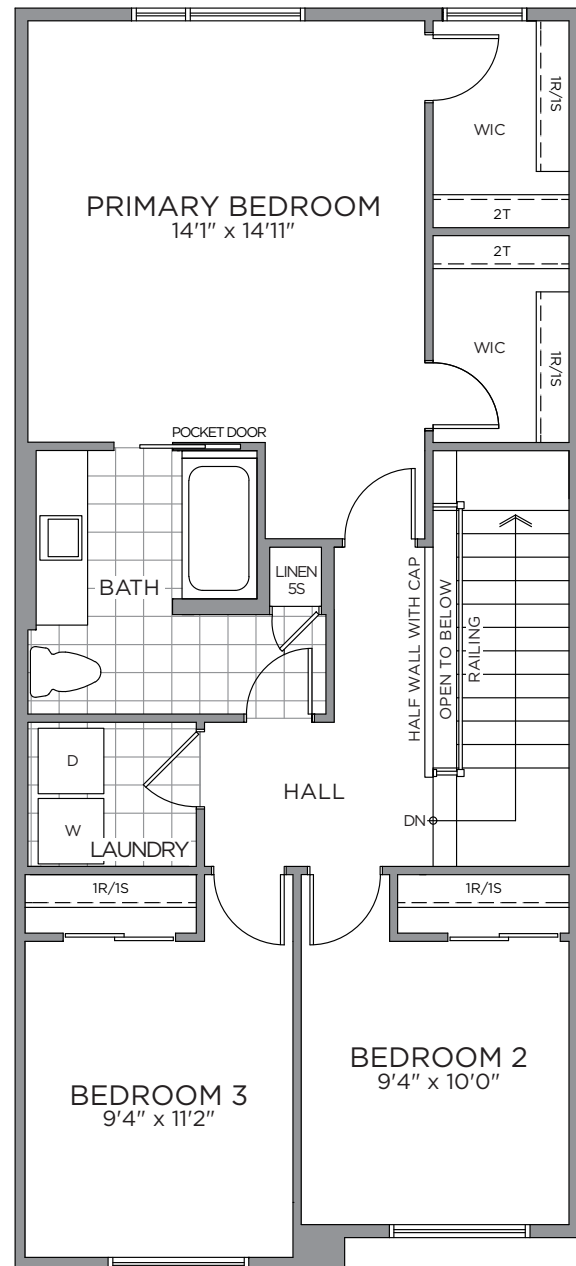
1,953 SQ. FT. with Optional Finished Basement Bedroom & Recreation Room 2



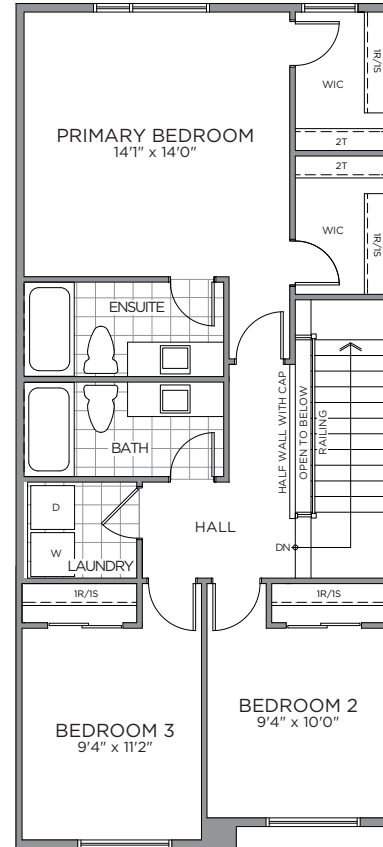
ELEVATION M



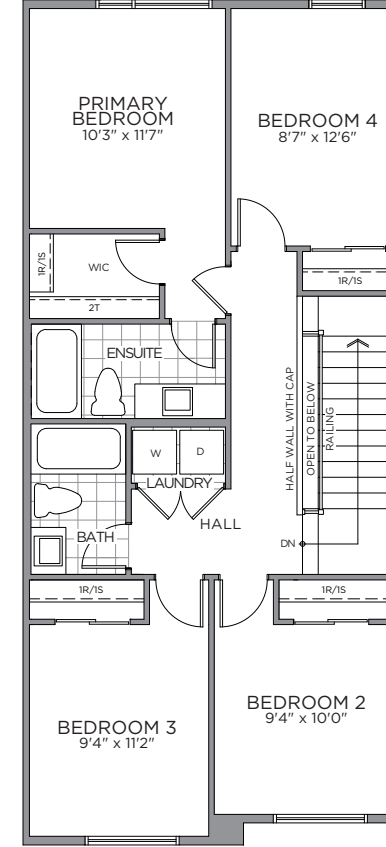
GROUND FLOOR



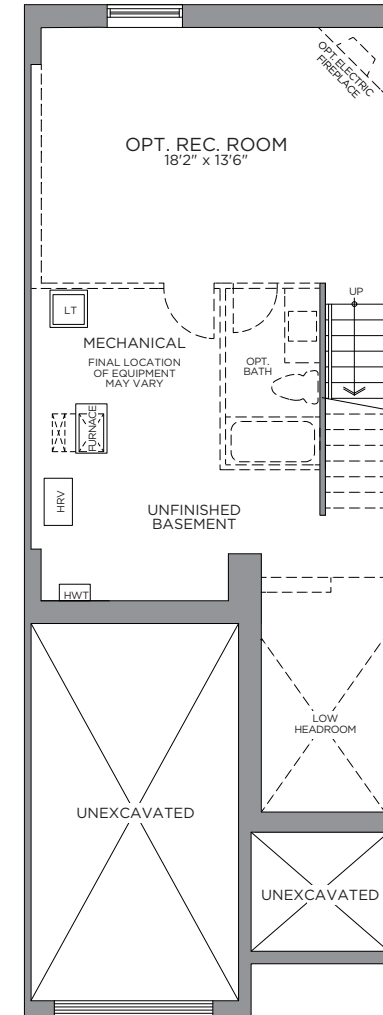
SECOND FLOOR



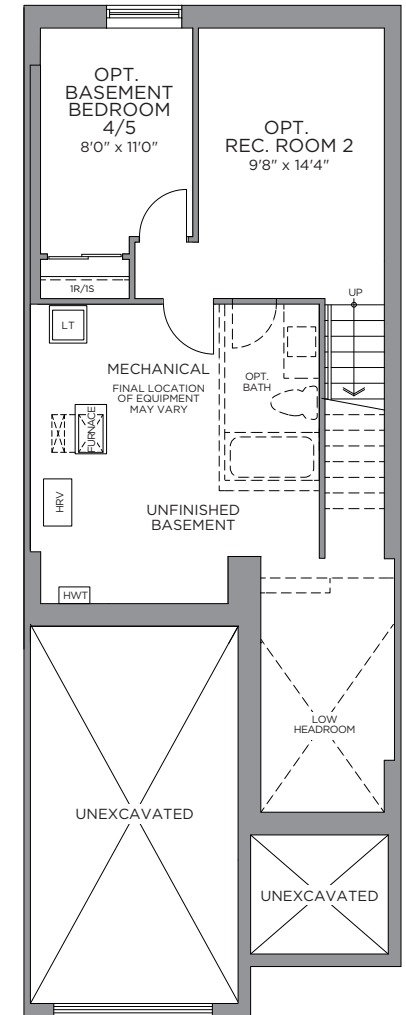
**OPT. SECOND FLOOR
PRIMARY ENSUITE**



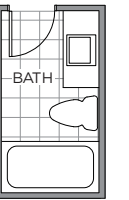
**OPT. SECOND FLOOR
4TH BEDROOM**



**STANDARD BASEMENT
OPT. FINISHED BASEMENT
REC. ROOM
305 SQ. FT.**



**OPT. FINISHED BASEMENT
REC. ROOM 2 & B-BEDROOM
318 SQ. FT.**



**OPT.
BASEMENT
BATHROOM**

*Front window and porch sizing/locations vary based on elevations, see agent for detailed drawings. ** Sump pump is for eQuinelle only. Prices, dimensions and specifications are subject to change without notice. All renderings are artist's concept. E. & O.E. March 2024.

