



## THE LEVI

3 BEDROOM ~ 1,942 SQ. FT.  
WITH 317 SQ. FT. FINISHED BASEMENT

2-STOREY  
TOWNS



ELEVATION A

ARTIST'S CONCEPT

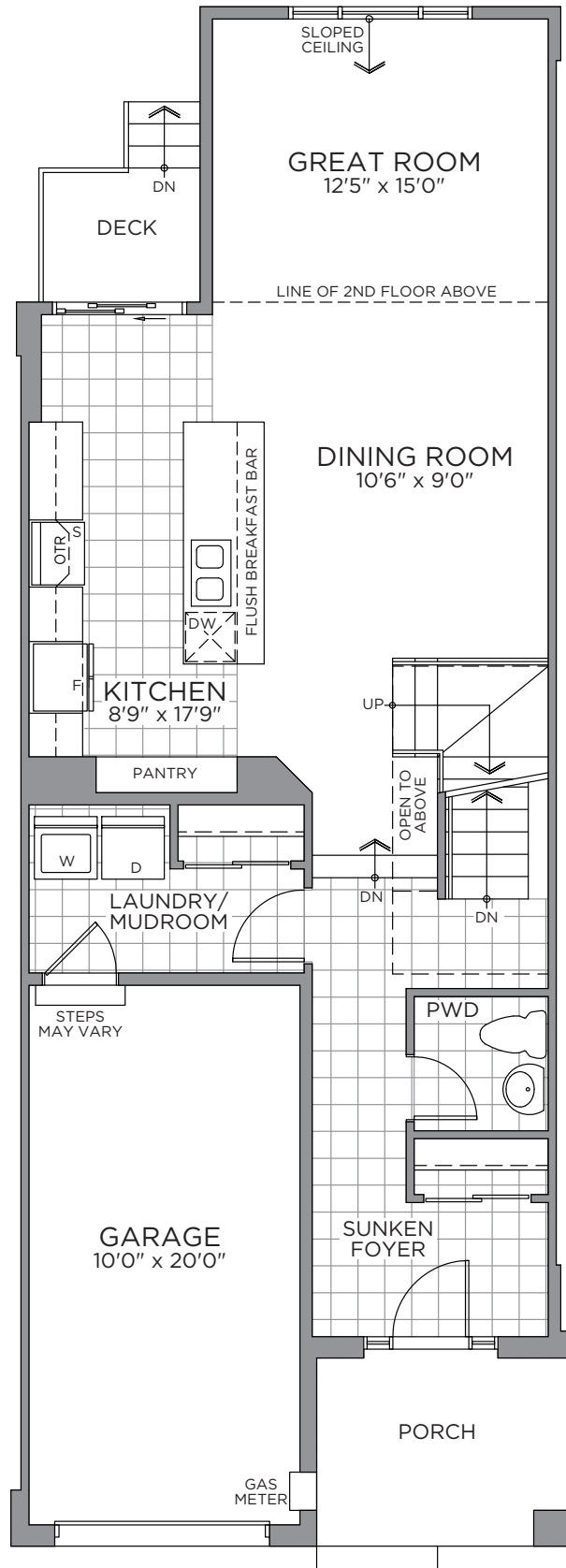
**2-STOREY  
TOWNS**

**THE LEVI ~ 1,942 SQ. FT.**

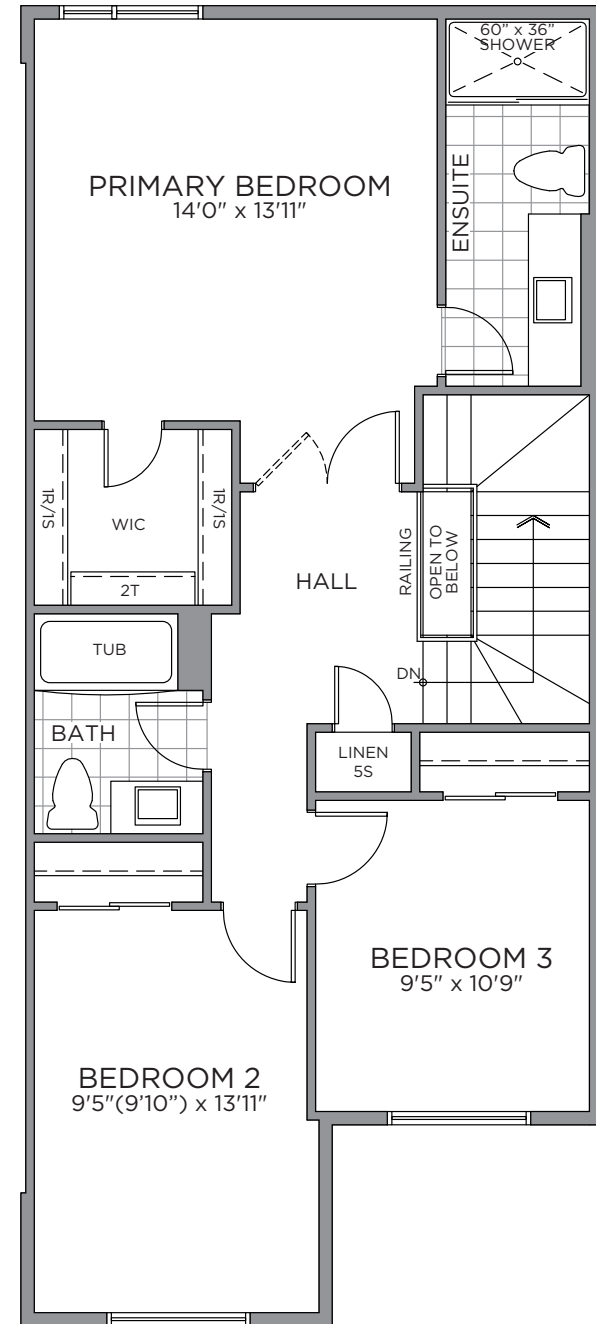
WITH 317 SQ. FT. FINISHED BASEMENT



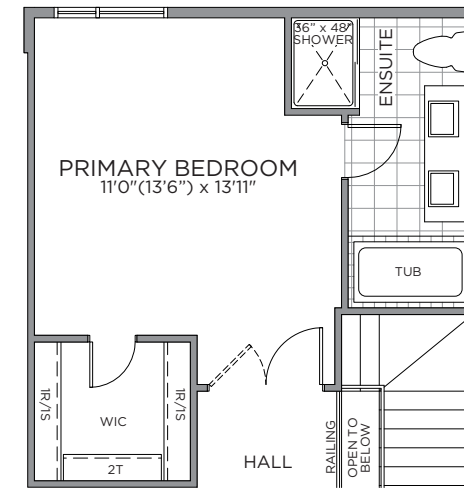
ELEVATION A



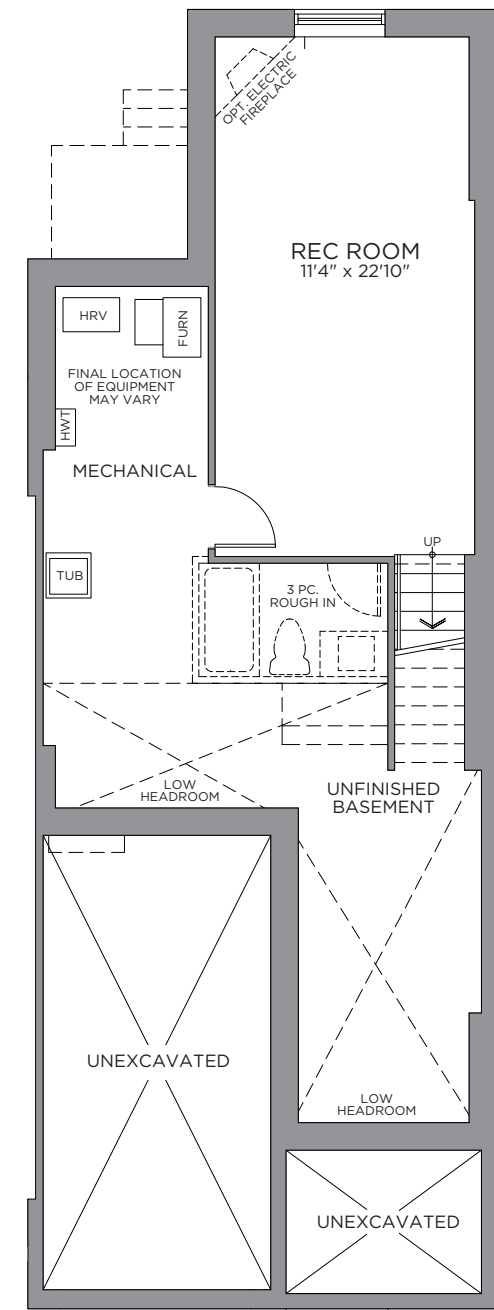
GROUND FLOOR



SECOND FLOOR



OPTIONAL SECOND FLOOR  
PRIMARY ENSUITE



FINISHED BASEMENT

\*Front window and porch sizing/locations vary based on elevations, see agent for detailed drawings. \*\* Sump pump is for eQuinelle only. Prices, dimensions and specifications are subject to change without notice. All renderings are artist's concept. E. & O.E. December 2022

