



Designer Finished Homes

THE RUBY

2,228 SQ. FT. | T33-46



CLARENCE
CROSSING

E&O
HOMES

Stunning and bright, The Ruby is a warm and welcoming end unit illuminated with natural light streaming through three walls of windows. Spanning 2,228 sq. ft. with four bedrooms, this home has a convenient second floor laundry room, a modern Kitchen with a family-sized walk-in pantry, and separated Dining and Great Rooms with a cozy gas fireplace, ideal for entertaining. Upstairs, the spacious primary retreat includes spa-inspired ensuite where you can relax and unwind.



ELEVATION A

Artist's concept. E.&O.E.

DESIGNER FINISHED HOME

A Designer Finished Home means it's a quick move-in that includes show-stopping features and finishes expertly selected for their timeless beauty. Our award-winning design team hand selected all of the features and finishes boasting a harmonious blend of the finest interior appointments.

MEET THE DESIGNER BEHIND THE HOME



SHANNON GRANGER
eQ Design Studio Manager

“The timeless compilation of light grey, white and black creates a modern, yet warm atmosphere. With shaker-style cabinetry and callacatta marble-like floors, the design exudes a contemporary feel with a traditional touch.”



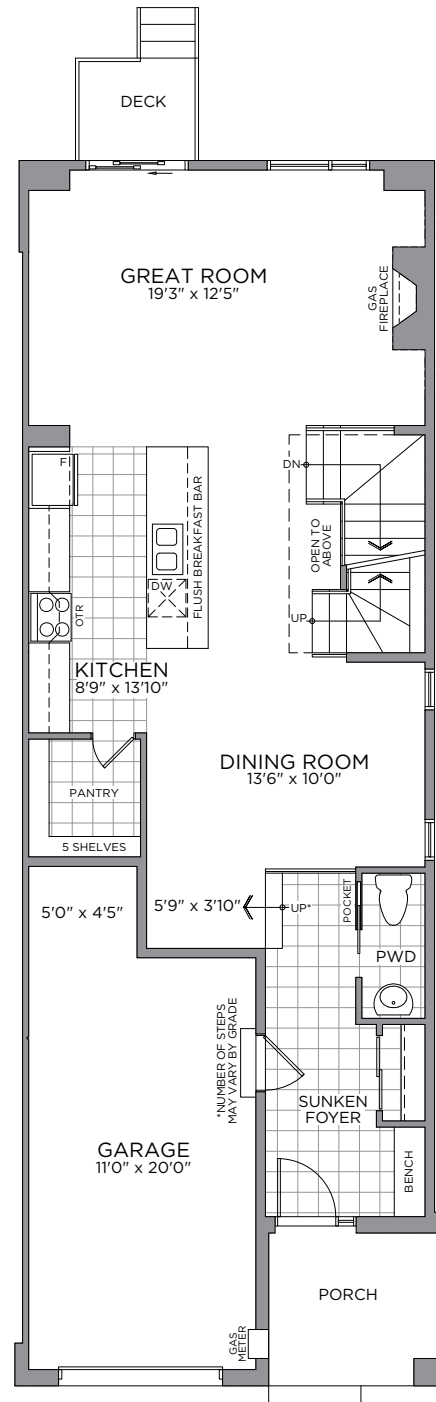
Designer Finished Homes

THE RUBY

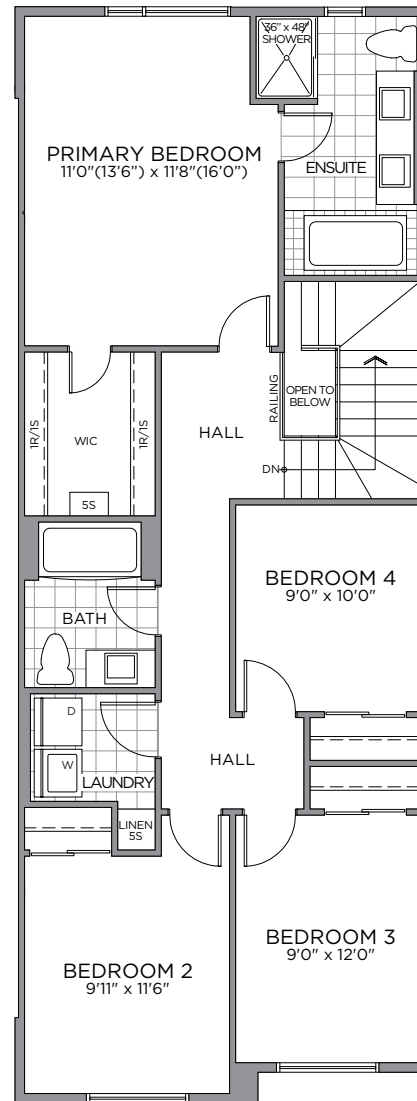
2,228 SQ. FT. | T33-46



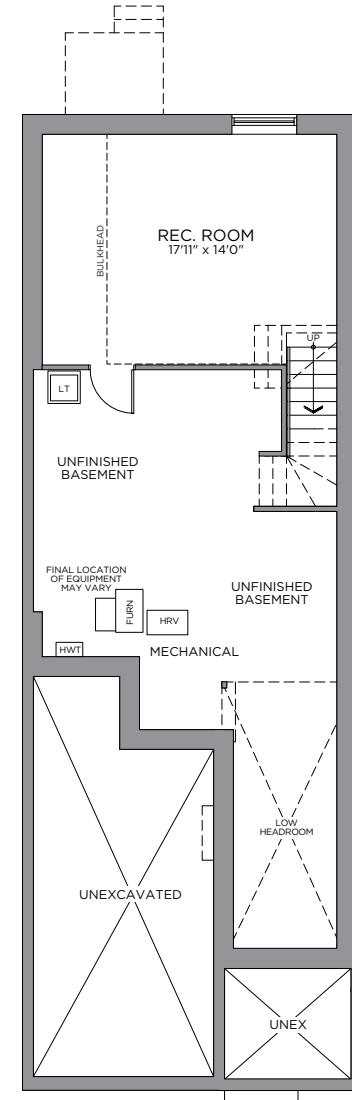
All drawings are artist's concept and may vary slightly from the final product. Actual usable floorspace may vary from stated area, and square footage has been calculated based on usable living space according to the TARIION rules and does not include garage or unfurnished basement areas. Drawings may show optional features which may not be included in the base price. Bulkheads & box outs may be required as chases for plumbing & mechanical. Garage main door location, if applicable, may vary subject to grade. Specifications subject to change without notice. Manufacturers' images are shown and may differ from the final product. E. & O.E. March 2023.



GROUND FLOOR



SECOND FLOOR



BASEMENT



OUR COMMUNITY



THE MASTERPLAN

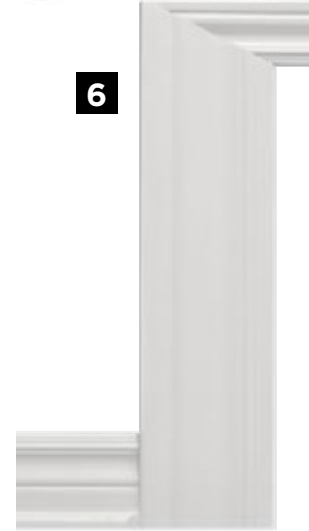


Artist's concept. Map is not drawn to scale E.&O.E.

- * Brick/stone skirt at side elevation
- ◆ Look-out
- ⊕ Walk-out

MAKE A GRAND ENTRANCE WITH AN
EXQUISITE DOOR HARDWARE,
FLOOR & TRIM PACKAGE

INTERIOR DETAILS



E.&O.E.

1
**MAIN ENTRY
TILE**
13x13
Centura
Linen - Grey

2
**THROUGHOUT HOME /
HARDWOOD FLOORING**
Upg. Lauzon Essential
Expert Collection Red Oak
3-1/8" x 3/4" - Smokey Grey

3
CARPET
Beaulieu
A6761 Sultana
II Carpet -
Democracy

4
**INTERIOR
PAINT**
Benjamin
Moore OC-
22 - Calm

5
**INTERIOR DOOR
HARDWARE**
Weiser Westley
Satin Chrome Levers
- Satin Chrome

6
TRIM PACKAGE
Trim Package #1
Baseboard 5706A,
Casing 7705, Shoe
Mould 101

7
**INTERIOR
DOORS**
Cambridge
2 Panel
Smooth

YOUR GUESTS WILL FIND YOUR
POWDER ROOM MOST WELCOMING

POWDER ROOM



1

FLOORING
13x13 Centura
Linen - Grey

2

VANITY FAUCET
Vichy Chrome
1-Handle Bath
Faucet - Chrome

3

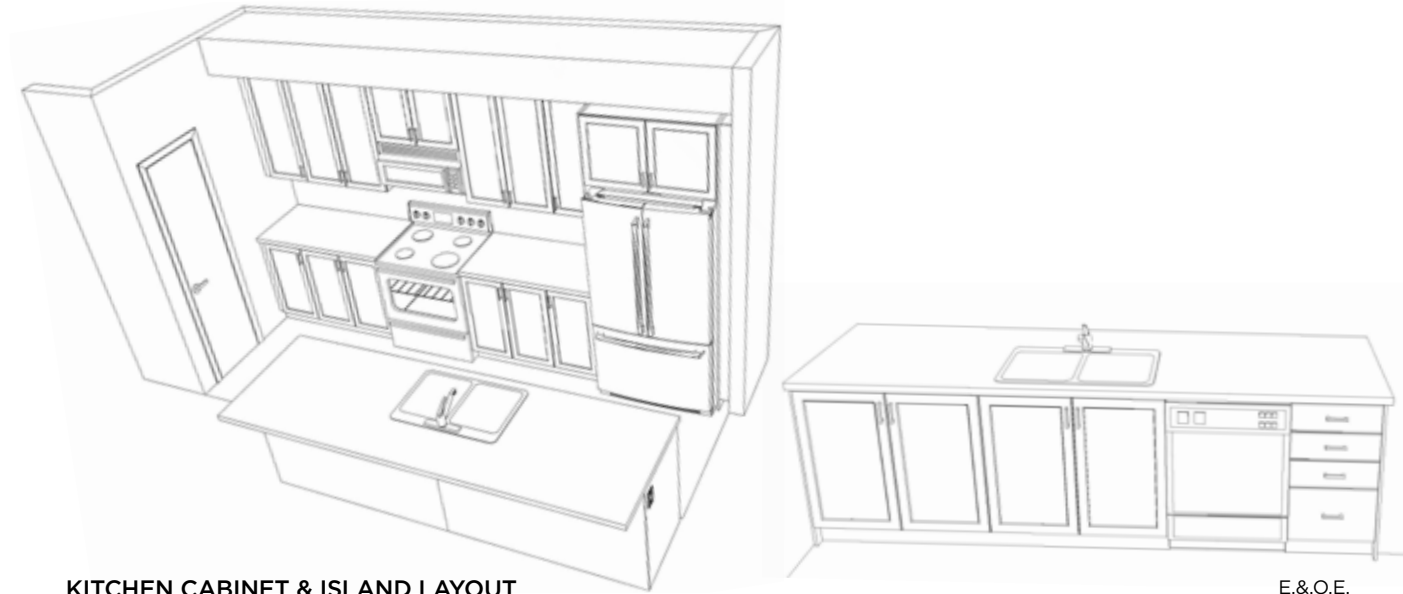
VANITY SINK
Boulevard
Pedestal Single
Hole - White

4

TOILET
Upg. ProFlo
- Jerritt 2pc
HE- White

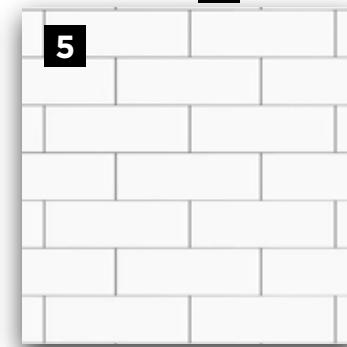
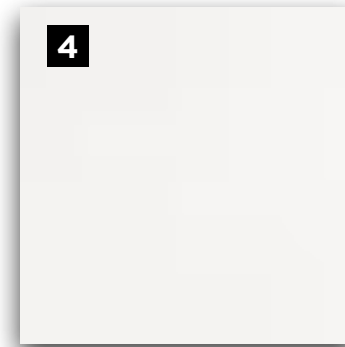
A GREAT RECIPE STARTS WITH A
GOURMET CHEF KITCHEN

KITCHEN



KITCHEN CABINET & ISLAND LAYOUT

E.&O.E.



E.&O.E.

1

CABINERY
Level 2 -
Thermofoil
Preston -
Satin Cosmo

2

**KITCHEN
SINK**
Double Bowl
Nautika Under
Mount Sink

3

DOOR PULL
Std Hardware
4113-1BPN-P
- Brushed
Nickel

4

COUNTERTOP
Silestone
Group 1 - CTK
- SG1 - Miami
Vena

5

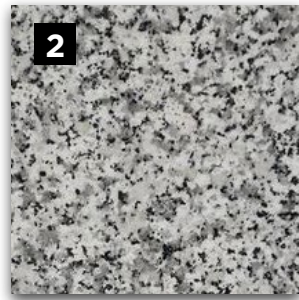
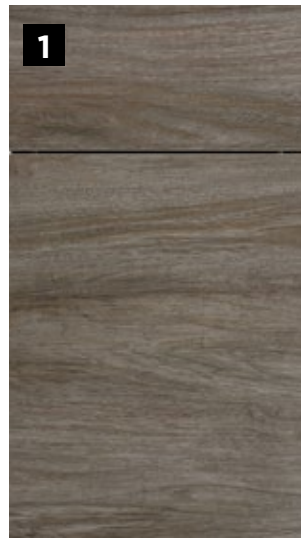
BACKSPLASH
3x6 Olympia
Essential
50/50 Offset
- Arctic White

6

KITCHEN FAUCET
Sleek Spot Resist
Stainless Steel
Single Hole
1-Handle

**A SUMPTUOUS PRIMARY ENSUITE
YOUR COZY PRIVATE RETREAT**

PRIMARY ENSUITE



ENSUITE LAYOUT

E.&O.E.



1
CABINERY
Level 1 - Melamine
Contempra - Catamaran

2
COUNTERTOP
Granite - CTB-GSSTD
- Luna Pearl

3
FLOORING
13x13 Jefferson
Matte - Beige

4
SHOWER/TUB WALL TILE
Ceratec 4x16 Essential Subway Tile
- Vertically Stacked - Bianco

5
DOOR PULL
Std Hardware 4113-1BPN-P
- Brush Nickel

6
VANITY FAUCET
Vichy Chrome 1-Handle
- 6710 - Chrome

7
TUB FAUCET
Vichy Chrome 1-Handle Low Arc
w/ Handshower T967 - Chrome

8
SHOWER FIXTURE
Vichy Chrome Posi-Temp
Shower - T2662EP

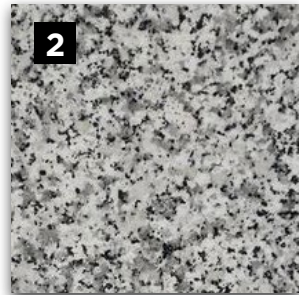
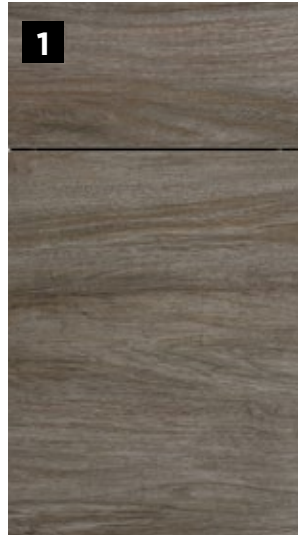
9
VANITY SINK
ProFlo
Undermount Sink

10
TOILET
ProFlo - Jerritt
2-pc. HE - White

11
SHOWER DOOR
Maax Halo Sliding
Door - Chrome

FULL BATHROOMS
A BLEND OF LUXURY & MODERNITY

MAIN BATH



MAIN BATH LAYOUT

E.&O.E.



1
CABINETY
Melamine
Contempra -
Catamaran

2
COUNTERTOP
Granite - CTB
-GSSTD - Luna
Pearl

3
FLOORING
13 x 13
Jefferson
Matte - Beige

4
SHOWER/TUB WALL TILE
Ceratec 4x16 Essential
Subway Tile - Horizontally
Stacked - Bianco

5
DOOR PULL
Std Hardware
4113-1BPN-P -
Black Matte

6
TUB/SHOWER FIXTURE
Genta 6702BL 1-Handle
Bath Faucet - Black
Matte

7
VANITY FAUCET
Vichy Chrome
1-Handle - 6710 -
Chrome

8
VANITY SINK
ProFlo
Undermount
Sink

9
TOILET
ProFlo -
Jerritt 2-pc.
HE - White

ENJOY THE EASE AND LUXURY OF LIFE
WITH THE HELP OF **MODERN APPLIANCES**

APPLIANCES



1

WASHER

Whirlpool -
5.4 cu. ft. Top
Load Washer

2

DRYER

Whirlpool - 7.4
cu. ft. Top Load
Electric Dryer

3

HOODFAN

Base Package GE
Over-the-Range
Microwave

4

RANGE

LG - 30"
Electric Smooth
Top Range

5

DISHWASHER

LG - 24"
Built-In Front
Control

6

FRIDGE

LG - 36" Counter
Depth French
Door Fridge



Congratulations On Selecting Your New eQ Home!



Melissa Gauthier,
Director, Sales & Design

1

Sign Agreement of Purchase & Sale with your eQ Sales Representative.

Provide deposit cheques or complete EFT form *(if applicable)*

2

10-day rescission period starts. Review Agreement of Purchase & Sale with your Solicitor.

3

Provide Mortgage Pre-Approval from your lender.

4

Congratulations! Your new home purchase is now official and 10-day rescission period ends.

5

Receive access to your homeowner portal.

Your New Home Construction Starts



Peter Jury,
VP of Construction

1

Lot Walk. Meet the builder.**

2

Receive a progress photo from Customer Care.

3

Roof is on and shingled. Customer Care to send progress photo.

4

Frame Walk with Customer Care and Construction Representative.**

5

Walk-through for blinds and window coverings measurements.**

6

Homeowner Orientation (PDI).** Customer Care will walk you through your new home.

7

Register online for MyHome at Tarion.com.

8

Submit AVID Construction Survey.

Welcome Home!



Francesca Jacobs,
Customer Care Manager

1

Occupancy starts.

2

Submit 30-day Tarion Warranty if necessary.***

3

Submit AVID Customer Satisfaction Survey (30 days after taking occupancy).

4

Closing day.

5

Election day turnover process begins.

6

Complete common elements performance audit survey.

7

Submit 1-year Tarion Warranty starts if necessary.***

8

Submit 2-year Tarion Warranty starts if necessary.***

9

3 to 7-year Tarion Warranty starts.***

Here's How We Bring You Home

This event may be in-person or virtual. If you have opted in to attend this appointment, an eQ Homes representative will contact you to confirm the details. *See your Tarion Warranty for details.



ALAIN LEGAULT
New Home Sales Consultant

235 L'etang Street,
Clarence-Rockland, ON K4K 0K1
TEL: 613-682-0167
EMAIL: alegault@eqhomes.ca



All drawings are artist's concept and may vary slightly from the final product. Actual usable floorspace may vary from stated area, and square footage has been calculated based on usable living space according to the TARION rules and does not include garage or unfurnished basement areas. Drawings may show optional features which may not be included in the base price. Bulkheads & box outs may be required as chases for plumbing & mechanical. Garage main door location, if applicable, may vary subject to grade. In an ongoing review of homeowner's needs, changes may have been incorporated into our "New Home Features" and construction techniques. Specifications subject to change without notice. Manufacturers' images are shown and may differ from the final product. E. & O.E. March 2023.