



Designer Finished Homes

THE JUNIPER

1,583 SQ. FT. | T24-04

WALK-OUT LOT



CLARENCE
CROSSING

E&O
HOMES

Thoughtfully-designed, The Juniper is a 2-storey townhome spanning 1,583 sq. ft. with three large bedrooms and a convenient laundry room on the second floor with them. Anchored by a centre island with flush breakfast bar, the modern Kitchen, Dining and Living Rooms and illuminated by natural light and feature a walk out through patio doors to a lush backyard.



ELEVATION A

Artist's concept. E.&O.E.

DESIGNER FINISHED HOME

A Designer Finished Home means it's a quick move-in that includes show-stopping features and finishes expertly selected for their timeless beauty. Our award-winning design team hand selected all of the features and finishes boasting a harmonious blend of the finest interior appointments.

MEET THE DESIGNER

BEHIND THE HOME



SHANNON GRANGER
eQ Design Studio
Manager

“Cozy and classic, this home features warm, rich dark hardwood flooring and taupe-stained cabinetry accentuated by the white Quartz countertops and caramel veining. It's the perfect backdrop for family gatherings, celebrating special occasions and making memories.”





Designer Finished Homes

THE JUNIPER

1,583 SQ. FT. | T24-04

WALK-OUT LOT



BACK ELEVATION

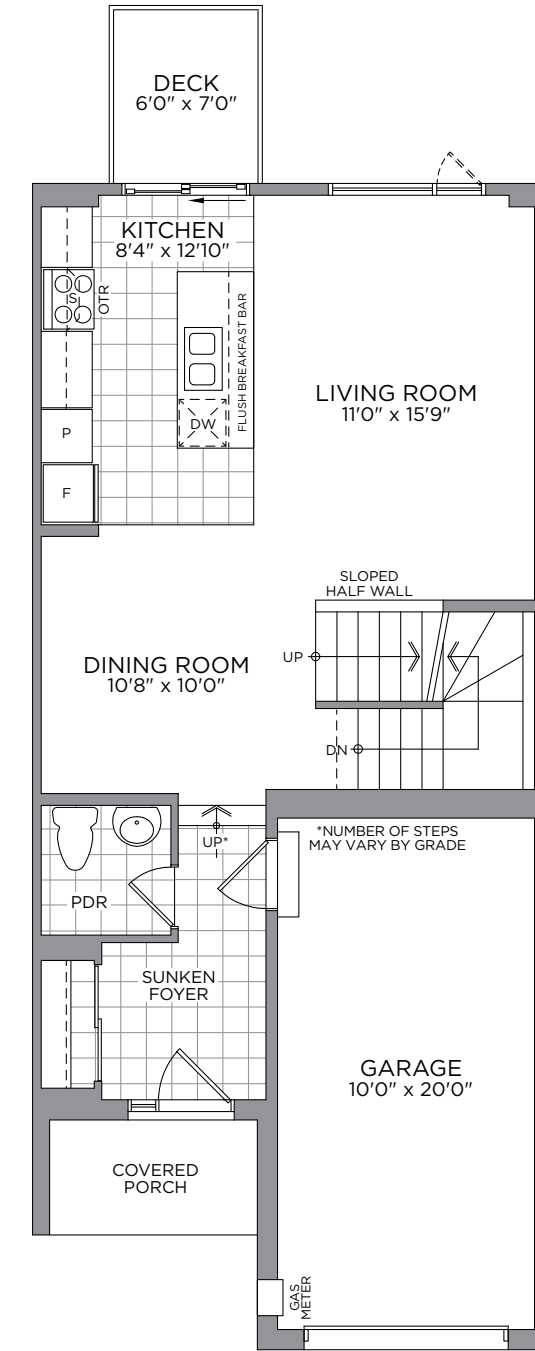
Artist's concept. E.&O.E.



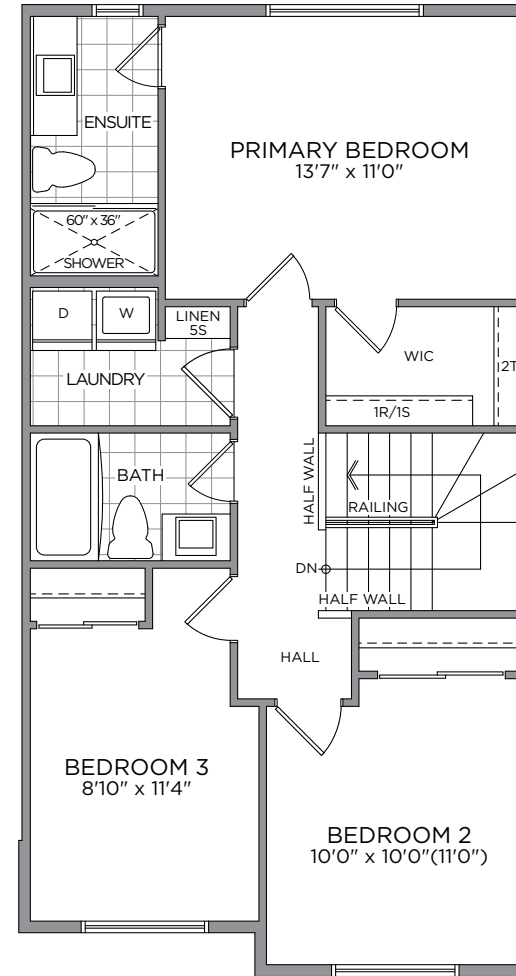
ELEVATION A

Artist's concept. E.&O.E.

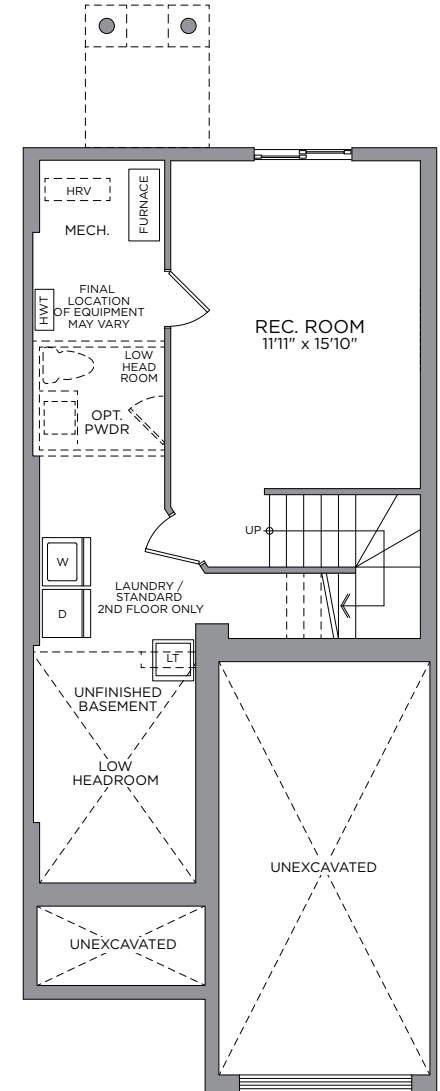
All drawings are artist's concept and may vary slightly from the final product. Actual usable floorspace may vary from stated area, and square footage has been calculated based on usable living space according to the TARION rules and does not include garage or unfurnished basement areas. Drawings may show optional features which may not be included in the base price. Bulkheads & box outs may be required as chases for plumbing & mechanical. Garage main door location, if applicable, may vary subject to grade. Specifications subject to change without notice. Manufacturers' images are shown and may differ from the final product. E. & O.E. March 2023.



GROUND FLOOR



SECOND FLOOR



BASEMENT



OUR COMMUNITY



THE MASTERPLAN



- * Brick/stone skirt at side elevation
- ◆ Look-out
- + Walk-out

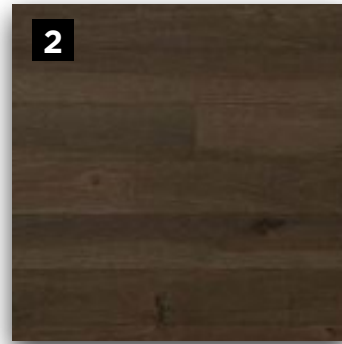
Artist's concept. Map is not drawn to scale. E.&O.E.

MAKE A GRAND ENTRANCE WITH AN
EXQUISITE DOOR HARDWARE,
FLOOR & TRIM PACKAGE

INTERIOR DETAILS



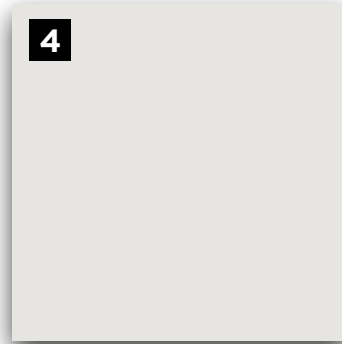
1



2



3



4



5

6



7

E.&O.E.

1

**MAIN ENTRY
TITLE**
13x13 Centura
Calacatta Matte
- Calacatta

2

**THROUGHOUT HOME /
HARDWOOD FLOORING**
Lauzon Essential Expert
Collection Red Oak 3-1/8"
x 3/4" - Castano

3

CARPET
STD Beaulieu
Coronet A4525
Minotaur Carpet -
Mystic Beige

4

**INTERIOR
PAINT**
Benjamin
Moore OC-
22 - Calm

5

**INTERIOR DOOR
HARDWARE**
Weiser Westley
Satin Chrome Levers
- Satin Chrome

6

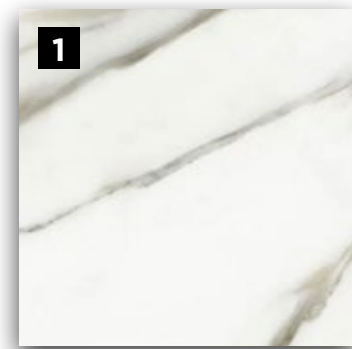
TRIM PACKAGE
Trim Package #1
Baseboard 5706A,
Casing 7705, Shoe
Mould 101

7

**INTERIOR
DOORS**
Cambridge
2 Panel
Smooth

YOUR GUESTS WILL FIND YOUR
POWDER ROOM MOST WELCOMING

POWDER ROOM



2



3



4



E.&O.E.

1

FLOORING
13x13 Centura
Calacatta Matte
- Calacatta

2

**VANITY
FAUCET**
Genta 6702
- Chrome

3

VANITY SINK
Boulevard
Pedestal Single
Hole - White

4

TOILET
ProFlo
Jerrit -
White

A GREAT RECIPE STARTS WITH A
GOURMET CHEF KITCHEN

KITCHEN



1



KITCHEN CABINET & ISLAND LAYOUT

E.&O.E.



2



3



4



5



6

E.&O.E.

1

CABINETRY
 Level 3
 - Salem
 Maple -
 Winter

2

KITCHEN SINK
 Bristol B1807
 Double Bowl
 Undermount
 Stainless Steel Sink

3

DOOR PULL
 Std Hardware
 4113-1BPN-P -
 Brush Nickel

4

COUNTERTOP
 Silestone
 Group 1 - CTK-
 SG1 - Halcyon

5

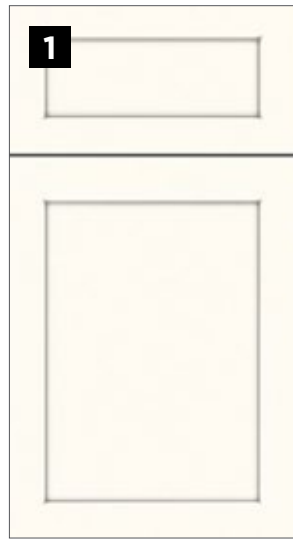
BACKSPLASH
 Level 2 -
 Piccadilly
 - 1/3 Offset -
 Avorio

6

KITCHEN FAUCET
 Arbor Chrome
 1-Handle High
 Arc Pulldown -
 Chrome

**A SUMPTUOUS PRIMARY ENSUITE
YOUR COZY PRIVATE RETREAT**

PRIMARY ENSUITE



ENSUITE LAYOUT

E.&O.E.

1
CABINERY
Level 1 -
Thermofoil
Preston -
Textured White

2
COUNTERTOP
Silestone Group
1 - CTB-SG1 -
Halcyon

3
FLOORING
13x13 Linen
Matte -
Beige

4
**SHOWER/TUB
WALL TILE**
8x8 Linen Matte
- Horizontally
Stacked - Beige

5
DOOR PULL
Std
Hardware
4114-1026-P
- Chrome

6
VANITY FAUCET
Genta 6702
Chrome 1-Handle
Bath Faucet -
Chrome

7
SHOWER FIXTURE
Genta Tub Shower
Fixture CHROME
T2473EP+2520 -
Chrome

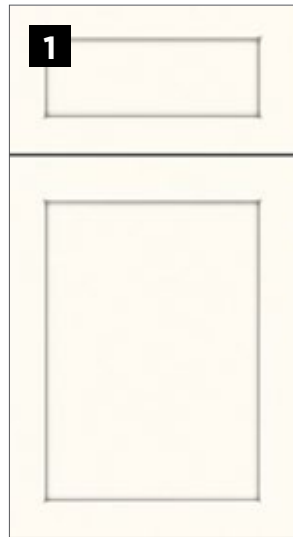
8
VANITY SINK
ProFlo
Undermount
Sink

9
TOILET
ProFlo -
Jerritt 2pc
HE - White

10
**SHOWER
DOOR**
Maax Halo
Sliding Door
- Chrome

FULL BATHROOMS
A BLEND OF LUXURY & MODERNITY

MAIN BATH



MAIN BATH LAYOUT

E.&O.E.



E.&O.E.

1

CABINERY

Level 1 -
Thermofoil
Preston -
Textured White

2

COUNTERTOP

Silestone
Group 1 - CTB-
SG1 - Lena

3

FLOORING

13x13 Linen
Matte -
Beige

4

**SHOWER/TUB WALL
TILE**

Ceratec 4x16 Essential
Subway Tile - Horizontally
Stacked - Greige

5

DOOR PULL

Std
Hardware
4114-1026-P
- Chrome

6

VANITY FAUCET

Genta 6702
Chrome 1-Handle
Bath Faucet -
Chrome

7

SHOWER FIXTURE

Genta Tub Shower
Fixture CHROME
T2473EP+2520 -
Chrome

8

VANITY SINK

ProFlo
Undermount
Sink

9

TOILET

ProFlo
- Jerritt
2pc HE
- White

ENJOY THE EASE AND LUXURY OF LIFE
WITH THE HELP OF **MODERN APPLIANCES**

APPLIANCES



1

WASHER

Whirlpool -
5.0 cu. ft. Front
Load Washer

2

DRYER

Whirlpool - 7.4
cu. ft. Front Load
Electric Dryer

3

HOOD FAN

Base Package GE
Over-the-Range
Microwave

4

RANGE

LG - 30"
Electric Smooth
Top Range

5

DISHWASHER

LG - 24"
Built-In Front
Control

6

FRIDGE

LG - 36" Counter
Depth French
Door Fridge



Congratulations On Selecting Your New eQ Home!



Melissa Gauthier,
Director, Sales & Design

1

Sign Agreement of Purchase & Sale with your eQ Sales Representative.

Provide deposit cheques or complete EFT form *(if applicable)*

2

10-day rescission period starts. Review Agreement of Purchase & Sale with your Solicitor.

3

Provide Mortgage Pre-Approval from your lender.

4

Congratulations! Your new home purchase is now official and 10-day rescission period ends.

5

Receive access to your homeowner portal.

Your New Home Construction Starts



Peter Jury,
VP of Construction

1

Lot Walk. Meet the builder.**

2

Receive a progress photo from Customer Care.

3

Roof is on and shingled. Customer Care to send progress photo.

4

Frame Walk with Customer Care and Construction Representative.**

5

Walk-through for blinds and window coverings measurements.**

6

Homeowner Orientation (PDI).** Customer Care will walk you through your new home.

7

Register online for MyHome at Tarion.com.

8

Submit AVID Construction Survey.

Welcome Home!



Francesca Jacobs,
Customer Care Manager

1

Occupancy starts.

2

Submit 30-day Tarion Warranty if necessary.***

3

Submit AVID Customer Satisfaction Survey (30 days after taking occupancy).

4

Closing day.

5

Election day turnover process begins.

6

Complete common elements performance audit survey.

7

Submit 1-year Tarion Warranty starts if necessary.***

8

Submit 2-year Tarion Warranty starts if necessary.***

9

3 to 7-year Tarion Warranty starts.***

Here's How We Bring You Home

This event may be in-person or virtual. If you have opted in to attend this appointment, an eQ Homes representative will contact you to confirm the details. *See your Tarion Warranty for details.



ALAIN LEGAULT
New Home Sales Consultant

235 L'etang Street,
Clarence-Rockland, ON K4K 0K1
TEL: 613-682-0167
EMAIL: alegault@eqhomes.ca



All drawings are artist's concept and may vary slightly from the final product. Actual usable floorspace may vary from stated area, and square footage has been calculated based on usable living space according to the TARION rules and does not include garage or unfurnished basement areas. Drawings may show optional features which may not be included in the base price. Bulkheads & box outs may be required as chases for plumbing & mechanical. Garage main door location, if applicable, may vary subject to grade. In an ongoing review of homeowner's needs, changes may have been incorporated into our "New Home Features" and construction techniques. Specifications subject to change without notice. Manufacturers' images are shown and may differ from the final product. E. & O.E. March 2023.