

Designer Finished Homes

# SUITE 401

MODEL 14 | 1,093 SQ. FT. | 2 BEDS + DEN | 2 BATHS

THE  
**SPENCER**  
AT GREYSTONE



Artist's concept. E.&O.E.







THE  
**SPENCER**  
 AT GREYSTONE

WELCOME TO THE SPENCER AT  
**GREYSTONE VILLAGE**

MODERN,  
 ICONIC,  
**THE SPENCER**

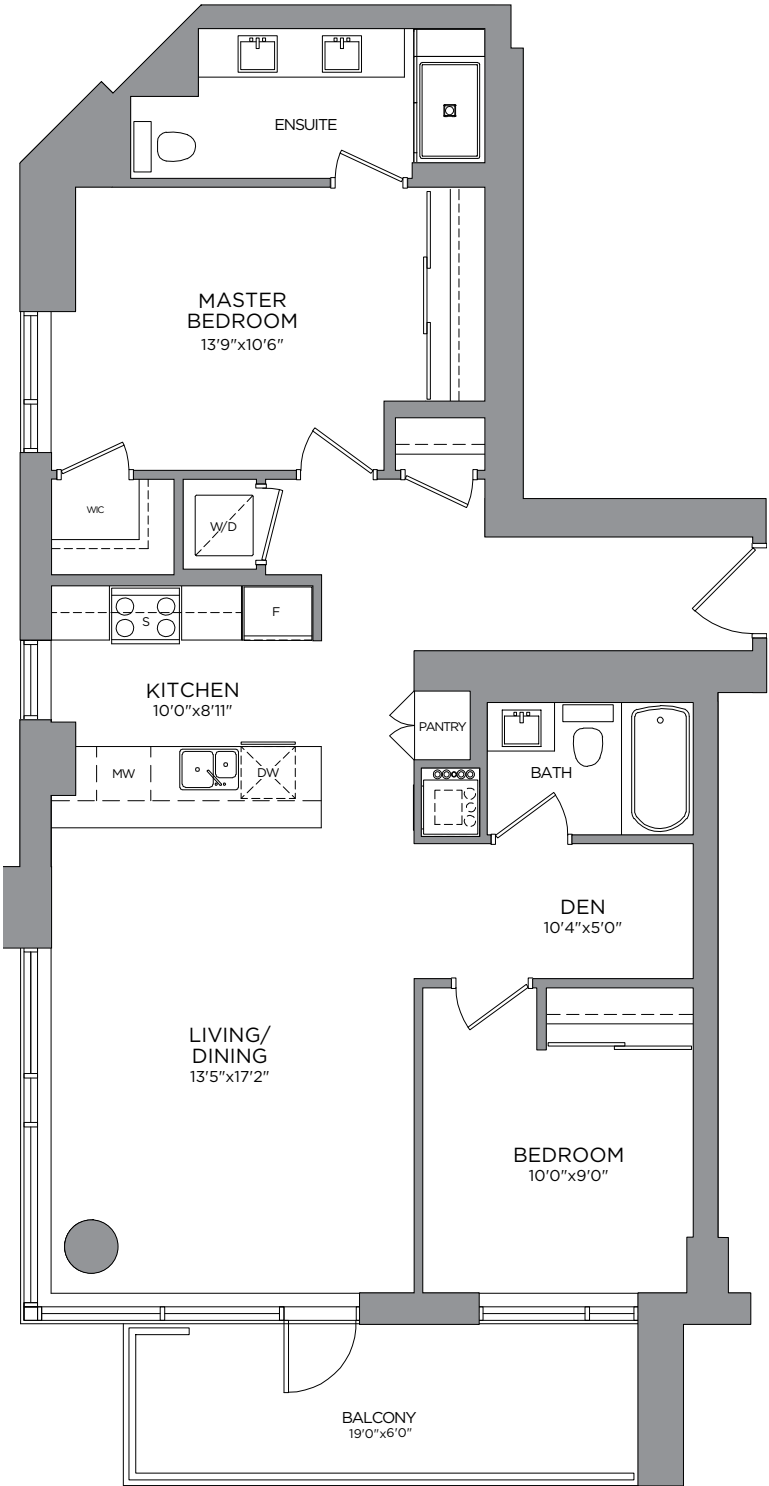
Re-imagine Condominium Living



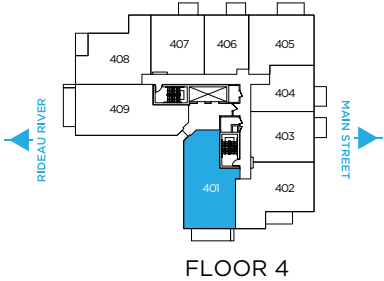
# Designer Finished Homes

## SUITE 401

MODEL 14 | 1,093 SQ. FT. | 2 BEDS + DEN | 2 BATHS



THE  
**SPENCER**  
AT GREYSTONE



Prices, dimensions and specifications are subject to change without notice. All renderings are artist's concept. E. & O.E. April 2024.



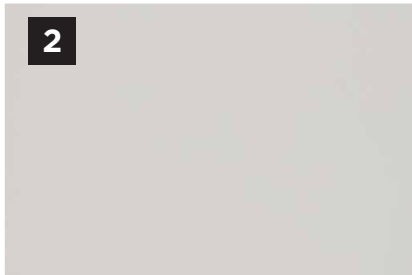
# FEATURES & FINISHES

## C2: MODERN DRAMA

### WHOLE HOUSE

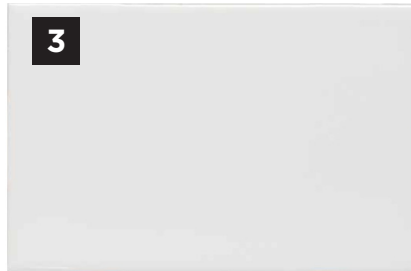


1



2

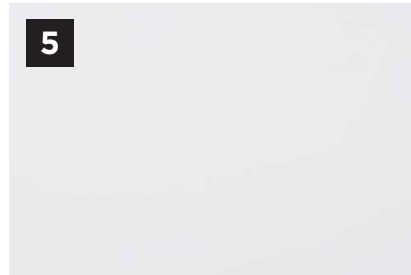
### KITCHEN



3



4



5

### BATHROOM



6



7



8



9

E.&O.E.

1

**FLOORING**  
White Oak  
Natural  
Engineered  
Hardwood

2

**PAINT**  
Repose  
Grey

3

**BACKSPLASH**  
Arctic  
White

4

**COUNTERTOP**  
Eternal  
Marquina  
Quartz

5

**CABINET**  
High Gloss  
White

6

**CABINET**  
Latitude  
North

7

**COUNTERTOP**  
Marengo  
Quartz

8

**WALL TILE**  
White Gloss

9

**FLOOR TILE**  
Nexus Mica

Colour and specifications are subject to change without notice. E. & O.E.

# APPLIANCES

ENJOY THE EASE AND LUXURY OF LIFE WITH THE HELP OF **MODERN APPLIANCES**



E.&O.E.

**1**

**FRIDGE**  
30" Blomberg  
Fridge

**2**

**MICROWAVE**  
Panasonic  
Built-In

**3**

**HOOD FAN**  
Faber  
Hood Fan

**4**

**DISHWASHER**  
24" Blomberg  
Tall Tub  
Panel Ready  
Dishwasher

**5**

**OVEN**  
30" Blomberg  
Slide-In  
Electric  
Range

**6**

**WASHER**  
24" Samsung  
Washing  
Machine

**7**

**DRYER**  
24" Samsung  
Dryer

THE  
**SPENCER**  
AT GREYSTONE

Contact your **Spencer Sales and Leasing Consultant**  
to book an appointment.



**LINDSAY CALLIHOO**

Sales and Leasing Consultant

TEL: 613-569-3043

EMAIL: [thespencer@greystonevillage.ca](mailto:thespencer@greystonevillage.ca)

**THE SPENCER SALES OFFICE:**  
223 Hazel St, Ottawa, ON K1S 1C4

All drawings are artist's concept and may vary slightly from the final product. Actual usable floorspace may vary from stated area, and square footage has been calculated based on usable living space according to the TARION rules and does not include garage or unfurnished basement areas. Drawings may show optional features which may not be included in the base price. Bulkheads & box outs may be required as chases for plumbing & mechanical. Garage main door location, if applicable, may vary subject to grade. In an ongoing review of homeowner's needs, changes may have been incorporated into our "New Home Features" and construction techniques. Specifications subject to change without notice. Manufacturers' images are shown and may differ from the final product. E. & O.E. Nov. 2024.

