



THE RUBY

4 BEDROOM ~ 2,228 SQ. FT.
WITH 308 SQ. FT. FINISHED BASEMENT

2-STOREY
TOWNS



ELEVATION A

ARTIST'S CONCEPT

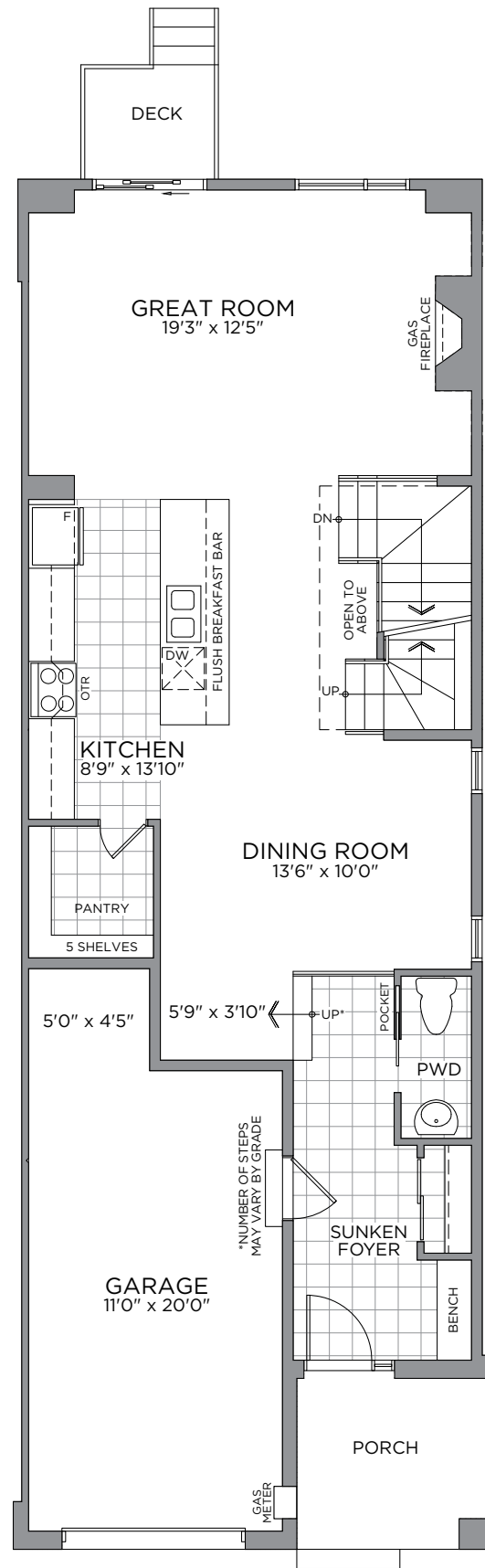
**2-STOREY
TOWNS**

THE RUBY ~ 2,228 SQ. FT.

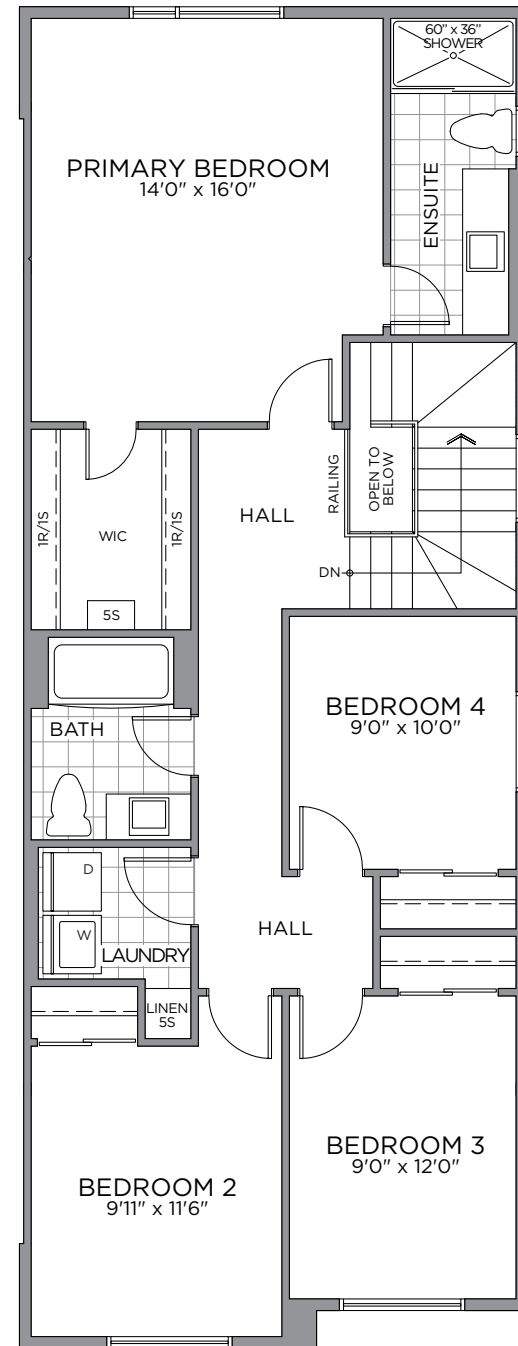
WITH 308 SQ. FT. FINISHED BASEMENT



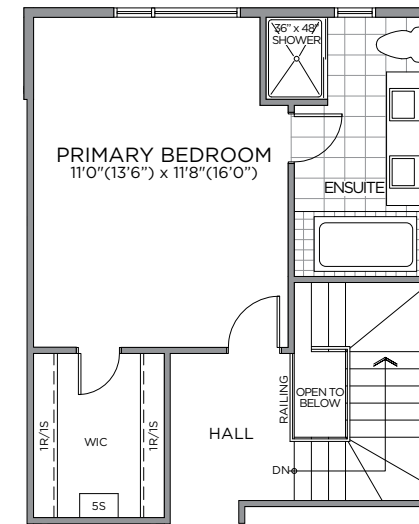
ELEVATION A



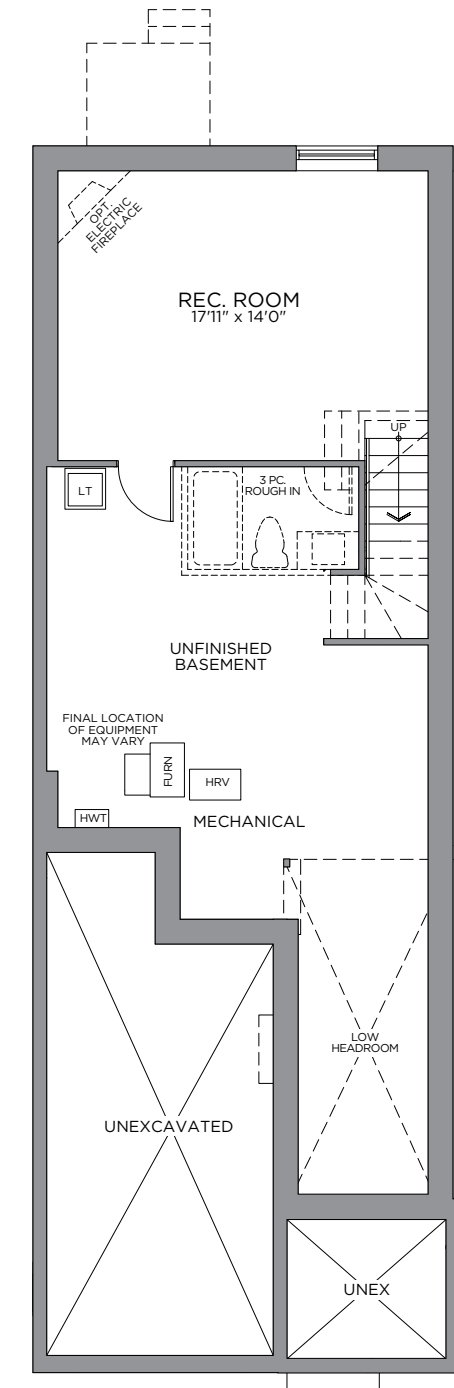
GROUND FLOOR



SECOND FLOOR



OPTIONAL SECOND FLOOR
PRIMARY ENSUITE



FINISHED BASEMENT

*Front window and porch sizing/locations vary based on elevations, see agent for detailed drawings. ** Sump pump is for eQuinelle only. Prices, dimensions and specifications are subject to change without notice. All renderings are artist's concept. E. & O.E. December 2022

