

Designer Finished Homes

THE CLEMENTINE

CT4-31 | 1,147 SQ. FT. | 2 BEDS | 2.5 BATHS



Artist's concept. E.&O.E.

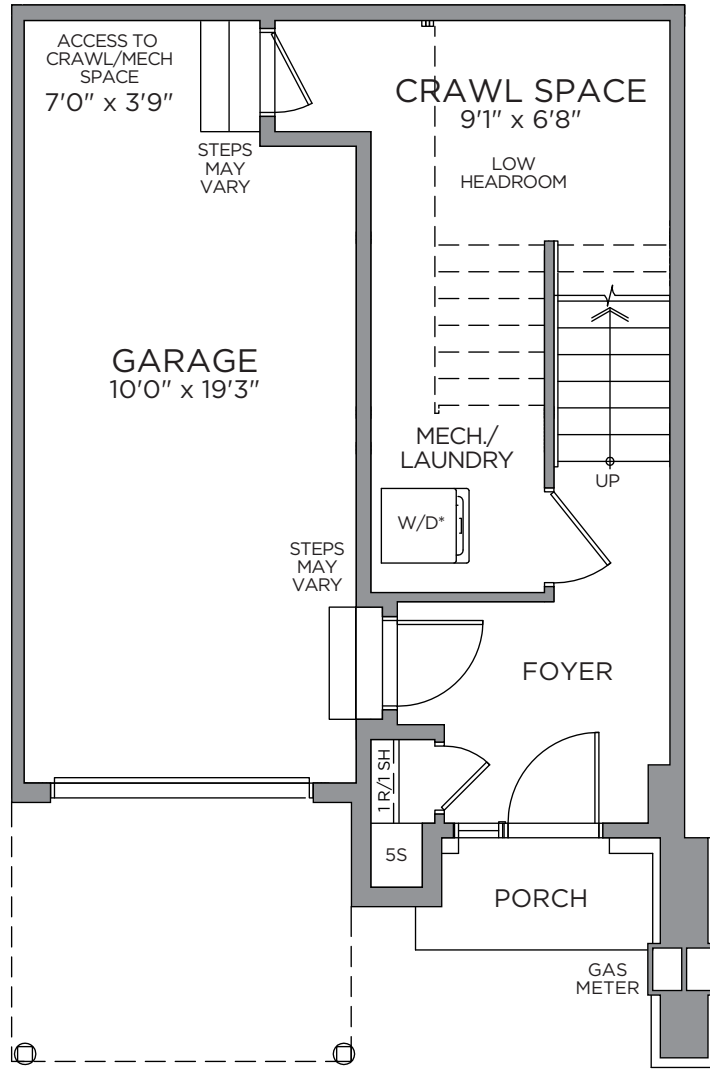


Artist's concept. E.&O.E.

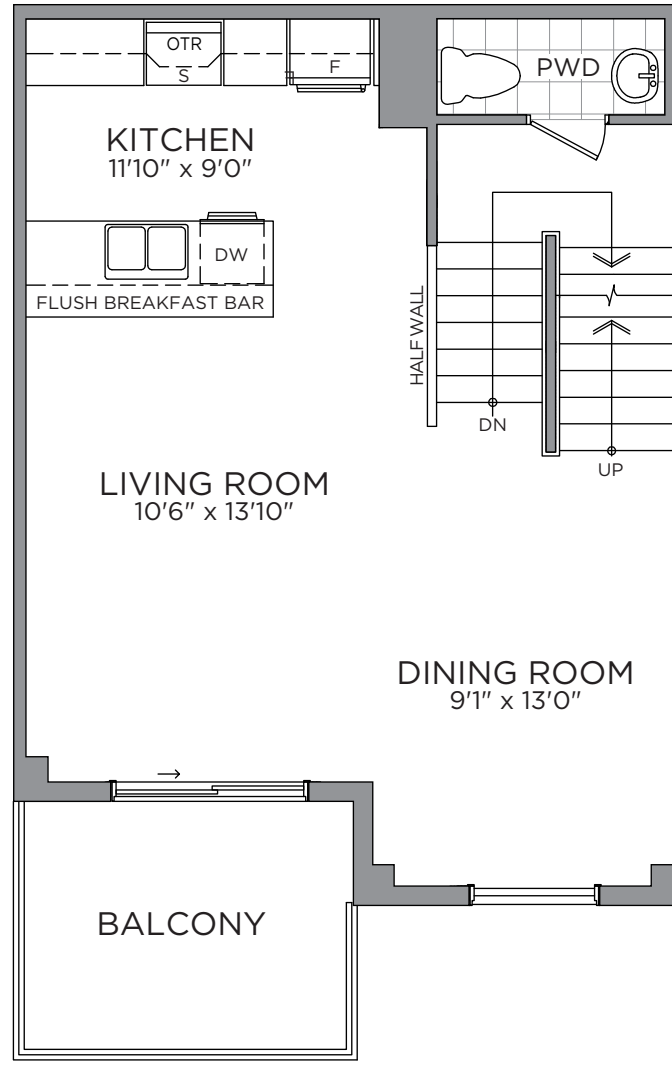
Designer Finished Homes

THE CLEMENTINE

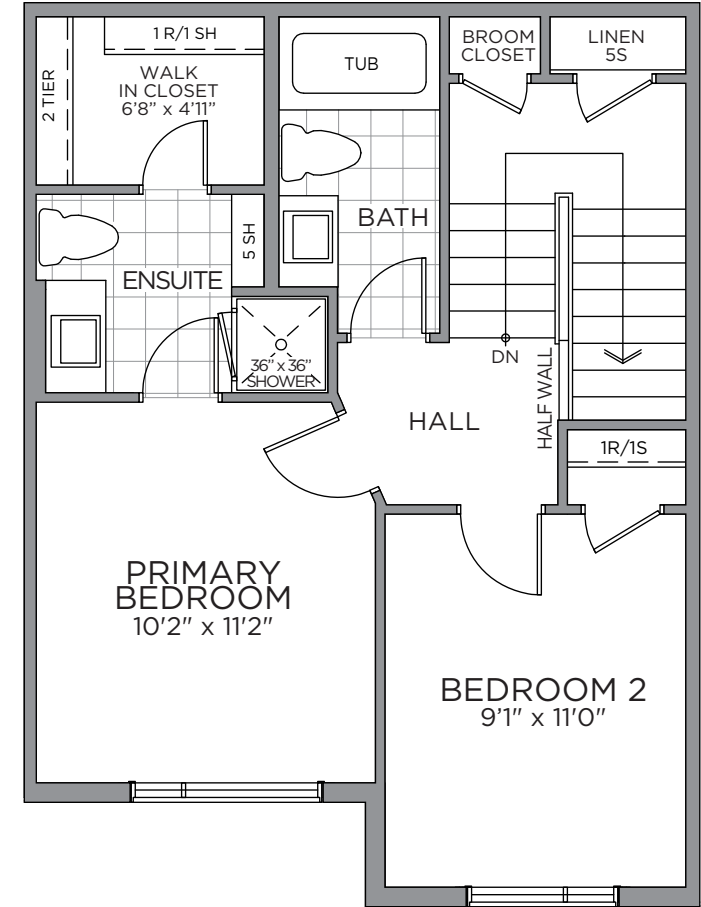
CT4-31 | 1,147 SQ. FT. | 2 BEDS | 2.5 BATHS



GROUND FLOOR



SECOND FLOOR

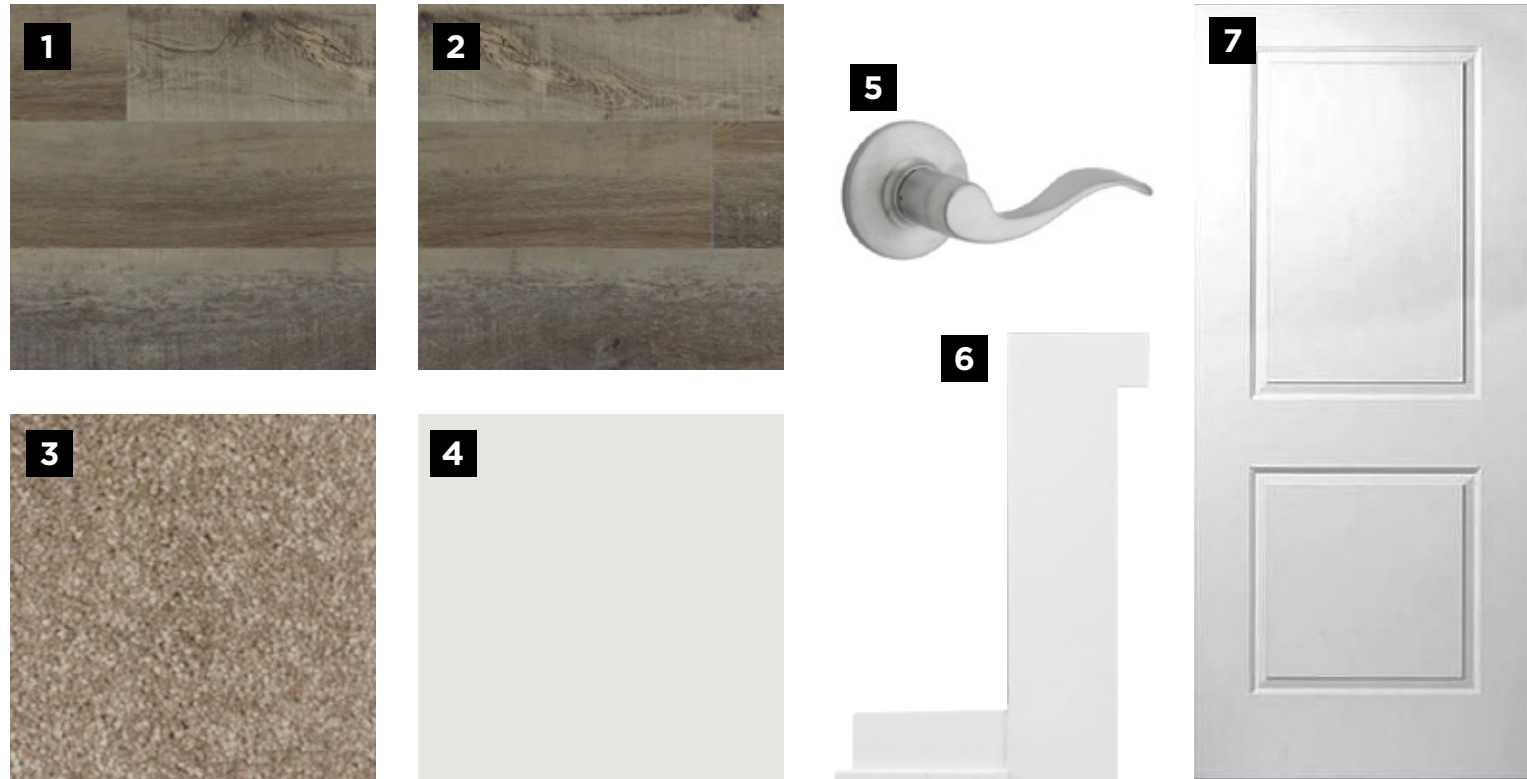


THIRD FLOOR

*Washer and Dryer location for optional third floor plan only. Prices, dimensions and specifications are subject to change without notice. All renderings are artist's concept. E. & O.E. February 2024.

INTERIOR DETAILS

MAKE A GRAND ENTRANCE WITH AN EXQUISITE **DOOR HARDWARE, FLOOR & TRIM PACKAGE**



E.&O.E.

1

MAIN ENTRY
Laminate
Plank Flooring
- Dubal -
Tikehau

2

LAMINATE FLOORING
Laminate Plank
Flooring - Dubal
- Tikehau

3

CARPET
Beaulieu
Coronet
Minotaur -
Mystic Beige

4

INTERIOR PAINT
Benjamin
Moore OC-
22 - Calm

5

INTERIOR DOOR HARDWARE
Layton Satin
Chrome Levers

6

TRIM PACKAGE
MDF Flat
(3/8"x3-
7/8") / MDF
(7/16"x11/16")

7

INTERIOR DOORS
Cambridge
2 Panel
Smooth

PRIMARY ENSUITE/MAIN BATH

WELL APPOINTED WITH SPA-INSPIRED COMFORTS IN YOUR COZY PRIVATE RETREAT



1

CABINETRY
Como 3/4
Melamine -
Rovere Chiostro

2

COUNTERTOP
Laminate -
Urban Day

3

FLOORING
Centura
12x12 Giza
Menkaure

4

SHOWER/TUB WALL TILE
Ceratec 4x16 Essential
Subway Tile - Horizontally
Stacked - Bianco

5

**CABINETRY
PULL**
Brushed
Nickel

6

**VANITY
FAUCET**
Moen Chateau
- Chrome

7

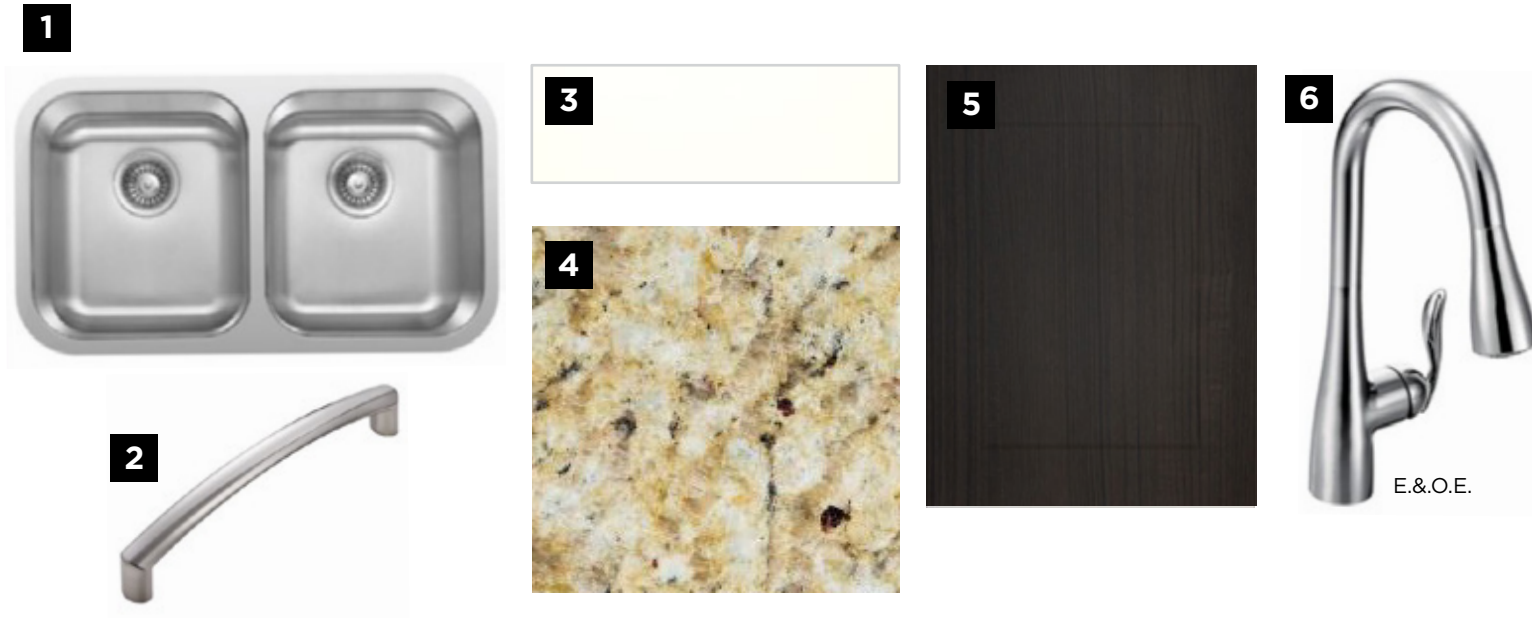
**TUB/SHOWER
FIXTURE**
Moen Chateau
- Chrome

8

VANITY SINK
Contrac
Reaves Drop-
In - White

KITCHEN

A GREAT RECIPE STARTS WITH A **GOURMET CHEF KITCHEN**



1

KITCHEN SINK
Nautika Double
Bowl Undermount
- Stainless Steel

2

**CABINETSRY
PULL**
Brushed
Nickel

3

BACKSPLASH
Olympia Colour and
Dimensions 3x6 Bright -
50/50 Offset - Warm White

4

COUNTERTOP
Granite -
Venetian Gold

5

CABINETSRY
Mission
Thermofoil -
Tuxedo

6

**KITCHEN
FAUCET**
Moen Arbor
Chrome

APPLIANCES

ENJOY THE EASE AND LUXURY OF LIFE WITH THE HELP OF **MODERN APPLIANCES**



1
WASHER
Whirlpool - 5.0
C/F Front Load
Washer - White

2
DRYER
Whirlpool -
7.4 C/F Front
Load Electric

3
HOOD FAN
GE Over-
the-Range
Microwave

4
RANGE
LG - 30"
Electric Smooth
Top Range

5
DISHWASHER
LG - 24"
Built In Front
Control

6
REFRIGERATOR
LG - 36"
Counter Depth
French Door

E.&O.E.

To call **Findlay Creek** home, contact your **Pathways Sales Consultant** to book an appointment.



JENNIFER DEAN
New Home Sales Consultant
TEL: 613.822.7247
EMAIL: jdean@eqhomes.ca



CLAUDIA WARNER-JACOBS
New Home Sales Consultant
TEL: 613.822.7247
EMAIL: CWarnerJacobs@eqhomes.ca

PATHWAYS SALES OFFICE:

122 Dun Skipper Drive, Ottawa, ON, K1X 0G2

All drawings are artist's concept and may vary slightly from the final product. Actual usable floorspace may vary from stated area, and square footage has been calculated based on usable living space according to the TARION rules and does not include garage or unfurnished basement areas. Drawings may show optional features which may not be included in the base price. Bulkheads & box outs may be required as chases for plumbing & mechanical. Garage main door location, if applicable, may vary subject to grade. In an ongoing review of homeowner's needs, changes may have been incorporated into our "New Home Features" and construction techniques. Specifications subject to change without notice. Manufacturers' images are shown and may differ from the final product. E. & O.E. February 2024.

