



THE AVA INTERIOR/END
3/4 BEDROOM ~ 1,633 SQ. FT. / 1,644 SQ. FT.

**MODERN
TOWNS**



ELEVATION M

ARTIST'S CONCEPT

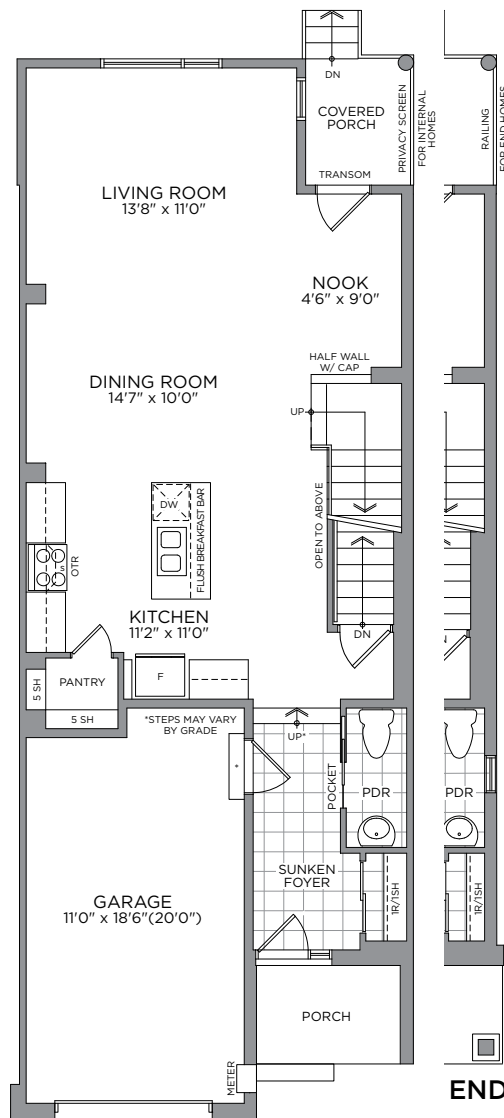
**MODERN
TOWNS**

THE AVA(INTERIOR) ~ 1,633 SQ. FT. / THE AVA(END) ~ 1,644 SQ. FT.

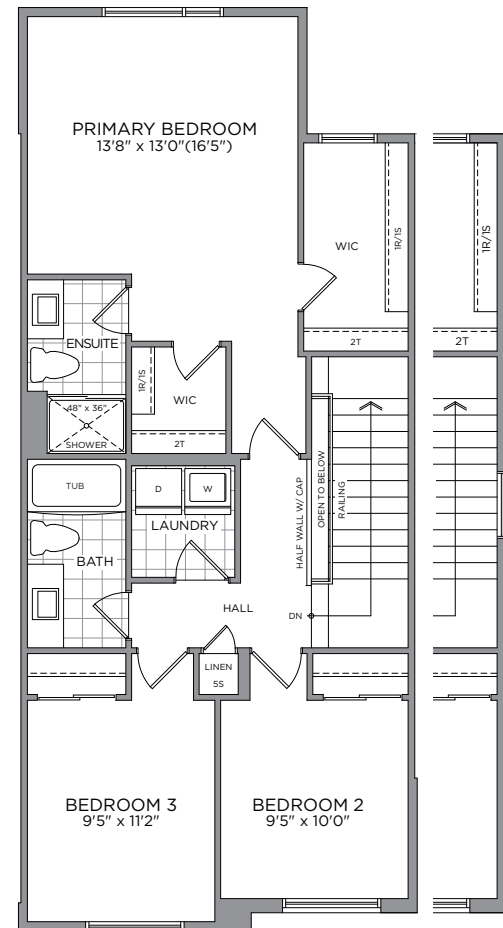
1,949 SQ. FT. (INTERIOR with Optional Finished Basement Recreation Room) / 1,960 SQ. FT. (END with Optional Finished Basement Recreation Room)
1,962 SQ. FT. (INTERIOR with Optional Finished Basement Recreation Room 2) / 1,973 SQ. FT. (END with Optional Finished Basement Bedroom & Recreation Room 2)



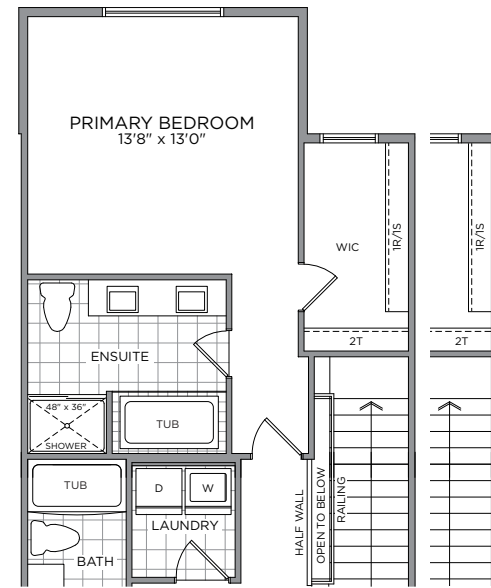
ELEVATION M



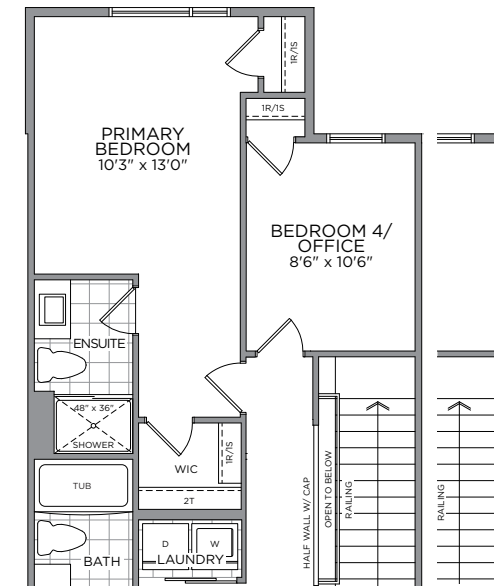
GROUND FLOOR



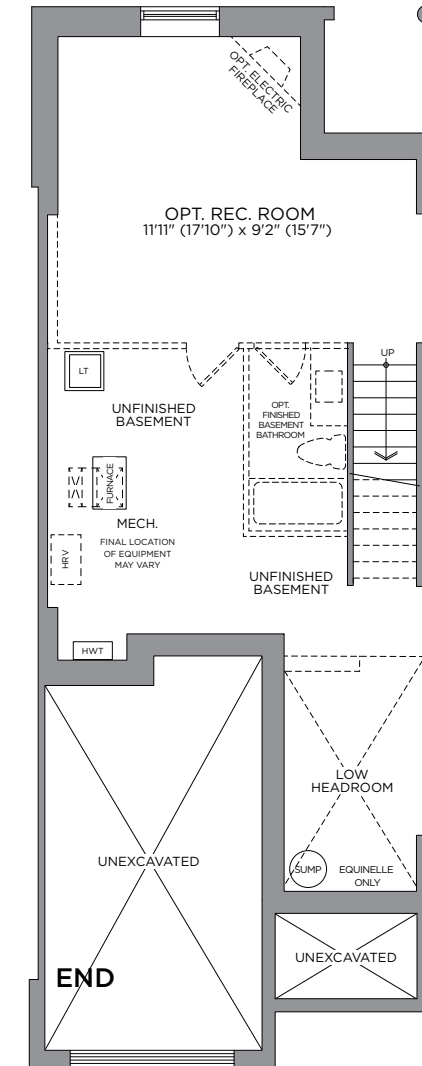
SECOND FLOOR



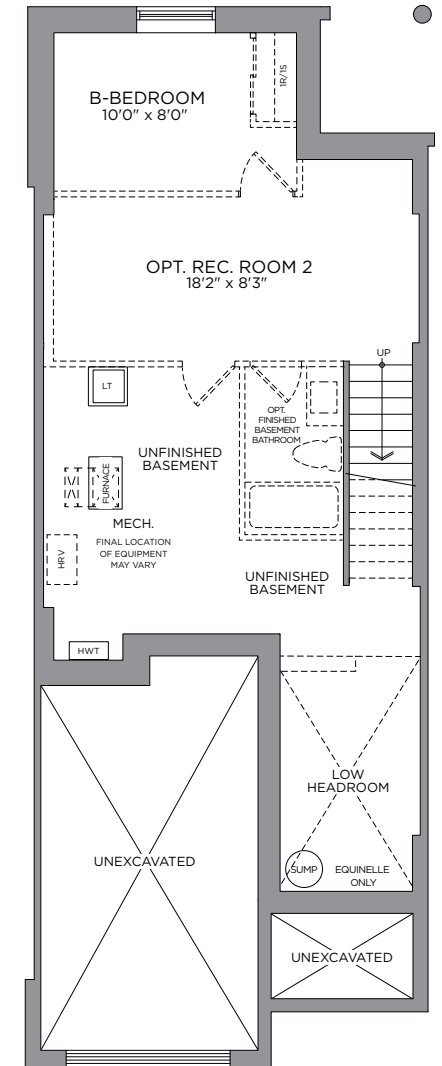
SECOND FLOOR PLAN #1
OPT. PRIMARY ENSUITE



SECOND FLOOR PLAN #2
OPT. BEDROOM 4/DEN



STANDARD BASEMENT
OPT. FINISHED BASEMENT
REC. ROOM
316 SQ. FT. (INT)
317 SQ. FT. (END)



STANDARD BASEMENT
OPT. FINISHED BASEMENT
BEDROOM & REC. ROOM 2
329 SQ. FT. (INT)
330 SQ. FT. (END)

*Front window and porch sizing/locations vary based on elevations, see agent for detailed drawings. ** Sump pump is for eQuinelle only. Prices, dimensions and specifications are subject to change without notice. All renderings are artist's concept. E. & O.E. June 2023

